

Power trains refined

Chevrolet shifts into overdrive

If 1982 was the year of the overhaul at Chevrolet, 1983 is the year of the overdrive.

On the heels of 1982's product blitz (three completely new car and truck lines introduced along with the third-generation Camaro), 1983 sees power-train refinements designed to enhance both performance and fuel economy.

Camaro, for example, becomes one of two rear-wheel-drive Chevrolets available in 1983 with a five-speed manual transmission. (The other is Chevette.) Also added to Camaro's power-train lineup is a new four-speed overdrive automatic designed to enhance both acceleration and highway fuel economy.

Cavalier — introduced Interim 1981 as an '82 model — becomes Chevrolet's first front-wheel-drive model with a five-speed manual transmission. Also new to Cavalier is a larger, higher-torque 2.0-liter fuel-injected engine, plus new axle ratios designed to enhance its performance, certain chassis and steering modifications designed to improve its road manners, and a new standard equipment list.

Celebrity — the other new front-drive Chevrolet last year — gets V6 diesel power for the first time. (A new four-speed overdrive automatic

transmission — first such unit from Chevrolet in a front-drive car — will be available midyear.)

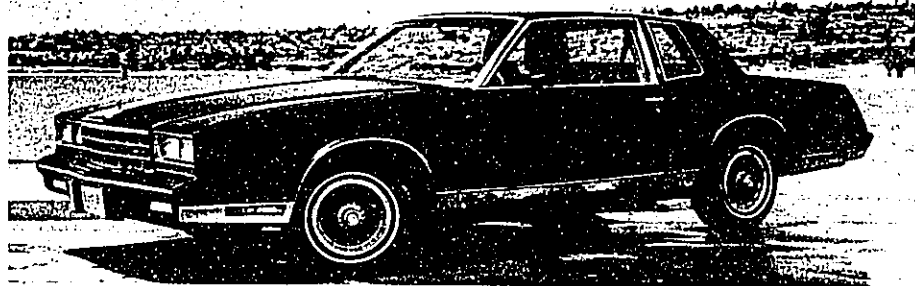
Other significant passenger-car developments at Chevrolet include:

- The return, after a three-year absence, of a 5.0-liter V8 to Malibu and Monte Carlo federal engine lineups.

- The availability in all Citation models of the high-output (135 horsepower), 2.8-liter V6 engine which previously was limited to X-11 models.

CAPRICE-IMPALA. Chevrolet's full-size friend of the family, remains

Please turn to Page 15



Chevrolet's Monte Carlo retains its exterior lines and adds a luxury GL interior and a 5.0-liter V8 engine to its option list in 1983. Diesel power also is available.

ANOTHER 1ST FROM... ACTION OLDSMOBILE

MICHIGAN'S FASTEST GROWING OLDS DEALER

FINANCING NOW AVAILABLE ON 11.9% OVER 200 CARS

OVER 50 CUTLASSES Stk. No. 1489	As Low As \$9631
OVER 50 CIERAS Front Wheel Drive Stk. No. 1317	As Low As \$9642
OVER 15 FIRENZAS Stk. No. 1502	As Low As \$7228
OVER 15 OMEGAS Stk. No. 1404	As Low As \$8654
OVER 30 88's Stk. No. 1301	As Low As \$10,477
OVER 20 '88's Stk. No. 1491	Discounts up to \$1800
OVER 15 TORONADOS Stk. No. 1058	Discounts up to \$2000

Prices Subject to Prior Sale

GM EMPLOYEES... STOP HERE 1st!
No Shopping Necessary
Hundreds Of Cars To Choose From
Hundreds of \$\$\$ To Be Saved!

GM QUALITY SERVICE PARTS

"Keep That Great GM Feeling With Genuine GM Parts"

ACTION Oldsmobile

MICHIGAN'S FASTEST GROWING OLDS DEALER

33850 PLYMOUTH RD., LIVONIA 261-6900

Camaro Citation Caprice Classic Malibu Celebrity

"SHOWPLACE FOR CHEVROLET"

MATICK CHEVROLET

World's Largest Indoor Showroom!
Shop and Browse Thru Our Large Inventory in 700 Comfort Cars & Trucks Displayed Inside

OVER 150

C10 Silverado Fleetside Pickup Camaro Sport Coupe

11.9% G.M.A.C. Financing!
1984 CORVETTE-NOW TAKING ORDERS

1ST TAKING CHARGE Chevrolet

14001 Telegraph Rd. At the Jeffries X-way Redford **531-7100**

Chevrolet Monte Carlo Camaro Beretta Malibu Cavalier