



A field of tulips which trail off to infinity in many a garden's dream of heaven. In this one the artist works her special magic with perspective and design.



Marjorie Hecht Simon talks about how she has not only increased the size of her watercolors, as evidenced by the one behind her, but her scope of interest as well. She is including more people in her colorful works and more perspective and depth of field.

Staff photos by Mindy Saunders

Her paintings reflect a love of people, gardens and travel

By Corinne Abelt
staff writer

If there's any doubt that Marjorie Hecht Simon's in love with life, all you need to prove the point is to see her now one-woman show at Rubiner Gallery of Royal Oak. She's been with the gallery for a long time and is a familiar figure in the metropolitan area art world. She recently completed a 4-by-10-foot watercolor for the Hutzel Hospital lobby, not an easy task as any watercolorist will attest.

It is a garden scene as are many in this new show, but now there are more figures in the paintings — a group of three children watch the fish in a pond, a group of three middle-aged women enjoy a moment in the park, a couple stroll in a garden alive with color, and children ride the old fashioned carousel just outside the Smithsonian Museum in Washington, D.C.

Hecht Simon's love of pattern is still here, but she takes us outdoors more often than her previous shows, gives us broader vistas and more perspective.

THE ARTIST has always been a traveler, but now having remarried about a year ago, she has an enthusiastic companion to share the delights of foreign ports.

While she often paints on location, she's just as apt to take as many photographs as she can, bring them home, see which ones worked and then start interpreting with watercolor.

One which took three years to "jell" is one of the strongest in the show — a group of six American girls in Toledo, Spain. They are relaxing on the steps of an old building with great pillars.

"I think they were from a Catholic University studying there," Hecht Simon said remembering her conversation with them on one of her lone trips to Europe.

It's not strange to Hecht Simon to have so many figures in her paintings, she's been doing portraits by commission for years, but seldom if ever shows them because they are picked up immediately.

The artist was a successful illustrator and commercial artist before marrying and raising a family. When her children were

grown she went back to painting and has found it not only rewarding, but a ideal life style.

"The only way I've been able to operate is to have an emotional reaction," she said. "Colors are number one to me, patterns and relationships . . . You have to have courage to make statements. It's really the artist's judgement that chooses to bring things forward . . . It's a combination of letting it happen and keeping control."

AND SHE has mastered this freedom/control technique so well that it is one of the reasons why her works come alive with freshness of spirit and line.

Her paintings, she said, may start with a slide, "but they soon take on a life of their own. I always have a general concept of a goal, but as you go you accept or reject directions."

The exhibit continues through June 9. Hours are 10 a.m. to 5:30 p.m. Tuesday-Friday, until 5 p.m. Saturday, 621 S. Washington, Royal Oak.



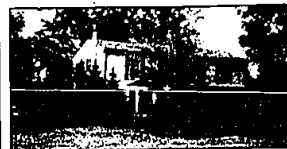
"Children by a Fish Pond" was inspired by a scene on a recent trip to the Orient. Marjorie Hecht-Simon sometimes paints

on location and once slid right into the water when her work took her a little too close to the edge.

sorrentino & associates, inc. • REALTORS

860 west long lake road / bloomfield hills, michigan 48013

646-1400



GREEN LAKE FRONTAGE! Beautiful property to go with this exceptionally nice Colonial. Four bedrooms, 2 1/2 baths, family room, and recreation room. ENJOY LAKE LIVING! \$159,900



SPACIOUS BEVERLY HILLS HOME! Area of expensive homes, convenient to Country Day and St. Regis. Four bedrooms, three full baths, family room, and den. \$122,900



ALMOST LIKE NEW! This condominium is spotless and ideal for someone wanting the convenience of living in Southfield only minutes from shopping and expressways. \$79,900



CHAMPAGNE TASTE? This home can serve your entertaining needs either sitting by the pool on hot summer days or by the warm fireplace in winter. \$93,500



GORGEIOUS LANDSCAPING

BEAUTIFUL bay windows in living room and family room are features of this four bedroom, 2 1/2 bath Colonial. Stained woodwork, first floor laundry. Deck plus brick patio. \$94,900. 525-0990.



SPACIOUS

YOU'LL LOVE THIS beautiful estate lot with view to open land and woods. Four bedrooms and den, Colonial with first floor laundry, covered patio plus energy saving features and custom decor. \$109,900. 455-0990.



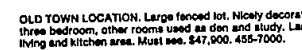
CANTON

SUPER SHARP! Four bedroom, 2 1/2 bath cent built, Colonial in forest trails. Beautiful decor and earthtone carpet. First floor laundry, central air. Many extras. Must be seen! \$79,900. 455-7000.



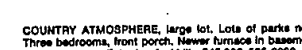
PLYMOUTH

SPACIOUS RANCH with 3 bedrooms in good location. This home features natural woodwork, hardwood floors. Large living room with fireplace. Knotty pine family room and private yard. \$72,900. 455-7000.



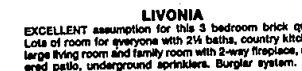
OLD TOWN LOCATION

Large fenced lot. Nicely decorated three bedroom, other rooms used as den and office. Large living and kitchen area. Must see. \$47,900. 455-7000.



COUNTRY ATMOSPHERE

Large lot. Lots of parks near. Three bedrooms, front porch. Newer furnace in basement. Two car garage. Extra low fuel bills. \$45,900. 525-0990.



LIVONIA

EXCELLENT assumption for this 3 bedroom brick quad! Lots of room for everyone with 2 1/2 baths, country kitchen, large living room and family room with 2-way fireplace, covered patio, underground sprinklers. Burglar system. Two car garage. \$77,900. 525-0990.



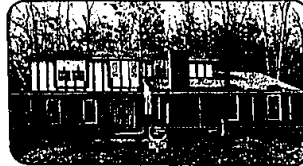
COLONY PARK

LOCATED ON THE COMMONS with five bedrooms, 2 fireplaces, three car garage, central air, sprinklers, very large deck and much, much more. Perfect for the large family and entertaining. A must see! \$129,900. 477-1111.



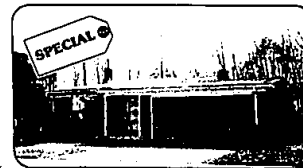
PRIVACY

SURROUNDS THIS 3 bedroom, 2 bath ranch on large country lot on dead end street. Many extras included! FHA, VA terms available. \$84,900. 477-1111.



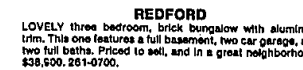
HOME SERVICE WARRANTY INCLUDED

CUSTOM built 4 bedroom Colonial on large cul-de-sac lot. Lots of trees and backing to wooded area. Library, two fireplaces, wet bar and more! Assumable mortgage. \$149,900. 477-1111.



WESTLAND

EXTRA! EXTRA! I've got them! 20x14 family room. Fireplace and 1/2 bath in master bedroom. Huge kitchen with appliances. Two car attached garage. Nice sized lot. New roof and extra insulation. Beautiful in-level. \$59,900 reduced to \$56,900. Blue Tag Special 325-2000.



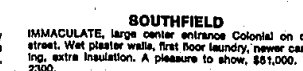
REDFORD

LOVELY three bedroom, brick bungalow with aluminum trim. This one features a full basement, two car garage, and two full baths. Priced to sell, and in a great neighborhood. \$38,500. 251-0700.



GARDEN CITY

SHARP three bedroom brick ranch located on a large corner lot. Nice large rooms and very well maintained. This original owner home was custom-built and is in very good condition. Don't let this one go by! \$48,900. 251-0700.



LATHRUP VILLAGE

PERFECT HOUSE for entertaining. Very large rooms, good traffic pattern. Home in perfect condition. Beautiful corner lot. Garage on side of house. Everything is first class. \$76,500. 559-2300.



SOUTHFIELD

IMMACULATE, large center entrance Colonial on quiet street. Wet plaster walls, first floor laundry, newer carpeting, extra insulation. A pleasure to show. \$51,000. 559-2300.

LOVELY three bedroom brick ranch, 1 1/2 baths, 2 car garage, fireplace, newer furnace, water heater, roof and carpeting. Assumable mortgage. \$55,000. 559-2300.



REALTORS

Farmington Hills
851-1900

Lathrup Village
559-2300

Plymouth
455-7000

Northville
348-8430

BLUE TAG SPECIAL

Any home designated as a REAL ESTATE ONE BLUE TAG SPECIAL by advertisement or by the lawn sign with a blue tag rider has been discounted by the home seller by 5% or greater from the asking price for the month of May. Real Estate One will be distributing Discount Certificates to every person visiting our 3200 Open Houses or our 22 Sales Offices. The bearer of these Discount Certificates is entitled to purchase any home bearing the Real Estate One Blue Tag Special according to the discount price of said home. Look for that blue tag — it means a special opportunity for you!



NORTHVILLE

SUPER location. Tread lot with 4 bedroom, 2 1/2 bath home. Brick ranch, with walk-out to inground pool. Not a drive by. Just reduced to \$144,900. 345-8430.

FARMINGTON HILLS

CHARMING four bedroom Colonial, large family room with fireplace plus rec room. Attached two car garage, young modern and clean. Newer flooring throughout. Farmington Hills schools. \$72,900 reduced to \$62,950. Blue Tag Special 851-1900.

NOVI

LOVELY three bedroom Colonial on large corner lot with side entrance garage. Warm, neutral decor, 2 1/2 baths, large cement patio, nice landscaping. Great low interest assumption. \$55,500. 477-1111

LIVONIA

THREE bedroom ranch features fenced yard, 2 car garage with electric door opener, large country kitchen, new double storm windows. Home in mint condition and in excellent area. \$64,900. 477-1111.

WESTLAND

Beautifully decorated three bedroom, brick ranch on nicely landscaped lot. Large cheery kitchen, two car garage has storage lot and work area. A pleasure to show! \$47,900. 251-0700.

NEAT AND CLEAN. Tastefully decorated four bedroom ranch, tread corner lot. Well-lit schools. \$57,000 reduced to \$54,150. Blue Tag Special 325-2000.

Michigan's Largest Real Estate Company