

### exhibitions

#### • PEWABIC POTTERY

Saturday, Aug. 20 — Exhibition of ceramic sculpture in the new Pewabic Sculpture Garden, organized and installed by Tom Phardel, continues through the summer. It offers an opportunity to look at clay art in a new light and features works by several ceramic sculptors.

Indoors there's a variety of work by gallery artists including Dulin, Bolt and Sue Stephenson. Summer hours are 10 a.m. to 5 p.m. Monday-Saturday, 10125 E. Jefferson, Detroit.

#### • GALERIE DE BOUCOURT

Tuesday, Aug. 23 — Contemporary Naïves by Muriel Clayton will continue through Sept. 10. Clayton, formerly of this area, now lives in Tucson, Ariz., and her new acrylics show a strong southwestern influence. Clayton has had one-person shows in Southampton, Palm Beach, Nantucket, Greenwich, Toronto and Montreal and her work has been shown at the Fabian and Jay Johnson America's Folk Heritage Gallery in New York City. Reception to meet this popular artist 5-8:30 p.m. Tuesday, Aug. 23 and 5-8:30 p.m. Tuesday, Sept. 6. The gallery, 250 Martin, is open 11 a.m. to 5 p.m. Tuesday-Saturday.

#### • GODDEKE'S GARDEN GALLERY

Group show of gallery regulars including Cartmell, Kachadorian and Will along with guest exhibitor, Richard Jerry. Also featured is a collection of Inuit carvings from the Canadian Northwest territory. Continues through Sept. 17. Hours are 10:30 a.m. to 4 p.m. Tuesday-Saturday, 48 New Street, Mount Clemens.

#### • FABERHOFF

Works by naturalist woodcarver Jack L. Clifford will be on display through December. He works mainly with hardwoods and does both relief and free-standing sculpture. Hours are 10 a.m. to 5 p.m. Wednesday-Saturday, 118 E. Fourth St., Royal Oak.

#### • CANTOR/LEMBERG GALLERY

Exhibit of works from Multiple, New York publisher of prints and multiples, includes works by Artchewsky, Basell, Frankenthaler, LeWitt, Oldenburg, Paladino, Rotherberg, VanDyk and Wasserman. There are examples of various printmaking media with strong emphasis on the woodcut. Gallery hours are 11 a.m. to 5:30 p.m. Tuesday-Saturday, 538 N. Woodward, Birmingham.

#### • SIXTH STREET GALLERY

Selected works by gallery artists, paintings, prints and jewelry by Richard Robinson are on display through Sept. 24. Summer hours are 10 a.m. to 5 p.m. Wednesday-Saturday, 214 W. Sixth, Royal Oak.

#### • MAIN STREET PLACE GALLERY

New gallery in Royal Oak features the work of a variety of local artists along with a special show of art by Waldorf Institute faculty and students. Exhibit continues through September. Hours are 10 a.m. to 5 p.m. Tuesday-Sunday, 903 North Main, Royal Oak.

#### • WDIV GALLERY

Black folk art on loan from Hill Gallery of Birmingham is on display through Aug. 26. It runs concurrently with the larger exhibition of Black Folk Art in America at Detroit Institute of Arts. Visiting hours at Channel 4's new building, 100 W. Lafayette, Detroit are 9 a.m. to 5 p.m. Monday-Friday.

#### • HALSTED GALLERY

"Michigan Photographers" is the name of the show which includes works by Amy Kahn, Martha Marderosian, Joe Rulong, Bill Rauhauer, Larry Snider, Fae Heath Batten and Richard Shirk. Show continues through Sept. 17. Hours are 10 a.m. to 5:30 p.m. Tuesday-Saturday, 560 N. Woodward, Birmingham.

#### • SOMERSET MALL

Linda Solomon Focuses on the Famous — Chapter Two" is an all new show of celebrity photographs by the local woman, who has become as famous as those she catches with her trusty camera. Continues through Aug. 20. Open to the public at no charge during regular mall hours, Big Beaver at Coolidge, Troy.

#### • MULLALLY MATISSE GALLERIES

Paintings by gallery artists of boats, lakes and meadows along with new work by Clifford B. West and new art gains by nationally known artists continue through the month. Summer hours are 11 a.m. to 4 p.m. Tuesday-Saturday, 10235 Haynes, Birmingham.

#### • ALLEY ARTS & ANTIQUES

"All paintings by Sharon Scocchin will be on display through August. Hours are 10 a.m. to 5:30 p.m. Monday-Saturday, 32800 Franklin at corner of 14 Mile, Franklin Village.

#### • CADE GALLERY

New paintings by Ann Arbor artist, Kristin Hermannson under the theme "Hotels" continue through Aug. 20. Hours are noon to 7 p.m. Wednesday-Sunday, 8025 Agnes, Detroit.

#### • DETROIT INSTITUTE OF ARTS

"Black Folk Art in America: 1830-1890" continues through Oct. 2. There

are more than 200 paintings, sculptures and drawings by this group of little-known 20th century artists. Free public hours daily at 1 p.m. Museum hours are 9:30 a.m. to 5:30 p.m. Tuesday-Sunday. Free admission, 5200 Woodward, Detroit.

#### • OAKLAND COUNTY GALLERY

An exhibit of photography, "Generals 1-3" by William E. Dwyer continues through the month. His work illustrates his interest in light — reflections, shadows and values. Presented by the Oakland County Cultural Council. The Gallery is on the second floor of the Executive Office Building, 1300 N. Telegraph, Pontiac. Open during regular business hours, Monday-Friday.

#### • COLLECTOR'S ART GALLERY

Original prints by Joan Brace are on display at the gallery. This artist who was born and educated in California has had a number of shows in Michigan where she now lives and works. Her works at the gallery are limited edition etchings, 441 Walnut, Rochester. For hours, call 653-9015.

#### • ROBERT L. KIDD GALLERY

A group exhibition featuring work by Lyman Kipp, Harry Bertola, Lowell Nesbitt, Lamar Briggs, Chuang Che and Gary Davidet, and a one-man exhibition of sculptural fiber wallhangings by Robert L. Kidd, will be on display at the Kidd Gallery, 107 Townsend, Birmingham, Friday through Saturday, Sept. 3. Hours are 11 a.m. to 5:30 p.m. Tuesday through Saturday.

#### • AAAAA

A series of drawings on paper by artist Mary King will be on display in the Exhibit Gallery of the Ann Arbor Art Association, 317 W. Liberty, starting Friday through Aug. 20. Gallery hours are noon to 5 p.m. Monday, 10 a.m. to 5 p.m. Tuesday through Saturday.

#### • HABATAT GALLERIES

Architectural sculptures in glass by David Hochhausen will be on display at the Habatat Galleries, 13335 Southfield Road, Lathrup Village, through Sept. 3. Summer hours are 10 a.m. to 6 p.m. Wednesday, Thursday and Saturday, 10 a.m. to 5 p.m. Friday.

#### • CAROL HOOBERMAN GALLERY

Selected works by gallery artists in ceramics, glass, wood, handmade paper, paintings and hand-crafted jewelry will be on display throughout August at the gallery, 155 S. Bates, Birmingham. Hours are 10:30 a.m. to 5 p.m. Tuesday through Friday, 10:30 a.m. to 5 p.m. Saturday by appointment.

#### • DONNA JACOBS GALLERY

"America Before Columbus" continues at the gallery, 574 N. Woodward, Birmingham, through Aug. 21. The exhibit features archaeological and historical works from South America, Central America and Mexico. Hours are 11 a.m. to 5:30 p.m. Tuesday through Saturday.

#### • XOXOPIPI GALLERY

A drawing exhibition featuring new work by Stephen Goodfellow, Maggie Clitric, Mary King, Elissa Glasgold, Patricia Soderberg and Robert Jacobson continues through Aug. 20 at the gallery, 565 N. Woodward, Birmingham.

#### • TROY GALLERY

"Landscapes Around the World" features works by Fanch, Susan Gold, Elvira, Lebadang, Romley and Shurr. Continues through Sept. 17. Hours are 11 a.m. to 5:30 p.m. Tuesday-Saturday. Closed Saturdays during August, 785 West Big Beaver, Top of Troy concourse, Troy.

#### • RUBINER GALLERY

A familiar gallery has a new address. The new location is 7001 Orchard Lake Road, Suite 450A, West Bloomfield. Works by regular gallery artists will be on display through August. Summer hours are 10 a.m. to 5:30 p.m. Tuesday-Saturday.

#### • PARK WEST GALLERIES

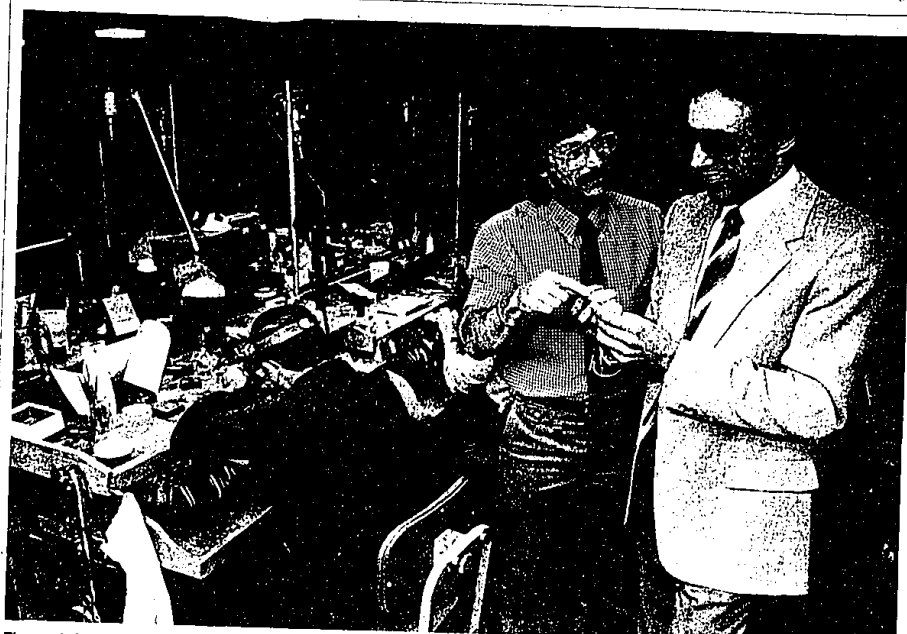
Works on paper by Frank Stella, bronze sculptures by Erte, landscapes by American printmakers Harold Altman, Arnold Alanis and Robert Altmann, paintings, sculptures and drawings by Israeli artist Yacov Agam, as well as works by Picasso, Miro, Chagall, Goya, Lanture and Renoir are on display at Park West Galleries, 29489 Northwestern Highway, Southfield, through Sept. 9. Hours are 10 a.m. to 6 p.m. Mondays-Wednesdays, 10 a.m. to 5 p.m. Thursdays and Fridays, 10 a.m. to 5 p.m. Saturdays-Sundays.

#### • GRINSTEIN JEWELRY AND DESIGN

Bolivian textiles of the late 19th and early 20th centuries will be on display along with a number of pre-Columbian pieces. On the lower level of the Great American Building, 280 N. Woodward, Birmingham. Hours are 11 a.m. to 6 p.m. Monday-Saturday.

#### • Items for the exhibitions listing

should arrive a week before the publication date. Please include brief information about the art event, time, place, opening and closing dates and hours. Send to Exhibitions, Observer & Eccentric Newspapers, Box 503, Birmingham 46012.



The workshop in David Wachler & Sons is easily seen from the show room of the new Birmingham store. Link Wachler, left, and his cousin, Buzz Wachler, take another look at one of the bracelets made using James Tassie's 200-year-old molds.

## Striking gold Family of jewelers updates history

By Corinne Abett  
staff writer

SOME OF the newest, most exciting pieces of jewelry created by David Wachler & Sons of Birmingham draw on a source that dates to the late 18th and early 19th century.

A tray of molds which the Wachlers (there are seven of them in the family business) acquired several years ago are now being used to cast 18 karat gold medallions for rings, bracelets and pendants.

These are original molds made by James Tassie for the renowned Josiah Wedgwood.

The off-white molds for cameos and intaglios of a glass paste, not subject to shrinkage like clay, were designed by Tassie, a celebrated Scottish mold maker who did commissions for Wedgwood from 1769-1791.

Wedgwood, considered the leader in good taste, used many established artists from several countries in addition to his own artists and craftsmen.

Buzz Wachler said, holding a gold link bracelet made from the molds in graduated sizes, "It was a while until we knew what to do with them. We knew we couldn't recreate them in the normal pattern. We didn't

even know what material they were made of when we purchased them."

His cousin, Link Wachler, added, "And we didn't want to ruin them."

But, since the Wachlers themselves are mold makers who do all kinds of commission pieces in 18 karat gold, they solved the problems of working with these wonderful, intricate Tassie molds without damaging them.

THEY use a lost wax process, with a few modifications. Buzz Wachler said the final gold casting "requires a lot of finishing work."

He said that's especially true with these which are intricately done with as much detail on a surface the size of a quarter or half dollar as one would expect to find in a full-size etching or painting.

Many of Tassie's subjects are classical in nature. He often borrowed ideas from works in the great private collections of Europe and like all of his contemporaries, did copies of antique gems. He did more than 100 versions of Medusa, for instance, and many characters and scenes from mythology. Later, he and Wedgwood parted company and became bitter rivals. Tassie claimed his molds were truer to the antique gems he used for casting because his paste didn't shrink while, he said, Wedgwood's clay ones did.

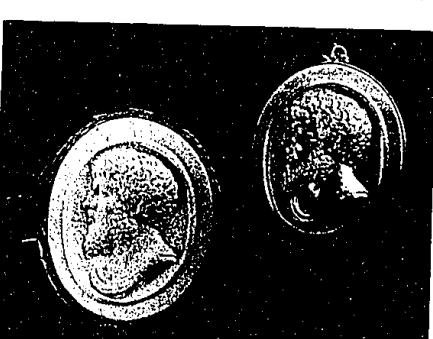
WACHLER'S gold works cast from Tassie's molds may be even closer to the originals than the cameos and medallions which Wedgwood cast because his were in clay and thus underwent some shrinkage.

Once the gold casting is made, more work begins for it must be placed in an appropriately designed

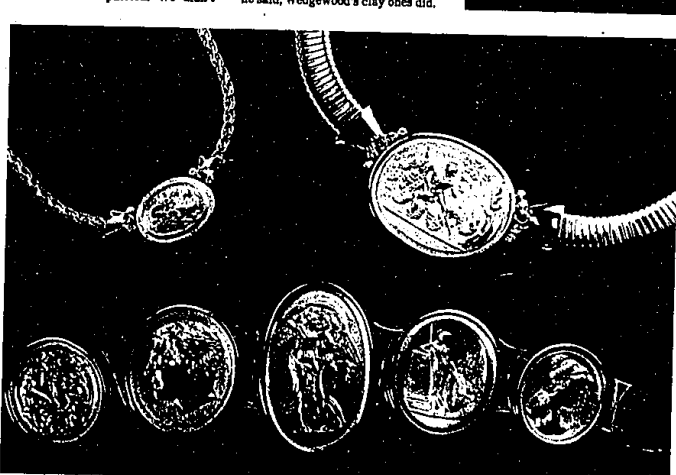
setting, often with diamonds, and soldered in place.

David Wachler, founder of the firm, grandfather to Buzz and Link Wachler, was called upon to set the diamonds which circle one of the larger medallions and they were still in the wax waiting to be sold.

Please turn to Page 2



Close-up of a mold made by James Tassie, above, illustrates the intricate detail he was able to achieve in his glass paste mixture. Beside it is an 18-Kt gold pendant newly cast from that mold which has been worked and polished to bring out every subtle highlight. At left are two necklaces and a bracelet featuring gold pieces from the 200-year-old molds. The Wachler artistry shows in the design of the settings for these intricately executed pieces.



Staff photos by  
Deborah Booker