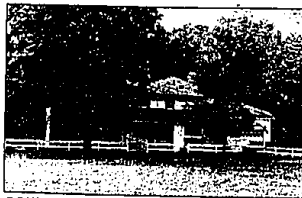


**SPECTACULAR CONTEMPORARY** on 3.11 prime acres in Rochester! Features 3 full baths, walkout lower level, central air, two fireplaces, 3 car garage. Enjoy spectacular views from fantastic glass expanses and multi-level decking overlooking valley. Call for details. 651-8850. \$379,500.



**PREMIUM SETTING**—City of Bloomfield Hills! Quality built home offers flexible floor plan. Three family bedrooms, two guest rooms and maids quarters. 4 1/2 baths, two fireplaces, library also. Majestically situated on treed, sloping setting near Endicott Lake. Beautiful inground pool setting. LAND CONTRACT. 647-5100. \$335,000. (42840)



**COUNTRY PARADISE** with close-in Birmingham conveniences! Unique 5.40 acre setting frames big Colonial with leaded windows, vaulted ceilings, four bedrooms, 2 1/2 baths. Birmingham schools. 3 car garage. 648-6000. \$194,000. (44390)



**CITY OF BLOOMFIELD HILLS** boasts exceptional family home. Five bedrooms, circular drive, microwave kitchen, 3 full baths. Beautifully wooded backdrop! 648-6000. Now \$205,000. (46158)



**SERENE LANDSCAPED** setting frames spacious Bloomfield Hills Quad-level. Two fireplaces, four bedrooms, rec room, storage galore! Bloomfield Hills schools. 847-5100. \$155,000. (47665)



**MEADOWLAKE PRIVILEGES.** Exceptional Ranch includes picturesque landscaped lot in prime Birmingham area. Fireplace and built-ins, beautiful Florida room, Land Contract. 648-6000. \$106,900.



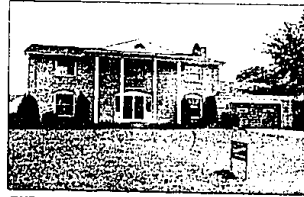
**CUSTOM BUILDERS HOME** designed with loads of exotic Ceramic tile, central air, "hot tub" room, patio, deck too! Dynamic plan includes great room. West Bloomfield Lake Privileges! 626-9100. \$199,900. (47571)



**CUSTOM ROCHESTER** Cape Cod affords country kitchen, finished basement, screened porch, all on private lot overlooking Paint Valley! Term! 651-8850. \$238,000.



**CUSTOM BUILT CONTEMPORARY** on spectacular wooded ravine! Great for entertaining. Features include high cathedral ceilings, loads of glass, multi-level deck. Many energy saving qualities. Birmingham schools. Below Market! 626-9100. \$188,000. (47593)



**EXPANSIVE DEERFIELD VILLAGE** Colonial boasts large open foyer, circular stairs, library, fireplaces in family room and Master bedroom, central air too! Great terms available! 647-5100. \$134,000. (47183)



**UPPER STRAITS LAKE PRIVILEGES!** Country Ranch on spectacular lot! Includes horse barn with loft. Lower level walk out with fireplace. West Bloomfield schools. Assumed! 651-8100. \$124,900. (47500)



**OWN SECLUDED TREED LOT!** Spacious West Bloomfield Colonial offers the ideal family home. Fireplace in family room, four bedrooms, large patio off family room. Newer roof, wet plaster and other quality features. Very private location, convenient to everywhere! 651-8100. \$127,500. (41104)



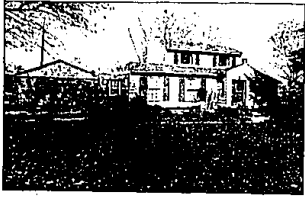
**SHARP NEUTRAL DECOR** is featured with lovely Rochester Ranch on matured treed setting. 4 bedrooms, family room, air conditioning and more! 651-8850. \$105,900.



**COUNTRY LIVING** in Troy is featured with six bedroom home plus in-law suite with private entrance. Above ground pool, hot tub, wood deck, on wooded lot! 689-8900. \$89,900. (47689)



**BIRMINGHAM!** Spacious four bedroom plan includes family room, finished rec room with second kitchen, new womanized deck, central air too! 648-6000. \$109,900. (47551)



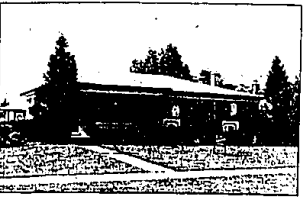
**OVER THE BRIDGE** to your new home with water on two sides! Beautiful Lakefront includes family room, fireplaced living room, decks and exceptional treed setting. Assumption! 651-8100. \$139,000. (47750)



**LOVELY COUNTRY ESTATE** includes beautiful parlor with fireplace and big, formal dining room and library, heated Florida room, 5 bedrooms too! On two acres! 689-8900. \$110,000. (47544)



**BLOOMFIELD HILLS!** Recent updating is featured in good family Colonial offering four bedrooms, newer carpet, gas barbecue, more! Walk to schools, churches, shopping! 647-5100. \$31,900.



**JUST REDUCED!** Sharp family Ranch in great Troy Community! Includes quality features at an affordable price! Newer carpet, great rec room with fireplace. 648-6000. \$81,900. (44494)



**COVENTRY PARK!** Move-in condition highlights impressive three bedroom Condominium. Upgraded carpet, use of clubhouse, pool, saunas too! Assume Land Contract! 689-8900. \$57,000. (41082)



**POPULAR WINDMILL POINTE** boasts exceptional ranch with neutral decor, fireplace, central air, sprinkler system and fenced rear setting. 689-8900. \$69,900. (47806)



**BLOOMFIELD HILLS!** Superb unit includes two bedrooms, two full baths, carpet. Approximately 1410 square feet. Central air too! 647-5100. \$79,900. (41814)

**Chamberlain**  
REALTORS®

**BIRMINGHAM**  
975 S. Hunter  
at 14 1/2 Mile Rd.  
646-6000

**BLOOMFIELD HILLS**  
1520 N. Woodward  
at Long Lake Rd.  
647-5100

**WEST BLOOMFIELD**  
4316 Orchard Lake Rd.  
at Lone Pine Rd.  
851-8100

**FARMINGTON HILLS**  
FRANKLIN  
31000 Northwestern Hwy.  
at 13 Mile Rd.  
626-9100

**TROY**  
5017 Rochester Rd.  
at Long Lake Rd.  
689-8900

**ROCHESTER**  
1000 W. University  
(in Meadowbrook Plaza)  
651-8850

