

Charity... in the cards



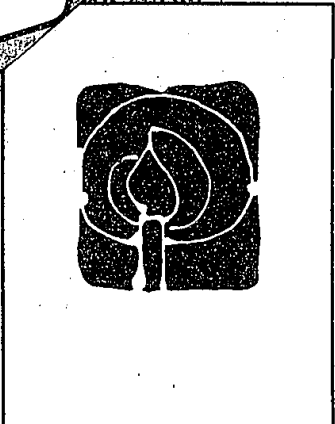
Just as it's better to give than receive, it's satisfying to greet friends and loved ones with a card bought from a charitable organization. Whether you choose a stylized Christmas tree, a whimsical Santa Claus or an artist's rendition of the nativity scene, the choosing and the sending are gestures full of love and charity.

Yule cards sold by organizations help battle disease; support mentally retarded and physically handicapped persons; and make life less mean and more meaningful for people who need help.

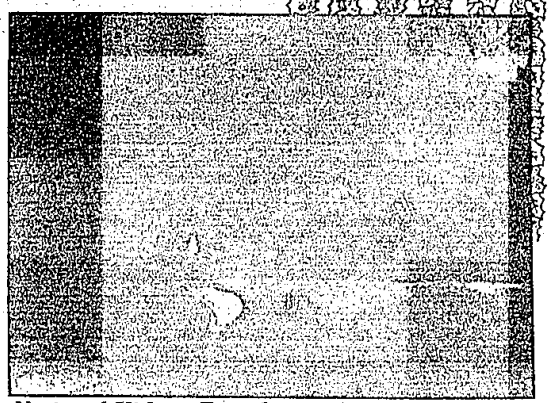
See page 20 for INFORMATION ON CARDS



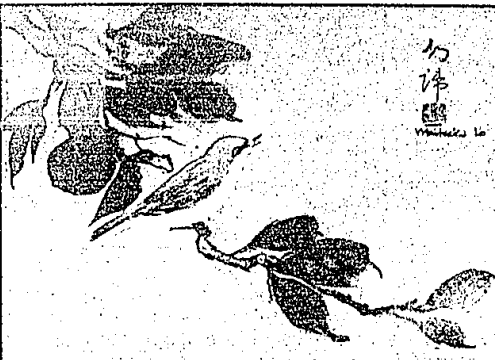
National Asthma Center



United Nations Children's Fund (UNICEF)



National Kidney Foundation



Myasthenia Gravis



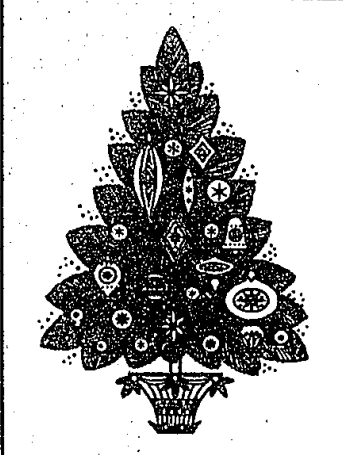
St. Jude's Children's Research Hospital



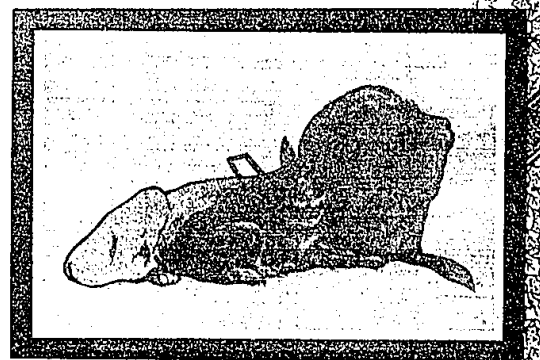
American Heart Association



Sudden Infant Death Syndrome



Arthritis Foundation



Leader Dogs for the Blind

