

exhibitions

Continued from Page 2

● RUBINER GALLERY

Recent works by Michigan's nationally known sculptor Glen Michaels. These bas reliefs and free-standing works are a continuation of his use of tiles, stone, wood and metal elements and for the first time, bronze castings. Continues through Dec. 8. Hours are 10 a.m. to 5:30 p.m. Monday-Saturday, 7001 Orchard Lake, West Bloomfield.

● XOCIPHILLI GALLERY

Drawings, photography and the installation of her complete studio should make this show by Rita Dibert a highlight of the fall gallery season. Originally from Flint, now an assistant professor at Pomona College of California, Dibert's work is shown throughout the country. Continues until Dec. 10, 540 N. Woodward, Birmingham.

● VENTURE/HABATAT GALLERIES

The upper level Habatat Gallery is showing works in glass by Kyohji Fujita of Japan through Dec. 3. Venture Gallery, downstairs, has an exhibit, "Collaborative Works in Translucent Porcelain" by Curtis and Susan Benzle. Hours for both galleries are 10 a.m. to 5 p.m. Tuesday-Saturday, until 9 p.m. Friday, 28235 Southfield, Lathrup Village.

● ROBERT L. KIDD ASSOCIATES

Paintings by Valentina Dubasky are on display through Dec. 8. Her large

abstracted images are of stags, horses and other animals seem slightly reminiscent of prehistoric cave paintings. Hours are 10:30 a.m. to 5:30 p.m. Tuesday-Saturday, 107 Townsend, Birmingham.

● DONNA JACOBS GALLERY

Recent gallery acquisitions including bronze bells from Luristan and Amalash, Greek pottery from Corinth, Cyprus, attle and apulia and new Pro-Columbian pieces are part of the 1983 Holiday Show which continues through 1983. Hours are 11 a.m. to 5:30 p.m. Tuesday-Saturday, 574 N. Woodward, Birmingham.

● HOOBERMAN GALLERY

Contemporary porcelain by Marek Cuccia and fine furniture by Jose Reguero continue through the end of the year. Cuccia, born in Poland, now living in New York City, divides his energies between functional objects and sculptural expression. Reguero's art deco inspired workmanship includes many exotic woods, color and grain patterns. Born in Cuba, he now lives in Rochester. During December the gallery will also have a large selection of gift items. Hours are 10:30 a.m. to 5 p.m. Tuesday-Saturday, 155 S. Bates, Birmingham.

● CLANBROOK ACADEMY OF ART MUSEUM

"Chamber Works," architectural drawings by Daniel Libeskind and graphic and product designs by Katherine and Michael McCoy will continue

through Jan. 22. Hours are 1-5 p.m. daily except Monday, 500 Lone Pine, Bloomfield Hills.

● APPLE FRAMES AND GALLERY

Sculptural reliefs, acrylic and oil paintings by Suzanne M. Young continue through Dec. 17. Hours are 10 a.m. to 5 p.m. Monday-Thursday, until 6 p.m. Friday and until 4 p.m. Saturday, 409 S. Main, Royal Oak.

● ILONA AND GALLERY

This gallery of handmade everything — clothes, jewelry, pottery and ceramics, fiber, glass and paintings — has moved to a new, larger location in Hunters Square, Farmington Hills. Hours are 10 a.m. to 5:30 p.m. Monday, Tuesday, Saturday and until 9 p.m. Wednesday, Thursday and Friday. Sunday hours are noon to 5 p.m., 14 Mile and Orchard Lake.

● MACOMB COMMUNITY COLLEGE

Sculpture by Lola Sonnenschein of Birmingham and drawings and paintings by Doug DeGooch are on display in the Center Campus Gallery, 4475 Carfield Road at Hall Road, Mt. Clemens through Nov. 27. Hours are 9 a.m. to 5 p.m. Monday-Friday and during the winter performances. Sonnenschein makes large cast paper sculptures that seem to defy gravity in their combination of durability and fragility.

● DETROIT GALLERY OF CONTEMPORARY CRAFTS

Major teapot exhibit features works

by 37 ceramists from across the country. Continues through the month. Hours are 11 a.m. to 5 p.m. Monday-Saturday, 301 Fisher Building, Detroit.

● ALEXANDER J. BONGIORNO GALLERY

Tabletop sculpture becomes jewelry in the hands of sculptor/goldsmith Mark Beltychenko. His limited edition pieces are on display at this gallery, 2733 West Big Beaver, (Somerset Mall), Troy.

● ARNOLD KLEIN GALLERY

Works in color pencil and pastel by Donella Reese Vogel will be displayed through November at the Arnold Klein Gallery, 4550 N. Woodward, Royal Oak. Gallery hours are 11 a.m. to 5:30 p.m. Tuesday-Saturday.

● SIXTH STREET GALLERY

"Friends, Relatives and Other Strangers," recent paintings by Shoshana Gumbert, will be displayed through Dec. 7 at the Sixth Street Gallery, 214 W. Sixth, Royal Oak. Gallery hours are 10 a.m. to 5 p.m. Tuesday-Saturday.

● DONALD MORRIS GALLERY

Major exhibition of works by one of the great contemporary painters, Jean Dubuffet, will continue through December. "Jean Dubuffet, Two Decades: 1942-1982," consists of 36 paintings and 10 major works on paper. Gallery hours are 11 a.m. to 5 p.m. Tuesday-Saturday, 105 Townsend, Birmingham.

● DETROIT INSTITUTE OF ARTS

"Photographs from Detroit Collec-

tions" in the beautiful new Albert and Peggy de Salle Gallery of Photography continues through Nov. 27. The gallery, a gift of the lady who continues to be so influential in the state art scene, is a striking addition to the other galleries and one whose time has come. More than 80 well-preserved examples of rare early Islamic fabrics known as "liraz" will be displayed through Jan. 6. This is the first showing of these 10th-13th-century textiles from the museum's permanent collection. Open during regular museum hours, 9:30 a.m. to 5:30 p.m. Tuesday-Sunday, 5200 Woodward, Detroit.

● COUNTY GALLERIA

Juried exhibit of paintings by members of the Farmington Artists Club continues through November. Open during regular business hours, 1200 N. Telegraph, Pontiac.

● SCHWEYER-GALDO GALLERIES

"Richard Pousette-Dart: The Vision of a Poet" brings one of the important artists of our time to Birmingham. This first generation New York School abstract expressionist has had two one-man exhibitions at the Whitney Museum of New York and a solo traveling exhibition organized by the Museum of Modern Art. Show continues through Dec. 3. All 15 paintings were done specifically for this show. Hours are 11 a.m. to 5:30 p.m. Tuesday-Saturday, 330 Hamilton Row, Birmingham.

● SUSANNE HILBERRY GALLERY

"Drawings," which continues through November, includes works by Lee Krasner, Alex Katz, Philip Guston, John Egner, Iain Scanga, Joel Shapiro and many more equally well-known artists. Hours are 11 a.m. to 6 p.m. Center for Crafts is on exhibit here through Nov. 17. Hours are 10 a.m. to 6 p.m. Monday-Saturday, 10125 E. Jefferson, Detroit.

● BIRMINGHAM BLOOMFIELD ART ASSOCIATION

Faculty exhibition continues through Nov. 19. More than 50 instructors were invited to exhibit. The art association, 1516 S. Cranbrook, Birmingham, is open 9:30 a.m. to 4:30 p.m.

● DETROIT FOCUS

Works by more than 50 Detroit artists, a show with one of the largest entry fields for painting and drawing continues through Nov. 19. The gallery is at 743 Beaubien, Detroit. Hours are noon to 6 p.m. Wednesday-Saturday.

● HALSTED GALLERY

Photographs by Edward S. Curtis are some of the most memorable in documenting the way of life of the American Indian. Photographs and oral tones of Curtis's work will be on exhibit through November. There is also a selection of North American Indian baskets. Hours are 10 a.m. to 5:30 p.m. Wednesday-Saturday, 560 N. Woodward, Birmingham.

Helping kids find buried treasure

By Corinne Abalt
staff writer

For an older generation, one of the joys of childhood was learning to read. Older brothers and sisters traded books and hinted at the wonders and excitement within the pages of "Held" and later "The Wizard of Oz," "Treasure Island," "Robinson Crusoe," and many of the stories by Mark Twain along with a host of other classics.

To be able to read well enough to join this privileged group was a goal to be won and savored. They played games with Robin Hood themes, considered "Alice in Wonderland" a takeoff for all kinds of imaginative projects and imitated the actions of the Wicked Witch of the East.

Dr. Sue Gillespie Martin and Harriet Hope Green, both local residents, have just published "Treasure Hunts," an activity book for Grades 4-7, subtitled "Creative Projects for Discovering Classic Literature," that will help today's youngsters find these same joys.

THE TWO AUTHORS, both carrying impressive credentials, have put together an attractive package to lure young readers into some of the great literature for young people.

Wisely, Martin and Green remained true to the original flavor of each classic, while presenting their projects in a 1980s idiom. This conjunction of past and present, which seems so natural, is a carefully thought out, well-conceived approach. It deserves praise.

To illustrate, one of the projects for "The Wizard of Oz" is titled "Punny Thing Happened on the Way to Emerald City." Another for "The Merry Adventures of Robin Hood" is called "Backpacking Through Sherwood Forest." And still another is "Around in World with Gulliver" and "The Lupton Good Chain."

The projects that go with these and other titles are equally provocative. The youngsters will be marking Crusoe's island, af-

ter he returns to England, for condominium development, exercising their manners at the Widow Douglas' Finishing School and spending Long John's Silver's booty.

AS OPPOSED to watching movies made from the books, these projects demand involvement, and that in turn lets the child become a part of the literature. From then on, that story is a part of the child's life, something to be remembered and enjoyed for a lifetime.

Martin is professor of drama in education at the school of Dramatic Art, University of Windsor, and Green is creative drama specialist and teacher in the Birmingham public schools. They also co-authored, "Sprouts: Projects for the Creative Development of Children."

Designed to be used by the classroom teacher, this book, illustrated by Gerald Melton, is published by Good Apple Inc. of Carthage, Ill.

Oriental Society hosts archeologist

Michigan Oriental Art Society will hold a program at 2:30 p.m. Sunday, Dec. 4, at the auditorium of William Beaumont Administrative Services Building, 3501 13 Mile, Royal Oak.

The meeting of this non-profit educational society is open to the public free of charge.

SOUTHFIELD OPEN SUN. 1-4

21205 CONSTITUTION. Popular Mt. Vernon Sub. Spacious 4 bed, many new features. \$127,900.

FRANCHISE LOVERS. Terrific layout on this 2 bedroom beauty. Family room, fireplace, central air, 2 car attached garage, gorgeous tile floor, granite system, formal dining room, plus large kitchen. \$84,900.

WEST BLOOMFIELD

MAGNIFICENT 4 bedroom, 2 1/2 bath colonial. 14 Mile - Midpoint area. Great room with fireplace plus antique garden room. Finished rec. room, open floor plan, newly redecorated throughout. Large wood deck. Asking \$119,900.

Pomeroy - Realtors

559-3344

FINAL PHASE
Champagne Open House
Saturday and Sunday
LAUREL WOODS CONDOMINIUMS
A beautiful planned Community in Livonia.
PRICED FROM... \$77,900
Large 2 bedrooms, 2 bath ranch homes with private balcony in dining area, a laundry room, garage.
OFFICIALS 12-6 PM
SAT & SUN 12-5 PM
CLOSED THURSDAY
MODEL
591-1771
BROKERS WELCOME



EXCEPTIONAL BUY WITH GREAT TERMS

- Beautifully maintained, attractive decor
- New carpeting, modern kitchen, library
- Natural fireplace, 5 bedrooms, 3 1/2 baths
- Pool privileges, land contract terms.
- \$108,000

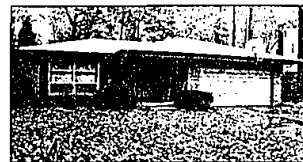
547-2000



JUST REDUCED

- Chic contemporary in Sodon Lake Area
- 4 bedrooms, 2 baths, recreation room
- State through foyer, kitchen and dining area
- Tennis Court
- \$199,900

540-6777



ENTERTAINER'S DELIGHT

- New decor-not even a nail hole
- Refined floors, decorator blinds
- Super new deck, rec room with bar
- Mature trees, fine Southfield sub
- \$74,900 GOOD ASSUMPTION

643-8500



RESORT LIVING

- Stunning contemporary condo
- Spectacular pond view
- Ceramic foyer, mirrored hallway, recessed lights
- Decorator wallpaper, Parquet floor in kitchen
- \$89,900

540-6777



STERLING HEIGHTS QUAD

- Simple Assumption, 9%
- Open floor plan, 4 bedroom Quad
- 2 full baths, Cathedral beamed ceiling
- All kitchen appliances
- \$76,900

643-8500



SPACE PREVAILS

- Large brick ranch
- Marmouth family room
- Country kitchen, full basement
- Large lot
- Asking \$96,900

643-8500



BIRMINGHAM-SUPERB QUALITY + COMFORT

- 4 bedroom colonial, central air
- Prestigious Area, 2 1/2 baths
- Parklike setting, POOL, circular drive
- Family room, attached garage
- LAND CONTRACT TERMS \$199,000

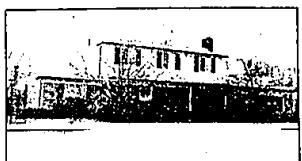
557-6700



PRICED TO SELL

- Pillared Colonial in prestigious neighborhood
- Treed area
- Four bedrooms, 2 1/2 baths
- Central Air, loads of storage space
- \$129,900

540-6777



BIRMINGHAM SCHOOLS - JUST LISTED

- 2300 Sq. Ft., 4 bedrooms, 2 1/2 baths
- Family room, carpeted basement
- Central Air, all appliances
- Immediate Occupancy, corner lot
- \$53,900 SIMPLE ASSUMPTION

557-6700



COMPLETELY REMODELED

- Lovely 3 bedroom ranch in Troy
- Large lot with many beautiful trees
- First floor laundry and 1 1/2 baths
- Family room, fireplace, 2 1/2 car attached garage
- \$32,900

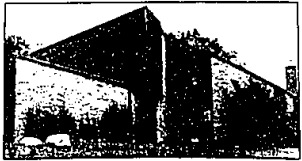
643-8500



ENTERTAIN THIS HOLIDAY SEASON IN STYLE

- Four bedrooms, library, marble foyer
- Pillared living room
- 43 x 26 party room with wet bar
- Immediate Occupancy
- \$348,000

540-6777



CONTEMPORARY ELEGANCE

- Energy efficient and spacious
- 4 bedrooms, 2 1/2 bathrooms
- Gourmet kitchen with Jenn-air
- Ceramic entry
- \$229,000

540-6777

SOUTHFIELD/LATHRUP
26840 Southfield Rd.
557-6700

ROYAL OAK
206 N. Woodward
547-2000

BE Chamberlain
Real Estate Co.

BIRMINGHAM
1998 Southfield Rd.
540-6777

TROY
1985 W. Big Beaver Rd.
643-8500

SALE POSITIONS AVAILABLE...CALL Today