

# Kent PRESENTS two week TV Entertainment

A SCHEDULE OF MOVIES, SPORTS AND SPECIAL INTEREST PROGRAMMING

PROGRAMS SUBJECT TO CHANGE

**movies**  
**FRI. APRIL 27**  
 9-11PM CBS (8 Central/Mountain)  
**BORDERLINE**  
**BRONSON**

Charles Bronson as Job Maynard, a border patrol officer who works the dividing line between Mexico and California

**SAT. APRIL 28**  
 9-11PM CBS (8 Central/Mountain)  
**TOM HORN**

STEVE McQUEEN  
 LINDA EVANS  
 RICHARD FARNSWORTH  
 BILLY GREEN BUSH  
 SLIM PICKENS

**SUN. APRIL 29**  
 9-11PM NBC (8 Central/Mountain)  
**SPECIAL BULLETIN**. The world watches in horror, via live TV coverage, as Charleston, South Carolina, is on the edge of total

destruction when nuclear protesters threaten to blow up the city with a nuclear device unless warheads stored in the vicinity are deactivated. Realistic and horrifying. Hang out

**CHAINED TWO**  
**JAMES CAAN**  
**MARSHA MASON**  
**VALERIE HARPER**  
**CHAPTER TWO**. Marriage creates more problems than it solves, but love makes everything just a wee bit lovelier - and much more amusing - the second time around in the Neil Simon Comedy.

**MON. APRIL 30**  
 9-11PM NBC (8 Central/Mountain)  
**ADAM**

**DANIEL J. TRAVANTI**  
**JOBETH WILLIAMS**  
**MARTHA SCOTT**  
**RICHARD MASUR**  
**MASON ADAMS**  
**PAUL REGINA**  
**JOHN BOSTON**  
**ADAM**. The multi-award-winning movie which resulted in the finding of 15 missing children across the country and making millions of viewers aware of the plight of missing youngsters and their distressed parents. Film is based on the true story of Florida businessman John Walsh, portrayed by Daniel J. Travanti and his wife Revo, played by Jobeth Williams, whose 6-year-old son, Adam, was kidnapped in July, 1981.

**PLAYERS**  
**ALI MacGRAW**  
**DEAN-PAUL MARTIN**  
**MAXIMILIAN SCHELL**

**BEING THERE**  
**PETER SELLERS**  
**SHIRLEY MacLAINE**  
**JACK WARDEN**  
**MELVYN DOUGLAS**  
**BEING THERE**. Peter Sellers stars as "Chance", an illiterate gardener who has lived all his life inside the walls of a house and garden. When forced out and literally by accident, he becomes a celebrity and toast of the town. A charmer.

**PLAYERS**  
 Life has been an ongoing out call for a tennis bum, but every thing starts to turn acce for him when a gorgeous house-jet-setter sets out to make him a winner.

**TUES. MAY 1**  
 9-11PM CBS (8 Central/Mountain)  
**ALL NIGHT LONG**

**GENE HACKMAN**  
**BARBRA STREISAND**  
**KEVIN DOBSON**  
**DENNIS QUAD**  
**DIANE LADD**

**ALL NIGHT LONG**. Gene Hackman stars as a man totally frustrated by his middle-management job with a large drug store concern - gets into a brawl with top executives and is demoted to night manager of one of their all-night stores. The fall down the executive ladder lumbies into problems with his wife and his teenage son.

**WED. MAY 2**  
 8:30-11PM CBS (7:30 Cent./MT)  
**BEING THERE**

**PETER SELLERS**  
**SHIRLEY MacLAINE**  
**JACK WARDEN**  
**MELVYN DOUGLAS**  
**BEING THERE**. Peter Sellers stars as "Chance", an illiterate gardener who has lived all his life inside the walls of a house and garden. When forced out and literally by accident, he becomes a celebrity and toast of the town. A charmer.

**THUR. MAY 3**  
 9-11PM NBC (8 Central/Mountain)  
**THE CHANGELING**

**GEORGE C. SCOTT**  
**TRISH VAN DEVERE**  
**MELVYN DOUGLAS**  
**JEAN MARSH**

Academy-award winner George C. Scott stars as a widowed academic who moves into an old house haunted by the spirit of a murdered child.

**FRIDAY MAY 4**  
 8:30-11PM CBS (7:30 Cent./MT)

**THE WIZ**  
**DIANA ROSS**  
**MICHAEL JACKSON**  
**NIPESE RUSSELL**  
**TED ROSS**  
**LENA HORNE**  
**RICHARD PRYOR**

**THE WIZ**. Sidney Lumet's lavish fantasy based on the hit Broadway play. The tureful update turns Oz into a fantasy version of New York City, a land filled with wonder and danger.

**SUN. MAY 6**  
 8-11PM ABC (7 Central/Mountain)  
**THE LAST DAYS OF POMPEII**

**THE LAST DAYS OF POMPEII**. The spectacular historic drama about the lovers and loaths, the schemers and villains, who dream on in Pompeii until their power-mad world explodes!

**FRANCO NERO**  
**SIR LAURENCE OLIVIER**  
**LESLEY-ANNE DOWN**  
**OLIVIA HUSSEY**  
**QUINLAN REGEHR**  
**NICHOLAS CLAY**  
**LINDA PURL**  
**NED BEATTY**  
**ANTHONY QUAYLE**  
**ERNEST BORGNINE**  
**BRIAN BLESSED**  
**SIOBHAN MCKENNA**

**THE LAST DAYS OF POMPEII** (Part II). The spectacular historic drama about the lovers and loaths, the schemers and villains, who dream on in Pompeii until their power-mad world explodes!

**V-THE FINAL BATTLE**  
**V: THE FINAL BATTLE** (Part I). The six-hour continuation of last season's blockbuster miniseries about an alien invasion of Earth.

**MON. MAY 7**  
 9-11PM NBC (8 Central/Mountain)  
**V: THE FINAL BATTLE** (Part II)

**TUES. MAY 8**  
 9-11PM ABC (8 Central/Mountain)  
**THE LAST DAYS OF POMPEII** (Conclusion)

**AGATHA CHRISTIE'S**  
**THE MURDER OF AGATHA CHRISTIE**

**Sports**  
**SAT. APRIL 28**  
 1:15PM-4PM NBC (12:15 Cent./MT) **BASEBALL: Game of the Week...** St. Louis Cardinals at Montreal Expos. (Alternate Game, Atlanta Braves at Houston Astros.)

1:30-3:00PM CBS (12:30 Cent./MT) **TENNIS**. Finals of the women's professional United Airlines tennis tournament from Orlando, Florida. Pat Summerall, Tony Trabert and Virginia Wade will provide commentary.

3:30-6PM CBS (2:30 Cent./MT) **NBA PLAYOFF**. Conference Semifinal.

4:4PM NBC (3 Central/Mountain) **GOLF**. Liberty Mutual Legends of Golf. Live coverage of the third round of professional men's golf.

**SUN. APRIL 29**  
 1-6PM CBS (12 Central/Mountain) **NBA PLAYOFF**. Conference Semifinal doubleheader.

2-4PM NBC (1 Central/Mountain) **SPORTSWORLD**. Highlights.

2:30-6PM ABC (1:30 Cent./MT) **PRO FOOTBALL**. Iba.

4-6PM NBC (3 Central/Mountain) **GOLF**. Liberty Mutual Legends of Golf. Live championship round coverage of professional golf.

**SUN. MAY 6**  
 1-6PM CBS (12 Central/Mountain) **NBA PLAYOFF**. Conference semifinal doubleheader.  
 2:30-4:30PM NBC (1:30 Cent./MT) **GOLF**. Morry Tournament of Champions.  
 2:30-6PM ABC (1:30 Cent./MT) **PRO FOOTBALL**. Iba.  
 4:30-6PM NBC (3:30 Cent./MT) **SPORTSWORLD**.

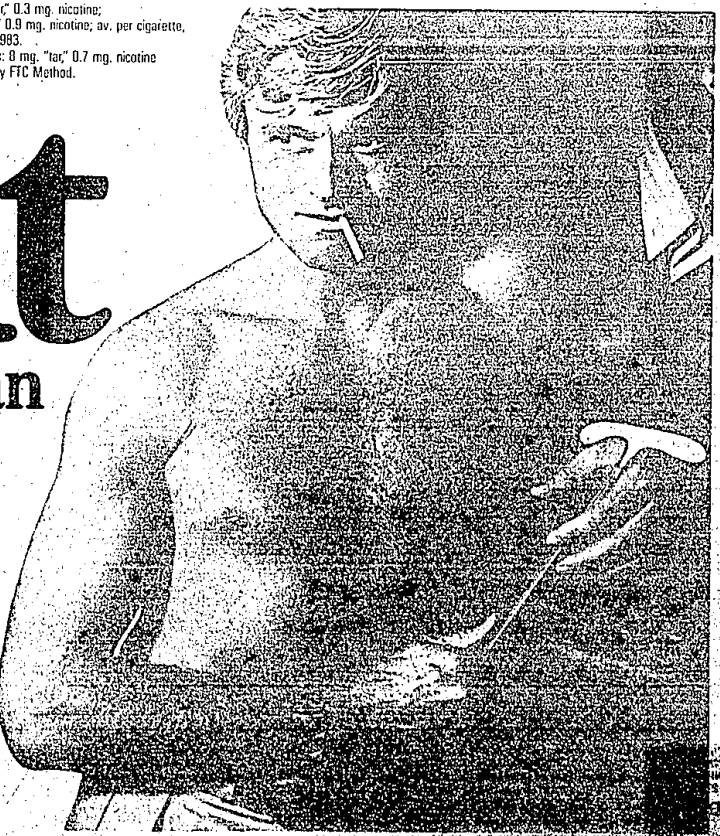
Warning: The Surgeon General Has Determined That Cigarette Smoking Is Dangerous to Your Health.

Kent III: 2 mg. "tar," 0.3 mg. nicotine;  
 Kent: 12 mg. "tar," 0.9 mg. nicotine; av. per cigarette, FTC Report Mar. 1983.  
 Kent Golden Lights: 8 mg. "tar," 0.7 mg. nicotine av. per cigarette by FTC Method.

PROGRAMS LISTED ARE CHOSEN AT THE SOLE DISCRETION OF CORNELIUS DONOVAN ASSOCIATES, INC.

# Kent

Taste you can count on.



© 1984 U.S.A., 1984