

# Observer & Eccentric

## NEWSPAPERS

present

# A TRAVEL BONANZA!

Choose one or more of these fun-filled vacations!

Tours include all transportation via scheduled airlines or motor coach, hotel accommodations in fine resort hotels, sightseeing and these special services—to-your-room luggage handling, round trip personal transfers throughout, native-born professional escorts, tips for all luggage handling, transfer and hotel services.

FOR COMPLETE INFORMATION AND BROCHURES  
-- MAIL COUPON BELOW TODAY --  
OR CALL 278-4102

\* (Tour prices are based on rates and tariffs in effect March 1, 1984 and The Observer & Eccentric Newspapers reserves the right to adjust tour prices in the event of changes therein. Subject to price approval by Civil Aeronautics Board)

## MEXICO FIESTA!

12 Days--11 Nights  
Depart: Monday, November 5, 1984  
Return: Friday, November 16, 1984

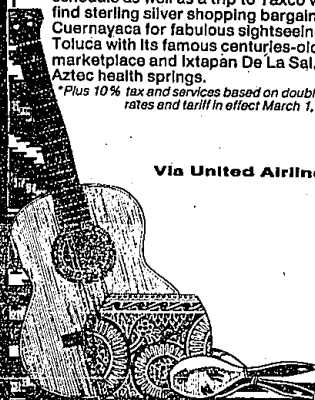
### \$725\*

per person

Your trip will take you to Mexico City where you will enjoy a welcome cocktail party, exciting sightseeing, floating gardens of Xochimilco, La Fiesta Brava and the bull fights with the best seats! Also on your tour is University City, the Ballet Folklorico and Acapulco where you will board a yacht for a cruise of Acapulco Bay. Spectacular La Quebrada High Divers are on the schedule as well as a trip to Taxco where you'll find sterling silver shopping bargains and Cuernavaca for fabulous sightseeing. You'll visit Toluca with its famous centuries-old Indian marketplace and Ixtapan De La Sal, the ancient Aztec health springs.

\* Plus 10% tax and services based on double occupancy and rates and tariff in effect March 1, 1984

Via United Airlines



## VACATION WEST

UNITED AIRLINES: Detroit to Los Angeles  
DELUXE MOTOR COACH Return

15 Days--14 Nights  
Depart: Friday, August 17, 1984  
Return: Friday, August 31, 1984

### \$699\*

per person

This exciting trip includes St. Louis Gateway to the West Golden Arch, Old Abilene Town, Kansas, a city tour of Denver, Colorado, Estes Park and the Rocky Mt. National Park. You will see the Flaming Gorge National Recreational Area in Utah, Salt Lake City and the Salt Flats, Reno, Nevada. Enjoy a city tour of San Francisco, California and visit Chinatown and the Golden Gate Bridge. Browse along the famous Fisherman's Wharf, Famous Highway #1, Big Sur, Hearst Castle. Take a city tour of Los Angeles and tour Universal Studios.

\* Plus 10% tax and services based on double occupancy and rates and tariff in effect March 1, 1984.

## FLORIDA EPCOT SUNSHINE TOUR!

Deluxe Motor Coach

14 Days--13 Nights  
Depart: Saturday, January 26, 1985  
Return: Friday, February 8, 1985

### \$489\*

per person

Your price includes a super sightseeing route -- Daniel Boone National Forest, Blue Grass Country, Great Smokey Mountains, World's Fair site, Chattanooga Choo Choo, Stone Mountain Park, Sunshine Skyway, Miami Beach--Plus admission to these exciting Florida attractions: Everglades Airboat Ride, John F. Kennedy Space Center, Disney World and The Fabulous New Walt Disney Epcot Center!

\* Plus 10% tax and services per person based on double occupancy and rates and tariff in effect March 1, 1984



Please send me at no obligation--a tour brochure explaining all the details and applications for the following tours:

☐ FLORIDA ☐ MEXICO ☐ HAWAII ☐ WEST

NAME \_\_\_\_\_

ADDRESS \_\_\_\_\_

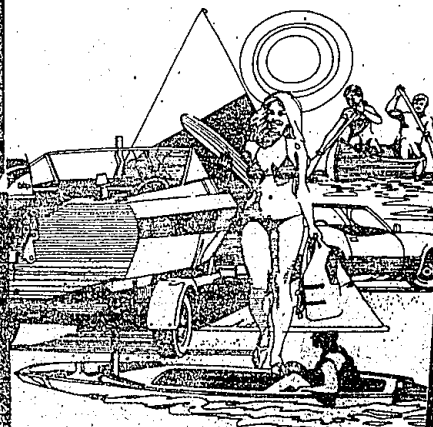
CITY \_\_\_\_\_ STATE \_\_\_\_\_ ZIP \_\_\_\_\_

PHONE \_\_\_\_\_

Clip and Mail to:

**YOUR MAN TOURS**

24824 MICHIGAN AVENUE  
DEARBORN, MI 48124 Call 278-4102  
Attention: Observer & Eccentric Travel Desk



## HAWAIIAN TOUR

15 Days--14 Nights  
Depart: Friday, April 19, 1985  
Return: Saturday, May 4, 1985

Via American Airlines

### \$1,349\*

per person

Your Hawaiian Tour highlights include:

**WAIKIKI**  
Deluxe Aloha Cocktail Party  
Flower Lei Aloha Greeting  
City Tour of Old and New Honolulu  
Punch Bowl  
Iolani Palace  
Manoa Residential District  
International Market Place  
Pearl Harbor Cruise  
**KAUAI**  
Waimea River Boat Cruise  
Fern Grotto  
**KONA and HILO**  
Black Sand Beach  
Mauna Loa and Kilauea Volcanoes  
Thurston's Lava Tube  
Giant Fern Tree Forest  
Famous Volcano House  
Banyan Tree Drive  
Rainbow Falls  
Luau  
**MAUI**  
Mysterious Valley Excursion  
Old Whaling Capital of Lahaina  
Fabulous Kaanapali Resort

\* Plus 10% tax and services based on double occupancy and rates and tariff in effect March 1, 1984