

# Try an easy-to-make bird feeder

One of the bonuses from travel is to bring back ideas to share with others. While in New Zealand, I found the gardeners there have an excellent method of preserving their choice roses. This is an idea you may wish to try on your garden roses.

Select a rose bud that is just beginning to show color. Cut the stem as long as possible. Dip the stem in wax. When the wax has set, wrap tissue paper around the bud and stem, pack in a box, and store in a dry, cool place. When needed, cut off the waxed stem and place in temperate water. You may use this same method with lilies of the valley.

Here are some other novelty ideas that may appeal to you:

For decorative pot culture, plant a shrub with red stems as an accent; Swiss chard may also be used for this purpose.

Another accent can be achieved by planting purple cabbage in a flower pot. It and cherry tomatoes offer a wonderful conversation piece. These vegetables in their ornamental pots should be fed every two weeks.

**THE FOLLOWING** ideas for making an easy bird feeder was given to me by Don Tyler:

Begin with a 10-inch round flower-pot tray. Turn a six-inch pot upside down on this saucer. On top of the over-turned pot, place a seven-inch plant tray. Turn upside down on this tray a four-inch pot.

You may firm the different layers with posey-clip.

The two tiers provide a good place for mixed bird seed and entertainment for all watchers — un-

less you have a vigilant cat who likes to chase birds.

Many of you will have occasion to travel to New England for the summer holidays. You will see many gardens with large rocks used as accents. These rocks provide a good backdrop for daisy-type flowers. These medium-stemmed flowers stand tall enough to escape the heat of the stones on a hot day. If you had a creeping plant on the stones, it would rebel against the heat of a warm day.

Whether you travel to New England or up into Michigan, you may be tempted to bring a rock or two home to place in your garden as a souvenir of your trip. You may get so enthusiastic over this rock collection deal that you may forget the source. So be it. Just enjoy the effect.

IF YOU are going to be in the Baltimore area this summer, you will enjoy visiting the Ladew Topiary Gardens. They are 20 miles north of Baltimore on 22 acres of land with many gardens to please specialized growers.

There is, for instance, a tall topiary yew hedge that is shaped with waves and a dozen swans swimming. It takes five men 10 days to trim this one hedge. The other sculptured animals include a sea horse, a unicorn, birds, butterfly, fish — plus a large top hat and a replica of Winston Churchill's World War II "V for Victory" sign.

Many of you who have been visiting EPCOT Center in Florida have seen numerous examples of topiary art.

Wouldn't it be fun to have a topiary contest here, using privets, which love Michigan winters? We

know this plant grows fast and likes our climate.

Do you know how to tell the temperature by the chirps of a cricket? Count the number of chirps for 15 seconds and add 39.

The resultant number is the nearly exact Fahrenheit temperature. Try it some warm summer evening.

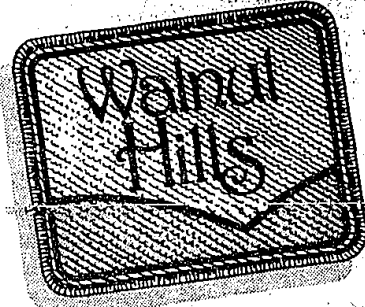


down to earth

Alice  
Burlingame

**GRAND  
OPENING**

**Bloomfield's  
Designer Label**



The ultimate condominium. Open daily & weekends 12-5 PM

Walnut Lake Road just West of Drake Road.

Phone 661-0338 or 557-2080

From \$99,990

Ask about our special financing

Custom built by  
**Herbert Lawson, Inc.**  
and  
**Abbey homes**

Presented by

**HL Herbert Lawson, Inc.**



## State's touring groups perform at conference

The Touring Services Agency, a project of the Michigan Council for the Arts, invites presenters of the performing and visual arts in Michigan to attend a Booking Information Conference. A full day of exhibits and showcases by touring arts groups and a workshop is planned for Saturday, Sept. 8, at the Midland Center for the Arts.

The musical groups, dance and theater companies, traveling exhibitions and film organizations taking part are all listed in the new Directory of Michigan Touring Arts Attractions.

Touring groups will offer live and videotaped performances and promotional exhibits. Representatives from the touring groups will be available to discuss booking information.

The conference will begin with a welcome address by Dr. Oscar E. Remick, chairman of the Michigan Council for the Arts and president of Alma College.

A workshop for arts presenters and touring groups will provide information on how to apply for

a Touring Grant from the Michigan Council for the Arts, "negotiating contracts," "block booking," and "event promotion."

The conference fee is \$5 for one person, \$8 for two people from an organization, and \$12 for up to four people from an organization.

Arts presenters invited to send representatives to the conference include community arts agencies, colleges and universities, museums and galleries, auditoriums, civic organizations, schools, parks and recreation departments, festival and fair committees, hotels, clubs, and businesses.

For additional information and a conference brochure, please phone the Touring Services Agency at 517-631-5930.

## Ann Arbor hosts annual art fair

The 14th annual Ann Arbor art fair will be Wednesday, July 25, through Saturday, July 28. Hours are 9 a.m. to 5 p.m. Wednesday-Friday and until 6 p.m. Saturday.

The two locations are State Street between Williams and South Union in front of the Michigan Union and Main Street between Huron and Williams.

There will be approximately 600 artists selling original hand-crafted pieces along with live entertainment in front of the Michigan Union.

## Don't be a heartbreaker

Exercise regularly.



American Heart Association  
WE'RE FIGHTING FOR YOUR LIFE



At Scrapps on the Lake, there's a large all-sports lake... and a 927-acre park reserve with fantastic year-round recreation.

It's located in Orion Township, just 45 minutes from downtown Detroit on I-75.

Lakefront homesites range from \$62,900 to \$75,900. Park homesites — with lake view and park backyard — start at \$99,900.

See our Capaldi-built "See you Capaldi-built" master plan featured by the Builder's Show.



Offered by COLDWELL BANKER/SCHULTZ REALTY  
Hours: 1 to 5 P.M. daily 11 A.M. to 5 P.M. weekends.  
Telephone: (313) 391-1454  
Director: East 83 off I-75 Expressway, North 24 miles on Jordan Road, Left on Scrapps Road.



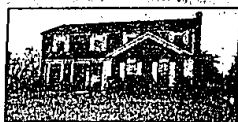
**LOTS OF CHARM**  
describes this elegant 4 bedroom brick ranch in a beautiful treed setting. Great kitchen with new appliances. Lovely brick fireplace in living room and family room. \$145,000 BI  
EKR/V. BLOOMFIELD 855-9100



**DRAMA AND BEAUTY**  
executed by eminent architect Jack Biegrow. Skylighted and cathedral ceilinged family room with privacy deck and library. Deck off dining and breakfast room. 4 bedroom, 2 1/2 baths. \$159,900 LL  
EKR/MAPLE 642-6500



**TROY** presents this stunning 4 bedroom, 2 1/2 bath Colonial on wooded acre lot. Family room, formal dining room, fireplace, central air and first floor laundry. Alarm system. Best of all ASSUMED at 7% just \$84,900  
EKR/TROY 688-3600



**DRASTIC REDUCTION**  
Spacious 4 bedroom, 2 1/2 bath colonial offers family room with fireplace, formal dining room, attached garage, basement and long list of executive amenities in great family sub. Drastically reduced to \$36,900.  
EKR/MIDWEST, INC. 477-0880



**OLD FARM SUB**  
4 bedroom colonial - master bedroom with private bath, breakfast room plus formal dining. Family room opens to large deck for summer leisure. \$113,900 ME  
EKR/V. BLOOMFIELD 855-9100



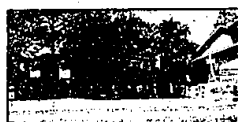
**COUNTRY LIVING**  
Lovely home set on 15 acres, near shopping, schools and easy commuting for the family who desire the best of two worlds. Barn, 2 1/2 car garage, gardens, a must to see. \$159,900 WI  
EKR/MAPLE 642-6500



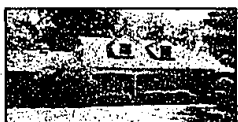
**ASSUME** this sparkling clean Ranch decorated in sharp neutral tones. 3 bedrooms, 1 bath, dining area, living room, wine cellar in basement. Hardwood floors, wet plaster. Expansive wood deck for summer entertaining! Just reduced to \$64,500.  
EKR/TROY 688-3600



**NORTH FARMINGTON HILLS**  
Quality built 4 bedroom, 2 1/2 bath colonial offers family room with fireplace, formal dining room, hardwood floors, natural wood trim, 1st floor laundry and lovely private lot. A steal at \$119,900.  
EKR/MIDWEST, INC. 477-0880



**PINE LAKE**  
Lakefront living is waiting for you summer pleasure. Charming older home, completely remodeled with beautiful decking, gas BBQ, 4 bedroom, 2 1/2 baths, family room and library. Bloomfield Hills schools. \$275,000 MI  
EKR/V. BLOOMFIELD 855-9100



**CHARMING CAPE COD**  
First floor master bedroom, three other bedrooms, three full baths and half bath, walk in butler's pantry. This custom home has much to offer. Central air and family room. \$179,900 WH  
EKR/MAPLE 642-6500



**GLASSY CONDO** in Troy features 2 spacious bedrooms, 1 1/2 baths, slate floor and semi-finished basement. Neutral tones throughout. New carpeting. Enclosed patio with gas BBQ. Fireplace and central air. All of this and more for only \$63,500.  
EKR/TROY 688-3600



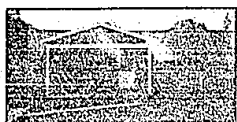
**LAND CONTRACT TERMS**  
Available on this charming 4 bedroom colonial with Walnut lake privileges. Offers formal dining room, den, attached garage, basement, and huge lot in lovely setting. Reduced to \$34,950.  
EKR/MIDWEST, INC. 477-0880



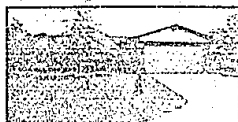
**WEST BLOOMFIELD-ALPHE PLUS**  
Contemporary with 4 bedrooms, 3 baths. Circle drive, sprinkler system, patio, deck, many flowering shrubs. Many extras. Motivated sellers. \$165,000 BI  
EKR/V. BLOOMFIELD 855-9100



**RECENT REDUCTION**  
Country setting just minutes from town. Natural woodwork and leaded windows in this charming 4 bedroom, 2 1/2 bath European styled home. Now 3 car garage. \$169,900 TH  
EKR/MAPLE 642-6500



**SOMETHING SPECIAL** awaits you in this unique Troy Ranch offering 3 bedrooms, 1 bath, living room and basement. Tastefully decorated. Pool in fenced back yard. Penchant country surrounding. FHA-VA Terms available Asking \$37,500.  
EKR/TROY 688-3600



**EXECUTIVE BRICK RANCH**  
Offers 3 bedrooms, 2 1/2 baths, lovely family room with fireplace, huge, modern kitchen, attached garage and basement on beautiful lot backing to commons in most prestigious sub. Reduced to \$112,000.  
EKR/MIDWEST, INC. 477-0880



**WEST BLOOMFIELD  
OFFICE**  
8320 W. Maple Road  
855-9100

**MAPLE  
OFFICE**  
3805 W. Maple at Lahar  
642-6500

**TROY  
OFFICE**  
1251 E. Wadley  
688-3600

**FARMINGTON  
OFFICE**  
31713 Grand River  
477-0880

