

LADY MADONNA

maternity

Presents the
Fall/Winter
Arrival of
Our New
International
Collection.

Classic Cardigan with
Padded Shoulders. Winter
White or Burgundy.
189

Before and After Slim Line
Grey Flannel Skirt
156

325 South Woodward at Brown
Birmingham • 642-1510

Call or Write for Fall/Winter Catalogue



Fall for the big, lean designs

IF THIS season has a message to impart it has to be "Man, oh man!" Women will dress happily in beautifully tailored, fabulous fabric designs that until now have been strictly interpreted in menswear.

But, no more!

The incredible tweed jackets, satin fabrics as in smoking jackets, and wonderful knits as in sweaters that have been tempting, but forbidden, to women are now openly being copied, bringing with them a breezy, at ease elegance women have until now coveted from a distance.

But make no mistake about it, the result of the menswear influence is anything but unisex. The looks are strictly feminine. Silhouettes may take their cue from menswear, but they are cut soft, clean and lean for women. Many designers are using color to draw the line between traditional menswear and the new feminization of the menswear look.

Look for coats that are big enough for two, and, long, long, long. Complement oversize jackets with

layered, body-hugging, long torso tops, frequently in cashmere, and pencil slim skirts or hip pleated and cuffed trousers. Watch for color, pink, purple and yellow, to add punch to these classic clothes.

As you can tell from merchandise now appearing in your favorite stores, the primary look is toward longer skirts, although there will be many options, with lengths descending from short short to ankle length for day and evening.

Among the fabulous silhouettes for fall '84:

- Long, straight and tubular as in a long column coat or a classic lean cardigan sweater and knit skirt.

- Long and clingy as in a sexy knit dress.

- Long and loose as in wearing an away-from-the-body jacket or coat. This is being touted as the most comfortable way to dress in years.

- Boxy over lean and long as in dressing in toppers (coats and jackets) over slim skirts.

Looking at what's ahead for autumn's fresh, cool breezes we are already hearing, "Boy, oh boy!"

Photos by David Frank and Gary Caskey

The fedora, vest and trouser, all inspired by menswear, are choices Cindy Vickery of Mt. Clemens has made for fall. The fully lined lambkin leather vest by Tintamin, \$320, grey leather pant by Liz Roberts, \$290, grey silk blouse, \$79, are from T. Edwards in Somerset Mall.



DISCOVER THE WORLD OF

**LARGE
SIZE
FASHIONS**

**We're Better
Than Ever!**

Sys Unlimited specializes in women's apparel sizes 12½-24½, 32-46, featuring the most complete line of clothing for the larger woman in the Michigan area.

Everything from lingerie to casual to evening wear with a fit and style that helps you look and feel your best...

Gift Certificates,
Layaways and
Alterations Available.

sys
UNLIMITED

I.B. DIFFUSION

28927 Southfield Rd.
Lathrup Village
Just S. of 12 Mile
(313) 424-8767

Daily 10-6/Thurs. 10-9
Saturday 10-5



for the sophisticated
woman... featuring
the new body
trends for fall.

bettina

Park West Plaza
29499 Northwestern Hwy.
Southfield
352-2530

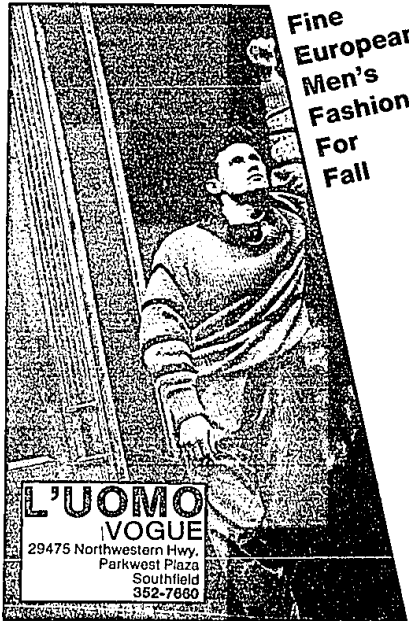


Yuki Brooks (left) of Birmingham shows a long painter smock, \$180, uneven hemmed cowled shirt, \$130, and soft pleated skirt in the longer length, \$140. Sarah Levine's black, ribbed, 100 percent cotton big coat by Todd Oldham for Congovid is \$160 at Ayie.

Fine
European
Men's
Fashions
For
Fall

**L'UOMO
VOGUE**

29475 Northwestern Hwy.
Parkwest Plaza
Southfield
352-7860



SOMERSET, TROY (313) 840-3840
MOUNT PLEASANT (313) 772-4078

**Léger's Unique Shop
for
Silks**



Teddy



Cami and tap pants

Léger's Lingerie

222 E. Maple • Birmingham • 642-3145
Personalized Service • Open till 9:00 Thurs.