

Fallingwater is tourists' mecca

A two-day architecture/art excursion is being planned by the Frank Lloyd Wright/Affleck House board of governors for Saturday and Sunday, Oct. 13-14.

The trip, limited to 40 persons on a first-come basis, will focus on one of Wright's most widely acclaimed masterpieces, Fallingwater on Bear Run in Fayette County, Pa.

The \$325 per person cost includes a \$25 contribution to the Affleck House restoration program, round-trip air fare, one night at the Pittsburgh Hilton Hotel, lunch, a dinner party at the famous Duquesne Club of Pittsburgh and land travel.

TRIP ORGANIZER, Lila Silverman of Southfield, member of the board of governors, said there will also be visits to museums and famous buildings.

For additional information or reservations, call 358-3138.

The Affleck House in Bloomfield Hills, was given to Lawrence Institute of Technology by the children or the original owners. It is presently undergoing restoration, financed by the fund-raising efforts of the Affleck House board of governors under Ivabell Harlan of Bloomfield Hills, chairman.

During the restoration, the house continues to be a center for workshops,

seminars, tours, and dinners.

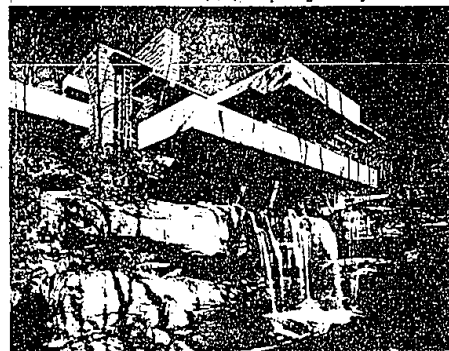
Two dinner/tour evenings for potential Friends of Frank Lloyd Wright Affleck House members will be held this fall, Tuesday, Sept. 25 and Tuesday, Oct. 23. For more information on these \$45 per couple evenings, call 358-3138.

FALLINGWATER juts directly over a waterfall at Bear Run, Pa. It was built for Mr. and Mrs. Edgar J. Kaufmann of Pittsburgh and completed in 1937.

Because of the complexity of the design, size and challenging topography, the house took several years to build. However, it incorporates some of Wright's most spectacular work. A guest house was added later.

Since its completion Fallingwater has received worldwide attention and has been the subject of many articles and publications. One book, "Frank Lloyd Wright's Fallingwater" by Donald Hoffmann, is completely devoted to the house.

The trip to Fallingwater and the Pittsburgh area is one of the many fund raisers which the Affleck House board of governors continues to plan. Other officers on the board are: William and Mary Palmer, vice chairman; Chester F. Mally, treasurer; Joyce Scott, recording secretary; and Lila Silverman, corresponding secretary.



Fallingwater on Bear Run in Fayette County, Pa., is one of architect Frank Lloyd Wright's most widely acclaimed masterpieces. Tourists can see the house during a trip Oct. 13-14 planned by the Frank Lloyd Wright/Affleck House board of governors.

A WABEEK SHOWPLACE!



Magnificent home built by Malcolm Leventon. Castle living 4 bedrooms with private baths. Solid oakwork, wet plaster and high ceilings. Much More! Gorgeous!

Price Reduced, \$425,000.

For private showing call SYLVIA STOTZKY REAL ESTATE ONE 644-4700 or 628-4258



At Scripps on the Lake, there's a large all-spaces lake... and a 927-acre park reserve with fantastic year-round recreation.

It's located in Orion Township, just 45 minutes from downtown Detroit on I-75.

Park homesites — with lake view and park back yard — start at \$19,900. Lakefront homesites range from \$62,900 to \$75,900.

See our Capaldi-built "Geneva" model honored by the Builder's Show.



Offered by COLDWELL BANKER/SCHOOLTZ REALTY
Hours: 1 to 6 P.M. daily, 11 A.M. to 5 P.M. weekends.
Telephone: (313) 391-1464.
Directions: Exit 83 off I-75 Expressway, North 3/4 mile on Joelyn Road. Left on Scripps Road.

BE PART OF THIS LEGEND.

IT'S APPEAL GOES FAR BEYOND IT'S PRICE.



Seldom has a new concept in luxury been so enthusiastically accepted even before its construction. Now, you are invited to view the completed models and judge for yourself.

PHASES 1 & 2 SOLD OUT.

A UNIQUE 2 & 3 BEDROOM CONDOMINIUM COMMUNITY IN WEST BLOOMFIELD PRICED FROM \$83,900

Interior Design by Perlmutter/Fretwald.



Models open daily 1 p.m. to 6 p.m.

MAPLE PLACE

MAPLE RD. 500 FT. WEST OF DRAKE

FOR INFORMATION CALL 598-7461/3050 • CLASSIC CONSTRUCTION CORPORATION



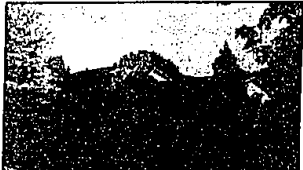
LUXURY SOUTHFIELD CONDO
• 3 bedrooms, 2 1/2 baths, large living room, dining area
• Family room w/ fireplace, roomy kitchen, all appliances
• Front unit has guest parking, lovely yard, private entrance
• Rear entrance thru garden with patio, sheltered parking
• \$80,000 640-8777



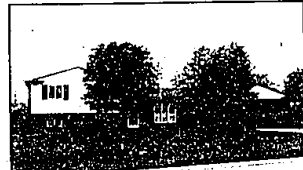
5701 BINGHAM, TROY
• North of Long Lake, East of John R
• Spacious 4 bedroom, 3 1/4 bath ranch
• Handsome living and family rooms
• First floor laundry, central air, finished full basement
• \$107,900 Stoneledge Sub 643-8500



HUNTINGTON WOODS
• Five bedroom, newer custom designed kitchen
• Family room with fireplace, hardwood floors
• Central air, superb craftsmanship and details throughout
• Over 2500 sq. ft. of Elegant Living
• \$124,000 557-8700



LAKE PRIVILEGES
• Sharp Colonial across from Golf Club
• Private family room with fireplace, den
• Formal dining room, 1st floor laundry
• Finished rec room, 2 1/2 baths, central air
• \$114,900 557-8700



BLOOMFIELD HILLS SCHOOLS
• Three bedrooms, den, 2 1/2 bath bi-level
• Fireplace in family room
• 2 car attached garage
• Large treed lot, Lovely Fox Hill subdivision
• \$76,500 JUST REDUCED! 643-8500



BIRMINGHAM COLONIAL
• Split level colonial with 3 bedrooms, 1 1/2 baths
• Large living room with fireplace, separate dining room
• Library, family room, kitchen with breakfast area
• Large private lot with garden house
• \$117,000 540-8777



5918 BLANDFORD, BLOOMFIELD TOWNSHIP
• East of Telegraph and South of Quenton
• 3 bedroom ranch, 2 1/2 baths, Florida room, fireplace
• Large lot, park-like setting
• Nice condition. Great land contract terms
• \$107,500 851-2303



CLASSIC ELEGANCE-HUNTINGTON WOODS
• Possible natural fireplace
• Master bedroom with bath and dressing room
• Modern kitchen cabinetry with pull-out features
• Burglar alarm, sprinkler system
• \$109,500 547-2000



23358 DERBY LANE, FARMINGTON HILLS
• South of 10 Mile and West of Inkster Road
• Unique beautifully decorated 2 story Cape Cod
• 2 fireplaces, 1st floor master with bath, 2 family rooms
• 3 1/4 car garage. Beautiful landscaped courtyard
• \$128,000 851-2303



IMMEDIATE OCCUPANCY
• Choice area of Birmingham, Cape Cod with 4 bedrooms
• 1 1/2 baths, formal dining room, fireplace in living room
• Professionally landscaped yard with privacy fence
• Land contract available, make offer!
• \$79,900 540-8777



BIRMINGHAM SCHOOLS
• Lovely 4 bedroom, 2 1/4 bath bi-level
• Family room with fireplace, mint, move-in condition
• Decorated in neutral tones, professionally landscaped
• Land contract terms with immediate occupancy
• \$79,900 643-8500



BEAUTIFUL BIRMINGHAM RANCH
• Decorator perfect with gorgeous yard
• Separate dining room has a built-in china cabinet
• Updated kitchen with eating space and new counters
• 3 bedrooms, 2 full baths, large screened porch
• \$79,500 540-8777

SOUTHFIELD/LATHRUP
557-6700

BIRMINGHAM
540-6777

ROYAL OAK
547-2000

WEST BLOOMFIELD
851-2303

ROCHESTER
851-3330

BLOOMFIELD
547-8780

TOY
849-8500

SALE POSITIONS AVAILABLE...CALL TODAY