

# New Look With Grid Ceilings

The modern way to cover old ceilings is with smart grid ceilings.

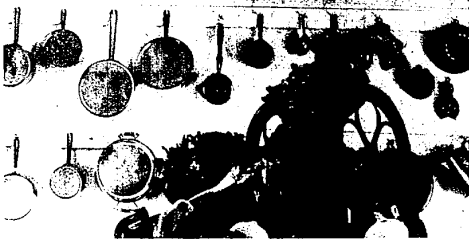
Designed to be hung in any room in the house, they are lower old-fashioned high ceilings. They can hide unsightly ducts and pipes protruding from basement and attic ceilings - yet still keep them accessible.

Lower ceilings can mean lower heating and air conditioning costs, too!

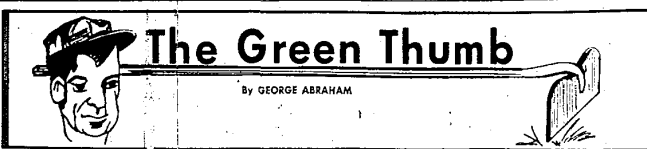
Basements become lighter with grid ceiling luminous panels backed by fluorescent lights. Kitchens are delightful with easy-to-clean plastic-coated panels.

A handyman can "lay in" large panels with a ceiling grid suspended at any level you wish. Available in many panel styles, including decorator, acoustical and 3-D panels, luminous and vented panels, and factory-finished white or wood-grained grid components.

Installations? Just hand up the grid. Then drop in the panels. Your grid ceiling can be a weekend away.



KITCHENS ARE cleaner and brighter with plastic-coated grid ceiling and luminous panels beneath fluorescent lamps.



By GEORGE ABRAHAM

Why roses change colors? One of the most baffling things to happen to gardeners is to have their roses change colors.

What's the reason for this? Actually, roses do NOT change colors. What happens is this: Roses are budded on to an understock which is vigorous.

During bad winters the top part of the rose dies back, leaving the understock to take over. Usually the blossoms which come up are a deep blood red color because the understock is one known as Doctor Huey, and most roses today are produced on this understock. Doctor Huey is a old climbing rose, producing one crop of rich-red flowers.

Roses grown in California (most of our roses in U.S. are produced in that state) are mainly grown on Doctor Huey

understock. Those raised in Texas are produced on multiflora understock.

IF YOU'R roses changed colors and produced a large crop of white "apple blossoms" it means that the cultivated portion (top part) died out and the multiflora understock came up. Multiflora produces large arching canes and foliage is a bit rough, often light green.

It's the same rose you see in the so-called Rosa multiflora hedge farms grow, and which is advertised as being "horse-high, hog-tight and bull-strong."

Nothing can be done to make the roses change back to the original colors. Your best bet is to dig up the wild growth and replace the plants in spring, if you don't like the understock's blossoms.

uniform supply of moisture at all times. If you let the soil get dry the plants become leggy, hardened and go to seed fast.

They develop that "herring-bone" look when allowed to go dry.

If your plants are leggy, cut them back about half and this will force new growth bearing blossoms.

GREEN THUMB CLINIC: A reader writes: "Our tomato plants have leaves which have stretched out and become lacy. Is this normal?"

Answer: Quite often tomatoes will develop a condition known as shoestring disease. Leaves are stretched out and sickly looking.

Don't worry if your healthy plants develop leaf roll or leaf curl. This happens often, especially if the soil is dry or if a rain falls after the plants have been growing in a dry soil for some time. Leaf curl appears

after you cultivate around plants.

Usually the plants will straighten out after you apply water. Fruits from plants with curled leaves is not affected.

## Snow Mosquito Tops Pest List

Tiny thread-like worms could soon be used to control the snow mosquito - a serious woodland pest in Michigan.

These nematodes, as they are called, are natural parasites of the mosquito.

In nature the host and parasite live in a balanced state.

Michigan State University scientists hope to tip this balance in favor of the nematodes, thus removing the snow mosquito from Michigan's major insect pest list.

**CREOSOTED EDGING TIES**

4" x 4" x 8' \$2.25  
4" x 6" x 8' SPECIAL \$3.00  
6" x 8" x 8' \$5.75

"2 STORES"

**LIVONIA** 27700 SEVEN MILE KE 1-1733  
**WESTLAND** 512 S. NEWBURGH PA 1-1733

**BUSHEL STOP**

## A Boy's Room Of His Own At A Reasonable Price

Like a plant, a child develops best in pleasant surroundings.

"Make a special effort to dress and furnish the room to be attractive, child-proof and easy to take care of," suggests Norma Brown, homemaking

consultant to Masonite Corporation.

"Parents also will want to make the best possible use of space, as this is a scarce commodity in many homes."

Style and simplicity mark the design of the room (pictured) for a young boy.

The designer began with boy-proof walls of a textured, prefinished hardboard, Marbione. The cream and gray wall color complements the other elements.

### Kill COCKROACHES

Easily and Cheaply. Free circular describes no DDT product. Sure Kill.

6566 State Rd.  
Millington, Mich. 48744

board gently reminds him of school.

A large clock encourages him to tell time, and the well-lighted desk makes homework a bit easier.

A wall to wall carpet in neutral shade helps keep down the noise level.

This room could well be the guide for young fathers anxious to give "junior" a comfortable, attractive room of his own at a reasonable cost.

ANOTHER idea is to line a closet and the inside of the closet door with Peg-Board to augment storage capacity. Fixtures that tie into many performances are ideal for hanging shoes, neckties and other items.

Bunk beds can be built in the home shop or purchased for further space economy.



DO-IT-YOURSELF PROJECT — This room for a young boy could be a guide for young fathers anxious to give "junior" a comfortable, attractive room of his own at a reasonable cost.

## Plants Benefit Man

EAST LANSING Beautiful gardens and ornamental plantings provide both physical and psychological benefits for man, points out a Michigan State University horticulturist.

From tulip bloom until the roses are frosted, the horticultural garden is the most popular place on Michigan State's campus for strolling, reading and relaxing, say Dr. John Carew.

"But there are not enough

gardens, parks and ornamental plantings for all the people in this country," he says. "Too many people never get the opportunity to enjoy the plants."

Scientists know our minimum daily requirement (MDR) for vitamins and minerals but no one knows our MDR for plants and natural beauty.

PLANTS YIELD many benefits to man, Carew says. He lists:

fences or can be used to hide undesirable sights such as junkyards, dumps or used car lots.

6) Air conditioning. The water that evaporates from plants' leaves can cool air as much as 15 to 20 degrees. In a recent test, air temperature above synthetic turf at Michigan State University's Spartan Stadium was 93 degrees but only 85 degrees above nearby natural grass-covered areas. Home owners who use green concrete or plastic to replace lawns soon realize they may have an outdoor area too hot to enjoy.

7) Better soil. Plants help keep soil porous and absorbent so that it soaks up rain. A one-inch rainfall on a 30-acre paved parking lot produces over 600,000 gallons of runoff water. Areas of ornamental plants in these parking lots would help to absorb this water and avoid excessive runoff.

## QUALITY MILLWORK \$SAVING PRICES

**ALUMINUM Combination Doors PRE-HUNG**

Deluxe Mill Finish #225  
2-6x6-8-1 1/8" 24.95 EA.  
2-8x6-8-1 1/8" 24.95 EA.  
3-0x6-8-1 1/8" 24.95 EA.

Deluxe White Finish #225  
2-6x6-8-1 1/8" 29.95 EA.  
2-8x6-8-1 1/8" 29.95 EA.  
3-0x6-8-1 1/8" 29.95 EA.

Our Most Popular White W-76 Crossbuck  
2-8x6-8-1 1/8" 39.95 EA.  
3-0x6-8-1 1/8" 39.95 EA.

Standard Mill Finish #500  
2-8x6-8-1 1/8" 21.95 EA.  
3-0x6-8-1 1/8" 21.95 EA.

W-76

**BI-FOLD DOORS**

REDFORD — The Leader in Quality Millwork and at the LOWEST PRICES EVER!

LAUAN  
2-6"x6-8" 11.55  
4-0"x6-8" 19.60

LOUVRE  
2-6"x6-8" 16.85  
4-0"x6-8" 31.10

BIRCH  
2-6"x6-8" 13.60  
4-0"x6-8" 23.40

MANY MORE SIZES IN STOCK

**ALUMINUM SIDING**

• Fully Guaranteed  
• No Painting  
• No Rusting  
• No Chip or Peel  
• Made from Reynolds Aluminum

Less Backer With Backer  
25.95 29.95  
100 sq. ft. 100 sq. ft.

Self-Seal 2.97  
240 lb. BDL.

79.99 Square  
Square — 100 Sq. Ft.

**POPULAR FRONT ENTRANCE DOORS**

No. 612  
• 9-Lite  
• 3/0 Wide  
• Always Popular  
• Cross Buck Entrance  
32.95

No. 301  
• 14-Lite  
• 3/0 Wide  
• Beautiful Birch Veneer  
28.95

**POPULAR SIDE ENTRANCE DOORS**

No. 549  
SASH DOOR  
2/6 Wide  
1 3/8" Thick  
17.50

No. 220  
• 14-Lite  
• 20x24  
• Grade Door  
• 2/8 Wide  
• Birch Veneer  
24.75

**DEXTER DOOR HARDWARE**

Key-In-Knob . . . 6.59 ea.  
Passage . . . 2.89 ea.  
BATH . . . 3.69 ea.

Privacy Bedroom 3.59 ea.  
Dummy Knob . . . 1.29 ea.  
Bulls. 3 1/2 x 3 1/2 Brass . 49 pr.

**INTERIOR FLUSH DOORS — 1 3/8" thick 6 7/8" high**

MAHOGANY

1/4 or 1/6 . . . 7.95 1/4 or 1/6 . . . 5.80  
1/8 . . . 7.95 1/8 . . . 5.80  
1/10 or 2/10 . . . 8.45 1/10 or 2/10 . . . 5.90  
2/2, 2/4 or 2/6 . . . 9.45 2/2, 2/4 or 2/6 . . . 6.30  
2/8 . . . 10.15 2/8 . . . 6.80  
3/0 . . . 10.80 3/0 . . . 7.30

**DORIC #700 SERIES**

REDFORD PRICE BOOK SPECIAL

**PATIO DOORS**

• 4'-0" x 7'-0"  
• 5/8" Insulated Glass  
• 100% Aluminum  
• Reversible  
• Screens Extra

116.95

3'0" Screen . . . 14.50  
5/8" Temp Insulated glass . . . 6/0x7'-0" \$157.50

**SALE SHAG CARPET TILE**

8-1/2" Rubber Back  
59¢ Ea.

Other Spectacular Bargains

VINYL ASBESTOS  
1,000 Tiles \$3.99

KITCHEN CARPET  
2' x 2' Tiles \$2.99

9900 TELEGRAPH  
215-2225

## THE FAMILY THAT PLAYS TOGETHER STAYS TOGETHER



**AQUA STAR POOLS**

America's Finest, On-Ground Pool ALL NECESSARY ACCESSORIES INCLUDED

The only pool completely installed, including electrical. Never requires painting - aluminum siding - all pure redwood fencing, pre-stained, and beveled with walk around deck, covered 6 foot pool, 4 1/2" heavy gauge aluminum coping. Standard on all 12 sizes from which to choose. Save money - enjoy year around fun - swim and skate on the strongest and most beautiful pool model. You furnish only the water!

**AVOID POLLUTION -- TRAFFIC HAZARDS -- CROWDED BEACHES**

YOU WILL KNOW WHERE YOUR CHILDREN ARE WHEN YOU OWN AN AQUA STAR

ENJOY HEALTHY FAMILY FUN WITH YOUR OWN PRIVATE RECREATION CENTER

**SEE OUR DISPLAY AT 28875 JOY ROAD, WESTLAND**

2 Blocks East of Midland

**REDFORD CASHWAY LUMBER**

ROYAL OAK 548-2153  
103 SOUTH MAIN  
Corner of Lincoln

LIVONIA 261-5110  
11970 FARMINGTON ROAD  
Between Schoolcraft and Plymouth

WARREN 775-7000  
24620 SCHOENHEER ROAD  
Just South of 10 Mile Road

**PHONE 425-8830**

**BANK TERMS AVAILABLE**