

OPEN SUNDAY 2-5



NEWER COLONIAL

Built in 1979. Owner has done an exceptional job of maintaining this lovely home. Four bedrooms, 2½ baths, family room with fireplace, full basement, central air, sprinkler system. 29400 Parkside, S. of 13 Mile, W. of Farmington. \$174,500.



BEAUTIFUL CONTEMPORARY HOME

In prestigious Wakefield Forest. Living room offers a beautiful marble fireplace, media room for all your gadgets plus a huge family room with fireplace. Master suite offers studio ceilings, his and hers walk-in closets and Jacuzzi in the private bath. Custom formica cabinets, recessed lighting and energy efficiency package. \$395,000. BIY-68474



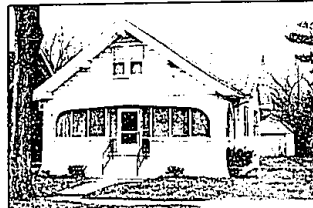
NEW HOME!

Builders former model has everything-four bedrooms, 2 full baths plus an oversized powder room, family room with full wall fireplace in addition to a private library, completely landscaped, large deck, central air, neutral decor throughout and immediate occupancy. Newly listed with Farmington Hills Schools! \$183,500. GLE-67066



RIGHT IN TOWN

Totally charming 4 bedroom home with 2 full baths plus a powder room, family room, den, garden room and a 2 car garage. Jenn-air range, 2 fireplaces and Farmington Schools! Newly listed at \$117,900. MAB-66612



WALK TO BIRMINGHAM

Charming older home in-town Birmingham. Beautifully maintained and freshly decorated. Large kitchen with oak cabinets, hardwood floors, new skylite. Gas forced air heat and central air. \$90,000. PAK-67084



SHARP HOME

With a contemporary flair. Open floor plan offering cathedral ceilings, three bedrooms, fireplace family room, central air, private patio-all sparkling clean. Energy efficient home! Newly listed at \$79,900. BRL-66907



MOVE RIGHT IN

Beautifully maintained and ready for new owners. This 4 bedroom Bloomfield Township Colonial has a lovely family room with 2 doorwalls, a library, hardwood floors, wood windows and a new roof. \$133,000. PEE-67083



MAGNIFICENT BLOOMFIELD RESIDENCE

Beautifully maintained and located in a prime area. The gourmet kitchen is equipped with newer top of the line appliances, spacious family room features a wet bar with cabinets, fireplace and overlooks the tennis court. Formal living room has bay window and a fireplace. HAL-59724

RALPH MANUEL

ASSOCIATES, INC. • REALTORS

1821 W. Maple, Birmingham

647-7100

Ralph Manuel Associates - West, Inc.

32930 Middlebelt, Farmington Hills

851-6900

Toll Free 1-800-R-MANUEL



MEMBER OF TRANSLO RELOCATION SERVICE
OFFERING COMPUTERIZED MULTI-LIST SERVICES



VISIT OUR OPEN HOUSES

BLOOMFIELD HILLS SCHOOLS

Delightful, well constructed and maintained Tri-level offering 4 bedrooms, 2½ baths, family room and library. Situated on a premium lot. \$114,500. Open Sunday 1-4. 6780 Spruce Drive, S. of Maple and W. of Telegraph.

CRANBROOK VILLAGE

Very sharp contemporary ranch offering new kitchen and bathroom, finished basement includes washer, dryer and refrigerator. Just redecorated. \$68,500. Open Sunday 2-5. 29863 Spring Hill, N. of 12 Mile and W. of Southfield.

BLOOMFIELD VILLAGE OFFERING

This dynamic home features extensive updating-newer kitchen, delightful family room with antique fireplace, fantastic upper level with skylites and roman whirlpool tub. Double lot. \$224,900. Open Sunday 1-4:30. 436 Glengarry, N. of Maple and E. of Lahser.

CONTEMPORARY ON A POND

Made for entertaining, beautiful view, cathedral ceilings, extensive use of oak, Jacuzzi, 3 bedrooms, 2½ baths and walk-out lower level. \$228,900. Open Saturday & Sunday 1-5. 6625 Castlebury, S. of Maple, W. of Halstead.

FANTASTIC FARMINGTON SETTING

This brick ranch features ravine lot and breathtaking views. Total charm inside. Totally updated in today's fashion plus central air and fireplace for year round comfort. \$87,500. Open Sunday 1-4:30. 26314 Pillsbury, N. of 11 Mile and E. of Farmington Road.

ABUNDANT LIVING SPACE

In this clean tastefully decorated ranch offering 3 bedrooms, large living room, family room with fireplace plus a 10x24 heated play room. Farmington Hills location. \$52,900. Open Sunday 1-4. 32241 Old Forge, N. of 12 Mile and W. of Orchard Lake.



FOX HILLS COLONIAL

Beautiful Nantucket model offering 4 bedrooms, 2½ baths, family room with doorwall leading to a private deck and patio. Swim and tennis club available. Immediate occupancy. \$117,900. WEE-66882



TENNIS AND SWIM CLUB

Right down the street from this well maintained family home. Features include 4 bedrooms, 2½ baths, family room with cozy fireplace plus living and dining rooms. Bloomfield Hills Schools, close to shopping and I-75 access. \$84,700. SPL-66826.



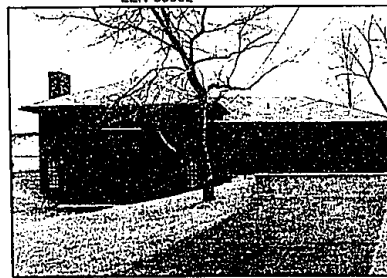
GUL-DE-SAC LOCATION

Great family home offering 4 bedrooms, 2½ baths, family room with fireplace, formal dining room, stained woodwork, sprinkler system, central air and attic fan and 2 doorwalls leading to a wood 2 tier deck. \$118,500. STN-66866



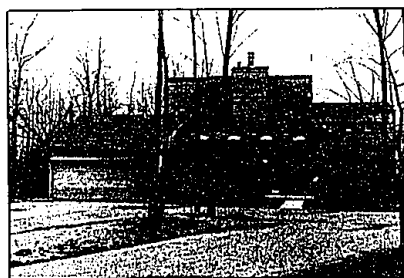
GREAT SOUTHFIELD NEIGHBORHOOD

Excellent home for a young family or empty nesters. Finished basement, beautifully done recreation room with ½ bath. Brick ranch, treed lot and high assumable mortgage can be assumed with bank approval. \$54,500. LEN-66902



STUNNING WATERFRONT RANCH

Graceful floor plan and decor boasts 3 bedrooms, 3 baths, 2 master suites-one with wet saunas and one with fireplace facing waterside. Great room with fireplace and tinted windows across the entire waterfront side of home. Priced to sell at \$154,900. COE-67040



BEAUTIFUL BIRMINGHAM SETTING

White St. Charles kitchen with Thermotronic II ovens and microwave, Jenn-air range, sub-zero refrigerator/freezer, pantry, skylites, flat tub and showers, corian tops and bidet. Marble slits and levers throughout. Special financing available! \$194,900. POO-47133