

Chamber players deserve attention

By Ruth Zarom
special writer

Boris Berman, soloist at last week's Renaissance Chamber Players concert, graduated with distinction from the Moscow Tchaikovsky Conservatory as both a pianist and a harpsichordist. He immigrated to Israel and there created one of the country's most successful concert series, "Music Spectrum."

He is on staff at Yale University and will present "Music Spectrum" in New York City under the auspices of Yale University this year. Berman appeared with the Detroit Symphony Orchestra at the Meadow Brook Festival two years ago.

Berman performed Bach's Concerto in D minor in a style that wasn't as strict in its interpretation as some purists might prefer. Yet, it wasn't a radical stylistic departure that lost the feeling of Bach.

THERE WAS more legato in his playing than more strict phrasing would warrant, but he used the pedal sparingly, retaining a great deal of crispness.

His overall technique and feeling for the rhythmic nuances were excellent. He was always in tune with the Chamber Players, entering right on cue and blending with the playing of the group to perfection.

In many places in the first movement, he blended with the others rather than playing over them. His interpretation of the second part was impressive where he let the piano stand out with the delicate melody creating a contrast with the playing of the strings.

IN MOZART'S Piano Concerto No. 8 in C, the interpretation of the first part was most impressive. Berman gave it a rolling style.

Rameau's Sixieme Concert, "La Poule," has been immortalized by Respighi in his suite "The Birds," which uses the first movement of the Rameau work. This performance had grace and insight.

Haydn's Symphony No. 57 in D, was the last piece of the evening. The second part of the concerto had its own

alarm system to wake everyone up. First, one of the horns was off-key, then Maria Smith broke a G string and somebody else's music dropped. Rachevsky aptly called a minute break to fix matters.

This program had more quality to it and a substantially higher standard than many of the others this season. With three to go, it is hoped that this is

review

a turning point in the downward attendance trend. By all indications, these final programs should prove worthy of a better response.

DINE OUT TONIGHT



In the Hills of West Bloomfield

The MANOR HOMES at Aldingbrooke

For purchase



2 and 3 bedroom detached condominium homes of extraordinary quality and character.

Aldingbrooke is a private estate-like community situated on over 130 spectacular acres of pond, trees and rolling hills. Entry is off Drake Road, between Maple and Walnut Lake Roads, through the 24 hour monitored gatehouse.

The Manor Homes at Aldingbrooke are open for your inspection daily from 12 to 6 pm.

Priced from \$134,900.

LIMITED NUMBER OF
SITES REMAINING

661-1750

broker participation invited.

WORTH WAITING FOR.



North Park Square has big beautiful apartments... all occupied. We can add your name to our waiting list. And like all good things, it's worth the wait.

2 and 3 bedroom very luxurious garden apartments from \$640

Phone: 424-8177

NORTH PARK SQUARE

Managed by Sullivan Smith, Inc.

Harbor Springs is not a five hour drive!

PORT COVE CONDOMINIUMS INSISTS.

Northern Michigan is only minutes away...on the north shore of Cass Lake. You'll swim, sail, walk along your beach...all the activities of a perfect retreat, everyday...at PORT COVE.

WE DARE YOU TO LEAVE THE RAT RACE. Step into our backyards...you'll find the relaxation you thought you had to wait for. You work hard for a living. Now live a quality life. We know it's not how hard you play...it's how much fun you have while playing.

OBEY THE LAWS OF NATURE.

Wake up to the scent of a fresh breeze and the crackle of a wave as the sun ignites your private lake. But try not to make too much noise. You might disturb the morning choir perched outside your window.

LUXURY ISN'T JUST A BATHTUB

After a long day on your feet, it's a two-bedroom/ two bathroom condominium opening onto your balcony. It's deluxe appliances, full carpeting, and individually metered gas and electric. But most importantly, it's the flame of passion rising from your personal fireplace.

WARM YOUR BONES IN WINTER.

Each Port Cove condominium has energy efficient insulation combined with triple-insulated windows. A blend of brick and care-free siding creates an attractive home for both your pride and your pleasure.

PORT COVE CONDOMINIUMS

...the vacation you never have to leave to go home

\$79,900 to \$124,900

Model: 681-8155

Hours: Daily and Sunday

1-6 pm or by appointment

Closed Thursday

Developer:

J&J
Shuttle



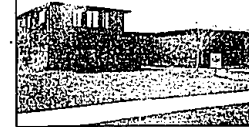
ADAMS/BIG BEAVER AREA - Birmingham schools add to the appearance of this youthful ranch in wooded setting. Three bedroom, master bath, family room, dock, central air. Neutral decor. \$99,900.
EXR/BIRMINGHAM 645-5800



BEST BUY IN TOWN. Bloomfield Hills. 4 bedrooms, 2 full baths, family room with fireplace, screened porch, large private yard, 2 car garage. Super location. \$84,900 BR. Call for details.
EXR/W. BLOOMFIELD 855-9100



CHARM & CHARACTER THRU-OUT FARMINGTON. Huge 4 bedroom brick colonial offers dramatic formal dining room, family room with fireplace, library with cathedral ceiling and skylight, 1st floor utility, attached garage, whirlpool, natural wood trim, stained glass windows and much more. Asking \$159,900.
EARL KEIM REALTY MIDWEST, INC. 477-0880



GREET SPRING in this beautifully decorated 4 bedroom, 2 1/2 bath Quad, 2,400 sq. ft. Features dining room, family room with fireplace and 1st floor laundry. Breakfast area. Stunning wood dock in back. Hike and her garage. All of this and much more for only \$93,900.
EXR/TROY 689-3600



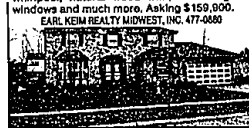
"DON'T FENCE ME IN" On this 1/2 acre, lovely three bedroom ranch. Siting arrangement and barbeque on Walmatland deck overlooking several delicious fruit trees. Lovely Franklin Village. \$97,500 TU
EXR/MAPLE 642-6500



BLOOMFIELD HILLS \$132,900. In Riverside Meadows - Spacious 4-5 bedroom, 3 bath quad on private court. Country kitchen has built-ins and lots of cupboard space. 2 fireplaces, large family room, 2 1/2 car garage and basement. Birmingham schools and more. Fast possession. Owners have purchased new home.
EXR/BIRMINGHAM 645-5800



QUALITY AND PERFECTION in this 4 bedroom, 3 1/2 bath home. Wooded lot surrounds deck and hot tub. Loaded glass doors, oak kitchen floor, stone fireplace, wine cellar, Alarm and sprinkler system. Offered at \$289,000 FI.
EXR/W. BLOOMFIELD 855-9100



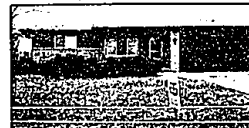
EXECUTIVE ELEGANCE. N. LYONIA. Turn-out this absolutely stunning 4 bedroom, 2 1/2 bath brick colonial. Ceramic foyer, circular stairway, library, family room with fireplace, formal dining room, gourmet kitchen, huge master suite with garden tub, sauna and beautiful decor. Priced to sell now at \$127,500.
EARL KEIM REALTY MIDWEST, INC. 477-0880



TROY COLONIAL CONDO! Immediate possession available on this classy 3 bedroom, 2 bath Troy Condo with corner fireplace in living room colonial. Family room with fireplace, huge country kitchen, basement, attached garage, central air and much more. Assumable mortgage. Anxious owners have new home and have priced to sell yesterday at only \$89,900.
EXR/TROY 689-3600



GREAT FAMILY SUB. FARMINGTON HILLS. Surrounds this beautifully decorated 3 bedroom colonial. Family room with fireplace, huge country kitchen, basement, attached garage, central air and much more. Assumable mortgage. Anxious owners have new home and have priced to sell yesterday at only \$89,900.
KEIM KEIM REALTY MIDWEST, INC. 477-0880



COMPARE OUR QUALITY, VALUE. Appealing Cranbrook Village Ranch. Fireplace family room, large dock, 3 bedrooms, 1 1/2 baths, 2 car attached garage and basement. Area of more expensive homes. \$69,900.
EXR/BIRMINGHAM 645-5800



QUIET AND PEACEFUL. Fabulous 4 bedroom. Large family room, country kitchen. Large master suite. Central air, fireplace. Wood deck backs to trees and rolling hills. Much more - call for details. Just listed at \$157,000 FO.
EXR/W. BLOOMFIELD 855-9100



FABULOUS FARMINGTON RANCH. Charming and Open describes this wonderful Farmington home. 4 bedrooms, 2 1/2 baths, ceramic kitchen, finished lower level and attic fan plus a great deck, wonderful backyard and a 2 1/2 car heated garage. \$59,900 SH
EXR/MAPLE 642-6500



SIMPLE ASSUMPTION! Troy 3 bedroom Quad offer formal dining room, built-ins, bookshelves in family room with fireplace, central air and 1st floor laundry. Sprinkler system, patio with gas barbeque in fenced backyard. Call today for extra features. \$96,900.
EXR/TROY 689-3600



COUNTRY/CITY LIVING. Great family home overlooking a pond/Commodore Park. Golf, tennis, swimming available. Neutral decor - wet bar in family room, fireplace. Move in condition - a must see. \$A \$112,900.
EXR/MAPLE 642-6500



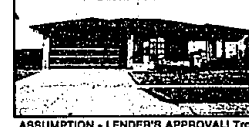
LIVE IN A GREAT FAMILY NEIGHBORHOOD when you own this 4 bedroom, 2 1/2 bath colonial with family room, manicured yard, zoned sprinkler system. Walk to new elementary school. Call for all the fine amenities. \$103,900.
EXR/BIRMINGHAM 645-5800



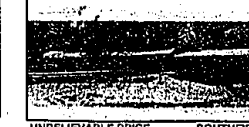
SUMPTUOUS CONTEMPORARY. 3 full living levels, 5 bedrooms, 5 1/2 baths, 2 full rooms with fireplace, private office plus library, wet bar decks, closets galore. Magnificent double lot with trees, ravine and 2 streams. Asking \$379,900 FI.
EXR/W. BLOOMFIELD 855-9100



SHARP WATERFRONT HOME. Some of the finer points are the neutral decor, hardwood floors, new Jacuzzi, the landscaped yard, Bloomfield Hills schools, all-sports, upper Long Lake and much more. \$A \$229,000.
EXR/MAPLE, INC. 642-6500



ASSUMPTION - LENDER'S APPROVAL! Troy 3 bedroom, 2 1/2 bath Brick Ranch features beamed ceiling family room with natural fireplace, breakfast area and 1st floor laundry. Sharp interior. Underground sprinkler system, fenced in backyard with patio. Quick Possession for only \$89,900.
EXR/TROY 689-3600



UNBELIEVABLE PRICE. SOUTHWEST. Spacious 3 bedroom colonial offers family room, beautifully finished recreation room, gourmet kitchen with Jenn-Aire stove and lots of extras. Move in condition in terrific family location. An unbelievable price at only \$82,900.
EARL KEIM REALTY MIDWEST, INC. 477-0880



BIRMINGHAM
OFFICE
1955 S. Woodward Ave.
645-5800

WEST BLOOMFIELD
OFFICE
5635 W. Maple Road
855-9100

MAPLE
OFFICE
3605 W. Maple at Lahrer
642-6500

TROY
OFFICE
1931 E. Wattle
689-3600

FARMINGTON
OFFICE
31715 Grand River
477-0880

