

## exhibitions

### ● CANTOR/LEMBERG GALLERY

Thursday, May 2 — New paintings by Steven Sorman are on display through May 25. Reception to meet the artist 6-8 p.m. Thursday. Hours are 11 a.m. to 5 p.m. Tuesday-Saturday, 538 N. Woodward, Birmingham.

### ● FARMINGTON COMMUNITY CENTER

Friday, May 3 — "Calligraphic Images" continues through Sunday. This is the sixth annual exhibition by the Michigan Association of Calligraphers. Hours are 7-10 p.m. Friday, 9 a.m. to 9 p.m. Saturday and 9 a.m. to 5 p.m. Sunday, 23765 Farmington Road, Farmington.

### ● I. IRVING FELDMAN GALLERIES

Kite paintings, paintings on canvas, acrylics on paper, watercolors and graphics by Richard Smith continues through June. Reception to meet the artist 7-9 p.m. Friday. Hours are 10 a.m. to 5 p.m. Monday-Saturday, until 8 p.m. Thursday, 6917 Orchard Lake, West Bloomfield.

### ● ARNOLD KLEIN GALLERY

Friday, May 3 — Recent drawings by Karen Anne Klein will be on display through May. Reception to meet the artist 7-9 p.m. Friday. Hours are 11 a.m. to 5:30 p.m. Tuesday-Saturday, 4520 N. Woodward, Royal Oak.

### ● PRINT GALLERY

Friday, May 3 — "Art and the Law" features works by Michael Smith and Janet Anderson along with artists from West Publishing Co. and illustrations of

"Spy." Lecture demonstration by Joyce Moore of Detroit Institute of Arts at 8 p.m. Friday. Reception is 7-10 p.m. Friday. Hours are 10 a.m. to 6 p.m. Monday-Saturday, until 9 p.m. Thursday, 29203 Northwestern, Southfield.

### ● CRANBROOK ACADEMY OF ART MUSEUM

Friday, May 3 — Work of graduating students in architecture, fiber, design, ceramics and sculpture will be on display to May 12. Hours are 1-5 p.m. Tuesday-Sunday, 500 Lone Pine, Bloomfield Hills.

### ● SOMERSET MALL

Friday, May 3 — "Fifteenth Annual Somerset Invitational" features works in all media by many of today's brightest stars in their fields from jewelry and glass to painting and wearable art of all kinds. Hours are 10 a.m. to 9 p.m. Friday, 10 a.m. to 6 p.m. Saturday and noon to 5 p.m. Sunday, Coldridge and Big Beaver, Troy.

### ● PEWABIC POTTERY

Friday, May 3 — Works by Bill Daley in the pottery and Paul Sires in the sculpture court. Opening reception 6-9 p.m. Friday. Daley will give a slide lecture at 8 p.m. Friday and a workshop Saturday and Sunday. Hours are 10 a.m. to 5 p.m. Monday-Saturday, 10125 E. Jefferson, Detroit.

### ● ROBERT L. KIDD ASSOCIATES

Saturday, May 4 — "Impressions Europe," paintings by George Kozmon and canvas constructions by Kim Strommen, continues through June 5.

Reception to meet the artists 3-6 p.m. Saturday. Hours are 10:30 a.m. to 5:30 p.m. Tuesday-Saturday, 107 Townsend, Birmingham.

### ● XOCCHIPILLI GALLERY

Saturday, May 4 — New impressionistic oil paintings by Don Wynn are on display through May. He's showing portraits, interiors and landscapes. Reception to meet the artist 2-5 p.m. Saturday. Hours are 11 a.m. to 5 p.m. Tuesday-Saturday, 568 N. Woodward, Birmingham.

### ● PAINT CREEK CENTER FOR THE ARTS

Saturday, May 4 — "Photo Images '85" continues through May 25. Reception 6-8 p.m. Saturday. Hours are 10 a.m. to 5 p.m. Tuesday-Saturday, 407 Pine, Rochester.

### ● HOOSIERMAN GALLERY

Saturday, May 4 — "FOR THE BRIDE AND GROOM II: An Alternative to the Toaster Oven," continues through May. Hours are 10:30 a.m. to 5 p.m. Tuesday-Saturday, 155 S. Bates, Birmingham.

### ● CHARLES WARREN & CO.

Saturday, May 4 — Sharon Mayer, jeweler, originally from Troy, will

have a display of her elegant necklaces at the store at Somerset Saturday and Sunday. She'll be there 9 a.m. to 3 p.m. Saturday and Sunday noon to 3 p.m., Somerset Mall, Big Beaver and Coldridge, Troy.

### ● DETROIT INSTITUTE OF ARTS

Tuesday, May 7 — "Arts and Flowers," salutes the museum's 100th birthday with four days packed with events relating to the culture and beauty of flowers. Opens with a 6-9 p.m. preview Tuesday, by ticket only. There are two lectures/demonstrations and a luncheon/fashion show each day and the museum should be literally blooming with live flowers in hundreds of arrangements, 5200 Woodward, Detroit.

### ● PHYLLIS KRAUSE GALLERY LTD.

Thursday, May 9 — Unique art objects, many not seen in this country before are on display, 29 W. Lawrence, Pontiac.

### ● GALLERY BIRMINGHAM

Sculpture selections of paintings, sculpture and graphics by local and international artists continues through

May 16, 223 S. Woodward, Birmingham.

### ● COUNTY GALLERIA

Drawings and paintings by Jean Harding Brown and sculpture and paintings by Jean Sreen are on display through June 14. Opening reception 5-7 p.m. Friday. The gallery is in the Executive Office Building, 1209 N. Telegraph, Pontiac.

### ● ANCIENT ART INTERNATIONAL GALLERY

Antiquities including pottery, jewelry, coins and bronzes from ancient Mediterranean cultures — hours 11 a.m. to 5:30 p.m. Tuesday-Saturday, 135 E. Maple, Birmingham.

### ● PARK WEST GALLERIES

"Erte, the Editor's Collection," many never-before-seen works, continues. Regular hours are 10 a.m. to 8 p.m. Monday-Wednesday, Thursday and Friday until 9 p.m. Saturday, until 5 p.m. Open Sunday noon to 5 p.m., 29469 Northwestern, Southfield.

### ● DETROIT ARTISTS MARKET

Traveling exhibition of works by Michigan artists continues through May 24, 1452 Randolph, Detroit.

### ● RUBINER GALLERY

Recent watercolor by Marjorie Hecst Simon continues through May 24. Hours are 10 a.m. to 5:30 p.m. Tuesday-Friday, until 5 p.m. Saturday, 7001 Orchard Lake, West Bloomfield.

### ● JEWISH COMMUNITY CENTER

Handicrafts, art, fashion, jewelry, carpets, all part of MASKIT, will be on display through May 5, 6600 W. Maple, West Bloomfield.

### ● GALLERY YAKIR

Sculpture by Israeli artist, Aharon Bezalel continues by only, call 352-4290.

### ● BLOOMFIELD TOWNSHIP LIBRARY

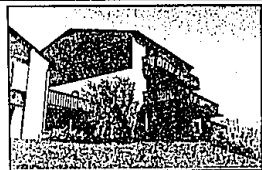
Exhibit of folk art, curated by Eva M. Bolcourt, is presented by the Friends of Polish Art in cooperation with the Polish American Community Humanities Project with funding from the National Endowment for the Humanities. The curator has found some real treasures from the metropolitan area for this exhibit which continues through May. Open during regular library hours, Lone Pine at Telegraph, Bloomfield Township.



## Merrill Lynch Realty



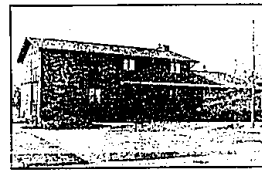
**GATEHOUSE COMMUNITY!** Superb Nolan built Colonial offers spacious living comforts. Island kitchen, alone fireplace in family room, bay windows, all on treed lot. 626-9100. \$184,900.



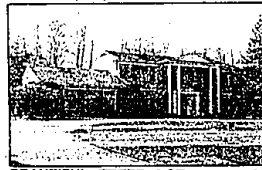
**PRESTIGIOUS WABEEK FAIRWAYS!** Executive condominium with 4 bedrooms, 3 1/2 baths, family room, fireplace living room and library. Bloomfield Hills Schools. A Must See! 851-8100. \$212,500.



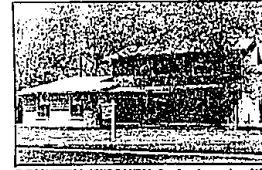
**ASSUMABLE MORTGAGE!** Excellent Potomac condominium includes 4 bedrooms, tacked-down carpeting, finished rec room, quality. Nice court location. 626-9100. \$104,900.



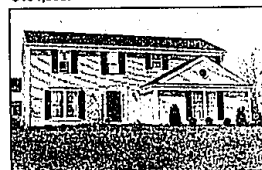
**BEAUTIFUL Colonial** backing to 13 acre common area with bike paths and lake for swimming, fishing. Fantastic views plus exceptional expanded family room. Just listed. 626-9100. \$164,900.



**BEAUTIFUL TREED LOT** surrounds charming home with 4 large bedrooms, library, family room with full wall brick fireplace. Master suite with bath and sitting area. 851-8100. \$255,000.



**COUNTRY KITCHEN** is featured with custom built Colonial offering earth-tone carpet, fresh decor, recessed lighting, central air, good formal 626-9100. \$76,500.



**FOX RUN GREEN** features maintenance free colonial in great family sub. 3 bedrooms plus insulated bonus room. Neutral decor, central air and large deck. Good terms. 851-8100. \$95,800.



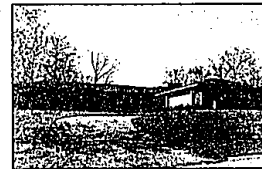
**LAKEFRONT LUXURY** on all-sport lake! Immaculate condition, finished rec room with bar, superb professionally landscaped setting. Call today. 851-8100. \$129,900.



**CUSTOM CHARMER** with bay windowed breakfast area, rec room, six panel doors, attached workshop and more. Prime Huntington Woods area. 626-9100. \$91,500.



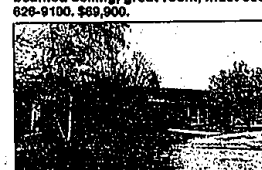
**OPEN SUN. 2-5.** 23685 Glen Creek, S. of 10 Mile, between Middlebelt and Inkster. Private scenic setting finds versatile 3 or 4 bedroom ranch with beamed ceiling, great room, must see! 626-9100. \$69,900.



**RAVINE LOT** offers custom one-owner home with open, flowing plan. Earth tone carpet, rec room with walk-out, extensive decking, superb! 626-9100. \$169,900.



**RAVINE SETTING** presents sprawling Ranch with beautiful trees, island kitchen, walk out finished basement. Library with built-ins, more. 626-9100. \$159,900.



**PRIVATE SETTING** features center entrance ranch with open floor plan. Ceramic tile foyer, almond appliances, custom window treatments, earthtone decor! 626-9100. \$69,900.



**KENDALWOOD!** Beamed ceiling family room highlights quality built Ranch on spectacular treed setting. Storage galore, new vertical blinds, natural stone fireplace, walk to schools. 626-9100.



**SPACIOUS CONTEMPORARY RANCH** in Southfield features vaulted family room with fireplace, quality extra master bedroom with private bath, more! 626-9100. \$87,400.

**BIRMINGHAM**

975 S. Hunter at 14 1/2 Mile Rd.  
646-6000

**BLOOMFIELD HILLS**

1520 N. Woodward at Long Lake Rd.  
647-5100

**FARMINGTON HILLS**

FRANKLIN 31000 Northwestern at 13 Mile Rd.  
626-9100

**TROY**

5017 Rochester Rd. at Long Lake Rd.  
689-8900

**ROCHESTER**

1020 W. University (in Meadowbrook Plaza)  
651-8850

**WEST BLOOMFIELD**

4315 Orchard Lake Rd. at Lone Pine Rd.  
851-8100

OPEN MONDAY-FRIDAY 9 A.M.-5 P.M., SATURDAY 9 A.M.-5 P.M., OPEN SUNDAYS



## DRASTICALLY REDUCED TO Below Our Cost FROM \$1,150,000 TO \$898,000.



1711 Morningside Way, Bloomfield Hills

The most magnificent residence in Wabec is now available at a great reduction in price. WE MUST SELL!

**MALCOLM LEVENTEN CORP.**

424-6702 559-5462

OPEN SUNDAY 1-5 P.M. BY APPOINTMENT  
Long Lake Rd. to Wabec Lake Drive East to Indian Summer to Morningside Way.



"The Strength of a Nation Lies in the Homes of Its People."

Abraham Lincoln

## PRIVATE PROPERTY WEEK

April 28--May 4, 1985

This weeklong observance reaffirms the rights that come with owning property. For most of us this means a home of our own. And as homeowners we tend to put down roots, to become involved in local government processes and to care about what takes place in our community and neighborhood.

The right to home ownership is precious and must never be taken for granted. We think it is a right that should be preserved for generations.

We are very proud of our role in your community--our twice-weekly publications contain advertisements from many fine Realtors, who consistently offer conscientious service and a wide variety of property.

We believe that we are instrumental in bringing both potential property owners and Realtors together.

We salute you both during this special week.



**Observer & Eccentric**  
NEWSPAPERS, INC.

You're A Whole Lot Closer To Home