

exhibitions

RUBINER GALLERY

Thursday, June 13 — Woodcuts by Carol Summers will be on display through July 10. Summers, an internationally known printmaker, will give a demonstration of his woodcut process during the opening reception 7-9 p.m. Thursday. Hours are 10 a.m. to 5:30 p.m. Tuesday-Friday, until 5 p.m. Saturday, 7001 Orchard Lake, West Bloomfield.

HILL GALLERY

Friday, June 14 — Sculpture by Ronald Leaz will be on display through July 3. Reception for the artist 6-8 p.m. Friday. Leaz is a very innovative artist who studied and worked at Cranbrook Academy of Art, 163 Townsend, Birmingham.

DETROIT ARTISTS MARKET

Friday, June 14 — "Auto Suggestions" runs concurrently with the big Detroit style show at the Detroit Institute of Art. This one looks at auto culture from a different perspective. Hours are 11 a.m. to 5 p.m. Tuesday-Saturday, 1452 Randolph, Detroit.

DETROIT FOCUS GALLERY

"Auto Effluvia: The Culture and Artifacts of Cars," is another of the shows honoring the great god, Car. This one too may be deliciously sacrilegious. Opening reception noon to 9:30 p.m. today. Hours are noon to 5 p.m. Tuesday-Saturday, 743 Beaubien, Detroit.

HABATAT GALLERIES

Saturday, June 15 — Works in glass by Ricky Bernstein, John Littleton and Kate Vogel are on the upper level and a show of glass by Jon Wicks is on the lower level. Reception to meet all of the artists 8 p.m. Saturday. Hours are 10 a.m. to 6 p.m. Tuesday-Saturday, until 9 p.m. Friday, 29235 Southfield, Lathrup Village.

YAW GALLERY

Furniture by Wendy Maruyama is on display through July 9. Hours are 11 a.m. to 5 p.m. Tuesday-Saturday, 550 North Woodward, Birmingham.

DETROIT INSTITUTE OF ARTS

"Automobile and Culture — Detroit Style" continues through Sept. 8 as the premiere exhibit of the museum's Centennial year. While it nearly runs away with all the attention, there is the first major exhibit of prints by Edouard Manet in the Schwartz Graphic Arts Galleries through July 21. Hours are 9:30 a.m. to 5:30 p.m. Tuesday-Sunday.

PONTIAC ART CENTER

Banners and sculptures, "Domestic Phenomena" by Susan Moran and sculpture and drawings, "Gateway," by Lincoln Eddy, continue through July 6. Moran, who has her masters in fine arts from U-M, teaches at Tyler School of Art, Philadelphia. Eddy is head of the woodworking department at Cranbrook Academy of Art. Hours are 9 a.m. to 5 p.m. Tuesday-Saturday, 47 Williams, Pontiac.

SHOWCASE DUGLASS

"Cereemonia Graven Images" titles this unusual sampling of masks and art objects from Indonesia, India, Malaysia, China, Japan and Mexico. All loaned by an area traveler/collector. To make luncheon and dinner reservations, call 424-9244, Restaurant Duglass, 29259 Southfield Road, Southfield.

WHITE DWARF

New gallery will combine clothing by contemporary designers with art by Michigan artists. The opening exhibit features work by Jill Farber of West Bloomfield who does charming soft sculpture cats and other things, along with works by Dennis Metea, Bill Davis and Steve Myran. Hours are 11 a.m. to 4 p.m. Monday-Friday, noon to 5 p.m. Saturday, 218 S. Main, Royal Oak.

ROBERT L. KIDD ASSOCIATES

"P.M. Voyage," exhibit of handmade paper wall sculptures by B.J. Bennett, and prints by Valentina Dubasky and Ida Kohlmeier continue through July 6. Hours are 10:30 a.m. to 5:30 p.m. Tuesday-Saturday, 107 Townsend, Birmingham.

UNIVERSITY OF MICHIGAN

Intaglios of the "Ten-Chi" Suite by Takeishi Takahara are on display through July 28. Hours are 11 a.m. to 4 p.m. Tuesday-Friday, 1-5 p.m. Saturday and Sunday, State Street at South University, Ann Arbor.

PAINT CREEK CENTER FOR THE ARTS

"Art and the Automobile," continues through Aug. 5. Features cars of tomorrow by the GM design staff and car-related works by area artists as well as auto renderings by students in the Center's auto design class. Hours are 10 a.m. to 5 p.m. Tuesday-Saturday, 407 Pine, Rochester.

XOCHIPILLI GALLERY

"Urban Realism," oil and acrylic paintings and charcoal drawings by Don Jacot continue through July 8, 588 N. Woodward, Birmingham.

BIRMINGHAM BLOOMFIELD ART ASSOCIATION

Palette and Brush Club have their 50th anniversary juried show at the Art Association through June 29. David Sharpe of EMU juried the show, 1516 S. Cranbrook, Birmingham.

CANTOR LEMBERG GALLERY

New paintings by William Antonow continue through June 29. The artist, who has an M.A. from Wayne, and was affiliated with Willa Gallery, now lives and works in New York. Hours are 11 a.m. to 5:30 p.m. Tuesday-Saturday, 538 N. Woodward, Birmingham.

BLOOMFIELD FINE ARTS

Watercolors of Michigan, Maine and Key West by John Wesley Cook will be on display through June 15. He's a Michigan artist whose oils and watercolors show his delight in marine sub-

jects. Hours are 10 a.m. to 6 p.m. Tuesday-Saturday, until 8 p.m. Thursday and Friday, 280 N. Woodward (lower mall) Birmingham.

CRANBROOK ACADEMY OF ART

Exhibition of graduate student work from the Academy's nine departments continues through Sept. 18. This is an excellent chance to spot trends in contemporary art. Hours are 1-5 p.m. Tuesday-Sunday, 500 Lone Pine, Bloomfield Hills. Admission charge.

CADE GALLERIES

The gallery is now at two locations, one in Detroit and a new one in Royal Oak. At the Royal Oak site through June are paintings by Dallas artist, Gregory Hornedski, 214 W. Sixth Street, Royal Oak. Hours are 10:30 a.m. to 7 p.m. Monday-Saturday.

DETROIT GALLERY OF CONTEMPORARY CRAFTS

New clay works by Jamie Flie, Susanne Stephenson, Pat Loughran, Jenny Lind and Stefanie Samuels and summer wearables by Judy Corti, 301 Fisher Building, Detroit.

BELIAN ART CENTRE

New gallery offers an eclectic balance of works, including Appel and Lichtenstein, in a serene setting, 5680 Rochester at Square Lake, Troy. Hours are 11 a.m. to 6 p.m. Monday-Saturday.

TOWN CENTER GALLERY

"The Bible Revisited," new carborundum etchings and lithographs plus original pastels by Israeli artist, Theo Tobiasse. Continues through June, 3000 Town Center, Suite 45 (use theater entrance). Hours are 10 a.m. to 5:30 p.m. Monday-Friday and 11 a.m. to 4 p.m. Saturday.

FEIGENSON GALLERY

Landscape paintings by Ruth Leonard of Detroit and New York will be on display through June 29. Hours are 11 a.m. to 5 p.m. Tuesday-Saturday, 310 Fisher Building, Detroit.

HALSTED GALLERY

Photographs by the great Western photographer, Edward S. Curtis, and a selection of North American Indian baskets and Navajo rugs are on display through July 14. Hours are 10 a.m. to 5:30 p.m. Tuesday-Saturday, 580 N. Woodward, Birmingham.

PHYLLIS KRAUSE GALLERY

The art of objects in this new gallery are a collection of tribal beaded jewelry from Nagaland, India, puppets from Burma and Thailand and small rugs from Morocco and Afghanistan. Hours are 11 a.m. to 5 p.m. Tuesday-Saturday, 29 W. Lawrence, Pontiac.

PRESTON M. BURKE

Works by Shaye, Risak, Lencioni, Nani and Loos are on exhibit through July 1. Hours are 9 a.m. to 5:30 p.m. weekdays, 430 W. Larned, Detroit.

CENTER FOR CREATIVE STUDIES

Largest and oldest student show and sale continues through June 12. Show, which is all over the campus, is 11 a.m. to 4 p.m. (except May 25, 26), 245 E. Kirby, Detroit.

GALLERY BIRMINGHAM

Recent works on paper by Susan Thomas will continue through June 17. Thomas is an award-winning Birmingham artist having her first one-artist show. Hours are 10 a.m. to 5 p.m. Monday-Saturday, until 8 p.m. Thursday and Friday, 223 S. Woodward, Birmingham.

SUSANNE HILBERRY

GALLERY INC.

New paintings by Ron Gorchov will be on display through June 22. Hours are 11 a.m. to 5 p.m. Tuesday-Saturday, 555 S. Woodward, Birmingham.

PIERCE STREET GALLERY

"Visualities" by Judith Winston combines fine art and photography in an unusual series of hand-painted photographs using historic Michigan barns, 217 Pierce, Birmingham. Hours are noon to 5 p.m. Wednesday-Saturday.

J. IRVING FELDMAN GALLERIES

Kite paintings, paintings on canvas, acrylics on paper, watercolors and graphics by Richard Smith continue through June. Hours are 10 a.m. to 5 p.m. Monday-Saturday, until 8 p.m. Thursday, 6017 Orchard Lake, West Bloomfield.

You're living on top of the World. Ridgcrest at the Park



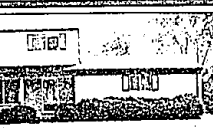
High above an established community of luxurious homes is an enclave of six exceptional homesites. Heavily wooded with a breathtaking tree-top view, these sites will be built with new home plans that preserve the natural contours of the land. Crafted by The Herman Frankel Organization, these homes contain innovative features, exciting details and spectacular views. Information is available now for Ridgcrest at the Park and other homes in The Park at Bloomfield Lake.

There are only 6 homesites on the ridge. See the new Ridgcrest model. From \$259,000. Model Phone: 626-3502. Main Office: 626-3500. See other models in The Park at Bloomfield Lake from \$249,000 (Bloomfield Hills Schools). The Park can be found west off Middlebell Rd., south of Lane Pine Rd. Follow Woodcuff signs to Information Center. Open noon to 6 p.m. every day, except Thursday. Sales by:



MAGNIFICENT COUNTRY ESTATE HOME nestled on ten acres of rolling, wooded terrain in Metamora. This home has been built in the highest of standards with exact architectural detailing throughout, reminiscent of the Georgian period. Large open rooms with high ceilings, 3 fireplaces, modern kitchen, 5 bedrooms and 5 1/2 baths. Beautiful woodwork and plaster detail throughout, including top quality windows with marble sills. Extra amenities include a well maintained in-ground pool, attached 3 car garage with asphalt circle drive, hilltop setting with expansive view of grounds, mature pines and flowers. Zoned for horses with added advantage of hunt club within walking distance. Owner is serious. Financing available. \$245,500. MARGE HENRY REALTOR CALL 678-2445

CALL 678-2445



MOVE RIGHT IN. 3 bedroom, 1 1/2 bath colonial. Beautiful lot. Refrigerator, stove, washer and dryer included. Family room with fireplace. Motivated sellers. \$81,000. 558-2300.

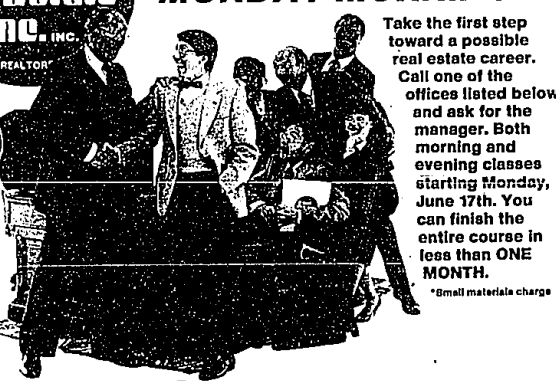


PRIDE OF OWNERSHIP shows in this immaculate custom 3 bedroom ranch, open floor plan with stairs leading down to finished rec room, many energy saving features, large patio and private backyard. \$119,900. 851-1900.



ELEGANT COUNTRY HOME. Extensively remodeled older home on an acre estate with large in-ground pool and delightful entertainment area. \$139,500. 851-1900.

FREE* PRE-LICENSE CLASS STARTS MONDAY MORNING



Take the first step toward a possible real estate career. Call one of the offices listed below and ask for the manager. Both morning and evening classes starting Monday, June 17th. You can finish the entire course in less than ONE MONTH. *Small materials charge



RAMBLING RANCH. Very appealing floor plan. Large finished basement with wet bar, all appliances stay also riding lawn mower. Beautiful 3 bedroom, 2 bath ranch on large lot. \$27,500. 558-2300.



OLDE FRANKLIN TOWNE! Gracious 4 bedroom colonial with over 3,000 square feet. Ready for family enjoyment. Amenities include a huge pool, central air, marble flooring in dining room plus much more. Superb location. \$149,900. 851-1900.



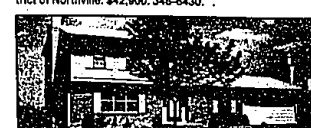
ROLLING OAKS AREA. 3 bedroom ranch, contemporary floor, open floor plan, family room with fireplace, air, alarm, sprinklers, etc. Backs to commons. \$134,800. 851-1900.



SIMPLE ASSUMPTION. Fabulous wooded setting, no neighbors behind in this custom quality 4 bedroom, 2 1/2 bath colonial with 6 panel doors, stained woodwork, den, approximately 2700 square feet. \$134,900. 861-5700.



GREAT STARTER HOME. Features 2 bedrooms, full basement and garage. Within walking distance to business district of Northville. \$42,900. 348-6430.



Four bedroom lakefront colonial in Novi's Village Oaks. Living room with fireplace, separate dining room. Beautiful deck overlooks lake. \$85,900. 348-6430.

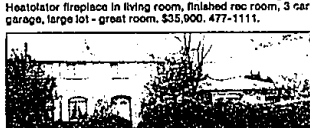
LATHRUP VILLAGE 559-2300 WESTLAND 326-2000 LIVONIA 525-0990 FARMINGTON 477-1111 FARMINGTON HILLS 851-1900 LIVONIA 261-0700 PLYMOUTH/CANTON 455-7000 NORTHVILLE 348-6430



KENDALLWOOD RANCH. Brick home on large treed lot, 3 bedrooms, Florida room, family room with fireplace, 1st floor laundry and 2 car garage. Quick occupancy. \$79,900. 477-1111.



SOUTHFIELD STARTER. 3 bedroom, aluminum bungalow. Heatless fireplace in living room, finished rec room, 3 car garage, large lot - great room. \$35,900. 477-1111.



LAKE SHERWOOD BEAUTY! Reduced. 6 bedrooms, 3 1/2 baths all brick colonial. 3 car garage, sprinkler system, circle drive. Best location on lake with 170 foot frontage. Finished walkout. \$220,000. 477-1111.



HISTORIC FARMINGTON. Charming 3 bedroom 2 story home. Full basement, triple track storm windows. Covered front and rear porches. Fantastic terms - simple assumption. \$78,900 477-1111.



INGROUND POOL. Nicely kept 3 bedroom Tri-Level with central air and newly decorated. Beautiful patio area and decking surrounds free form pool. Completely fenced yard. \$84,900. 477-1111.