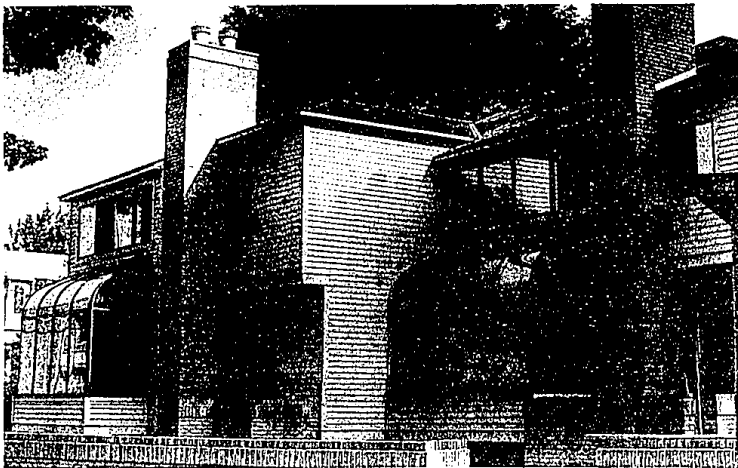


Condos tailored to fit site, surroundings



JERRY ZOLYNSKY/staff photographer

The three condos (above) at Townsend and Southfield by the Brown Street Co. are of terra cotta brick and a soft taupe/gray. Each has a private courtyard in front. The four new ones at Woodward and Brookside, designed by Fred Bidigare working with Dennis McDermitt, were planned for a tight, charming site with the Rouge River running diagonally across the front.

The project on Brookside is by architect Fred Bidigare, a graduate of the University of Detroit School of Architecture. Bidigare, along with Dennis McDermitt business man, have built an amazing arrangement of five condominium units which will literally float over the upper reaches of the Rouge River.

By Dale Northup
special writer

As someone put it so beautifully, "The ending marks a new beginning."

Two old houses have given way to newer housing in downtown Birmingham. One was formerly located on Brookside and Ravine (1920). The other was on Townsend and Southfield (1916).

In their place are remarkably well designed condominium projects which reflect architects who are sensitive to sound site planning. As well, the projects will tend interest and diversity to the architectural character that makes Birmingham a unique community.

The project on Brookside is by architect Fred Bidigare, a graduate of the University of Detroit School of Architecture. Bidigare, along with Dennis McDermitt business man, have built an amazing arrangement of five condominium units which will literally float over the upper reaches of the Rouge River.

The units are set back so as to allow a corner window in the living room areas an affordable view of the river. Balconies in the master bedroom areas will overlook the park across North Woodward.

THE SITE planning on Brookside can be compared to Frank Lloyd Wright's "Fallingwater," one of the most famous houses of the 20th century. Whereas Wright used re-inforced concrete for his soaring structure, Bidigare has used structural steel to support the main part of the living area over the parking spaces below.

In addition, courtyards on Brookside and the gable end roofs, an important design consideration, will relate the project to the surrounding neighborhood. Brookside Condominiums are "of" the site

rather than "on" it.

The units comprise two floors of living space with the mechanical and parking area on the third lower level.

The project on Townsend and Southfield is by the Brown Street Co. — William and Mariah Finnicum and Larry Frederick. William Finnicum, the architect, is a graduate of Ohio University. Mariah Finnicum is the project supervisor and Frederick handles the business side.

WHILE ZONING on Townsend allows for R-7, multiple highrise, the architect chose townhouses relating to the residential character of the neighborhood.

The three condominium units are placed diagonally, fronting on Townsend with setbacks. Courtyards in the front will create some individual identity for the residents. The back allows for two-car garages over which are placed balconies looking out over Southfield and the park beyond.

The units have southern oriented solar spaces which will complement year-round greenery much like the Brown-Frank Street project also done by the Finnemics.

"Imagine," said Mariah Finnicum, "being able to see vegetation from the outside in the dead of winter."

Another interesting design feature is the stairwells with curved walls. They lead the individual from one level to another. The units comprise 2,000 square feet of living area. Large windows will allow the light to pervade the interior space. The overall design is based on simplicity.

The Brookside and Townsend projects are a study in contextualism in which the new will co-exist harmoniously with the old.



The painting at left by Michigan artist William House, which was in a Rubiner Gallery show about a year ago, is of the house that was formerly near the corner where Brookside and Ravine come together. For many people, its unusual architecture made it a landmark.



BLOOMFIELD VILLAGE - Large family home is perfect for the car enthusiast. Five bedrooms, 4 full and 2 half baths, open family room with wet bar and built-in bookshelves, lovely Florida room, library and 6 car garage. \$375,000. (H-54164).



BLOOMFIELD HILLS SCHOOLS - Builder's Model Quality maintained colonial has access to 3.5 acres of natural park, 5 bedrooms, 2 full and 2 half baths, library, music room and patio. \$179,500. (H-56196).



PRINCETON - Updated bi-level has a stunning living room with cathedral ceilings, newer kitchen appliances, family room, finished hobby room, hardwood floors and alarm system. \$195,000. (H-48882).



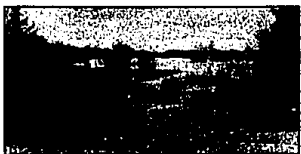
BIRMINGHAM

Fabulous landscaping accents this exciting Don Paul Young contemporary ranch with travertine marble in foyer and powder room, living room with high ceilings, 2-story family room with built-in storage wall and built-in sofa, skylight in kitchen and a finished rec room. \$389,000. (H-68077).



BIRMINGHAM

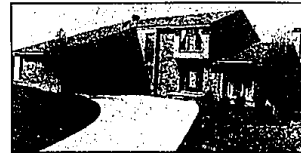
California contemporary has vaulted ceilings and stone/terrazzo floor in foyer, 10' ceilings in living room plus built-in bar, white formica kitchen cabinets and oak floors, library, finished rec room, central air, and pool. 3-4 bedrooms and 4 1/2 baths. \$248,998. (H-65231).



INDIANWOOD LAKE FRONTAGE! Unique home with many details has 3 bedrooms, 4 baths, great room, fantastic library with cathedral ceilings and beautiful woodwork, 2 fireplaces and enclosed porch. Three car detached garage with apartment. \$275,000. (H-47388).



JUST REDUCED! OPEN SUN. 1 to 4 - 600 Brown St., Birmingham (S. of Maple and E. of Southfield). IN-TOWN Unit is priced to sell! Two bedrooms, 2 baths, lovely view from balcony, security in each unit and good guest parking. \$94,900. (H-47728).



SHARP WEST BLOOMFIELD HOME has a ceramic tile entry, great white formica kitchen, formal dining room, great room plus family room, studio ceilings and jacuzzi tub in master bedroom and more. Four bedrooms and 2 1/2 baths. \$174,900. (H-67698).



CRANBROOK VILLAGE - Great family area! Three bedrooms, 1 1/2 bath home has a country kitchen overlooking the family room with brick wall fireplace and glass doors to treed lot. \$73,900. (H-68640).



CITY OF BLOOMFIELD HILLS - Lovely Cape Cod situated on a two acre site is larger than it appears. Four bedrooms, 2 full and 2 half baths, library, spacious new family room with bay windows and pool. \$298,000. (H-58953).



Hannett, Inc. Realtors

2523 w. maple at cranbrook 646-6200 birmingham, mi. 48009

MEMBER
ERC
EMPLOYEE
RELOCATION
COUNCIL