



## Go on home tour

A tour of six historic structures in Ypsilanti will be held noon to 5 p.m. Sunday, Aug. 25, in Ypsilanti. Pictured is the old town hall, built in 1880 by Daniel Lacey Quirk, once again a private residence. Visitors will see living spaces created from a shattered old hotel hulk, a Gothic Revival cottage, an elegant private residence and turn-of-the-century dwellings, all saved from ruin. Tickets \$4 for adults, \$3 for seniors, are available at the ticket booths on the Cross Street bridge and in front of the museum on North Huron.

## School starts fall with new director

Detroit Community Music School, an affiliate of Center for Creative Studies, will start the school year with a new executive director, Steven J. Nelson.

The former Cleveland resident brings a strong background in public relations, program development and fund raising to his new position, which he is assuming this month.

He was executive director of the Arthritis Foundation for eight years and before that held executive positions with Diamond Shamrock Corp., Western Reserve College Association and Cleveland Clinic Foundation.

Registration for Detroit Community Music School, a 59-year-old school for the performing arts, begins on Sept. 5.

The registration office will be open noon to 5:30 p.m. Aug. 19-22 and Aug. 26-29 for students interested in studying instruments, voice or dance.

Pre-school programs, ensembles, music theory and the Detroit Children's Choir are also available.

The school recently received a grant from the National Foundation for Southeastern Michigan for a project to provide music therapy for the frail and elderly.

Mary Roberts, registered music therapist, chair of the school's music therapy division, will supervise this new program.

The school serves students from very young to very old. For information on any of these services, call 831-2870.

## Music Hall Center's dance card is filled

Michigan company to participate in the Dance Touring Program in the 1977-78 and 1981-82 seasons.

Kicking the season off is the Hubbard Street Dance Company, Oct. 23-27. This Chicago-based company provides Broadway-jazz style of dance with one of Detroit's own, Kitty Skillman.

In November the "father" of post modern/dance garde Merce Cunningham and his company stop in Detroit for a limited engagement, Nov. 20-24.

Feb. 5-9 spotlights the return of the Detroit City Dance Company under the direction of founder/choreographer, Carole Morrisseau.

The season continues Feb. 26 to March 2, when the award winning Alvin Ailey American Dance Theater comes to Music Hall.

Highlighting early spring will be the Harbinger Dance Company, on the Music Hall stage March 19-23.

Under the artistic direction of Lisa Nowak, it was selected by the National Endowment for the Arts as the only

Michigan company to participate in the Dance Touring Program in the 1977-78 and 1981-82 seasons.

Music Hall Center will present the Royal Winnipeg Ballet, April 18-20. The company is under the artistic direction of Arnold Spohr.

Closing out the 1985-86 season will be a split week, featuring two modern companies. On May 7 and 8 Elissa Monte Dance Company will perform.

Monte, artistic director/choreographer has had her works incorporated into the repertoires of four other companies — Alvin Ailey, San Francisco Ballet, the Gulbenkian Ballet of Portugal and The Ririe-Woodbury Dance Company moves in May 9 and 10. This company from Salt Lake City has a reputation for a varied repertory featuring theatrical staging, mixed media and humor.

Season tickets to the 1985-86 Dance Series offer discounts for adults, whether opting for all seven companies or as few as four. Music Hall also offers students, senior citizens and children a special subscription rate. For information, call 963-7622.

## Auditions announced

• Rackham Symphony Choir, Detroit's oldest civic symphony chorus, announces auditions for the 1985-86 season.

They will take place 7:10 p.m. Tuesday, Wednesday and Thursday, Sept. 3, 4 and 5 at the Wayne State University Music School, Room 101, 5451 Cass Avenue.

Rehearsals for the year begin 7:15 p.m. Tuesday, Sept. 10 from 7:15 p.m. at Wayne State University.

This year the choir will perform the Verdi Requiem at Orchestra Hall in February and again in May with the Macomber Symphony Orchestra at Macomber Community College.

The choir will also sponsor its own "Messiah" sing-along concert on Dec. 14 at St. Mary's Church in Grosse Pointe.

In addition, they will join with the Warren Symphony for a performance of Beethoven's Ninth Symphony in April. A cabaret concert at the Ford House in Grosse Pointe will conclude the season in June.

All singers interested in joining the Rackham Choir must audition at one of the times specified. Please call 863-8828 and leave name and phone number for an appointment.

• Young Dancers Company, teenage performing dance company of the Jewish Community Center, will have an open audition 1-3 p.m. Sunday, Sept. 8, at the Center's main building, 6600 W. Maple, West Bloomfield.

Marina S. Cantarella, is composed of dancers 8-17 years who meet 1-4 p.m. Sundays. Dancers are encouraged to do some of their own choreography. For information, call 861-1000, Ext. 164.

• Chorus Academy of Metropolitan Detroit will hold vocal auditions 7:10 p.m. Wednesday and Thursday, Sept. 4, 5.

Frederick Bellinger is director of the 45-voice professional ensemble which is celebrating its silver anniversary this year. For audition information, call 478-5718 or 528-1331 after 6 p.m.

• Detroit Dance Collective will hold auditions for company members 10 a.m. to 1 p.m. Friday, Aug. 23, room D204 Oakland Community College, 739 S. Washington at Lincoln, Royal Oak.

This is a modern dance company directed by Barbara Selinger and Paula Kramer. Contracts are available for men and women trained in modern dance and ballet. For information, call 848-9654.

• Madrigal Chorus of Southfield will hold auditions at 7 p.m. Tuesday and Wednesday, Aug. 27, 28, in the choir room of Southfield-Lathrup High School, 19301 W. 12 Mile, Southfield. The Chorus, under the direction of Carolyn Eynon, rehearses 7:30-9:30 p.m. Tuesdays. Those interested should have a solo prepared along with sight reading and scales. Accompanist will be provided. For audition time, call 846-1937.

# Palette and Brush sparks creativity

Many organizations for artists spring up, thrive and eventually fade away.

Not so for the Palette and Brush Club.

This organization, founded by Alice Bostick of Redford in the heart of the Depression, continues to flourish. In fact the club's contribution to the life of the community was officially recognized when Oakland County Commissioner David L. Moffitt, R-Birmingham, presented a proclamation of commendation to that effect at the club's 50th anniversary luncheon at Meadow Brook Hall last June.

IN ATTENDANCE at that event was Alice Bostick, 97, along with many members now in their 80s and 90s.

The luncheon was about mid-point in the year-long celebration which began with a small painting show at Main Street Gallery of Red Oak last December and will culminate with a show at the New Center One in Detroit's New Center area on Nov. 4.

A special anniversary show was held at Birmingham Bloomfield Art Association in June with a display of the club's scrapbooks from five decades as well as art juried by David Sharp of the

Eastern Michigan University art faculty.

"We have two juried shows a year," said Kay Kann, 60th anniversary chairperson, "sometimes you get in and sometimes you don't."

Kann said there are presently more than 100 members from 24 metropolitan area communities. And because meetings are held during the day on the fourth Thursday of the month at the MCL Cafeteria, Tel-Twelve Mall, Southfield, the members are about 90 percent women.

HOWEVER, TWO men members, Leonard Cyr and Ted Sloboda, are more than token males. Their works frequently meet with the juror's approval and make it into the shows.

True to its original structure, Palette and Brush continues to provide constructive criticism and teaching with guest speakers at the monthly meetings.

Palette and Brush began as an art class taught by an unemployed teacher, Doris Porter, and was funded by the FERA (Federal Education Relief Agency). She gave a morning class in

interior decoration and design, and an afternoon class in drawing and painting at Burt School, Redford.

Porter was later instructor for evening art classes at Redford High. At the instigation of Mrs. Joseph Varnhagen, Sr., a club grew out of the class enrollment.

Yearly scholarships are part of the

club's ongoing program to encourage promising young artists. Two \$500 scholarships were awarded to celebrate the anniversary year.

New members are always welcome, Kann said. They must have a sponsor from the club and submit samples of their work to be juried by a group of Palette and Brush members.

## Writers meet Oct. 18-19

The 24th annual Writers Conference, sponsored by Detroit Women Writers and Oakland University, will be held Oct. 18-19 at Oakland University.

Keynote speakers will be Carolyn Chute, author of the best-seller "The Beans of Egypt, Maine"; Ira Blumenfeld, TV script writer; and Charlotte and Mary Esther Nolan, Kentucky story-tellers.

Thirty-two separate workshops plus lab sessions will be available for both experienced and novice writers. These will be headed by authors, agents and editors from all around the country.

For a conference brochure, call Oakland University, Division of Continuing Education, 370-3128.

## Local news you can use • Local news you can



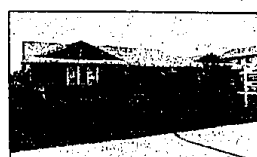
## Merrill Lynch Realty



**ENJOY MIDDLE STRAITS LAKE.** Maintenance free lakefront Colonial offers great views. Includes expansive deck on waterfront. 4 bedrooms, library, 851-8100 \$168,000 (DWA)



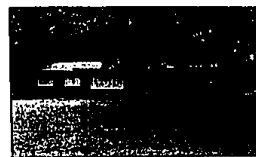
**PRIVATE PROFESSIONALLY LANDSCAPED** yard highlights sharp 4 bedroom Colonial. Two patios, formal dining, library, family room. Zoned heating, central air. Farmington Schools. 626-9100 \$169,900 (DFE)



**DESIRABLE FARMINGTON HILLS** Ranch overlooks commons. Versatile floor plan, formal dining, family room, central air. Professionally landscaped. 626-9100 \$129,900 (LFI)



**CHARMING COLONIAL** includes cozy Florida room with garden view. Some hardwood flooring, 2 fireplaces, formal dining. Easy access to shopping, expressways. 851-8100 \$99,900 (HWA)



**COUNTRY ATMOSPHERE** accents this lovely Ranch. Walk-out basement with kitchen, bath. Fireplaced den, updated 1st floor kitchen, oversized garage. 626-9100 \$74,900 (GFA)



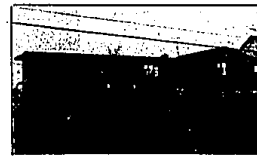
**LARGE FAMILY COLONIAL** with private screened patio is located on lovely tree lot. Cozy fireplaced family room, formal dining, library. Farmington Schools. 626-9100 \$109,500 (8FK)



**COLONIAL IN QUIET AREA** with private court setting is nearly maintenance free. Full wall brick fireplace, formal dining, air. Convenient location. 626-9100 \$72,900 (HFA)



**FAMILY COLONIAL** features open kitchen, large formal dining, family room. Earth tone carpeting, patio, central air. 4 bedrooms, 2 1/2 baths. 626-9100 \$72,900 (PFI)



**LOVELY HALF ACRE** lot accents this Contemporary bi-level. Custom built, energy efficient with family room, all appliances. 851-8100 \$79,900 (SWL)



**SHARP 2-STORY Condominium** in model condition features gas fireplace, courtyard, basement with cedar closet. Appliances plus microwave, family room, patio, pool, clubhouse privileges. 626-9100 \$74,900 (GFL)



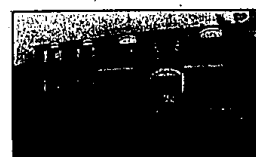
**BRIGHT, CHEERFUL RANCH** includes great floor plan with spacious family room. Patio and private back yard. Close to shopping, expressways. 851-8100 \$62,000 (WWA)



**MIDDLE STRAITS LAKE** privileges with efficient 2 bedroom Ranch. Thoroughly remodeled with oak flooring, new kitchen, plus outside remodeling. West Bloomfield Schools. 851-8100 \$67,900 (WVO)



**UNION LAKE PRIVILEGES.** Maintenance-free Ranch includes large fireplaced living room, family room and dining room overlooking treed yard. Glass enclosed porch. 626-9100 \$59,900 (WFE)



**FARMINGTON HILLS.** Lovely 1 bedroom Condominium in quiet adult complex faces courtyard. Doorwall to balcony, master bedroom with walk-in closets. Simple Assumption. Carport. 626-9100 \$42,900 (8FH)



**IMPRESSIVE COLONIAL** in desirable Dearborn Hills features leaded glass windows, formal dining, breakfast area, family room. Plenty of storage, custom window treatments. 626-9100 \$64,900 (HFI)

BIRMINGHAM	BLOOMFIELD HILLS	FARMINGTON HILLS FRANKLIN	TROY	ROCHESTER	WEST BLOOMFIELD
525 S. Lapeer at 11 Mile 646-6000	1520 N. Woodward at 11 Mile 647-5100	11000 Northpark at 11 Mile 626-9100	5011 Buchanan Rd at 11 Mile 689-8900	3000 W. University at 11 Mile 651-8850	11000 W. Lapeer at 11 Mile 841-8100
OPEN MONDAY-FRIDAY 9 A.M.-5 P.M. SATURDAY 9 A.M.-5 P.M. OPEN SUNDAYS					