

Travel



10C(B)(T-14A, S-11A, F-13C) 10C(A)(R-10A, W, G-6C)

O&E Thursday, August 22, 1985

Here's potpourri of ideas for cooking up vacations

MY MAILBAG is brimming with things to do this fall, in Michigan and throughout the country and the world. Labor Day is a good time to use this information to plan a close-to-home trip or something more exotic and far away.

The Michigan Department of Transportation estimates that motorists will drive a record 790 million miles during this 78-hour Labor Day weekend in Michigan, up three percent from last year. That caps a summer that is expected to bring up to \$4 billion into state coffers because of tourism, the best we've done since the record-setting season of 1978.

If you are still making plans for the long weekend, you will find county fairs, and festivals dedicated to fruit, fish and just plain fun, throughout Michigan. Call the Michigan Travel Bureau toll-free 1-800-292-2520 for events along the roadway you have chosen for your wanderings.

The state travel bureau, or one of the four regional bureaus, will give you information about any of the events going on in the weeks to come: West Michigan Tourist Association, 816-456-8557; East Michigan Tourist Association, 517-895-8557; Upper Peninsula Travel and Recreation Association, 905-774-5480; Travel and Tourism Association of Southeast Michigan, 585-8220. The hotline number for southeast Michigan is 585-7233.

FEELIN' PEACHY? — Word comes regarding Michigan's 1985 peach crop, 20 percent higher than 1984. Bob Underwood, manager of the Traverse City area's largest farm market, attributes the increase to "extremely favorable weather and no spring frost. One of the best fruit crops of recent times."

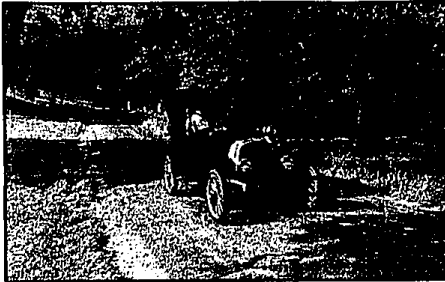
Before you drive to T.C., call Bob at 816-947-8789 for latest harvest conditions, or the Michigan Travel Bureau for U-Pick farm information.

MOM, B'ALL, AND APPLE FESTS — A bumper crop of state fruit festivals has three for apple addicts, beginning with the Sept. 20-22 Apple Festival in Niles. Bangor's Apple party is Oct. 10-14; Charlevoix breaks out the cider Oct. 12-13.

OLD CAR FESTIVAL — Its 35th year for this prestigious gathering of vintage vehicles and costumed owners at Greenfield Village, Sept. 7-8. Parading past judges who check under the hood for authenticity, all 350 of the classic REOs, Pierce Arrows, Model T's, et al, from the 1890s to 1920s are in running condition. On the Village Green and special events field; no additional charge for admission. 271-1620.

WRECKS IN PARADISE — The Lake Superior light station at Whitefish Point, 11 miles north of Paradise in Michigan's UP, now includes a Shipwreck Museum. Exhibits and video tapes to-day, tomorrow's plans include an enormous open diorama and special effects, giving guests an underwater you-are-there experience. Open 11 a.m. to 7 p.m., seven days a week until Oct. 15. \$1.00 admission. (Tahquamenon Falls, good rockhounding nearby).

ADVANCE TO PARK PLACE — Groups convening in Ann Arbor should ask for parking passes for attendees. A windshield card permits free parking at all City of Ann Arbor meters as long as you observe posted restrictions. Not valid for university service restrictions. Not valid for university



A sure-fire fall attraction is the 35th annual old car festival to be held in Greenfield Village, Sept. 7-8. About 350 cars will be judged. Visiting the car show and the area makes for a good weekend vacation.

meters (colored blue and gold) or private lots. Contact A.A. Conference and Visitors Bureau, 207 E. Washington, Ann Arbor 48104. 313-995-7231.

MOUNT SNOW, VT. — Balcony seats (best in the house) for New England's fall color show are reached by gondola operating from Mt. Snow's base area and the 3,600 foot summit. At the top is the new Summit Lodge, food, drink and a view of forever. Mt. Monadnock, Mt. Washington, and peaks of the Killington Range. Mid-Sept. to mid-Oct.

PRESTONBURG, KY. — The eastern Kentucky highlands will ring with the sound of traditional music from England and Ireland, the kind of fiddling that gave roots to bluegrass. The Kentucky Highland Folk Festival, Sept. 6-8; storytelling, country clomping, mountain joys.

MARIETTA, OHIO — Painted, polished and puffing their little smokestacks out, old paddlers from up and down the Ohio River are gathering to race it out at the Stevedore Festival. Fireworks and other fun, but the boats are a really rare event. Sept. 6-8. 614-373-5178.

CHICAGO, ILL. — "Spiked Heeled Frenzy?" "Sentinel for the Curmudgeon?" What kind of a name is that for a piece of sculpture? See for yourself. Seven acres near downtown Chicago have been turned into an authentic Illinois prairie — complete with buffalo grass and rye — as a setting for the somewhat whimsical sculptured works of 10 acclaimed artists. Visitors to "Sculpture Chicago" can watch the creative ones working in outdoor tent studios every Tuesday through Sunday, from 9:30 a.m. to 6 p.m. for five weeks following Labor Day.

NIAGARA-ON-THE-LAKE — The Shaw goes on, until Oct. 13. "Murder On the Nile," "The Women," "Heartbreak House," etc. can still be seen at Ontario's Shaw Festival (featuring G.B.S. and his contemporaries). Held in three theaters, seats are not available for every show, but chances of getting tickets are good if you call in advance. For a program list write to P.O. Box 774, Niagara-on-the-Lake, Ontario, Canada L0S 1J0. 416-468-2153.

EXPO '86 — Opening in Vancouver, B.C., on May 2, 1986, is at the ticket-selling stage. Tickets are



September is one of the best times of year to enjoy Michigan beaches. Solitude and serenity are available and the weather

is still warm. This shot is of a Lake Michigan beach at Grand Haven.

One of four regional state travel associations provides information about upcoming events.

The numbers are: West Michigan, 616-456-8557; East Michigan, 517-895-8557; Upper Peninsula, 906-774-5480; Southeast Michigan, 585-8220.

available at 150 branches of Washington State's Seafair Bank. If that's too far, write Expo 86, P.O. Box 1986, Station A, Vancouver, British Columbia, Canada V6C 2X5, for ticket and general information.

CRUISE SHY? — The three-day cruise, designed for people who aren't sure they'll like cruising, is a great way to add spice to your Florida vacation. Premier Cruise Lines have three and four day getaways to the Bahamas from Port Canaveral, Florida with special deals that include EPCOT at Walt Disney World and a free Greyhound bus to pick you up anywhere along the Florida coast. Food, entertainment, gambling, food, a private island stop, exciting shopping, food... The sell is in the sampling. For full details, consult your travel agent or write to Premier Cruise Lines, 101 George King Boulevard, Port Canaveral, Cape Canaveral, FL 32920. 305-783-9061.

FEAR OF ILLNESS — For the easy-queasy, anxiety about being sick overseas can knock out travel, but even the healthiest roamers need a doctor now and then. The International Association for Medical Assistance to Travelers (IAMAT) has a world-spanning directory of English-speaking doctors who charge moderate fees. IAMAT also issues bulletins regarding disease risk areas (such as malaria) with preventative steps to take, world immunization chart for 200 countries, your personal clinical record, world climate charts, etc.

No cost for membership, although tax-exempt donations are welcome. Write to IAMAT, 736 Center St., Lewiston, N.Y. 14092. 716-754-4885.

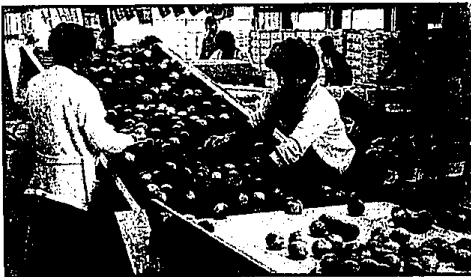
New! Fall & Winter
Sunshine Vacations

All Prices Include Air, Hotel, Transfers & More!

<p>Acapulco</p> <p>7 NTS AS/LOW \$269</p> <p>Saturdays starting November 10. Choice of 8 hotels. Prices from \$269 to \$679.</p>	<p>Aruba</p> <p>7 NTS AS/LOW \$399</p> <p>Saturdays starting November 16. Choice of 9 hotels. Prices from \$399 to \$1,129.</p>	<p>Cancun</p> <p>7 NTS AS/LOW \$329</p> <p>Fridays starting November 15. Choice of 10 hotels. Prices from \$329 to \$1,049.</p>	
<p>St. Thomas</p> <p>7 NTS AS/LOW \$499</p> <p>Sundays starting November 17. Choice of 6 hotels. Prices from \$499 to \$1,399.</p>	<p>Casa de Campo</p> <p>7 NTS AS/LOW \$459</p> <p>Saturdays starting November 10. Choice of 4 types of accommodations. Prices from \$459 to \$679.</p>	<p>Santo Domingo</p> <p>7 NTS AS/LOW \$399</p> <p>Saturdays starting November 16. Choice of 2 hotels. Prices from \$399 to \$699.</p>	
<p>San Juan</p> <p>7 NTS AS/LOW \$469</p> <p>Sundays starting November 17. Choice of 5 hotels. Prices from \$469 to \$1,229.</p>			<p>PLUS... Soon to be Announced</p> <p>Puerto Vallarta — Thursdays beginning December 19th</p> <p>Jamaica — Sundays beginning December 22nd</p> <p>St. Maarten — Mondays beginning January 20th</p>

Your Travel Agent Has Full Details

SamsonTours



Michigan's peach crop is 20 percent higher than 1984. Workers near Traverse City pass on the crop. Visiting the area where fruit abounds may make for a good fall vacation.

Florida is big draw for those who drive

Florida continues to lure more Michigan vacationers who drive than any other area, says AAA of Michigan.

AAA based its count on AAA Michigan auto Trip-It routings requested. The second most popular destination area, according to the request, is the Ohio-Indiana-Illinois region.

Other popular areas are: Ontario, the Georgia-North Carolina-South Carolina region and the mid-Atlantic states (Washington D.C., Maryland, Virginia and West Virginia).

For those Florida bound, the top attractions are Walt Disney World and a Epcot Center, Busch Gardens, Kennedy Space Center and Sea World.

Come To Old Amherstburg
The Navy Yard Restaurant

EVERY FRIDAY NIGHT
BEGINNING AUGUST 2nd
"Our Seafood Feature"

A Selection of Fresh Seafood
*In addition to our regular menu
Call for reservations

Navy Yard Restaurant

252 Dalhousie St., Amherstburg
1-519-738-6474

BIRMINGHAM GREAT ESCAPE 540-8080	DEARBORN POWER TRAVEL AGENCY 2445 S. Telegraph 562-1700	FARMINGTON Robert REED TRAVEL & TOURS 2445 S. Telegraph 35107 Grand River 476-5800	LIVONIA THE TRAVEL SERVICE 15000 Livonia 352-0078 4212 Orchard Lake Rd. 352-1111	SOUTHFIELD SABRA TRAVEL Farrell's Shopping Plaza 29331 Southfield Rd. 525-1106
BIRMINGHAM SCOTT'S TRAVEL 1400-623-7518	DEARBORN HEIGHTS SCOTT'S TRAVEL 27354 W. Warren 277-3800	FARMINGTON HILLS CAROUSEL TRAVEL 24347 Highland Farmington Hills, MI 48018 477-8200	LIVONIA COMPLEXTON TRAVEL SERVICE 4212 Orchard Lake Rd. 352-1111	WEST BLOOMFIELD ELGIN TRAVEL WEST BLOOMFIELD INC. 6714 Orchard Lake Rd. 525-9750
BLOOMFIELD HILLS BLOOMFIELD TRAVEL SERVICE 1530 N. Woodward Bloomfield Hills, MI 48301 644-8730	DETROIT AREA HUDSON'S TRAVEL SERVICE 585-8020 WESTLAND... 585-8183 ANN ARBOR... 994-0085 EASTLAND... 621-4340 "See Your Hudson's Shopping Card"	FARMINGTON HILLS HUNTER'S SQUARE TRAVEL AT TALLY HALL 31225 Orchard Lake Rd. 855-3200	PLYMOUTH Emly's World 704 S. Main Plymouth 455-5744	WESTLAND Warren at Venice Westland 455-5834
CANTON HARVARD SQUARE TRAVEL 6046 Sheldon Road New Port Road Canton, MI 48107 453-7010	TROY 585-8020 WESTLAND... 585-8183 ANN ARBOR... 994-0085 EASTLAND... 621-4340 "See Your Hudson's Shopping Card"	FARMINGTON HILLS TRANS GLOBAL 30400 Northwestern Blvd. 303 N. Valley Office Center 851-2132	SOUTHFIELD Greatways 355-1400	SAMSON TOURS