

Book gives garden plan help

At this time, you are probably satisfied with many of your garden projects, but restless to improve your basic garden plan.

I have come across a book which will be invaluable for a practical help, "The Golden Book of Gardening," Horticultural Associates, Inc., Western Publishing Company, Racine, Wisconsin, \$14.95, 309 pages.

This is a thick publication with hundreds of colored pictures and instructions for specific uses of plants. At the time the material was being gathered for publication, the photographer came to our area and took many pictures to illustrate the lessons in plant selection.

I noticed two pictures from Cranbrook, but the majority of the illustrations are of plant material and their use. This is an excellent guide for landscape people in the selection of proper plants for designs. How I wish I had a publication like this when I studied landscaping at Michigan State.

In 1854 the Burlingame farm house was erected on Joy Road in Ann Arbor. A recent

stop at the site showed that the current owner has added solar heating and new insulation to carry the proud farm house through many years ahead.

When we plant trees to glorify a homestead, we should know that years and years ahead, these trees will majestically stand and proudly proclaim the foresight of the initial occupant. This symbol of a plant says, "I have cared and watched over this family for many years."

If you examine the soil in your garden and it seems too sandy, add leaves to the mix. If your soil has too much clay, mix in sharp sand which comes out of the earth and not a lake. In this instance humus could be added to the clay to improve its value.

Nobody needs to feel that a garden club has a dull program when its members can hit some of the following types of presentations: "New Publications," "Clive Garden Planning and How to Improve It," "Purchase Research on Interesting Plants," "Interesting Ways to Display House Plants,"



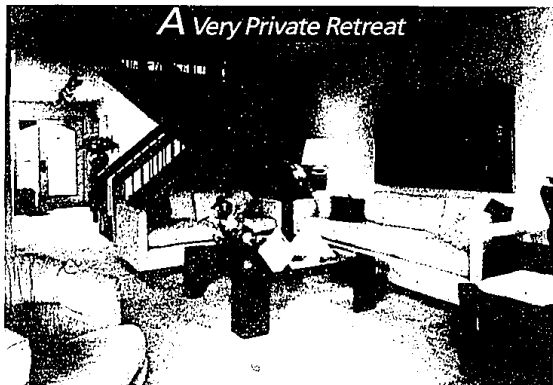
down to earth
Alice
Burlingame

"Fluorescent Light for Plants Using Unusual Approaches," "Pruning Plants Indoors and Outdoors," and "Disease Control."

Other possible topics are: "Propagating Your Indoor and Outdoor Plants to Share with Others," "Bulbs for All Seasons," "Unusual Plant Containers," "Places to Visit to Increase Your Plant Knowledge" and "What's New in the Plant World."

Information from the Horticulture Department, Michigan State University, writing your favorite seedsman may help.

These ideas are shared to assist our many garden clubs in keeping up to date in the world of plants.



A Very Private Retreat

With Bingham Woods Condominiums, Robertson Brothers Co. has succeeded in providing an architectural style which complements the area's natural beauty. Cedar siding, rustic brick exteriors and open, spacious living areas all contribute to the tranquil, country setting.

But for many, the real beauty of Bingham Woods is the quality of life it affords to residents, selecting a lifestyle that says, "you've arrived."



Priced from \$178,900.
For more information,
call 645-6240 or ask your Realtor.

Bingham Woods
by Robertson Brothers Co.

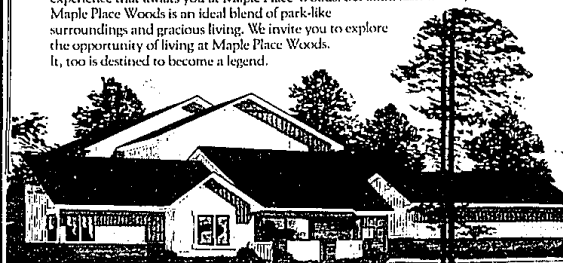
Rb ROBERTSON BROTHERS CO. RESIDENTIAL BUILDERS

ANNOUNCING... THE PREVIEW SHOWING OF ANOTHER LEGEND.

NOTICE:
PHASES I & II
SOLD OUT!
NOW TAKING
RESERVATIONS FOR
PHASE III.

Once again, Classic Construction has created an environment of incomparable beauty at a price unrivaled in all of West Bloomfield.

Those families who were fortunate enough to purchase a home at our first condominium community, Maple Place, will tell you the delightful experience that awaits you at Maple Place Woods. Set amid lush woods, Maple Place Woods is an ideal blend of park-like surroundings and gracious living. We invite you to explore the opportunity of living at Maple Place Woods. It, too is destined to become a legend.



Custom Designed 2 & 3 Bedroom Condominiums
in a tranquil woodland setting in
prestigious West Bloomfield.

All homes feature basements, utility rooms and two car attached garages. Some units include a loft with a third bath.

Priced from
\$85,500.



CONVENT ROAD - CLIVEDALE THURSDAYS
11 AM - 1 PM
11500 Rd. and Maple Rd.

**MAPLE PLACE
WOODS**

A custom 2 & 3 bedroom condominium community.

A development of The Classic Construction Corporation
21177 Hilltop Road
Southfield, Michigan 48034
Office Phone: 358-5213

Model Home:
553-9855



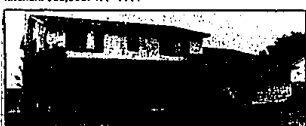
LOCATION - LOCATION in Farmington Hills, 5 bedroom quad level, walkout basement, huge corner lot, super deck off family room, close to expressways and shopping, excellent schools. \$110,000. 477-1111



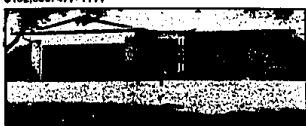
MEADOWHILLS ESTATES 4 bedroom, 2 1/2 bath Colonial on commons. 2 fireplaces (one in master bedroom). Family room, kitchen and large dining room at rear. \$124,500. 477-1111



100 YEARS YOUNG. Charming historic home in Farmington, 3 bedrooms, 2 baths, family room with fireplace and sliding glass doors to English rock garden. Large modern kitchen. \$85,000. 477-1111



GORGEOUS COLONIAL. Large kitchen with breakfast nook, 1st floor laundry, in-ground sprinkler system in desirable subdivision which has swimming pool, tennis courts. \$132,500. 477-1111



SHARP 3 BEDROOM RANCH on well landscaped lot, country kitchen, family room, Florida room. Possible fourth bedroom in basement. \$69,500. 477-1111



NEW CONSTRUCTION. Four bedroom Tudor Colonial in lovely Lakes of Northville. Purchase now and pick out flooring, ceramic and colors. Priced below other homes in subdivision. Builder wants to clear inventory. Hurry! \$138,900. 851-1900



SMASHING CONTEMPORARY in Holly Hills Subdivision. Unique floor plan offers spacious family room, beamed cathedral ceilings, 2 fireplaces and more. Treed lot offers privacy and natural beauty. \$114,800. 851-1900



QUAD LEVEL home on 1.93 acres. 5 bedrooms, 2 1/2 baths. Great recreational area for family. \$98,000. 348-6430



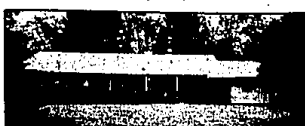
SPANISH QUAD. Done to perfection, circular drive, professionally landscaped, backs to commons, 4 bedroom, wet bar in family room, central air, air purifier and much more. \$144,900. 851-1900



AN ARCHITECT'S DREAM. An exciting design and superb floor plan combined with a ravine setting is a knock-out combination. This custom quality built ranch with walk-out has 4 bedrooms, 3 baths, 3 fireplaces and more. \$175,900. 681-5700



COUNTRY LIVING IN CITY. A lovely 3 bedroom ranch set on 1.85 acres. One and a half baths. Fireplace in living room. 1 1/2 car attached garage. \$74,900. 659-2300



NICE COUNTRY SETTING. 3 bedroom ranch on large treed lot. Fireplace, marble slabs, partly finished basement with wet bar, private office and lots of storage. \$74,900. 659-2300

**America's Corporations
trust us...
you can too!**



The Corporate Services
Division of Real Estate One
is recognized across the
country as our professional
services are utilized by over
115 major corporations and
most major Third Party
Companies.

Real Estate One's
membership is RELO, the
largest independent referral
network in the country
provides us with a constant
flow of buyers.

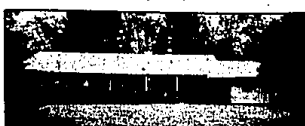
FREE*
Pre-licensing classes
starting soon
*small materials charge



WEST BLOOMFIELD. Fox Run Green. 4 bedroom, 2 1/2 bath Colonial located in a great family neighborhood. Spacious family room, central air, decorated in neutrals. A great value. \$90,500. 851-1900



IMPRESSIVE 4 bedroom Colonial in prestigious Turtle Creek. Ceramic foyer and spiral staircase greet you. Natural fireplace in family room. Crown moldings. Beautifully maintained. Fenced yard. \$125,900. 348-6430



NICE COUNTRY SETTING. 3 bedroom ranch on large treed lot. Fireplace, marble slabs, partly finished basement with wet bar, private office and lots of storage. \$74,900. 659-2300