



## Fiber artist exhibits work

Sculptural tapestries by Ann Savell of Birmingham are on display at Birmingham Unitarian Church, 651 Woodward, Bloomfield Hills, through September. Her works, as shown in the photograph, are often the focal point of residential and commercial interiors. Among her many commissions are National Bank of Detroit, Pontiac General Hospital, Immont Technologies and Yamaha of Tokyo. The exhibit is open to the public 1-5 p.m. Sundays.

## Ensemble opens season

The Lyric Chamber Ensemble opens its sixth season of chamber music at the Edsel and Eleanor Ford House, 1100 Lakeshore Drive, Grosse Pointe Shores, with "Viennese Coffeehouse Concert" at 8:30 p.m. Sunday.

Compositions by Johann Strauss Jr. are the concert highlights, including "Wine, Women and Song," "The Emperor Waltz," "The Vienna Woods Waltz," and arias from "Die Fledermaus." Schubert's "Five German Dances" and "Minuet and Trio for String Quartet" will also be performed.

Scheduled performers are Detroit Symphony Orchestra members Ronald Fischer, violin; Stacey Woolley, violin; Darryl Jeffers, viola; Carol Gatwood, cello; Shaul Ben-Meir, flute; and Douglas Cornelius, clarinet. Other performers are soprano Earnestine Nimmons, soprano, and Fedora Horowitz, piano. Nimmons is a member of the "Brazel Dendard Choral," and has per-

formed with the Lyric Chamber Ensemble since 1980. Horowitz, a Southfield resident, artistic director of the Ensemble, was recently named an affiliate faculty member of Wayne State University's music department.

Tickets for "Viennese Coffeehouse Concert" are \$8, \$6 for senior citizens and students. They are available in advance or at the door; Visa and MasterCard are accepted for phone orders. Ticket price includes informal tour of the Ford House and afterglow wine and cheese reception.

Wheelchair seating and handicapped assistance are available. Call 357-1111 for ticket information.

Lyric Chamber Ensemble concerts are in association with WQRS-FM 105 and are made possible in part by grants from the National Endowment for the Arts, Michigan Council for the Arts and Michigan Foundation for the Arts.

# Century 21

NORTHWESTERN  
26313 West Twelve Mile Road  
Southfield, Michigan 48034

313-827-7750



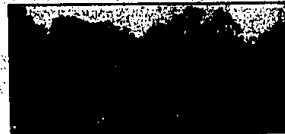
### LUXURIOUS LIVING

- 5 bedrooms, 6 full and 2 half baths, 2 decks, 2 fireplaces
- 3 levels of extraordinary living with an indoor pool and 2 jacuzzis
- Cul-de-sac location in Wakefield with Bloomfield Hills schools . . . . . \$750,000



### ELIZABETHAN CLASSIC WITH CONTEMPORARY FLAIR

- 4 bedrooms, 2 1/2 baths, gourmet kitchen, upper level laundry, finished basement with kitchen. Designer's own home
- Secluded parklike setting with skylights, windows and doorways to enjoy the view
- Custom ceramics, mirror and built-ins . . . . . \$284,500



### PRIME FRANKLIN LOCATION

- Sprawling 4 bedroom, 4 bath ranch on almost 2 acres, plenty of room for a tennis court
- Family room with fireplace and wet bar, huge rec room with lots of storage
- Cul-de-sac location, Birmingham schools
- Many extras . . . . . \$139,900



### POPULAR LINCOLNSHIRE SUB.

- 4 bedroom, 2 1/2 bath colonial with fireplace in family room and doorwells out to deck
- Newly tiled kitchen, finished basement with wet bar, first floor laundry
- Open floor plan . . . . . \$119,000



### PRICED TO SELL

- Spectacular 4 bedroom, 1 1/2 bath colonial on beautiful lot
- Cozy family room with fireplace and finished basement with brick fireplace and slate raised hearth
- Motivated seller, possible Land Contract
- Birmingham schools and only . . . . . \$82,900



### OPEN FLOOR PLAN

- 3 bedroom, 2 1/2 bath ranch with country kitchen
- Family room with brick fireplace, finished basement with kitchen and bath
- Patio overlooks beautifully landscaped yard . . . . . \$99,900



### LOTS OF PRIVACY

- Townhouse end-unit with private courtyard entry and attached garage
- 2 bedrooms, 1 1/2 baths, formal dining area, finished rec room with bar
- Move in condition . . . . . \$72,900



### ONE OF FEW

- 3 bedroom, 2 1/2 bath homes in area
- Formal dining room, large kitchen, family room with brick fireplace and slate raised hearth
- Fenced yard with above ground pool and mature landscaping . . . . . \$98,480



### GREAT FAMILY HOME

- 4 bedroom, 1 bath tri-level with family room
- Pretty landscaping and fenced yard
- Neutral and contemporary decor
- First floor laundry and loads of storage space . . . . . \$44,900

Put Number 1 to work for you.

Equal Housing Opportunity  
INDEPENDENTLY OWNED AND OPERATED



BLOOMFIELD 4 bedroom contemporary large open foyer, studio ceilings, marble, oakwood and beveled mirrors used thru-out. Possible in-law suite. Multi-level patio to heated pool in private treed setting. \$254,900  
EKR/BIRMINGHAM 645-5800



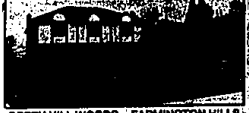
BLOOMFIELD - 4 wooded acres are a perfect setting for this custom rustic contemporary 3 bedroom, 2 1/2 bath home. Many extra features: 1st floor master suite, gourmet kitchen, 2 story entry and living room are just a few. Extensive use of oak and ceramic tile. \$325,000  
EKR/BIRMINGHAM 645-5800



FRANKLIN SECLUSION AND BEAUTY. Birmingham Schools. 3 bedroom, 2 bath ranch on magnificent treed lot. Large fireplace, new formal kitchen, oversized covered porch with slate floor, neutrals. Land Contract assumable at 10%. \$169,900 BR  
EKR/WEST BLOOMFIELD 855-9100



"BINGHAM FARMS" Lovely 3 acre estate, rear of property wooded and hilly, Franklin River winds through property. Lower level/ walk-out from family room and library. Loads of extras, excellent terms. call for details. \$214,900 BR  
EKR/MAPLE 642-6500



GREEN HILL WOODS—FARMINGTON HILLS Beautifully appointed 4 bedroom, 2 1/2 bath brick colonial offers family room with fireplace, formal dining room, library, 1st floor laundry, attached garage, basement and much more. Transferred owner asking only \$149,900.  
EKR/MIDWEST, INC. 477-0880



OPEN SAT. & SUN. 2-5  
(N. of 13, E. of Haggerty on  
Lawrence to Knighton)  
NEW CONTEMPORARY Cape Cod, situated on premium lot. Featuring 3 spacious bedrooms, great room, children's playroom, library, formal dining room. Excellent floor plan - designed for today's lifestyle. A Must See One Of A Kind. Asking \$199,500  
EKR/BIRMINGHAM 645-5800



EXCEPTIONAL WOODED LOT. Desirable West Bloomfield Sub. 4 bedrooms, walk-out family room to secluded treed yard. Enclosed porch, oversized garage, much more. Call for details. Just offered at \$129,900. ST  
EKR/WEST BLOOMFIELD 855-9100



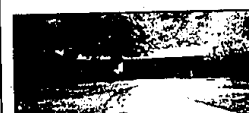
MOVE IN CONDITION distinguishes this lovely 4 bedroom, 2 1/2 baths, Beverly Hills colonial. First floor laundry and well planned placement of family room contributes to great living style. Don't miss. \$149,900 BE  
EKR/MAPLE 642-6500



FIRST FLOOR MASTER SUITE. Excellent floor plan. Upper level sitting room overlooks cathedral ceiling living room. Teen suite on 2nd floor. Zoned heat and air conditioning. Immediate occupancy. \$214,900 FA  
EKR/MAPLE 642-6500



EXECUTIVE RANCH—FARMINGTON HILLS Lovely neutral decor highlights 3 bedroom, 2 1/2 bath brick ranch. Family room with fireplace, formal dining room, attached garage, basement and large lot in most prestigious North Farmington Hills location. Asking \$119,900.  
EKR/MIDWEST, INC. 477-0880



CONTEMPORARY brick ranch on nearly an acre in Beverly Hills. Many customer features: slate entry, plaster walls, 2 zone radiant heat. Oak paneled family room with wet bar, 2 1/2 car garage, 20 x 40 heated pool with cabana. Birmingham schools. \$129,850  
EKR/BIRMINGHAM 645-5800



QUALITY AND PERFECTION in this 4 bedroom, 3 1/2 bath home. Wooded lot surrounds deck, fireplace, 4 bedrooms, 2 1/2 baths, 2 car garage, 1st floor laundry. West Bloomfield schools, much more. Asking \$135,900. GR  
EKR/WEST BLOOMFIELD 855-9100



COUNTRY BETTING. Birmingham Schools. Ideal family home. 5 large bedrooms. 3 full baths, master suite with built-in make up area. Double walk-ins, maid quarters off kitchen. Priced to sell \$149,900. ST  
EKR/MAPLE 642-6500



SHARP CONTEMPORARY. Custom home with great room, family room plus library. Handsome deck. Zoned heat and air. Finished lower level. All this and neutral decor move-in, call for appointment. \$455,000 PO  
EKR/MAPLE 642-6500



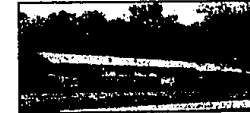
DRASTIC REDUCTION—FARMINGTON HILLS Beautifully decorated 3 bedroom brick ranch offers family room, modern kitchen with large eating area, 1 1/2 baths, basement, garage and great family sub. Just reduced to only \$62,900.  
EKR/MIDWEST, INC. 477-0880



BLOOMFIELD, 4 bedroom pillared colonial, Bloomfield Hills Schools, 1st floor den and laundry, Family room has fireplace with raised brick hearth. \$127,900  
EKR/BIRMINGHAM 645-5800



BEAUTIFUL GOLF COURSE SETTING. Stunning colonial, tastefully decorated. Open floor plan, fireplace, 4 bedrooms, 2 1/2 baths, 2 car garage, 1st floor laundry. West Bloomfield schools, much more. Asking \$135,900. GR  
EKR/WEST BLOOMFIELD 855-9100



LOVELY, QUALITY BUILT Brick Ranch. Excellent location in West Beverly Hills. Finished lower level with recreation room, wet bar, gas fireplace and additional bedroom. Great room with 1 1/2" oak paneling, stone fireplace. Move-in condition. \$157,500 BR  
EKR/MAPLE 642-6500



"SPECTACULAR" is the only way to describe this classic Tudor. Built in exclusive Echo Park, this home blends old world traditional elegance with new world inspiration. Just see property. Open Sunday 1:00 to 4:30 \$880,000 CO  
EKR/MAPLE 642-6500



SIMPLY SPLASHING—FARMINGTON HILLS In-ground pool highlights spacious 4 bedroom brick ranch. Family room, fireplace, attached garage, central air, newer roof and furnace and many extras. Asking \$119,900.  
EKR/MIDWEST, INC. 477-0880



BIRMINGHAM  
OFFICE  
1955 S. Woodward Ave.  
645-5800

WEST BLOOMFIELD  
OFFICE  
5535 W. Maple Road  
855-9100

MAPLE  
OFFICE  
3605 W. Maple of Lusher  
642-6500

FARMINGTON  
OFFICE  
81718 Grand River  
477-0880

