



The double front door of the "Galleria," built by Robert R. Jones Associates, opens to two-story, circular foyer with a black and white Italian marble floor and circular stairway which leads to a banistered balcony. The house is 4,500 square feet.

Homearama '86

Builders showcase their best

Talk about a big open house party, "Homearama '86," which opens today, is the most impressive so far in terms of size, price and scope.

This event, third of its kind, sponsored by the Builders Association of Southeastern Michigan, features 14 model homes in the \$100,000 to \$500,000 range. These completely furnished models showcase not only the best efforts of architects and builders, but the latest and most lavish in furnishings, fixtures and technology.

Styles vary from the nine-room "Sun Villa" by James D. Campo Inc. with a passive solar sun room and secluded master suite with loft to Peg Construction's Tudor English, "The Heritage," with paneled oak library and John Richard Development Company's three-floor, 12-room "Kingswood," with an all glass triangle breakfast room and 22 skylights.

Outstanding extras include such things as

a two-person indoor whirlpool tub and outdoor jet-pool with jetsreams for swimmers to stroke against in Robert R. Jones Associates' "Galleria"; enclosed morning garden room in Cranlie, Inc.'s "Royal Topaz"; and the kitchen with the greenhouse effect window, in Dakota Building's "The Ashby."

HOMEARAMA '86 may have revived the Italian marble business, it's used generously in many of the houses. And gracious stairways never had it so good. Dave Kellett of Kellett Construction Co. has twin stairways in the domed ceiling foyer of his Corinthian-columned "Chesapeake." Great setting for a wedding or a debut.

Elaborate crown, door and window molding can be found in abundance. And glass is etched, stained, leaded, beveled, shaped, curved and, in most instances, is both functional and decorative.

Book sellers will delight in the number

and size of the libraries and spa people will smile approvingly, for saunas, exercise areas and whirlpools, rise to a new level of importance.

The master bathrooms are as big as the living rooms of medium priced homes, and the master suites as big as a lot of starter homes.

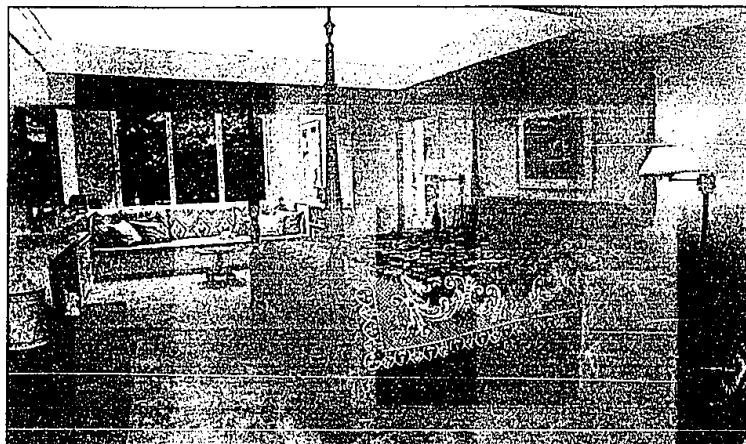
Homearama '86 runs through Oct. 20. Hours are noon to 11 p.m. Monday-Friday and 10 a.m. to 11 p.m. Saturday and Sunday. Admission is \$4, but discount coupons are available at First Federal of Michigan offices and Detroit Edison.

A display area with information on home financing, heating and cooling and many aspects of construction, will be set up for visitors.

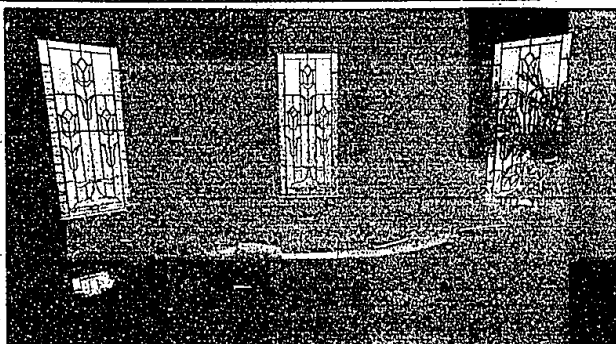
"Homearama '86" is in Chestnut Run subdivision, north of Hickory Grove between Lahser and Telegraph, Bloomfield Hills. Wear walking shoes.



Palladian windows, deep molding, bright red walls and elegance that crosses centuries to become part of to-lively red and green chintz give the great room of Kellett day's lifestyle. Construction Company's "Chesapeake," a sparkling el-



Master bedroom of the "Chesapeake," above, is 18th century in style and 21st century in conveniences. The wool coverlet on the king-size bed is blue and white, the carpet rose and the two colors used throughout the room. The master bathroom at right, one of the most beautiful in the show, is in Peg Construction's "The Heritage." It is done in shades of cream with gold fixtures. It is octagon shape with a beamed ceiling. There is a built-in vanity and mirror on three of the eight sides.



The family room of "Chestnut Manor" by Bing Construction Company has a contemporary look. Basic colors are taupe and black with matching oriental pattern chintz for the drapes and straight chairs. The 5,000 square foot house has 10 rooms.

Staff photos by Mindy Saunders and Jerry Zolynsky