

exhibitions

• **DETROIT PUBLIC LIBRARY**
Thursday, Oct. 10 - "Unknown Landmarks," photographs of the changing urban environment by Carlos Diaz continue on display through Nov. 6. Reception 5:30-7:30 p.m. Saturday, 5201 Woodward Ave., Detroit.

• **YAW GALLERY**
Thursday, Oct. 10 - A selection of pearls from Japan and the South Sea, and a selection of clasps designed at the gallery's request by Whitney Boin, Falk Burger, Charles March, C. James Meyer, Richard Robinson and Jan Yager. Continues through Oct. 17. Hours are 11 a.m. to 5 p.m. Tuesday-Saturday, 550 N. Woodward, Birmingham.

• **DETROIT FOCUS GALLERY**
Friday, Oct. 11 - "Artists to Watch," group exhibition with works by Ruth L. Lampkins, Don Shields, Patricia Soderberg and Raymond Wezel. Reception 6-8 p.m. Friday. Continues through Nov. 9. Hours are noon to 6 p.m. Wednesday-Friday, 743 Beaubien, Detroit.

• **COMMUNITY CONGREGATIONAL CHURCH**
Friday, Oct. 11 - Art show and sale with many area artists participating. Continues through Saturday. Hours are 10 a.m. to 5 p.m., 27800 Southfield, Lathrup Village.

• **PAINT CREEK CENTER FOR THE ARTS**

Saturday, Oct. 12 - Michigan Weavers Guild will have a fall show and sale. Continues through Nov. 9. Reception 7-9 p.m. Saturday. Regular hours are 10 a.m. to 5 p.m. Tuesday-Saturday, 407 Pine, Rochester.

• **PONTIAC ART CENTER**
Saturday, Oct. 12 - Michigan Architecture in Photography, a juried show runs through Nov. 9. "Residences," oil paintings by Corinne M. Gignac in the Clerestory Gallery. Reception 6-8 p.m. Saturday, 47 W. Williams, Pontiac.

• **BIRMINGHAM BLOOMFIELD ART ASSOCIATION**
Saturday, Oct. 12 - "Bazaar," an art bazaar continues through Sunday. Saturday hours are 11 a.m. to 8 p.m. and Sunday hours are noon to 5 p.m., 1516 S. Cranbrook, Birmingham.

• **BLOOMFIELD FINE ARTS**
"Autumn Into Winter," exhibit of oils and watercolors of the seasons, continues through December. Hours are 10 a.m. to 6 p.m. Tuesday-Saturday, until 8 p.m. Thursday and Friday, 280 N. Woodward, Birmingham.

• **WILD WINGS**
Sunday, Oct. 13 - Wildlife artist, Robert Bateman, will at the Plymouth Colony 4-8 p.m. to sign copies of his new book, "The World of Robert Bateman, 975 Ann Arbor Trail, Plymouth.

• **HENRY FORD COMMUNITY COLLEGE**
Monday, Oct. 14 - Photographs from the collections of Steven Benson, James Crawford and Carl Toth are on display through Nov. 1 in the Sisson Gallery of the Fine Arts Building, 5101 Evergreen, Dearborn. Closed Saturday and Sunday.

• **SOUTHFIELD CULTURAL ARTS GALLERY**

Wednesday, Oct. 16 - Paintings by Jean Marie McKnight continue on display through the month. Hours are 9 a.m. to 9 p.m. Monday-Friday, until 4 p.m. Saturday, Parks and Recreation Building, 25000 Evergreen, Southfield.

• **DONNA JACOBS GALLERY**
Exhibit of Greek, Roman, Egyptian, Etruscan, Near Eastern and Pre-Columbian works. Hours are 11 a.m. to 5:30 p.m. Tuesday-Saturday, 574 N. Woodward, Birmingham.

• **PARK WEST GALLERIES**
Lithographs and etchings by Harold Altman are on display through Oct. 20. This comprehensive show of the works by a major artist has been extended. Hours are 10 a.m. to 6 p.m. Monday-Wednesday, until 9 p.m. Thursday and Friday and 11 a.m. to 6 p.m. Saturday and Sunday, 29469 Northwestern, Southfield.

• **PETERBORO**
- Geometric representations of urban landscapes and city dwellers by Susan Logan will be on display through Oct. 26. Hours are 2-6 p.m. Thursday-Saturday, 55 Peterboro, two blocks south of Mack between Woodward and Park Avenues, Detroit.

• **TROY ART GALLERY**
- Watercolor collage by Edee Joseph and wildlife stoneware by Marilyn Richards are on display through Oct. 26. Hours are 11 a.m. to 6:30 p.m. Tuesday-Saturday, 755 W. Big Beaver, Troy.

• **SHELDON ROSS GALLERY**
- Exhibit of drawings by John Sloan, member of the American "Ashcan School." Many, just released from the estate, have never been shown before. Sloan taught at the Art Students League in New York in 1916. Many of these are nudes; for others Sloan focused on dance halls, row houses, backyards and saloons. Continues through Nov. 3. Hours are 11 a.m. to 6 p.m. Tuesday-Saturday, 250 Marlin, Birmingham.

• **HABATAT GALLERIES**
Glass by many of the faculty of the Pichuck School and other outstanding artists continues through Oct. 26. Regular hours are 10 a.m. to 6 p.m. Tuesday-Saturday, until 9 p.m. Friday, 28235 Southfield, Lathrup Village.

• **VENTURE GALLERY**
- Raku-fired vessels by Rick Fortis are on display through Oct. 26. Hours are 10 a.m. to 6 p.m. Tuesday-Saturday, until 9 p.m. Friday, 28235 Southfield, Lathrup Village.

• **LAWRENCE INSTITUTE OF TECHNOLOGY**

"American Architecture: Innovation & Tradition," photo exhibit organized and circulated by the American Institute of Architects Foundation, seeks to identify what is uniquely American in architecture. Continues through October, 8 a.m. to 5 p.m. Monday-Friday, 5-9 p.m. Thursday, Oct. 10 and Thursday, Oct. 31. Architecture Gallery, 21000 W. 10 Mile, Southfield.

• **MEADOW BROOK ART GALLERY**
"From the Collection of Sol LeWitt" continues through Nov. 17. Hours are 1-5 p.m. Tuesday-Friday, 5-8:30 p.m. Saturday and Sunday and evenings when there's a theater performance across the hall, Oakland University, Rochester.

• **HOODERMAN GALLERY**
"Collectible Coverings V" features work by 70 artist/designers. Hours are 10:30 a.m. to 5 p.m. Tuesday-Saturday, 155 S. Bates, Birmingham.

• Paintings by three artists, Robert Edwards, Mark Gauthier and James Kirchner, are on display through Nov. 2. Hours are 1-3:30 a.m. to 7 p.m. Tuesday-Saturday, 2100 North St., Royal Oak.

• **GALLERY BIRMINGHAM**
Latest cast paper works by Frank Gallo. "Young Pianist," a cast paper portrait of Beethoven, is the first of three commemorative works by Gallo. The sale of them will benefit the Beethoven Foundation career development fellowships for young American pianists. Gallo's other new work, "The Bending," is also on display along with works by Linda Golden, Susan Thomas, Sharon Tuleen, Sophie Rivkin, Norita Frcka, Diane Zeeb, Peggy Hopper, Frank Rowland, Ron James, Marilyn Derwenasky, Jean-Marie McKnight and Lee Shapiro. Hours are 10 a.m. to 5 p.m. Monday-Saturday, until 10 p.m. Thursday and Friday, 223 S. Woodward, Birmingham.

• **SOMERSET MALL**
Thursday, Oct. 10 - Seventh annual weaving exhibit by the Fiber Group continues through Oct. 20. The five original members of the Fiber Group invited five other professionals in the field to join them to offer lots of variety within the realm of textiles. Open free of charge with regular mail hours, Big Beaver at College, Troy.

• **TOWN CENTER GALLERY**
Works by more Brazilian artists including Iglesias, Guilherme, Renata and others, are featured through October. Hours are 10 a.m. to 5:30 p.m. Monday-Friday, 11 a.m. to 4 p.m. Saturday, 3000 Town Center, Southfield.

• **SHOWCASE DUGLASS**
Paintings, bronzes and ceramics by Umberto Del Negro are on display in Restaurant Duglass through Oct. 21. Open free of charge, 29269 Southfield Road, Southfield.

• **THE COMMUNITY HOUSE**
Watercolors by Julie Dawson are on display through Oct. 18. Many of her works were inspired by her travels to China and Africa. She's also a great student of flowers. 380 S. Bates, Birmingham.

• **FEIGENSON GALLERY**
Opening show of the fall season, "From Detroit: 1985" features work by Cay Bahamiller, Betty Brownlee, Glenn Booth, Tom Ellis, Diane Carr, James Chastain, Georg Ertl, Steve Foust and many more. Continues to Nov. 2. Hours are 11 a.m. to 5 p.m. Tuesday-Saturday, 310 Fisher Building, Detroit.

• **ROBERT L. KIDD ASSOCIATES**
- Ceramic structures by Rina Penev and new paintings by Adria Aronow and Chung Cho continue through Oct. 26. Hours are 10:30 a.m. to 5:30 p.m. Tuesday-Saturday, 107 Townsend, Birmingham.

• **SUBANNE HILBERRY GALLERY**
- New works in glass by Lynda Benglis continue through Oct. 26. Hours are 11 a.m. to 5 p.m. Tuesday-Saturday, 555 S. Woodward, Birmingham.

• **HALSTED GALLERY**
Photographs by Irving Penn are on display through Nov. 23. Penn is one of the most distinguished portrait and fashion photographers of the last four decades, 560 N. Woodward, Birmingham. Regular hours are 10 a.m. to 5:30 p.m. Tuesday-Saturday.

• **ALICE SIMGAR GALLERY**
New works by Garo Antrestian, Ellen Stavitsky and Vasa are on display through October. Hours are 10 a.m. to 5:30 p.m. Tuesday-Saturday, 301 N. Main, Ann Arbor.

• **PRINT GALLERY**
"Billboards, Bach and Brownies" continues through November. It's an exhibit of European and American billboard posters. They are dramatic examples of works by Moche, Manet, Laurence, Lichtenstein and others. Regular hours are 10 a.m. to 5 p.m. Monday-Saturday, until 9 p.m. Thursday, 22203 Northwestern, Southfield.

• **DETROIT GALLERY OF CONTEMPORARY CRAFTS**
"Clothes for the Collector" is the sixth annual seasonal invitational. Jewelry and accessories are part of the exhibit. Continues through Oct. 12. Hours are 11 a.m. to 5 p.m. Monday-Saturday, 301 Fisher Building, Detroit.

• **RUBINER GALLERY**
Works on paper includes works by 14

internationally known American and European artists such as Motherwell, Moore, Delaunay, Diebenkorn, Sumner, etc. Hours are 10 a.m. to 5:30 p.m. Tuesday-Friday and until 5 p.m. Saturday, 1901 Orchard Lake, Suite 430A, West Bloomfield. Coolidge, Berkeley.

• **CRANBROOK ACADEMY OF ART MUSEUM**
"Land Marks" and "Contrasts," exhibits of contemporary sculpture continues through Oct. 27. Among the sculptors represented in "Land Marks" are Robert Stackhouse, Dennis Oppenheim and Alice Aycock who have done environmental sculpture for Cranbrook. "Contrasts: Contemporary Sculpture from Cranbrook Collectors" draws outstanding pieces from local collections. Hours are 1-5 p.m. Tuesday-Sunday, 500 Lone Pine, Bloomfield Hills.

• **PHYLLIS KRAUSE GALLERY**
Papier mache from Kashmir, hand-painted silks in yardage lengths, bead-necklaces from Nagaland, stichery from the hill tribes of Thailand, textiles from Indonesia, puppets from Burma

and Thailand and antique carvings from the Philippines. Hours are 11 a.m. to 5 p.m. Tuesday-Saturday, 29 W. Lawrence, Pontiac.

• **FLINT INSTITUTE OF ARTS**
Photography by Miles White, organized by the Philadelphia Museum of Art, will be on display through Dec. 2. Hours are 10 a.m. to 5 p.m. Tuesday-Saturday, 1-5 p.m. Sunday, 1120 E. Kearney, Flint.

• **PIERCE STREET GALLERY**
Photographs by Marion Post Wolcott and Jack Delano, both of whom worked for the FSA, Farm Security Administration, will be on display through Nov. 1. Both photographers traveled, mostly in the south in the years from 1938 to 1943 photographing the life of the farm workers. Hours are 11 a.m. to 5 p.m. Wednesday-Saturday, 217 Pierce, Birmingham.

• **SELIAN ART CENTER**
Paintings and sculpture by Edward Avedalian will be on display through October. His work is in the collections of the Museum of Modern Art, the Guggenheim, the Metropolitan Museum, the Whitney, and many others. The gallery is at 580 Rochester Road, Troy.

• **MAIN STREET GALLERY**
"Ecoart" features works by Casadi-an artist, Terry Geller. In his works of conte, watercolor and pastels, the artist presents a world to excite the imagination and the senses. Hours are 10 a.m. to 5 p.m. Tuesday-Saturday, until 9 p.m. Thursday and Friday, 903 N. Main St., Royal Oak.

• **RESTAURANT DUGLASS**
Works by Italian artist, Umberto del Negro are on display through Oct. 15, 29169 Southfield Road, Southfield.

• **DETROIT INSTITUTE OF ARTS**
"Ancient Art of the American Woodland Indians" continues through Nov. 10. It includes 150 masterworks of stone sculpture, ceramic arts, copper tools, weapons, ornaments and ceremonial objects from this Native American group. 10 a.m. to 5 p.m. Tuesday-Saturday, 5200 Woodward Ave., Detroit.

• **OAKLAND COUNTY GALLERY**
Watercolors and sketches of Africa by Julie Dawson will be on display through Oct. 15. Open 9 a.m. to 5 p.m. Monday-Friday, Executive Office Building, 1200 N. Telegraph Road, Pontiac.

• **JOSEPH HUR GALLERY**
This new gallery handles works by both international and local artists. It is artist-owned and operated. Hours are 10 a.m. to 8 p.m. Monday-Saturday, Orchard Mall, Maple and Orchard Lake roads, West Bloomfield.

• **DUKE GALLERY**
Art Nouveau and Art Deco pieces in ceramic and glass as well as a collection of chandeliers are on display. Hours are 11:30 a.m. to 6 p.m. Monday-Wednesday, until 8:30 p.m. Thursday, Friday and until 5 p.m. Saturday, 165 N. Woodward Ave., Birmingham.

• **XOCHIPILLI GALLERY**
Photographs by Steven Benson are on display through Oct. 12. There are eight hand-colored silverprints - 33 by 40 inches and one larger - in the gallery show. Benson has shifted his attention from ritualistic forest settings to urban sites. He's an outstanding local photographer who graduated from Cranbrook Academy of Art and Center for Creative Studies. He also has an exhibit at Detroit Public Library.

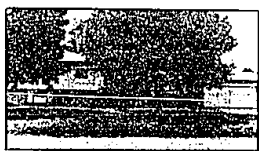
Gallery hours are 11 a.m. to 5 p.m. Tuesday-Saturday, 568 N. Woodward, Birmingham.



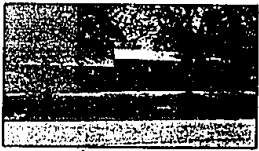
Merrill Lynch Realty



CONTEMPORARY ON BODON LAKE
highlighted by its totally private lot with towering Oaks. Open floor plan, dock, off master bedroom. 626-9100 \$369,900 (CFE)



WELL-MAINTAINED TRI-LEVEL in desirable Old Maple Farms includes family room, hardwood flooring, covered patio. Plenty of storage, lovely yard. West Bloomfield Schools. 851-8100 \$99,900 (TWA)



PRIVATE YARD with lovely Gunite pool gives resort feel to spacious Tri-level. Fireplaced family room ideal for entertaining opens to pool. MUCH MORE. 626-9100 \$123,500 (BFA)



SUPERB COLONIAL on beautifully treed lot features large family room with cathedral ceiling, wet bar. Crown molding, bay window in dining room, large deck. West Bloomfield Schools. 851-8100 \$122,900 (KW)



PICTURESQUE CANAL/RIVER setting with ready access to Cass Lake, includes 2 bedrooms, paneled family room with heater and walk-out to yard. Country kitchen, 2 1/2 car garage, plus beach privileges. 626-9100 \$94,500 (AFU)



BUILDER'S NEW CONTEMPORARY model in West Bloomfield Township offers top-of-the-line appliances plus energy saving features. 4 bedrooms, 2 1/2 baths, Great Room. Carpeted, landscaped, ready for occupancy. 626-9100 \$194,900 (LFE)



FARMINGTON HILLS SCHOOLS. Custom Colonial located on 3 heavily treed lots offers extreme privacy. 4 bedrooms, fireplace, wet bar, stained glass, plus many extras. 626-9100 \$129,900 (MFU)



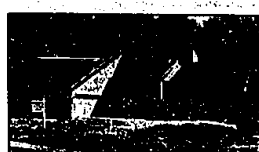
SPRAWLING CONTEMPORARY in prime West Bloomfield location features vaulted ceiling in Great Room, private master bedroom suite. Exciting floor plan, private lot. 626-9100 \$123,500 (BFA)



SPACIOUS FAMILY COLONIAL on private cul-de-sac includes large back yard, library, formal dining, family room. New oven, range, and no-wax flooring in kitchen. 626-9100 \$112,000 (QFL)



FARMINGTON HILLS. Well-constructed Ranch with hardwood flooring features large kitchen, fireplace, living room. Recreation room opens to park-like yard. 626-9100 \$22,000 (QFA)



FABULOUS CONTEMPORARY with Upper Straits Lake privileges. Jacuzzi in master bedroom, ceramic foyer, Great Room leads to spacious deck. Custom kitchen with Jenn-Aire, oak trimmed cabinets, oak flooring. Much more. 851-8100 \$207,500 (RW)



WALK TO ELEMENTARY School from 4 bedroom West Bloomfield Colonial on generous corner lot. Spacious bedrooms, 3 full baths, library off master bedroom. Over 3,000 sq. ft. 851-8100 \$159,900 (BWH)



FANTASTIC CONTEMPORARY on beautifully landscaped lot includes brick foyer, Jenn-Aire range and lovely oak cabinets in kitchen. Custom window treatments. Farmington Schools. 626-9100 \$166,900 (AFF)



LARGE FAMILY COLONIAL with private screened patio is located on lovely treed lot. Cozy fireplace family room, formal dining, library. Farmington Schools. 626-9100 \$107,900 (BPK)



OPEN SUN. 2-5 p.m. 2883 Walco, N. of Square Lake, W. of Middlebelt. Bright 3 bedroom ranch with wonderful floor plan includes spacious family room, private yard and patio. 851-8100 \$58,900 (WWA)

BIRMINGHAM	BLOOMFIELD HILLS	FARMINGTON HILLS	TROY	ROCHESTER	WEST BLOOMFIELD
616-6000	647-5100	626-9100	689-8900	651-8850	851-8100

OPEN MONDAY-FRIDAY 9 A.M. - 5 P.M. SATURDAY 9 A.M. - 5 P.M. OPEN SUNDAY 2-5 P.M.