

A GREAT ASSET — One of the greatest assets of the city is the ice arena at Ford Field. More than

10,000 persons per week enjoy it and the Red Wings use it for practice sessions.

## Recreation Setup 2nd To None

Without much fanfare or bluster the Recreation Dept. of the City of Livonia has grown to a place of prominence second to none in the nation for cities of its size in the few short years of its existence.

From a few make-shift baseball diamonds at the corner of Six Mile and Farmington Rds. and an eight-lane bowling establishment (Livonia Lanes) along with a short 18-hole public golf course at Five Mile and Middle Belt Rds. and the Idyl Wyld layout on Five Mile, it has grown to be the envy of most cities in the state.

It is the only city in the state, and possibly the nation, that has two enclosed ice rinks large enough to stage championship hockey.

The Detroit Red Wings use them for practice when their home ice at Olympia is unavailable and Red Wing General Manager Sid Abel rates the Livonia rinks as the equal of any he has seen anywhere.

ASIDE FROM these, the city acquired Ford Field, on Farmington Rd., more than a decade ago and has built it into an amazing athletic complex. With the Ford Ice Rink on one corner, Ford Field boasts a half dozen baseball diamonds equipped with lights for night competition and they are used all hours of the day and night.

While the old golf course at Five Mile Rd. fell victim to the subdivision developers, the city acquired ground on Eight Mile Rd. and now boasts a well-laid-out municipal course — Whispering Willows. Only a few years old, this course will improve each year.

The lone bowling establishment, pioneered by Clarence M. Hoffman, first director of recreation for the city, has grown from eight lanes to 16 and

has acquired the companionship of three other large establishments — Cloverlanes on Schoolcraft, with 40 lanes; MerrilBowl on Five Mile with 40 lanes, and Wonderland on Plymouth Rd. with 24 lanes.

With this large number of lanes available the city inaugurated an in-school youth bowling program that has become the largest in the country.

Working on the theory that the two most dangerous hours of the day are those between 3:30 and 5:30 p.m., the city organized competition on every available lane.

This league has grown to the point where more than 1,000 children compete and the annual banquet, at which their parents are guests, has been forced into four sections with each establishment sponsoring its own.

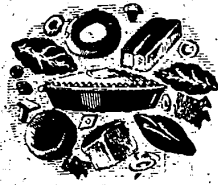
Meanwhile, interest in skating and swimming has brought about a demand for a third arena and plans are being considered for another Olympic-sized swimming pool to add to the city's two now in use.

JUST IMAGINE the change —

1949 — a few make-shift baseball diamonds, two privately owned public golf courses and an eight-lane bowling establishment.

1970 — Two championship-sized ice rinks with a third under consideration — Ford Field with a half dozen lighted baseball diamonds — two Olympic-sized swimming pools with another under consideration — a city-owned 18-hole golf course, and more than 100 privately-owned bowling lanes on which the city sponsors the largest junior league in the country.

That's how far Livonia has come in 20 years. No other city its size can match it.



We've come a long way  
and baked an Awrey-ful lot  
of good things since 1910...

It was a neighborly gesture that started Mrs. Fletcher Awrey baking bread in her wood-fired oven back in 1910. And sons Thomas, Wilbur and Elton delivered only a few dozen loaves a week to the immediate community.

Today, 60 years later, we're here in Livonia and still baking good things to eat for our neighbors—at the rate of almost 100 loaves of bread a minute—plus pastries, pies, cakes and cookies. And we're still delivering the baked goods. (But the Awrey neighborhood has expanded to include just about all of Michigan's lower peninsula as well as in-flight food service for major airlines.)

We're glad we've been here 60 years to serve you. And we thank you for appreciating our efforts to please you by buying our products. Because of you, dear customers, we have, indeed, come a long way since 1910.



## It's a long journey from a truck farm to the new desk of Harry S. Wolfe.



It's a long journey from a truck farm to the new desk of the area's largest and most successful Realtor.

But Harry S. Wolfe made it. What's more, he took his entire family with him. And to celebrate he is planning the realization of a dream to build a modern \$200,000 office building as part of a birthday gift to downtown Livonia.

One of the area's biggest boosters, Harry senior has served Livonia long and well. Starting as the township clerk, he held that office for 14 years, then served as chairman of the Charter Commission and later as the first president of city council.

AND EVERY waking minute he was a Livonia booster who still carries on as the man behind the scenes in the Livonia Goodfellow Drive each year.

Harry senior, started as a truck farmer at the corner of Seven Mile and Farmington Roads away back in 1925. By diligent work with his tomatoes, potatoes and melons he became one of the largest garden farmers in the state.

Hard work had come natural to him — his mother, Mrs. Charlotte Wolfe, used to drive a team once each week to the old Western Market and there sold the produce. In those days Grand River was a sand road.

In search of better things, Harry opened his first real estate office at the corner of Seven Mile and Westmore on Memorial Day of 1925. And this office is still open to the public after 40 years.

So successful was he as a realty agent that he opened a second office at Five Mile and Hubbard (across the street from Bentley High School) in 1936. It is this office that is due to give way to the modern office complex that is to be built within the next year.

When he opened the Five Mile office he began the development of what was known as Lee Valley Estates. It became a success, too, and he then developed Zeigler Estates and Bell Creek Estates.

As you drive along this area and note its beauty it is the work of Harry S. Wolfe and his family.

WITH THE above-mentioned developments behind him he went on to create Staman Acres, Greer Farms, Livonia Hills, Garden Grove and Westmore Subdivision.

Not satisfied with the success attained in Livonia, with the help of his sons he expanded to the north country and took over development of Ponderosa Shores, Lake Manuka Manor, Lake Manuka Forest and the Au Sable River Valley Estates. All these developments are in the Roscommon-Gaylord area in the upper part of the Lower Peninsula.

ALONG THE WAY Harry senior gradually worked his family into the business and it became a real family affair.

First, it was Harry E., now vice president of the firm, who started as the builder and then turned to development. It was his firm (The Wolfe Construction Co.) that built Livonia City Hall.

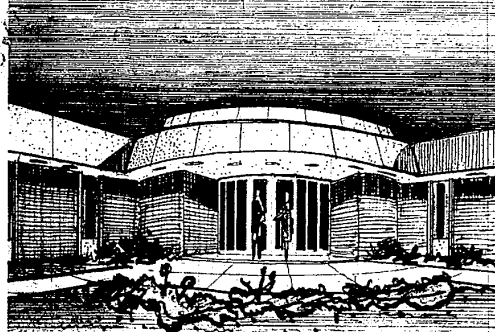
Following Harry E. came Don, a second son, who is sales manager of the firm and now a grandson, Harry L., son of Harry E., has joined the firm and heads the Closing Department. He is well versed in real estate law.

"I've always had faith in Livonia," the elder Wolfe confided in announcing the plans for the new building, "and this building is ample proof that we have faith in the future."

"With this building we will have ample room for our 18 salesmen and facilities for all customers along with a meeting room that will be available for organizations and ample parking."

And standing by, as a silent witness, is Harry senior's wife, Irene, whose patience and diligence also has made her a part of the company for all these years.

What a birthday present the Wolfe Building will be!



Harry L. Wolfe

REAL ESTATE • ESTABLISHED 1925

32398 Five Mile Road  
33235 Seven Mile Road  
Livonia 48152  
Telephone KE 4-4358