

exhibitions

ARTSPACE

Friday, Oct. 25 — Rental gallery for fine art opens officially. Currently has works by Johns, Dubuffet, DeKooning, Leger, Moore, Egner, Lindner and Pearlstein along with many others. Reception 5-8 p.m. Lots Pines-Frank is in charge. Regular hours are 11 a.m. to 5:30 p.m. Tuesday-Saturday, 574 N. Woodward, Birmingham.

TOWN CENTER GALLERY

Acrylic stencil castings by Maxwell, Japanese abstract etchings by Hasegawa and carborundum etchings by Brinson plus gallery regulars throughout November. Hours are 11 a.m. to 5:30 p.m. Monday-Friday, 11 a.m. to 4 p.m. Saturday, 3000 Town Center, Suite 45, Southfield.

PHYLLIS KRAUSE GALLERY

Jewelry incorporating shards of Ming Dynasty blue and white porcelain, 1368-1643 AD, antique silk embroidery from China, masks from Japan, puppets from Thailand, antique wood carvings from Japan, the Philippines, New Guinea, India and Nagaland. Wearable art includes hand painted silk from Poland, stichery from the hill tribes of Thailand and beaded necklaces from Nagaland. Hours are 11 a.m. to 5 p.m. Tuesday-Saturday, 29 W. Lawrence, Pontiac.

55 PETERBORO

Thursday, Oct. 31 — Works by Otto, Grenia, Bailey, Montag, Amelind, Belanger, Selezak and Pallas. Reception to meet the artists 5:30-8 p.m. Thursday. Hours are 2-6 p.m. Thursday-Saturday, 55 Peterboro, two blocks south of Mack between Woodward and Park, Detroit.

MORIAN FINE ART

New paintings on canvas and paper by Phyllis Haver are on display through Nov. 18. She's a Michigan artist who studied at Wayne State and Society of Arts and Crafts, 29512 Northwestern, Southfield.

CENTER FOR CREATIVE STUDIES

Works by "Fifteen Illustrators" are on display in the Sarkis Galleries through Nov. 20. Hours are 9 a.m. to 4 p.m. Monday-Friday, 245 E. Kirby, Detroit.

OAKLAND COUNTY GALLERY

Oil and acrylic paintings by Nora Chapa Mendoza continue on display until Nov. 28. Gallery hours, 8:30 a.m. to 5 p.m. Monday-Friday in the Oakland County Executive Building, 1200 N. Telegraph, Pontiac.

SCHWEYER — GALDO GALLERY

Miami based artist Ramon Carulla will have a retrospective exhibition, "Masks, Tables and Other Icons," through Nov. 30. Wine reception 7 p.m. Wednesday, Oct. 30. Gallery hours, 11 a.m. to 4 p.m. Tuesday-Saturday at 29 W. Lawrence, Pontiac.

YAW GALLERY

Anthony Lent exhibits his approach to jewelry through Nov. 13 at 550 N. Woodward, Birmingham.

PEWABIC POTTERY

Robert Sedstrom and Gordon Oresar show their work in porcelain and fire until Nov. 16. Gallery hours, 10 a.m. to 5 p.m. Tuesday-Saturday at 10125 E. Jefferson, Detroit.

DETROIT ARTISTS MARKET

"Tangents and Definitions in Abstract Art" features Detroit artists Tom Despard, Tod Erikson, Ruth Goldfaden, Robert Hansen, Theresa Herron, Jim Pajkowski and Carol Vitale. In the main gallery at 1453 Randolph, Detroit. Also showing "Pin It Up" works on paper. Both run until Nov. 8. Gallery hours are 11 a.m. to 5 p.m. daily.

HILL GALLERY

Exhibit of sculpture by Joseph Wesner until Nov. 9 at 183 Townsend, Birmingham.

DETROIT GALLERY OF CONTEMPORARY CRAFTS

Collection of dolls figures and fetiches continues through Nov. 16. Among the 17 national artists participating are Susan Bittel from Michigan, Adina Bloom of Tennessee and Rosalie Panjak of Alaska. Figures in porcelain, soft sculpture, carved wood, woven hemp and animal skins. Exhibit continues to Nov. 16. Gallery hours 11 a.m. to 5 p.m. Monday-Saturday at 301 Fisher Building, Detroit.

XOCHIPILLI GALLERY

New work by Maggie Citrin continues to Nov. 16. Hours, 11 a.m. to 5 p.m. Tuesday-Saturday at 548 N. Woodward, Birmingham.

ARNOLD KLEIN GALLERY

Larry Blivitt, professor at Aquinas College, Grand Rapids, member of the Pastel Society of America and education chairman of American Pastel Society, exhibits oil and pastel landscapes and portraits. Continues to Nov. 9. Hours, 11 a.m. to 5:30 p.m. Tuesday-Saturday at 4250 N. Woodward, Royal Oak.

CENTER FOR CREATIVE STUDIES

Oct. College of Art and Design conducts annual open house with faculty members and instructors from 11 a.m. to 4 p.m. at the college, 245 E. Kirby, Detroit. College galleries featuring student and faculty shows will be open in Sarkis Galleries, "Six Illustrators" in the Yamasaki Main Floor Gallery, "Crafts Students" and in the student-run Underground 245 Gallery, Industrial Design Student Show.

THE GALLERY AT MAIN STREET PLACE

An exhibit of Chinese brush painting by award winning artists Ku Feng, Man, E.T. Newbome and Sandra L. Wood runs until Nov. 24. Gallery hours, 10 a.m. to 5 p.m. Tuesday, Wednesday, Saturday, 10 a.m. to 7 p.m. Thursday, Friday at 903 N. Main St., Royal Oak.

SUMMIT PLACE

Detroit International Salon of Photography displays the works of 249 winners in its 52nd annual competition, featuring 249 amateur photographers from around the world. Continues to Sunday, Oct. 27. Open from 10 a.m. to 9 p.m. Monday-Saturday and from noon to 5 p.m. Sunday at Telegraph and Elliott Lakes Roads, Waterford Township.

GALLERY YAKIR

Signed lithographs, etchings and silk-screens by Agan, B. Levy, Zaritsky, Stravinsky and Klavner are shown until Oct. 27 at the Jewish Community Center, Maple and Drake Roads, West Bloomfield. Closing reception, 2-5 p.m. Oct. 27.

GOLDEN POND

Helmer Hertling, of West Bloomfield exhibits throughout the week to mark the grand opening of the Golden Pond Wildlife Art Gallery, in the Continental Market Building, 410 S. Woodward, across from the Birmingham Theatre, Birmingham.

PALETTE AND BRUSH CLUB

Jointed art exhibit marks the club's 50th anniversary. Hours, 9 a.m. to 5 p.m. daily in the lobby of the New Center One, corner of Second and Grand Blvd., Detroit. Sunday entrance on Second Avenue. Continues to Nov. 3.

DETROIT INSTITUTE OF ARTS

Italian Renaissance Sculpture in the time of Donatello will be shown until Jan. 5 at the DIA, 5200 Woodward, Detroit. Admission free. Includes secular and religious works of art by Donatello, his rivals and those who inspired him, Jacopo della Quercia, Nanni di Banco, Ghiberti, Luca della Robbia, Alberti, Verrocchio, Antonio Rossellino, Desiderio da Settignano, Bellano and Bertoldo. Works lent by major museums and collectors in Italy, Austria, England, France, Holland, West Germany and the U.S.

SOMERSET MALL

Michigan Woodworkers Guild presents its fifth annual exhibition featuring the work of 25 members. Demonstrations. Runs to Oct. 27 in small, Big Beaver and Coillidge, Troy.

LIT

Maritime paintings and collages by Mill Kemnitz will be exhibited until Nov. 4. The exhibit, co-sponsored by the business Consortium for the Arts and Lawrence Institute of Technology can be viewed from 8 a.m. to 10 p.m. in the atrium of the Buell Building on the LIT campus, 21000 W. 10 Mile, Southfield. No admission charge.

IRVING FELDMAN GALLERY

Friday, Oct. 25 — The works of Harold Linton, professor of architecture and director of freshman studies at the School of Architecture, Lawrence Institute of Technology, is featured in his

first one-man show of large and small scale acrylic canvases. Reception 7-9 p.m. Friday, Oct. 25. Gallery hours, 10 a.m. to 5 p.m. Monday-Saturday, 10 a.m. to 8 p.m. Thursday at 5917 Orchard Lake Road, West Bloomfield. Show runs through November.

BBAA

Saturday, Oct. 26 — Birmingham Bloomfield Art Association faculty exhibits until Nov. 33. Members preview, 5-7 p.m. Friday, Oct. 25. Gallery hours 9:30 a.m. to 4:30 p.m. Monday-Saturday at 1518 S. Cranbrook Road, Birmingham.

ROYAL OAK LIBRARY

Royal Oak Arts Council presents, "Glass Masters Invitation II" through Oct. 27 in the Royal Oak Library, 222 E. 11 Mile, Royal Oak.

FIRST FEDERAL OF MICHIGAN

Two multi-media works by members of the Birmingham Society of Women Painters, entitled "Cats — A Theme Show," continues through October in the lobby showcase of First Federal of Michigan's main office, Woodward at Michigan. The building is open from 7 a.m. to 7 p.m. Monday-Friday, 7 a.m. to 4 p.m. Saturday.

LIVONIA CITY HALL

Howard Dombrowski exhibits throughout October in the lobby of the Livonia City Hall.

DETROIT PUBLIC LIBRARY

"Unknown Landmarks," photographs of the changing urban environment by Carlos Diaz continue on display through Nov. 6 at 5201 Woodward Ave., Detroit.

DETROIT FOCUS GALLERY

"Artists to Watch" group exhibition with works by Ruth L. Lampkins, Don Saleida, Patricia Soderberg and Raymond Wetzel. Continues through Nov. 9. Hours are noon to 6 p.m. Wednesday-Friday, 743 Beaubien, Detroit.

PAINT CREEK CENTER FOR THE ARTS

Michigan Weavers Guild fall show and sale continues through Nov. 9. Hours are 10 a.m. to 5 p.m. Tuesday-Saturday, 407 Pine, Rochester.

PONTIAC ART CENTER

Michigan Architecture in Photography, a juried show, runs through Nov. 9. "Residences," oil paintings by Corinne M. Gignac in the Clerestory, 47 W. Williams, Pontiac.

CANTOR/LEMBERG GALLERY

Cantor/Lemberg Gallery will exhibit recent acquisitions and gallery selections for the months of October and November. Included in the exhibit will be works by Enzo Cucchi, Sam Francis, Lester Johnson, Robert Mangold, Louise Nevelson, Avra Robinson, Jim Rinkowski, T.L. Solien and Donald Sultan. Gallery hours, 11 a.m. to 6 p.m. Tuesday-Saturday or by special appointment at 535 N. Woodward, Birmingham.

pointment at 535 N. Woodward, Birmingham.

BBAA

The rental/sale gallery at the Birmingham Bloomfield Art Association will feature pottery by Eugene Meso through Nov. 1. Gallery hours are 9:30 a.m. to 4:30 p.m. Monday-Saturday at 1518 S. Cranbrook Road, Birmingham.

BLOOMFIELD FINE ARTS

"Autumn Into Winter," exhibit of oils and watercolors of the seasons, continues through December. Hours are 10 a.m. to 6 p.m. Tuesday-Saturday, until 8 p.m. Thursday-Friday, 280 N. Woodward, Birmingham.

HENRY FORD COMMUNITY COLLEGE

Photographs from the collections of Steven Benson, James Crawford and Carl Tob are on display through Nov. 1 in the Simon Gallery of Fine Arts Building, 5101 Evergreen, Dearborn. Closed weekends.

SOUTHFIELD CULTURAL ARTS GALLERY

Paintings by Jean Marie McKnight continue on display through October. Hours are 9 a.m. to 9 p.m. Monday-Friday, until 4 p.m. Saturday, Parks and Recreation Building, 26000 Evergreen, Southfield.

DONNA JACOBS GALLERY

Exhibit of Greek, Roman, Egyptian, Etruscan, Near Eastern and Pre-Columbian works. Hours are 11 a.m. to 5:30 p.m. Tuesday-Saturday, 574 N. Woodward, Birmingham.

TROY ART GALLERY

Watercolor collage by Edee Joppich and wildlife stoneware by Marilyn Richards are on display through Oct. 28. Hours are 11 a.m. to 5:30 p.m. Tuesday-Saturday, 743 W. Big Beaver, Troy.

SHELDON ROSS GALLERY

Exhibit of drawings by John Sloan, member of the American "Ashcan School," have just released from the estate. Many, just released from the Sloan taught at the Art Students League in New York in 1915. Many of these are modern, for others Sloan focused on dance halls, row houses, backyards and saloons. Continues through Nov. 9. Hours are 11 a.m. to 5 p.m. Tuesday-Saturday, 250 Martin, Birmingham.

HABATAT GALLERIES

Glass by many of the faculty of the Pritchard School and other outstanding artists continues through Oct. 26. Regular hours are 10 a.m. to 6 p.m. Tuesday-Saturday, until 9 p.m. Friday, 2835 Southfield, Southfield, Lathrup Village.

VENTURE GALLERY

Bake fired vessels by Rick Foris are on display through Oct. 26. Hours are 10 a.m. to 6 p.m. Tuesday-Saturday, until 9 p.m. Friday, 2835 Southfield, Lathrup Village.

LAWRENCE INSTITUTE OF TECHNOLOGY

"American Architecture: Innovation

& Tradition," photo exhibit organized and circulated by the American Institute of Architects Foundation, seeks to identify what is uniquely American in architecture. Continues through October, 8 a.m. to 5 p.m. Monday-Friday, 9 p.m. Thursday, Oct. 31, Architecture Gallery, 21000 W. 10 Mile, Southfield.

MEADOW BROOK ART GALLERY

"From the Collection of Sol Lewitt" continues through Nov. 17. Hours are 1-5 p.m. Tuesday-Friday, 2-4:30 p.m. Saturday and Sunday and evenings when there's a theater performance across the hall, Oakland University, Rochester.

HOOPERMAN GALLERY

"Collectable Coverings V" features work by 70 artist/designers. Hours are 10:30 a.m. to 5 p.m. Tuesday-Saturday, 155 S. Bates, Birmingham.

CADE GALLERY

Paintings by three artists, Robert Edwards, Mark Gauthier and James Kirchner, are on display through Nov. 2. Hours are 1-5 p.m. to 7 p.m. Tuesday-Saturday, 214 Sixth St., Royal Oak.

GALLERY BIRMINGHAM

Latest cast paper works by Frank Gallo, "Young Planist," a cast paper portrait of Beethoven, is the first of three commemorative works by Gallo. The sale of them will benefit the Beethoven Foundation career development fellowships for young American pianists. Gallo's other new work, "The Booding," is also on display along with new works by Linda Golden, Susan Thomas, Sharon Tietman, Sophia Rivkin, Norita Proka, Diane Zook, Peggy Hopper, Frank Rowland, Ron James, Marilyn Derwenkus, Jean-Marie McKnight and Lee Shapiro. Hours are 10 a.m. to 5 p.m. Monday-Saturday, until 10 p.m. Thursday and Friday, 223 S. Woodward, Birmingham.

TOWN CENTER GALLERY

Works by more Brazilian artists including Iglerias, Guilhermo, Reclia and others, are featured through October. Hours are 10 a.m. to 5:30 p.m. Monday-Friday, 11 a.m. to 4 p.m. Saturday, 3000 Town Center, Southfield.

THE COMMUNITY HOUSE

Watercolors by Julie Dawson are on display through Oct. 28. Many of her works were inspired by her travels to China and Africa. She's also a great student of flowers. 380 S. Bates, Birmingham.

FEIGENSON GALLERY

Opening show of the fall season, "From Detroit: 1925" features work by Cary Bakamiller, Betty Brownlee, Glenn Booth, Tom Ellis, Diane Carr, James Chatelein, Georg Ethel, Steve Foote and many more. Continues to Nov. 2. Hours are 11 a.m. to 5 p.m. Tuesday-Saturday, 310 Fisher Building, Detroit.



THREE BEDROOM RANCH. Sharp, brick home plus 2 bedrooms in basement finished and carpeted. Large fiberglass covered deck in rear, gas grill plus aluminum sided 2 car garage with opener. \$72,500. 477-1111.



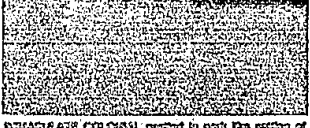
EXECUTIVE RANCH. Beautiful 2 year old custom ranch. Great room and 2 decks for your round dining. Country appointments and neutral color thru-out. \$127,500. 477-1111.



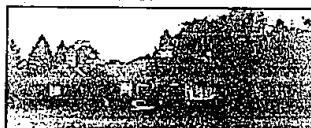
SHARP 3 bedroom ranch on well landscaped lot, country kitchen, family room, Florida room. Possible 4th bedroom in basement. \$63,500. 477-1111.



DUTCH COLONIAL. 4 bedrooms, formal dining room, family room with fireplace and doorwall to patio. Good family floor plan, large lot in nice area. \$37,000. 477-1111.



ELABORATE COLONIAL nestled in park like setting of 10000 sq ft with walking distance to school. Master room, terrace and 2nd car garage. \$119,500. 691-1523.



OPEN SUNDAY 2-5 at 27880 Spring Valley in Farmington Hills. Custom ranch - acreage, 4 bedrooms on spectacular lot, many extras: central air, fire and burglar alarm, central vacuum and more. \$159,500. 851-1900.



BROCK 4 bedroom ranch. Park-like setting with gazebo. Hardwood floors in all bedrooms. Finished basement. \$74,900. 851-1900.



CUSTOM COLONIAL with class begins at the front door. Spacious foyer, paneled library, 1st floor laundry, separate master suite, beautiful family room with fireplace; sprinkling system, professionally landscaped. Priced at \$109,000. 659-2200.

FREE* PRE-LICENSE CLASS STARTS MONDAY MORNING

Take the first step toward a possible real estate career. Call one of the offices listed below and ask for the manager. Both morning and evening classes starting Monday, October 28th. You can finish the entire course in less than ONE MONTH.

*Small materials charge



SPACIOUS 4 bedroom well maintained home ideal for growing family. Huge family room with gas fireplace and dry bar, sun porch and deck with grill off dining room. Walking distance to schools. \$24,900. 348-6430.



AT LAST a 2 bedroom ranch condo in desirable Lexington condos. Loads of storage, all appliances included. 2nd car garage. Finished rec room with full bath in basement. Tremendously decorated. \$44,000. 348-6430.



CUSTOM CONTEMPORARY RANCH. 3 bedrooms home with landscaped setting in living and family room. Features 2 level deck. New carpet, new kitchen, new roof, straight. Possible large lot with lots of trees. \$119,500. 691-1523.



CONV 4828 THIS ONE Charming 3 bedroom ranch providing city living in country setting. 3rd story main. Spacious kitchen, fireplace, paneled den, second car garage. 1st floor sun. \$82,500. 599-2200.



DOWNTOWN FARMINGTON. 4 bedrooms, 2 1/2 baths, in-ground pool, patio and 1 1/2-level deck. Brand new kitchen. All tile in conventional Alta Loma area. \$119,500. 477-1111.