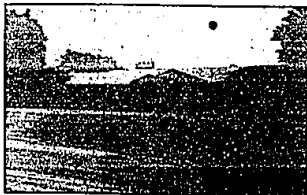
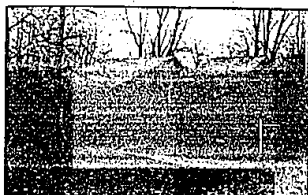




# Merrill Lynch Realty



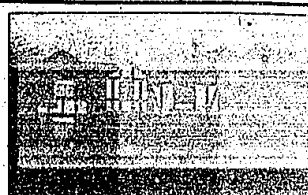
**BLOOMFIELD HILLS.** Spectacular property highlights walk-out Ranch with fabulous interior: updated kitchen, large master suite with dressing area. Includes 3 car garage, deck, plus room for pool and tennis court. 647-5100 \$255,000 (PHE)



**PINE LAKE FRONTAGE.** Fabulous Contemporary offers grand entry plus open Great Room with vaulted ceiling and views of wooded yard. Step-up dining area opens to all-weather deck, library, lower level game room. MORE. 647-5100 \$395,000 (PHI)



**MAGNIFICENT HILLTOP COLONIAL** with island Lake privileges offers over 4,000 sq. ft. of living space on approximately 2 acres. Marble foyer, circular staircase, fireplaced master suite with bath and dressing area. MUCH MORE. 851-8100 \$525,000 (KWI)



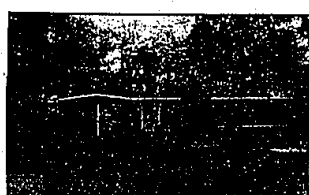
**OPEN SUN. 652 Overbrook, S. of Long Lake, W. of Lahaer.** Prime Overbrook Area of Bloomfield Hills features fabulous Colonial with California driftstone fireplace, garden room, 4 bedrooms, spacious kitchen, more. 648-6000 \$233,000



**CHARMING ENGLISH COTTAGE** on private wooded lot offers beamed ceilings and tasteful decor. Oversized fireplace plus cathedral ceiling in Great Room, two recreation areas, extensive decking. 651-8100 \$204,800 (OWL)



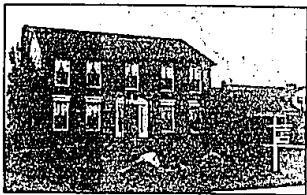
**OPEN SAT. & SUN. 3824 Old Pine Way, N. of Pontiac Trail, E. of Union Lake Road.** Charming one-of-a-kind New England Style Cape Cod is nestled in superbly private treed setting. Includes large country kitchen. Open floor plan. 651-8100 \$183,000



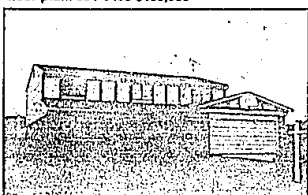
**OPEN SUN. 3300 Calmarosa, N. on Adams** passed Gunn Rd. to Calmarosa, left. Unique Contemporary Ranch on private, wooded setting includes 4 bedrooms, 3 baths, over 3,000 sq. ft. of well-planned living space. 651-8850 \$159,900



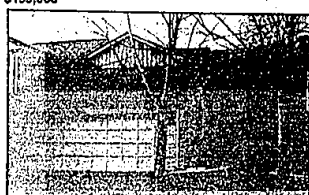
**OPEN SAT. & SUN. 633 Southfield, N. of Lincoln, E. of Southfield.** Private cul-de-sac setting near downtown Birmingham boasts remodeled detached condominium home. Neutral decor, first floor master suite, 2 1/2 baths. 647-5100 \$195,500



**OPEN SUN. 25404 Rutledge Crossing, S. of 11 Mile, E. of Drake.** Gorgeous Colonial includes neutral decor, wood kitchen floors, full brick wall fireplace, bay windowed breakfast room, meticulous maintenance, all in area of more expensive homes. 626-9100 \$148,900



**MINT CONDITION.** Colonial in wonderful family area offers neutral decor, open kitchen and family room, plus large master suite with dressing area. Walk-in closets, deck. 651-6650 \$124,900 (SRL)



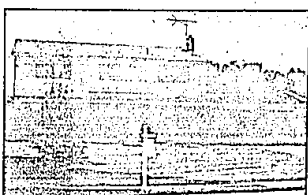
**MULTI-LEVEL CONDOMINIUM** offers extensive decking overlooking ravine. Built-ins, plus Herringbone Oak flooring in new kitchen. 3 bedrooms, 2 1/2 baths, master suite with dressing area. MORE. 648-6000 \$109,900 (TEI)



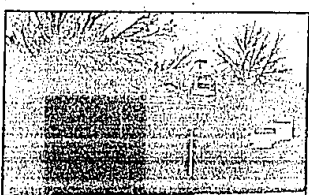
**OPEN SUN. 4506 Brightmore, S. of Long Lake, Lahaer to Ardmore, W. to Brightmore.** Quality executive Colonial on private Verner Lakefront setting. Includes neutral decor with recent painting, 4 bedrooms, 3 1/2 baths, family room, library, sauna. Exceptional value! 647-5100 \$289,500



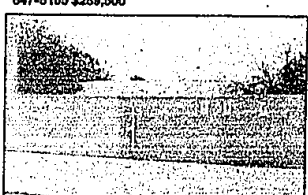
**CHARMING CAPE COD** on beautiful treed lot offers lovely kitchen with Jenn-air and double ovens, fireplace in family room and recreation room. Bloomfield Schools. 648-6000 \$179,900 (HBO)



**OPEN SUN. 5577 Abington, N. off 14 Mile, E. of Orchard Lake on Heather Heath.** Quality updating is featured throughout stately 4 bedroom Colonial. Includes Rosewood buffet in dining room, vertical blinds, track lights, more. 626-9100 \$125,900



**OPEN SUN. 26374 Killerton, N. of 11 Mile, W. off Middlebelt.** Open floor plan is featured in sharp Farmington Hills Colonial with 4 bedrooms, separate dining room, recreation room, more! 628-9100 \$105,000



**CUSTOM ONE OWNER** Ranch on private cul-de-sac includes neutral decor. Two-way fireplace separating living and family rooms, 4 bedrooms, 2 1/2 baths, formal dining. Bloomfield Hills Schools. 626-9100 \$169,900 (EHO)



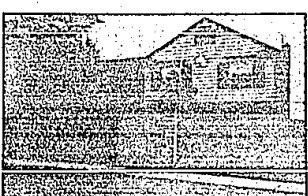
**PICTURESQUE CANAL/RIVER** setting with ready access to Cass Lake. Includes 4 bedrooms, paneled family room with heater and walk-out to yard. Country kitchen, 2 1/2 car garage, plus beach privileges. 626-9100 \$94,500 (AFU)



**FAMILY COLONIAL** with lovely rough sawn exterior located on private 1.6 acre lot just north of Rochester. Quality built, 4 bedrooms, walkout basement. Wet plaster construction, Andersen windows. 651-8850 \$109,000 (KRL)



**OPEN SUN. 2684 Tyler, N. of Catalpa, E. of Greenfield.** Efficient 1 1/2 story offers new furnace, 3 bedrooms, full basement, low maintenance exterior, outstanding value. 628-9500 \$45,700



**JUST REDUCED!** Lovely Quad-Level in prime Hatherly Village Sub. of Sterling Heights includes 3 bedrooms, 2 1/2 baths, library, gas barbeque, move-in condition. Central air and underground sprinkling system too. Call Now! 689-6900 \$20,000



**FORMER COLONIAL MODEL** in Troy's desirable Stoneridge Subdivision offers 4 bedrooms with generous closet space, formal dining, family room. Wonderful family area. 689-6900 \$108,500 (HTT)



**NEAT AND CLEAN** 3 bedroom, 2 bath brick Ranch offers generous storage space and many built-ins. 2 car attached garage, built-in dishwasher, ceiling fan. 689-6900 \$89,600 (HTO)



**OPEN SUN. 3120 Sumner, N. of Commerce, E. of Orchard Lake.** Beautifully maintained townhouse includes 2 bedrooms, 1 1/2 baths, finished recreation room, private entry. 651-8100 \$47,000



**OPEN SUN. 50723 Elmwood, E. of 13 Mile, E. of John R.** Exceptional family Colonial offers good floor plan with formal dining room, 4 bedrooms, 1 1/2 baths, nice yard. Priced to sell. 689-6900 \$20,000

**BIRMINGHAM**  
975 S. Hunter  
at 14th Mile Rd.  
646-6000

**BLOOMFIELD HILLS**  
1520 N. Woodward  
at Long Lake Rd.  
647-5100

**FARMINGTON HILLS**  
FRANKLIN  
31000 Northwestern Hwy.  
at 13 Mile Rd.  
626-9100

**TROY**  
5012 Rochester Rd.  
at 14th Mile Rd.  
689-8900

**ROCHESTER**  
100 W. University  
at 14th Mile Rd.  
651-8850

**WEST BLOOMFIELD**  
100 W. University  
at 14th Mile Rd.  
651-8850