

Baldwin Brass . . . A Christmas Tradition



Holiday Savings of 20%

Come in today & see Michigan's largest selection of glowing, polished Baldwin Brass.
Made in the United States to the highest standard of excellence.

Classic Interiors

Member: Interior Design Society
Fine Furniture . . . Where Quality Costs You Less
20292 Middlebelt Rd. (South of 8 Mile Rd.)
Mon., Thurs. & Fri. Evenings 'til 9 p.m. • 474-6900
Sole Lady Dec. 31st
OPEN SUNDAYS 1-5

Wassail warms heart with flavor

Continued from Page 52

four tbsp. amontillado sherry
two sticks butter or margarine
1/4 cup brown sugar
1/2 cup white sugar
4 eggs
2 1/4 cups flour
1/2 tsp. nutmeg
1/2 tsp. cinnamon
1/2 tsp. baking powder
1/2 tsp. salt

Steep fruit and nuts in two table-spoons sherry overnight.

Line nine-inch round tin with two layers of waxed paper, extending paper one inch above tin.

Cream butter and sugar. Add unbeaten eggs and mix well. Add half of the fruit and remainder of sherry. Stir.

Sift flour, spices, baking powder and salt and gradually add to half of mixture. Add remainder of fruit and then gradually add remainder of flour. Mix.

Place mixture in prepared tin on middle shelf of 325 F oven. Bake about two hours (test after 1 1/2 hours).

NO BAKE FRUIT CAKE

one lb. seedless raisins
one lb. pitted dates

one lb. dried figs
one lb. shredded coconut
one lb. shelled walnuts
1/4 tsp. salt
one tsp. vanilla
1/4 cup amontillado sherry (optional)

Coarsely chop raisins, dates, figs, coconut and walnuts through food processor or blender. Do not overblend.

Empty mixture into large mixing bowl and add salt, vanilla and sherry. Blend well.

Spoon and pack mixture into a mold. Two six-cup loaf pans are suitable. Cover and place a weight on top. Refrigerate three days or keep in a cold place to "age".

Serve thinly sliced.

HOT PORT WINE SAUCE

1/2 cup butter or margarine
1/2 cup sugar
one egg
1/4 cup ruby port
one tsp. grated orange rind

Cream together butter and sugar. Beat egg and add to butter mixture. Stir in port and orange rind.

Just before serving, heat mixture, stirring until warm throughout.



35480 Grand River • Farmington Hills • (313) 471-7900

• Diamonds

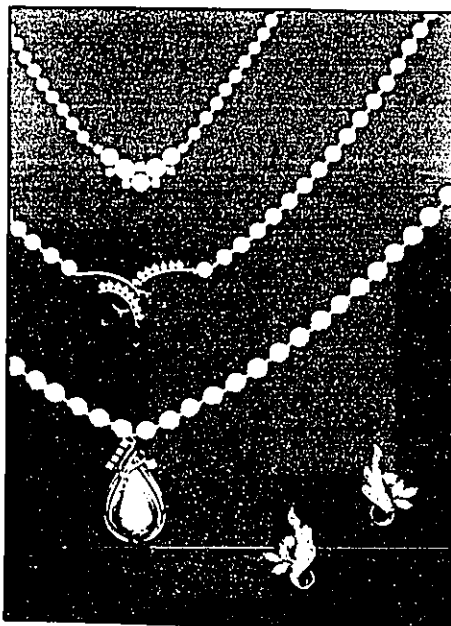
They come in pale and delicate colors as well as deep, vibrant ones. They come in black too! They can combine the intense, deep color of a fine colored stone with the brilliance only a diamond can offer.

• Pearls

A tremendous variety in shape, color and texture. They offer a compliment to any look. Versatile and easy to wear. Mixes well with diamonds. The 'Queen of Gems.'

• Rubies

The Hindus called it 'ratnaraj,' which means 'king of precious gems.' A ruby is a very dramatic stone. Indeed, there's nothing quite as red as a nice, fine ruby. A ruby is vibrant, passionate, fiery and it says something about your personality.



"Uniquely Designed Jewelry, done on the premises, at affordable prices."