

# Access studios open to qualified producers

Lark Samouelian is executive director of the Southwestern Oakland Cable Commission.

By Lark Samouelian  
special writer

Indeed, there is direction for you after completing the television workshops. There are specific policies to be used for guidance as residents facilitate the local television opportunity.

An alert to those "city fathers" who are responsible for initiating large community events and to organization coordinators: Remember, we have a mobile television van which can go on location. Pick up the use guidelines at the SWOCC office, 23600 Liberty, Farmington.

It is also the intention of both MetroVision and the Southwestern Oakland Cable Commission to encourage maximum use of the access studio and editing facilities by all qualified producers.

IT IS recognized that the facilities must be subject to some limitations to ensure usage by the broadest range of residents. These guidelines are part of the overall Southwestern Oakland Cable Commission and MetroVision Community Access Policies.

• Priority for using the console editor will be given to producers who must add fades, character generated information, utilize time-base corrector or lay music from the turntable or cassette recorder to their program. To help minimize the need for the console editor, residents will be encouraged (through pre-production planning meetings) to shoot as much as possible while on location (fades, titles, etc.).

• The people admitted to the control room during a studio shoot will have the responsibilities of: director, technical director, character generator operator, audio director and producer, as well as two joystick editors and a cablecaster. Other students, talent or observers will be admitted only at the permission of the producer/director with the consideration for other joystick editors and cablecaster.

• If an individual is 15 minutes late for scheduled editing time and has not called, editing time will be given to someone else.

• Evening studio and editing time needs to be limited to a realistic ratio in order to accommodate more residents during peak hours (6-10 p.m. Monday through Thursday; 5-9 p.m. Friday). A suggested ratio is: two hours of studio time to produce one 30-minute program (e.g. 5:30-7:30 p.m.); 2.5 hours of studio time to produce one 60-minute or two 30-minute programs (e.g. 7:30-10 p.m.).

• In-studio editing will be recommended for most studio productions because it is one of the most beneficial procedures to secure a finished product. In addition, this procedure enhances the quality of the program (no loss of generation), and minimizes unnecessary editing time. Pre-production meetings and on-site staff assistance will help implement this procedure. This policy affirms that the producer has the ultimate choice, in consultation with staff, whether selection of this procedure will be the chosen alternative. (A production guideline sheet defining production alternatives is available at the studio).

Metrovision of Oakland County's public-access programming on Channel 12 for the week of Dec. 16.

## COMMUNITY ACCESS PROGRAMMING SCHEDULE Monday, Dec. 16

- 12 noon — Lifestyle, Christmas. Repeat at 6 p.m.
- 12:30 p.m. — Livonia Junior Football League vs Farmington Eagles. Repeat at 6:30 p.m.
- 1:30 p.m. — Artist in You. Repeat at 7:30 p.m.
- 2 p.m. — On Our Own. Repeat at 8 p.m.
- 2:30 p.m. — First Alert. Repeat at 8:30 p.m.
- 3 p.m. — Old Fashioned Christmas Special. Repeat at 9 p.m.

## cable connection

Tuesday, Dec. 17

- 12 noon — International Yuletide Concert. Repeat at 6 p.m.
- 1 p.m. — Fitness Fever. Repeat at 7 p.m.
- 2 p.m. — Insight. Repeat at 8 p.m.
- 2:30 p.m. — Novi Band A Rama. Repeat at 8:30 p.m.

Wednesday, Dec. 18

- 12 noon — Cooking with Class. Repeat at 6 p.m.
- 12:30 p.m. — Farmington Hills Community Chorus. Repeat at 6:30 p.m.

Thursday, Dec. 19

- 12 noon — Perceptions. Repeat at 6 p.m.
- 12:30 p.m. — Old Fashioned Christmas Special. Repeat at 6:30 p.m.

Friday, Dec. 20

- 1:30 p.m. — Viewpoint. Repeat at 7:30 p.m.
- 2 p.m. — Insight. Repeat at 8 p.m.
- 2:30 p.m. — Due Process. Repeat at 8:30 p.m.
- 3 p.m. — In One Ear. Repeat at 9 p.m.
- 3:30 p.m. only — Christmas Puppet Show.

Viewer's Choice. Call 555-7503 and request to view your favorite Channel 12 show.

## CLOSE CALLS

Bones break. Hearts stop. Accidents happen. And when they do, the closer you are to help, the better. Now, with Huron Valley Hospital in the neighborhood, you're closer to the things that matter most in an emergency.

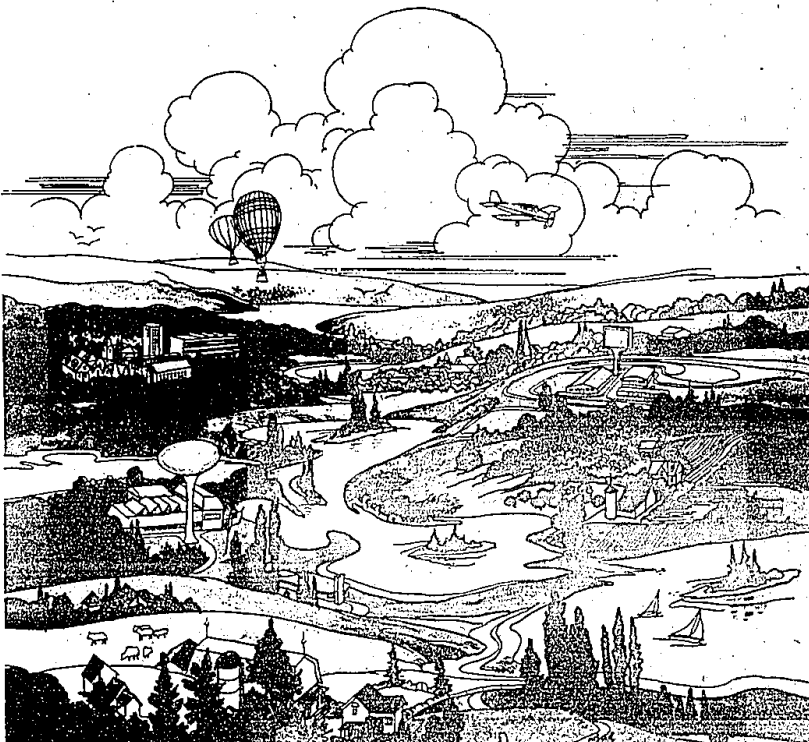
You're closer to the only 24-hour physician-staffed hospital emergency room in western Oakland County.

You're closer to our fully equipped emergency cardiac care and trauma rooms, as well as our intensive

care and coronary care units.

You're closer to one of the finest, most modern, full-service community hospitals in the state.

Huron Valley Hospital is one neighbor you can count on...when every minute counts.



OPENING EARLY 1986

## Huron Valley Hospital

OUR COMMUNITY HOSPITAL  
Affiliated with The Detroit Medical Center

The Hospital is located between East Commerce and Sleeth Roads. Community Information Line: 360-3700.

## YMCA highlights

These YMCA highlights appear courtesy of the Farmington YMCA, 28100 Farmington Road, Farmington Hills. For information, call 555-4020.

**STUDENT MEMBERSHIP** — College students home for the holidays can take advantage of a specially priced membership. For \$25 individuals can have a short-term membership that is valid through Jan. 19. Each college member will have use of the pool, track, gym, weight room and may reserve racquet court time.

**CHRISTMAS CAMP** — Boys and girls ages 6 to 10 can enjoy their time off from school at the Y. Activities take place 9 a.m. to 4:30 p.m. Dec. 23, 24, 25, 27, 30, 31 and Jan. 2 and 3. The fee for YMCA members is \$75 and \$115 for non-members. Swimming, crafts, movies, field trips and more is planned.

ies, field trips and more is planned.

**CHRISTMAS SLEEPOVER** — A Christmas party that goes on forever. From 8 p.m. Friday, Dec. 20 to 8 a.m. Saturday, Dec. 21. Boys and girls 6-10 years old should bring \$1 gift to exchange, sleeping bag, pajamas, toothbrush, swim suit and towel. The fee for Y members is \$10 and \$15 for non-members.

**CHILDREN'S PARTY** — Our 4th Annual New Year celebration for boys and girls 6-10 years of age should register now for a great way to bring in 1986. Party begins at 7:30 p.m. Dec. 31 and children must be picked up by 9:30 a.m. Jan. 1. Party goers should bring a baby picture with their name on the back, sleeping bag, pajamas, toothbrush, swim suit and towel. Fee for members is \$12 and \$18 for non-members.

**The Vineyards**  
WINE CELLAR  
**CHRISTMAS WINE SALE**



**GIANT FRESH BAKED CROISSANTS**  
1 Dozen for 150¢ **2 for \$1.00**



**JARLSBERG SWISS CHEESE**  
**\$2.29 lb.**



**CANADA DRY MIXERS**  
**2/\$1.00**  
plus deposit  
1 liter size

**JUMBO EGGS**  
**79¢ Dozen**

**Haagen-Dazs®** Ice Cream  
Pint - All Flavors **99¢**  
Limit One exp. 12-19-85



Order your holiday basket now



Call Now: 855-WINE