



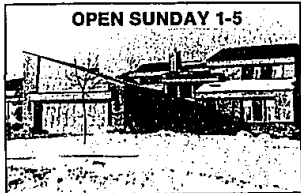
**CHARMING CAPE COD - EMPTY NESTER CLUSTER HOME**  
Property adjoins private, quiet 16 acre, secluded nature park. Home features dormers, bay windows, hardwood floors in country kitchen and Great Room with 2 story fireplace plus loft! First floor master suite and laundry room, wood deck, central air and sprinklers. \$265,000. VIE-75909



**"SECLUDED SETTING"**  
With babbling brook! The serenity of up north is felt in this dramatic contemporary walk-out ranch. Each room presents stunning views and the peaceful sound of running water creates a restful atmosphere in the city. Located in a lovely Farmington Hills area! \$229,000. DAS-75764



**SPECTACULAR CONTEMPORARY**  
Unique home situated on a magnificent wooded lot with stream. Every luxurious amenity including indoor pool, Great Room, 5 bedrooms, 4 full and 2 half baths, photo lab, 5 decks, central vacuum, wet bar, wine cellar and Japanese soaking tub. GOF-64502



**OPEN SUNDAY 1-5**  
**OUTSTANDING CONTEMPORARY CONDO**  
Featuring 1st floor master suite, jacuzzi, 4 skylites, 2 story foyer, cathedral ceiling Great Room with soaring brick fireplace, extensive decking, walk-out lower level and gourmet kitchen. \$179,000. 29757 Deer Run. S. of 14 Mile and W. of Drake.



**OPEN SUNDAY 1-4**  
**A TOUCH OF COUNTRY**  
Acre and a half, older, updated and heavily treed with greenhouse and pond. Family room with wood burning stove, 4 bedrooms, 1 1/2 baths and new windows in master bedroom. \$126,900. 7430 Old Mill. N. of 14 Mile and W. of Lahser.



**OPEN SUNDAY 2-5**  
**SKATE, SWIM AND SAIL**  
Immaculate ranch on private wooded double lot close to beautiful Wing Lake. Newer roof, central air, sprinklers, neutral contemporary decor and Bloomfield Hills Schools. \$109,000. 6336 Thurber. N. off Maple and W. of Telegraph.



**MULTI-FAMILY DWELLING**  
Located in Ferndale. Three buildings each with 2 apartments plus a vacant loft! Total renovation in 1983. Each with 2 stories and basements. Offered at \$137,000 for complete package. SAA-75175



**VAULTED CEILING CONTEMPORARY!**  
Dramatic 4 bedroom Southfield home offering family room, paneled den and game room allow room for many activities. Balcony effect foyer and formal dining room overlooks a full brick fireplace Great Room. \$219,000. RIW-73768



## RALPH MANUEL

ASSOCIATES • REALTORS

1821 W. Maple, Birmingham

647-7100

32961 Middlebelt, Farmington Hills

851-6900

Toll Free 1-800-R-MANUEL



• MEMBER OF TRANSLO RELOCATION SERVICE •  
IF YOU ARE MOVING ACROSS THE CITY OR ACROSS THE COUNTRY, OUR RELOCATION DEPARTMENT CAN MAKE YOUR MOVE SMOOTHER.



Announcing the only area where you can have a choice of custom homesites with Bloomfield Hills mailing and Bloomfield Hills Schools. This residential community, developed by Abbey Homes, offers rolling terrain, trees and some lake sites. Homesites are available to private individuals and builder's are welcome.

Developed by:

*Abbey homes*

### "CHESTNUT RUN MODELS - OPEN SUNDAY 1-4"

#### SOPHISTICATED CONTEMPORARY

Move right into this glamorous home on a magnificently landscaped lot with 2 decks. Unique master bath with soft tub, gorgeous European style kitchen and appliances. Two beautiful fireplaces. \$475,000. 359 Sycamore.

#### "REFLECTIONS"

An extraordinary statement in architecture and craftsmanship with many fine features as well as unique luxury detailing. An example of the attention is apparent even as you approach the front entrance! \$469,000. 342 Sycamore.

#### THE "MONTREUX"

Offering a blend of traditional and contemporary architecture, featuring open planning and modern conveniences housed in classic form and style. First floor master suite with private bath with whirlpool, plus 3 additional bedrooms. \$410,000. 350 Sycamore.

#### COUNTRY FRENCH COLONIAL

This spectacular 4200 square foot home offers the most innovative design and amenities. Featuring master bedroom and guest suites, 3 full and 2 half baths, cathedral ceilings, bay windows, a garden kitchen and wood decks. The price on this 1985 Designer Home is \$449,000. 405 Stoneridge. North off Hickory Grove and West of Lahser.

#### ELEGANT BLOOMFIELD HOME

Enter home through dramatic 2 story turret style foyer which leads to an equally outstanding 2 story family room - walk out onto deck or enter into fully equipped island kitchen with glassed circular nook. Three car attached garage and more! \$565,000. 355 Sycamore.

#### CONTEMPORARY MASTERPIECE

Grand in scale, with nearly 6000 sq. ft. of living area. The creative use of angles, levels, and vaulted spaces punctuate the airy and open character. Skylites, granite, marble, hand rubbed oak and other exquisite details. \$535,000. 347 Sycamore.

#### GRAND MASTERPIECE OF BEAUTY

An octagon-shaped chimney, 2 story planting area, double circular staircase in the spacious foyer, 5 fireplaces, wall-roof glass systems which "open up" 3 rooms to outside light all contribute to a special living experience. \$565,000. 367 Sycamore.

All open houses are located in the new Chestnut Run Subdivision of Bloomfield Hills off Hickory Grove, bet. Lahser & Telegraph.



**NEW LISTING!!**  
A comfortable 3 bedroom, 2 bath ranch home with fireplace, situated on a gorgeous lot, new kitchen and some new carpets. Bloomfield mailing and Birmingham Schools! \$114,900. EAR-65847



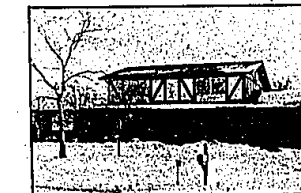
**TWYCKINGHAM VALLEY COLONIAL**  
Excellent value at an unbelievable price! Great family room with fireplace. 4 bedrooms, 2 1/2 baths, central air, patio and easy access to shopping. \$75,900. BEK-74875



**CONTEMPORARY LIFESTYLE?**  
Then this bright, neutral, spacious Southfield Colonial is for you! Four bedrooms, 2 1/2 baths, large family room with fireplace and built-ins plus recently redecorated and meticulously maintained. \$99,900. STR-34298



**FRANKLIN VALLEY SUBDIVISION**  
Maintenance free Colonial situated on a park like lot with running creek. Living and dining rooms, 3 bedrooms, family room with full brick fireplace and parquet floor in foyer. Priced to sell! \$123,900. PEE-34297



**SUMMER TIME FUNN!**  
And the living is easy in this stunning Southfield Colonial. Inside you'll find 4 bedrooms, fully equipped island kitchen with quarry tile and Great Room with beamed ceiling! Outside is an inground pool, gracious patio and sprinkling system! \$179,900. COY-73314