

exhibitions

● **GREAT OAKS MALL**
Thursday, Friday, Saturday — "Touch of the Orient," exhibits of framed Japanese art with demonstrations. Authentic Japanese food, customs and music will also be highlighted, 1270 Walton Boulevard, Rochester.

● **COUNTY GALLERY**
Mixed media works by Detroit Society of Women Painters & Sculptors continues through Feb. 27. The exhibit is on both floors of the Executive Office Building, 1200 N. Telegraph, Pontiac. Reception to meet the artists 6-8 p.m. Friday. Open during regular business hours, Monday-Friday.

● **JEWISH COMMUNITY CENTER**
Sunday, Jan. 26 — Paper-cut sculpture and paintings by Lee Bleifeld will be on display through Feb. 9. Reception to meet the artist 2-4 p.m. Sunday, 6600 West Maple, West Bloomfield.

● **SUSANNE HILBERRY GALLERY**
Show of works by Beatrice Wood, international master of luster ceramics. Continues through Feb. 22. Hours are 11 a.m. to 5 p.m. Tuesday-Saturday, 555 S. Woodward, Birmingham.

● **MARYGROVE COLLEGE GALLERY**
Works by Sister Edith Kenny, Edie Joseph, Charmaine Kaptur and Johanna Bielecki are on display through Feb. 7 as a part of the continuing series of alumni exhibits, 8425 W. McNichols, Detroit.

● **PHYLLIS KRAUSE GALLERY**
Among the art objects on display are 12th Century Khmer hands, antique ivory "doctor's lady," eagle dancer Ka-china doll, masks from Japan and Burma, wood carvings from Naga, The Philippines, New Guinea, China and Korea. As well there's tribal jewelry, puppets from Burma and Thailand, Ilong silks, kilim saddle bags, framed paper cutouts and stencils. Hours are 11 a.m. to 5 p.m. Tuesday-Saturday, 29 W. Lawrence, Pontiac.

● UNDERGROUND 245 GALLERY

Sculpture by Matthew Hanna and paintings by his brother, Mark Hanna, continue in the student-run gallery at Center of Creative Studies — College of Art and Design through Jan. 25. Hours are 9 a.m. to 4 p.m. weekdays, Yamasaki Building, 245 E. Kirby, Detroit.

● EXPRESSIONS GALLERY

Prints and drawings by Kim Bauer and Therese Laatsch. Continues through Feb. 8. Hours are 11 a.m. to 5 p.m. Tuesday-Saturday, 269 North Main, Charlestown Square, Plymouth.

● COMMUNITY HOUSE

Watercolors by Dorothy Delahanty are displayed throughout the building during January. She particularly likes doing flowers and plants. Open during regular hours, 380 S. Bates, Birmingham.

● SHELDON ROSS GALLERY

Show of drawings and prints continues through the month. Included are works by Beckman, Basso, Gross, Hafez, Kollwitz, Peckstein and Releg. Hours are 11 a.m. to 5 p.m. Tuesday-Saturday, 250 Martin, Birmingham.

● FOURTH GALLERY

Ceramics invitational features works by Adele Barres, Eric Becker, Dick Hoelt and Jeri Hollister, all members of the Michigan Guild of Artists and Artisans. Hours are 9 a.m. to 5 p.m. Monday-Friday, 118 N. Fourth Ave., between Huron and Ann, Ann Arbor.

● DETROIT FOCUS GALLERY

"Constructions," a mixed media event, was tried by Sam Gilliam, leading American artist. Continues through Feb. 8. Hours are noon to 6 p.m. Wednesday-Saturday, 743 Beaubien, Detroit.

● YAW GALLERY

Ceramics by John Donoghue, Craig Hinsbaw and Randy Misch continue through Feb. 12. Hours are 11 a.m. to 5 p.m. Tuesday-Saturday, 550 N. Woodward, Birmingham.

● DETROIT ARTISTS MARKET

Oils on canvas by Tom Parish and colored pencil drawings and oils by John Hegarty continue through Feb. 7. Both are members of the Wayne State fine arts faculty. Show of four young artists in the Upper Gallery, Jo Powers, Kathy Brackett, Lucie, Jello Perazza and Sandra Schemske. Hours

are 11 a.m. to 5 p.m. Tuesday-Saturday, 1452 Randolph, Detroit.

● 55 PETERBORO

"Things and Places," works by Sandra Newton, continue through the month. Hours are 2-6 p.m. Thursday-Saturday, 55 Peterboro, Detroit.

● PIERCE STREET GALLERY

"Quilted Reveries" by Francesca Lacagnina, begin with photographs that the artist takes, hand paints and adds to. Continues through February. Hours are 11 a.m. to 5 p.m. Wednesday-Saturday, 217 Pierce, Birmingham.

● BIRMINGHAM BLOOMFIELD ART ASSOCIATION

Traveling exhibit by the Michigan Watercolor Society continues through Feb. 1. Works by Frances Waring of Troy are featured in the Rental/Sales Gallery through the month. Waring's work has been in many regional, national and international exhibits. Hours are 9:30 a.m. to 4:30 p.m. Monday-Saturday, 1516 S. Cranbrook, Birmingham.

● PAINT CREEK CENTER FOR THE ARTS

Works by students, graduates and instructor, Joe Zajack, are in the exhibit of ceramics from Wayne State University. Hours are 10 a.m. to 5 p.m. Tuesday-Saturday, 407 Pine, Rochester.

Hours are 10 a.m. to 5 p.m. Tuesday-Saturday, 407 Pine, Rochester.

● DETROIT GALLERY OF CONTEMPORARY CRAFTS

Crafts invitational features the pots by 25 nationally known potters. Jobb, Glick and Michael Crumb are among the illustrious represented. Hours are 11 a.m. to 5 p.m. Monday-Saturday, 305 Fisher Building, Detroit.

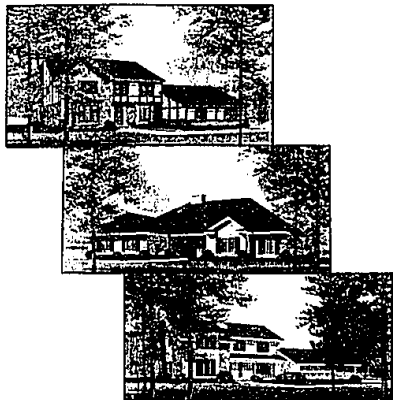
● SHOWCASE DUGLASS

Bronzes and other sculpture by Margaret Valpey are on display through January. Her subjects range from dancers, children and all kinds of interesting people to a wide variety of animals. Open during regular mealtime hours, 29269 Southfield Road, Southfield.

● TROY ART GALLERY

Group show includes paintings by Ross Arkel, Pat Boyer, Johanna Haus, Edie Joppick, Evelyn Raskin, Linda Zalla, ceramics by Carolyn Dulin, Jan Powers and Sharon Hubbard and Japanese woodblock prints. Hours are 11 a.m. to 5:30 p.m. Tuesday-Saturday, 755 W. Big Beaver, Troy.

Chelsea Place

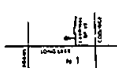


LOCATION, LOCATION, LOCATION!!

The location of choice in Troy could be the reason for the success of Chelsea Place. Then again, it could be the insistence of quality materials and workmanship throughout the home. Stop by today to enjoy our beautiful model.

Ranches and Colonials from \$155,000

OPEN
Daily & Weekends
1-6



Benecke & Krue
Development Corporation

641-7709

642-8686

You're living on top of the World. Ridgecrest at the Park



High above an established community of luxurious homes is an enclave of six exceptional homesites. Heavily wooded with a breathtaking tree-top view, these sites will be built with new home plans that preserve the natural contours of the land. Crafted by The Herman Frankel Organization, these homes contain innovative features, exciting details and spectacular views. Information is available now for Ridgecrest at the Park and other homes in The Park at Bloomfield Hills.

There are only 6 homesites on the ridge. See the new Ridgecrest model. From \$249,000. Model Phone: 626-3502. Main Office: 626-3500

See other models in The Park at Bloomfield Hills from \$249,900 (Bloomfield Hills Schools). The Park can be found west of Middlebelt Rd., south of Lane Pine Rd. Follow Woodcliff signs to information Center. Open noon to 6 p.m. every day, except Thursday. Sales by:



Merrill Lynch Realty



OPEN SUN. Jan. 28th 1-4 p.m. 648 Pheasant Run, N. off Long Lake, W. of Franklin. **DRAMATIC MULTI-LEVEL** condominium in prestigious Wabek Woods. Beautiful lake front. Floor plan flows nicely through 3 bedrooms, fireplace great room with soaring ceilings. Sconery! 851-8100 \$229,900



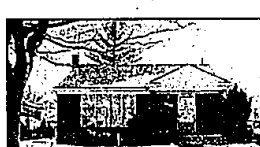
CHARMING WEST BLOOMFIELD ranch boasts fabulous master suite with dressing area, walk-in closet, spiral staircase to loft with skylights, 4 bedrooms, cozy family room with beamed ceiling and huge fenced yard. 851-8100 \$119,500



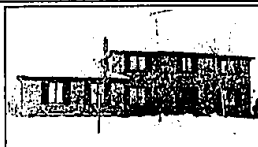
FIVE BEDROOM Cape Cod in prime Farmington location. Recently updated. New roof, furnace, carpeting, kitchen appliances and landscaping. Many extras in this special home. 626-9100 \$93,000



CRANBROOK VILLAGE SUB. Sharp custom quad level with hardwood floors, earthtone carpeting, 4 bedrooms and natural fireplace. All set on delightfully landscaped lot. Affordable comfort! 626-9100 \$72,900



SHARP STARTER HOME completely updated - hardwood floors, new kitchen, reo room and 3 bedrooms. Situated in Oak Park, this 1 story Cape Cod offers much potential. 626-9100 \$42,900



SHARP COLONIAL in Independence Hills subdivision. 4 bedrooms, huge inground pool, professionally landscaped, great kitchen with nook and grand fireplace. Extraordinary! 828-9100 \$199,900



GOLF COURSE VIEW from this Pilared colonial in West Bloomfield. Warm home offers circular staircase, marble fireplace, 4 bedrooms and bay window in living room. Nicely landscaped. 851-9100 \$139,700



CUSTOM RANCH in Southfield offers spacious kitchen, complete living in-law suite, loads of storage space in this 2,883 sq. ft. residence. Immaculate condition! 626-9100 \$89,000



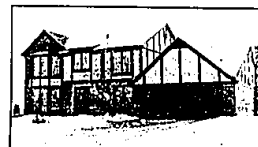
WEST BLOOMFIELD SCHOOLS. Nicely decorated 3 bedroom Ranch with canal frontage on all-sports Sylvan Lake offers fenced yard with patio and porch. Well landscaped with new seawall. 851-9100 \$71,900 (RWU)



COUNTRY LIVING in the CITY 3 bedroom ranch situated in Southfield offers treed lot, circular driveway, earthtone carpeting, freshly painted, new kitchen cabinets and more. Priced right! 626-9100 \$47,500



QUALITY COLONIAL in popular Covington by the Lake subdivision. Spacious living areas, fireplace family room with wet bar, finished basement. Bloomfield Hills Schools. 851-8100 \$170,000 (SWH)



DISTINCTIVE TUDOR on professionally landscaped setting. 4 bedroom home is like new. Tastefully decorated in neutral tones. French doors, brick fireplace and delightful gourmet kitchen. Splendid! 626-9100 \$149,500



FAMILY LIVING at its best! Elementary school in subdivision. This 3 bedroom colonial includes covered patio, central air, fireplace and prime Farmington Hills location. Neutral decor! 626-9100 \$86,900



CONTEMPORARY CONDOMINIUM situated in Farmington Hills. This 2 bedroom residence offers new carpeting, stucco ceiling, mirrored bar and neutral decor throughout. Spacious and in immaculate condition. 626-9100 \$75,500



EXCELLENT BUY! Great investment property with assumable mortgage, neutral decor in this brick ranch on large lot. Spacious kitchen, 2 car garage, 3 bedrooms and charming fenced yard. 626-9100 \$39,900

BIRMINGHAM	BLOOMFIELD HILLS	FARMINGTON HILLS	TROY	ROCHESTER	WEST BLOOMFIELD
975 S. Hunter at 14 th Mile Rd. 646-6000	1520 N. Woodward at Long Lake Rd. 647-5100	3050 Northcreek at 12 Mile Rd. 626-9100	5017 Rochester Rd. at Long Lake Rd. 689-8900	1000 W. University (in Meadowbrook Plaza) 651-8850	4316 Orchard Lake Rd. at Lane Pine Rd. 851-3100

OPEN MONDAY-FRIDAY 9 A.M.-7 P.M. SATURDAY 9 A.M.-5 P.M. OPEN SUNDAYS

