

exhibitions

PIERCE STREET GALLERY

Saturday, March 15 — "Diners — Food in the Fast Lane" is an exhibition of black and white photographs by Tom Baril. He drove the truck routes of the East Coast to find the streamlined silver diners. Continues through April 28. Hours are 11 a.m. to 5 p.m. Wednesday-Saturday, 217 Pierce, Birmingham.

RUBINER GALLERY

Friday, March 14 — Pastels and oils by Arthur Chaitow present exciting views of magnificent scenery — landscapes, lakescapes and seascapes. Reception for the artist 7-9 p.m. Friday. Continues through April 5. Hours are 10 a.m. to 5:30 p.m. Tuesday-Friday, until 5 p.m. Saturday, 7001 Orchard Lake, West Bloomfield.

PEWABIC POTTERY

Friday, March 14 — Functional stoneware by Val Cushing is on display through April 12. Opening reception and slide lecture 7:30 p.m. Friday. Hours are 10 a.m. to 5 p.m. Tuesday-Saturday, 10125 Jefferson, Detroit.

COMMUNITY ARTS GALLERY

Friday, March 14 — Master's degree exhibit by five Wayne State students continues through April 4. In addition to Aristotelia Kambouris of Southfield,

they are Michael Bowen, Bill Sanders and Deborah White of Detroit and Diane Rapach of Mount Clemens. Hours are 10 a.m. to 5 p.m. weekdays, Cass at Kirby, Detroit.

BLOOMFIELD FINE ARTS

Saturday, March 15 — Works by Michigan Roy C. Gamble, 1887-1972, are on display through March 29. Hours are 10 a.m. to 6 p.m. Tuesday-Saturday, lower level 280 N. Woodward, Birmingham.

BIRMINGHAM BLOOMFIELD ART ASSOCIATION

Saturday, March 15 — "Hot Glass," an exhibit of Michigan glass artists curated by Stuart Shulman and Albert Young, continues through April 5. This show is the first to herald Michigan glass month, which is April. Opening reception is 6:30-9 p.m. Saturday. Regular hours are 9:30 a.m. to 4:30 p.m. Monday-Saturday, 1516 S. Cranbrook, Birmingham.

CANTOR/LEMBERG GALLERY

Saturday, March 15 — Exhibit of new work, cast paper and collage, by Lester Johnson, Detroit artist, continues through April 5. From here to Kalamazoo and Saginaw. Hours are 11 a.m. to 5:30 p.m. Tuesday-Saturday, 538 N. Woodward, Birmingham.

day, 538 N. Woodward, Birmingham.

FEIGENSON GALLERY

Saturday, March 15 — Invitational exhibit of works by Douglas Bulka, Roy Castelberry, Joseph Grosspau, Theresa Herron, Chris Hughes, Wendy MacGaw, Shirley Parish, Jim Pujowski, David Snow, Gilda Snowden and Shirley Woodson continues through April 5. Reception 2-6 p.m. Saturday. Hours are 11 a.m. to 5 p.m. Tuesday-Saturday, 310 Fisher Building, Detroit.

JEWISH COMMUNITY CENTER

Sunday, March 16 — "Paper Cuts," by Sheila Weinberg, continues on display through March. Coffee reception to meet the artist 2-4 p.m. Sunday, 6600 West Maple, West Bloomfield.

SARKIS GALLERIES

Wednesday, March 19 — "Midwest Photography Invitational III" has works by 39 photographers, including the Center for Creative Studies faculty members, Douglas Jakenhead and John Ganis, on display through April 15. The galleries.

Water-media paintings and collage prints by Frances Waring are on display through March. The artist describes her work as semiabstract. Her paintings, inspired by Western travels,

are done in muted, earthy tones. Open during regular hours, 380 S. Bates, Birmingham.

O'NEILL POTTERY

Local artists are exhibiting their work in a historical, country atmosphere. Visitors may also browse in an artist's studio and classroom. The newly renovated barn, 1841 Crooks, a mile north of M-59, is 110 years old.

THE PRINT GALLERY

Neon sculpture by Brad Hurtado is on display. He rescues glass tubes from discarded signs and gives them new life. Hours are 10 a.m. to 6 p.m. Monday-Saturday, until 9 p.m. Thursday, 29203 Northwestern, Southfield.

55 PETERBORO

"Set My House on Fire" is the theme for a show of recent works by Dave Roberts and Mary Musinski. Continues through March 29. Hours are 2-6 p.m. Thursday-Saturday, 55 Peterboro, Detroit.

G.R.NAMDI GALLERY

Traditional African textiles, 1920-1950, on display through March 29. Curated by Eric Robertson, whose textiles are in many major museums. The ceremonial textiles are from Ghana, Nigeria and Zaire. Hours are 11 a.m. to 5:30 p.m. Tuesday-Saturday, David Whitney Building, 1553 Woodward, Detroit.

Home-flower show opens

The 1986 Builders Home, Flower and Furniture Show, March 15-23 at Cobo Hall of Detroit, will cover a record 400,000 feet of exhibit space. This makes it the largest of its kind in America, slated to attract 500,000 people.

More than 230 exhibitors will be participating and the gardens will cover three acres of floor space.

As landscape architect for the show, James C. Scott of James C. Scott Associates Inc. of Bloomfield Hills, is responsible designing the theme gardens which highlight the show and coordinating the 100-man crew which is building the three acres of gardens in four days.

A 1,400-square-foot Cape Cod-style house will be erected in Cobo Hall for the show. The design won the American Wood Council's "Design for Better Living" award. Stewart Elliott of Riverbend Timber Framing of Blissfield is the designer and manufacturer of the house.

The house with a base price of \$78,000, has three bedrooms, 1 1/2 baths, a modern floor plan and cathedral ceilings. Instead of nails or bolts, the timber framing is held together with wooden pegs.

Show hours are 10 a.m. to 11 p.m. Saturday and Sundays and 1-11 p.m. weekdays. Special discount tickets are available at Allied and PTD Florists, Elitas Brothers restaurants and Great Scott Supermarkets.

Bloomfield's Best kept Secret Is Out . . .

With its unique style and panache that lights up the eyes of avid condominium buyers, Foxcroft is fast becoming the talk of the town. It's little wonder. Since this exclusive halfway is surrounded by all the worldly luxuries that makes Bloomfield such a sought after address.

So come see these sprawling two- and three-bedroom residences that were built with care and attention rarely seen in this day and age.

Foxcroft is worth looking into today . . . especially since the secret is out! Priced from \$98,000.

FOXCROFT OF BLOOMFIELD

Foxcroft is tucked away behind the tall trees on the north side of Maple Road just west of Telegraph.

Model Open Daily and Weekends: 1 to 6 p.m. Closed Thursday 855-1066 (Model) or 626-2590 (Office)



Offered by: Morris Realty and Michigan Condominiums

Breathtaking Custom Homes for the Discriminating Buyer

The Hillsborough
In Chabond Villas, West Bloomfield

\$325,000

- Bloomfield Hills School
- Features master suite with marble faced fireplace, corner glass view, bath with whirlpool tub and en-suite shower
- 4 beds, suite with own bath
- 2 bedrooms, rooms share third full bath
- Formal powder room and adjacent hall in on 1st floor
- Third floor 4 closets/wardrobes
- Laminate 42" kitchen with corner glass, views and designer laminate, subway
- 1 major 3-story garden stairway
- Large upper garden terrace
- 21 x 21 ft. great room with 11 high ceilings, huge windows and natural mountain fireplace with marble face
- And much more!

nca
nolan/corhan
daniel/schultz
313-540-0377

It's A Wonderful Life at Meadowbrook Valley.

Designed for family living, Meadowbrook Valley has the features you're looking for at a price you can afford. The superb Rochester location offers you the wide-open feel of the country with the convenience of the city at your fingertips.

The natural wooded countryside and gently rolling hills are a perfect setting for this elegant community. A unique combination of architectural tradition and innovative amenities assures you of quality, luxury and lasting value.

Come to Meadowbrook Valley — it's a wonderful life. From \$150,000. Located on Ann Road between Adams & Crooks. Call 375-9911. Model Hours: M-F 12:30-6:30, Sat/Sun 12:30-6:00. Closed Thursday.

Meadowbrook Valley
CUSTOM BUILT BY:
S.R. JACOBSON DEVELOPMENT CORPORATION



WOULD YOU MISS THIS? Unique layout in unusual setting. This 3 bedroom with 2 car garage backs up to approximately 30 acre wooded area. Convenient to expressways yet somewhat countryfied. \$48,300, 477-1111.



SIMPLE ASSUMPTION on this 3 bedroom, 2 full bath, five year old colonial. Save on closing cost. Basement, 2 car attached garage and dock. Newly decorated — sparkling clean. \$74,900, 477-1111.



QUALITY CUSTOM RANCH on 3 beautiful acres, located near Kensington Park and across from State land. Barn built in 1978 has many possibilities. 3 bedrooms. Land Contract. \$132,000, 477-1111.



FOUR UNIT APT. BUILDING. One 1-bedroom and three 2-bedroom apartments in downtown Milford, all rented. Excellent location, walking distance to stores and churches. Owners will look at reasonable offers. \$85,000, 477-1111.



VERY SPECIAL 3 BEDROOM — roof and furnace 3 years old, wiring updated, steel entry doors both front and back, extra insulation added, extended drive, newer carpet. \$39,500, 477-1111.



NEW CONSTRUCTION. 4 bedroom, 2 1/2 bath brick and wood colonial. Backs to Commons area. Extra large family room with beamed cathedral ceiling and natural fireplace. \$121,900, 851-1900. (BR)



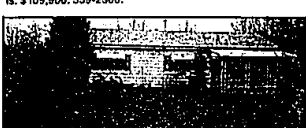
CUSTOM BUILT HOME. Charm and character describe this magnificent brick colonial. This home features an attractive neutral decor, ceramic tile foyer, family room with wet bar and fireplace. \$215,900, 851-1900. (DEE)



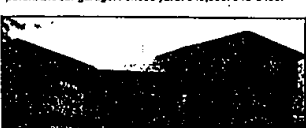
LAND CONTRACT. Modern ranch with everything. 3 bedrooms, family room with natural fireplace, 2 1/2 baths, central air, kitchen built-ins, 2 1/2 car attached garage. More. \$54,900, 559-2300.



A VERY BEAUTIFUL 4 BEDROOM RANCH. Custom built with many custom features. Finished basement. Cedar closet; kitchen newly redone, 2 car attached garage with door opener. Must see this home to realize how beautiful it is. \$109,900, 559-2300.



ATTRACTIVE 3 bedroom Ranch in Novi. Nice starter home or retirement home. Tastefully decorated. Screened rear porch. 2 1/2 car garage. Fenced yard. \$49,900, 348-6430.



5 BEDROOM, 2 1/2 bath Quad-level home on 1.53 acres. Great recreational area for family. \$84,900, 348-6430.



LOOK NO FURTHER — Immaculate Family Home. 4 bedroom colonial on treed lot. Hardwood floors. Extra insulation. Low heating bills. 2 car garage and finished basement. \$79,900, 681-5700.

HERE'S HOW WE FIND BUYERS FOR YOUR HOME



- 30 Metro Detroit offices
- Over 1000 proficient sales associates
- RELO - World Leader in Relocation
- Target Marketing just listed cards
- Largest advertiser in Observer & Eccentric
- Largest advertiser in Detroit News
- Distinctive For Sale signs
- Extensive open house weekly campaign
- Open house door hangers
- All city-wide multi-list services
- Institutional advertising
- Lifestyle newsletters
- Community Action Tours



FREE TRAINING*

Call one of our offices listed below to find out about the new pre-licensing classes beginning March 31st



EXCITING CONTEMPORARY! Colonial, beautiful private rear yard with creek. Walk-out lower level family room, game room, wet bar and wine cellar. Bloomfield Hills schools. \$215,000, 851-1900. (LON)



CANTON COLONIAL. 3 bedroom with family room. Bay window in living room, paneled family room with fireplace. Professionally landscaped. \$84,900, 851-1900. (TIL)



LOOK NO FURTHER — Immaculate Family Home. 4 bedroom colonial on treed lot. Hardwood floors. Extra insulation. Low heating bills. 2 car garage and finished basement. \$79,900, 681-5700.