

# Oakland's boom leading to road woes — Murphy

By Tim Richard  
Staff writer

Oakland's economic boom is leading to road problems that need attention, County Executive Daniel T. Murphy said in his state-of-the-county address.

"I will recommend soon that the board of commissioners approve \$20,000 to help with the funding of a county road study group. Its purpose is to study countywide road needs and to look for alternate methods of financing," according to a draft of Murphy's 12th address as executive.

Murphy stopped short of endorsing any of the half-dozen funding alternatives outlined earlier this year by the Oakland County Road Commission, which predicts hundreds of millions of dollars of road and bridge need in the next decade.

Committees of city officials also are at work studying road funding possibilities.

MURPHY WAS due Thursday morning to deliver his annual address to the 27 commissioners though he is in the middle of a campaign for the Republican nomination for governor.

Except for the road study proposal, his address was expected to contain few new proposals, aides said. He concentrated on Oakland's development boom and the need for road improvements.

County roads are under the jurisdiction of the semi-autonomous, three-member Road Commission, which gets its funds from a share of the state gasoline and weight taxes.

But because these perpetually run short, the Road Commission has gone to local and county general government for supplemental funds and so-called "tri-partite" programs.



*'Oakland County is known as the now center for research, innovation and creative technological achievements in manufacturing.'*

— Dan Murphy  
county executive

"LAST YEAR we attracted nearly two-thirds of all the office space built in Michigan," Murphy said. He placed employment in the county at 425,000 — "that's 45,000 more than ever worked here before."

And it's a diversified boom, he said: "Firms specializing in robotics, machine intelligence, software and sensor technology are investing millions of dollars monthly in Oakland."

"Companies in the county represent 40 percent of the U.S. robotics market, 40 percent of Michigan's top 50 high-tech companies and 28 percent of the state's new business corporations."

"Oakland County is known as the new center for research, innovation and creative technological achievements in manufacturing," he said, adding that auto companies are calling southeastern Michigan "Automation Alley."

"WE CAN BE thankful, but we must keep in mind that as we develop more jobs in Oakland, we create more use of our roads. This means more traffic, more upkeep and the demand for more roads."

"We must do something to assure new businesses and employees within the county and residents that we won't let the road problem get out of hand," Murphy said.

## SAVE 20% to 60% EVERY DAY ON FAMILY APPAREL



- All First Quality Apparel, No Seconds Or Irregulars
- Brand Name Merchandise

# 29<sup>99</sup>

COMPARABLE VALUE \$64

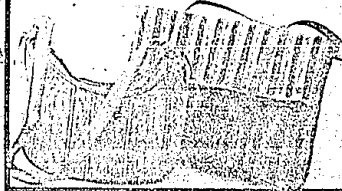
Versatile *shirtresses* in up-to-the-minute styles. Chemise or belted looks, button fronts, tie accents, other smart details. Of polyester/rayon in bright solid colors or two-tones. Ladies' sizes 6 to 16.

Illustrated styles represent the featured group. And Occasionery may not be available in all stores.

# 7<sup>99</sup>

COMPARABLE VALUE \$19

Smartly textured *Bonja* bags featuring clutches, top-handle, hobo styles. In natural tones.



# 14<sup>99</sup>

COMPARABLE VALUE UP TO \$27

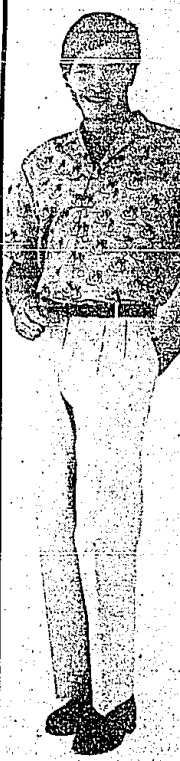
Girls' big top 'n pants sets in colorful prints of polyester/cotton. Sizes 7 to 14.



# 9<sup>99</sup>

COMPARABLE VALUE UP TO \$19

Men's famous maker sport shirts in summer prints. Sizes S to XL.



# 16<sup>99</sup>

COMPARABLE VALUE UP TO \$40

Men's double-pleated slacks by a famous maker. Color choice. Sizes 29 to 38.

- Private Dressing Rooms
- Convenient Layaway Service
- Helpful Sales Staff, 1-line Bank-style Checkout System
- We Accept Cash, Checks And Major Credit Cards

## designer depot

### fashions for less!

DAILY 10-9; SUNDAY 11-5

Charge it!

Use Our Convenient Layaway

ANN ARBOR Maple next to Kmart

CLAWSON 14 Mile at Crocker Rd.

FARMINGTON Middlebelt at 14 Mile

LIVONIA Wonderland Center Sunday 12-5

ROCHESTER Rochester Rd. at Tieren

ST. CLAIR SHORES Harper at 13 Mile

WARREN Van Dyke at 12 Mile

TAYLOR 7500 Telegraph Rd. Forest City Plaza

## Deadline April 22 for OCC candidates

Deadline is 4 p.m. Tuesday, April 22, for candidates to file petitions to run for trustee of Oakland Community College.

Three six-year terms will be filled at the non-partisan election of Monday, June 9, at the same time school districts hold their annual elections.

The terms of trustees David Hackett of Rochester, Margaret MacTavish of Birmingham and Edward Pappas of Farmington Hills expire June 30. None has announced for re-election.

Nominating petitions must contain the signatures of at least 50 but not

more than 200 registered voters. They must be filed with Anne Harrell, assistant to the chancellor, in OCC's Bee Administration Center, 2480 Opdyke, Bloomfield Hills.

Petition forms may be obtained through the office of college communications in the Bee Center or by calling 540-1540.

The seven-member board generally meets the fourth Thursday evening of each month. There is no pay. Trustees are elected at large from the OCC district, which roughly corresponds to Oakland County's boundary lines.

**drapery boutique**

**47% OFF WALLPAPER** 47% off - 150 selected Special Order Books in our library. Coupons valid at time of order only. No charges accepted. Minimum order \$50 at sale price, otherwise discount is 35%. Freight and handling added. Offer expires Sat. May 3, 1988.

**VERTICAL BLINDS**

SAVE UP TO **78%**

NOT ALL VERTICALS ARE CREATED EQUAL. Compare Quality, Selection, Service & Price before buying!

SELECTED: Shade Cloth • Aluminum • Macrame • P.V.C.

Discount	75% off	75% off	75% off	75% off	75% off
Rollers:	Shade Cloth	Aluminum	Macrame	Aluminum	Aluminum
Wid. & Hgt.	Comp.	Comp.	Comp.	Comp.	Comp.
72" x 84" 1 Way	\$135	\$178	\$127	\$158	\$125
109" x 84" 1 Way	\$255	\$339	\$245	\$312	\$232
100" x 84" 2 Way	\$222	\$295	\$210	\$278	\$205
119" x 84" 2 Way	\$255	\$339	\$245	\$312	\$232
64" W x 84" H one way draw	\$89	\$118	\$86	\$112	\$83
64" W x 84" H one way draw	\$89	\$118	\$86	\$112	\$83

OTHER CUSTOM SIZES AT EQUAL SAVINGS

**Horizontal Blinds**

1" HEAVY DUTY **68% off**

1" CONCORD **72% off**

1/2" MICRO MINI **67 1/2% off**

**custom draperies**

UP TO **40-60% off** • Prints • Solids • Sheers • Costumes

**ON IN STOCK FABRICS**

Styling with Imagination

Since 1969

**GRAND RIVER & HAGGERTY** 3825 Grand River • Daily 9:30-6:00 • Wed. & Thurs. 9:30-5:30 • Open Sat. 10:00-5:00

**ORCHARD & 14 MILE CENTER** 18954 Orchard Rd. • Daily 9:30-6:00 • Wed. & Thurs. 9:30-5:30 • Open Sat. 10:00-5:00

**drapery boutique**