

footprints in history

Deadline nears

Community contest spotlights local history

FARMINGTON ENTERPRISE founder Edgar Rollin Bloomer died in 1869, but I share one of his greatest loves: local history.

The timing certainly seems appropriate. This year, Botsford Inn is celebrating its sesquicentennial. Next year, the state of Michigan's turn to be a century and a half old.

ton Township's early years can enter. School children and senior citizens are especially encouraged to participate.

history books readily available in the Farmington Community Library.

cal Society and the Farmington Observer.

Drake Avery."

As any true history buff will attest, the history of Farmington Township — fore-runner to today's cities of Farmington and Farmington Hills — offers lots of captivating characters and milestone events.

The Observer's new Footprints in History column, which runs monthly, has been very well received.

AFTER CLIPPING this page, answer the questions identified in each of the three sections.

That's why we included a tiebreaker — a subjective question about how you view the value of local history.

FIRST PRIZE will be hardbound copies of two local history books:

Mail or drop off entries at the Farmington Observer's Downtown Farmington office, 33203 Grand River, Farmington 48024.

It's within that backdrop the Farmington Observer, in cooperation with the Farmington Historical Society, kicks off the first Farmington Footprints in History Contest.

The rules to enter the Farmington Footprints in History Contest are simple: Anyone with an interest in Farming-

Some questions you may be able to answer from memory. But this quiz wasn't designed to be easy.

The judging team will consist of representatives of the Farmington Historical Society and the Farmington Observer.

Second and third prizes will each be a softcover copy of "A Farmington Childhood: The Watercolors of Lillian Drake Avery."

Besides whatever enjoyment the contest may provide, you might find yourself deepening your appreciation for the early years of Farmington Township's development.

— Bob Sklar

A. In this part, answer each question as fully and concisely as possible. List your response on the line beneath each question. If unsure, guess!

People

Farmington. Who was she?

- 1. She was a dark-haired beauty who adopted a baby boy. The baby grew up and became the only governor of Michigan from Farmington in 1904. Who was he?
2. She grew up in Farmington, married her high school sweetheart and moved to Pontiac. There, she contributed a lot to Michigan history. She documented the Underground Railroad in Farmington in papers she prepared in the 1920s. Who was she?

- 4. Who was the first pioneer woman to come to Farmington and was the mother of the first "white" baby born here?
5. Who started the Farmington Ladies Literary Society, which was the forerunner of the Farmington Women's Club? She married a Canadian doctor who was traveling through Farmington.

8. Who was Farmington school superintendent from 1939 to 1943 and 1946 to 1956? He had a school named after him.

- 3. After a long trip to the Michigan frontier, she fell off a wagon and died of the injuries. She was the first pioneer woman to be buried in

- 6. Who was Farmington's first librarian?
7. Which black woman escaped from slavery in Virginia, then came to Farmington? She lived to be more than 100 years old and was Farmington's first centenarian.

9. He was a prosperous downtown businessman around the turn of the century. The 1915 building bearing his name still stands today on Grand River. Who was he?

apple growing in Farmington Township? The name was often misspelled with an extra "a."

Roads

- 1. What was Farmington's first main street, where local businesses, crafters and professionals were located in the 1830s?
2. The Detroit United Railway route to Pontiac ran beside this road between 1890 and 1930. People traveled this road to spend time at a resort hotel on a lake by the same name. What is the name of the road?
3. Which road was named by a pioneer family who were important in

4. Which road was the main street of North Farmington? There was a milk receiving station, two general stores, a school and a blacksmith shop along this road.

around the first grist mill in Farmington Township on this road. The road was named for a pioneer family. What is the name of the road?

5. Planned in the 1920s, this road was part of a super highway system in the Detroit metropolitan area. What is the name of the road?
6. Steepy Hollow was clustered

7. What is the name of the Detroit-Howell Plank Road?
8. What is the name of the area's first natural beauty road?

9. What was the previous name of Farmington Road within the village of Farmington?

Places

- 1. Near what intersection was the first tree felled in Farmington on March 8, 1824?
2. In what cemetery did the first burial in Farmington take place?
3. Near what modern intersection was the first tavern — the Walker, later the Wikom — located?
4. Where did Henry Ford court his future wife, Clara?
5. Where was the first post office located?

- 6. Where was Buckhorn Corners?
7. About 1869, Farmington had a race track. Where was it?
8. In the great fire of 1872, what area was burned out?
9. Where is the oldest house in the City of Farmington?
10. Where was a "centennial tree" planted in 1924?
11. Where did Farmington's War Memorial originally stand?
12. What was the original location of the Universalist Church, which is

- now on Halsted Road?
13. In which cemetery is Governor Warner buried?
14. What was the name of the historic hotel, widely known for high-quality entertainment, that, according to legend, served as a station on the Underground Railroad?
15. What was the later name of the old Farmington Dairy on Grand River?
16. What did the Potawatomi Indians call the area now known as Clarenceville?

Schools

- 1. Who was Farmington's first schoolmaster?
2. Who was the first female school teacher?
3. On what street was the first school located?

- 4. In what year were small local school districts consolidated into Farmington Public Schools?
5. What school burned down on Christmas Eve about six years ago?
6. What former school was converted into an attractive office building?

- 7. What was another name for the Coleman School, leveled during the building of I-696?
8. Where was Thayer School located?
9. What high school was named after a former school superintendent?

Politics

- 1. When did Farmington's three-term governor — Governor Warner — serve in Lansing as chief executive?
2. To what political party did Governor Warner belong?
3. Farmington Township's last su-

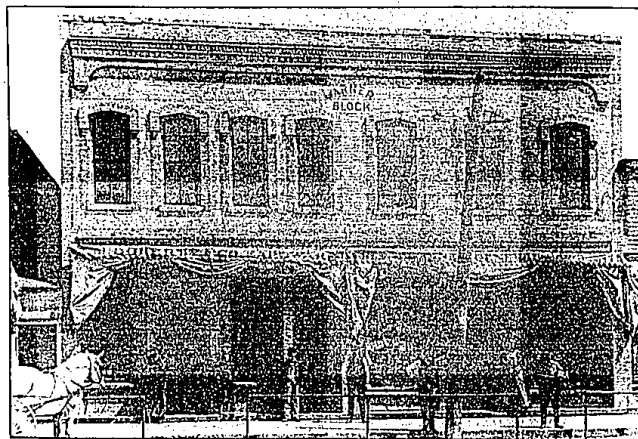
- pervisor and Farmington Hills' first mayor were the same man. Who was he?
4. Who was Farmington's state representative before Sandy Brotherton?
5. A Farmington man was chairman of the Oakland County Board of

- Supervisors for 16 years during the 1950s-1960s. Who was he?
6. In 1867, the speaker of the state House of Representatives was from Farmington. This man was also a delegate to the convention that re-wrote the state Constitution in 1867, which the voters rejected at the polls — overwhelmingly. Who was he?

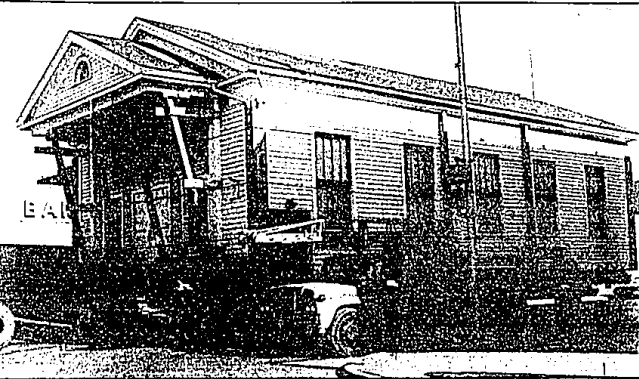
B. In this part, identify what is requested in the captions to each of these old photographs. Bonus: What year do you think each photo was taken? List your answer below each photo.



HINT: This man chronicled the activities and events of the day during the late 1800s in Farmington. Who was he?



HINT: This turn-of-the-century photo shows a day. Name at least two of the businesses currently housed in this building.



HINT: The oldest house of worship in Farmington this picture was taken in the summer of 1967. was moved from the city to a rural setting when What was the name of the church?

C. In this part, the spotlight is on the value of local history. Answer in 150 words or less the following question: What value do you place on having an understanding and an appreciation of local history? The content of your answer will count more than its literary prowess. Use additional paper, if necessary.

Blank lines for writing an answer to the question in section C.