

Greenhouse adds light

Take a tiny bungalow, somewhat dark and gloomy. Knock out the back wall to add a greenhouse enclosure and the wall between the kitchen and dining room. Redecorate with light colors and — with less effort than you might imagine — you've got yourself what seems like a new home!

And if your home could stand a little brightening up, you might wish to take note.

The bungalow suffered mainly from being partitioned into too many small rooms, and from a lack of windows. The first step was to remove a wall separating the kitchen and dining room and to install windows in the latter. Roman window shades reminiscent of striped awnings and a wide expanse of glass make eating in the dining alcove almost like picnicking. Outdoors and indoors merge in a pleasant al fresco setting.

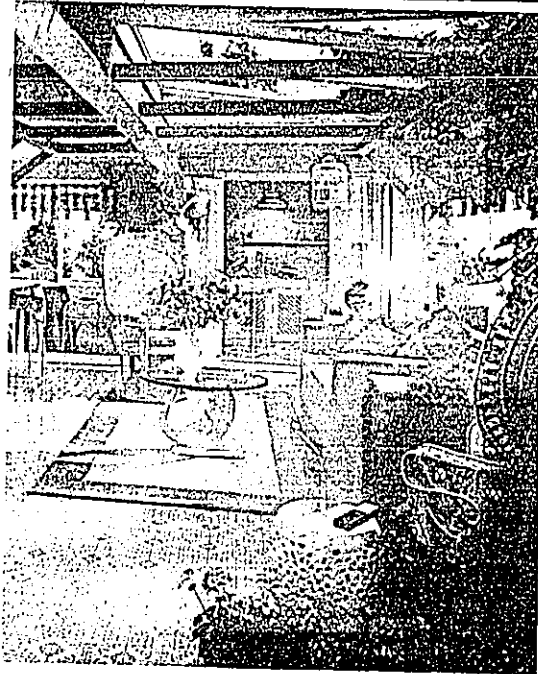
But the major undertaking involved extending the bungalow 7 feet for the "greenhouse enclosure" (a family room with the ambience of a greenhouse). Connecting with the kitchen, the new addition has sliding glass doors, a big skylight, and decorative wooden ribs that suggest

the structure of a greenhouse. Now, sunlight floods the whole multipurpose space: kitchen, dining alcove and family room.

Light colors are a sure bet to make any space seem larger and more cheerful, so they were chosen here. The color scheme was borrowed from the no-wax floor, which winds its way throughout the entire space. The no-wax floor serves as a "unifier," drawing together individual elements of the decor into a harmonious whole.

Walls and countertops are pale melon, and the trim and kitchen cabinets (glass-fronted to display the china) are off-white. The accent colors are rose (the cushions on the bar stools, throw pillows on the family room sofa, border of the area rug, fringed tablecloth in the dining alcove) and spring green (the ribs of the "greenhouse" and the many plants). All of these colors are found in the floor pattern.

The furnishings are pleasingly eclectic, mixing design influences from various centuries and continents. The hanging lamps are high-tech modern. Wicker chairs and the bamboo shape of the bar stools' legs hint of the Orient.



This flow-together space of kitchen, dining alcove and family room has the bright, sunny feel of a greenhouse. It's hard to believe it was once dark and gloomy.

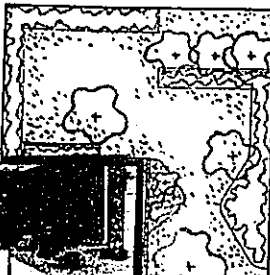


Once Upon a Spring...



Beauty Is our Business...

Landscape Design and Construction Since 1958



It's the people at Mueller's Sunrise Nursery who make the difference. Jeff Susick offers designs that are uniquely for your home. Rudy or Joe Mueller personally supervise every landscape construction in which the firm is involved. Rose Smith, Ernie Hickmott and Pat Mueller help you to personally choose the individual plant you need, or solve that environmental problem causing you a headache.

651-0039

4343 Twenty-four Mile Rd. Rochester



MUELLER'S SUNRISE NURSERY INC.

313 651-0039