

Local man was 1st state Civil War recruit

Ross Jacobs is a North Farmington High School senior.

By Ross Jacobs
special writer

At 4:30 a.m. on April 12, 1861, the flag of the United States of America was under siege. Fort Sumter, off the coast of Charleston, S.C., was being attacked by the Confederate States of America.

The president of the United States, Abraham Lincoln, requested that the governor of each state gather volunteers to put down the rebellion. Michigan's governor, Austin Blair, issued a proclamation on April 10, 1861, to organize the raising of four regiments for this service.

Patriotic young men all over the state flocked to enlist in the First Michigan Infantry Regiment. One of these brave young men was 20-year-old Andrew J. Crosby Jr. of Farmington Township.

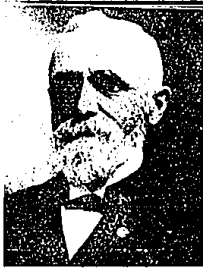
Crosby was an assistant teacher at the Bryant and Stratton's Business College in Detroit, his alma mater. He and his friends heard of the governor's proclamation and rushed to the enlistment office of the Detroit Light Guard. This young man from Farmington became the first Michigan soldier to enlist in the Civil War.

MICHIGAN'S ADJUTANT general selected 10 companies to serve in the First Michigan Infantry Regiment. Membership in these first companies was a highly valued position. Andrew J. Crosby was always very proud that he was the first private, in the first company, of the first regiment from Michigan.

Andrew J. Crosby Jr. was born in DeRuyter Township, Madison County, New York, on Sept. 9, 1840. He was the first of two sons born to Andrew J. Crosby Sr. and Lurana W. Miles, both natives of New York. The family lived in New York until Andrew was 4, at which time they moved to an unbroken tract of land in the heavily timbered region (today's Livonia). While in Livonia, Crosby attended the district school in Wayne County.

When he was 15, the family sold its land and moved to an improved farm in Farmington Township, where he attended Farmington Township's district school. His education also included a course from the State Normal School in Ypsilanti and classes at Bryant and Stratton's Business College in Detroit. Upon graduation, he took the position of assistant teacher.

Each of the 10 companies of the First Michigan Infantry Regiment



Andrew Crosby
first recruit

had its own uniform. These were discarded for a regimental uniform. This uniform consisted of "gray petershams for overcoats, navy blue for coats, and navy flannel for pants. The headgear was the familiar kepi or forage cap." Andrew Crosby and the Detroit Light Guard were armed with the Model 1855 Springfield Rifle Muskets.

THE REGIMENT'S organization was completed on April 29. Col. Orlando B. Wilcox, a popular Detroit lawyer and graduate of West Point, was given the position of commanding officer. On May 1, 1861, Andrew J. Crosby Jr. and his 797 fellow soldiers were mustered into the service of the United States for three months.

Before they were mustered into service, they were given a chance to resign. Few exercised this privilege, although it would have been most profitable. There were many applicants willing to pay for a place in this regiment. One man, John Stephen, went to the fort with his son Billy and offered to pay \$200 in gold to the man from Company A who would resign and give Billy his place.

The regiment arrived in Washington, D.C., at 10 p.m. on May 16. Their arrival was at a crucial time. Rebel flags were sighted from time to time across the Potomac on Arlington Heights. The loyal citizens of Washington were worried that there were not enough loyal Union troops to hold against a Confederate attack.

With the arrival of the First Michigan Infantry Regiment, these people breathed a sigh of relief. President Lincoln remarked, "Thank God for Michigan."

Golf card is offered

The price of teeing-off is making it difficult for many golfers to take advantage of the outstanding courses in our area. To combat this problem, the American Lung Association of Southeastern Michigan (ALASEM) will once again offer its golf privilege card, the card that offers free golf at 20 southeastern Michigan clubs.

This summer tradition gives golfers the opportunity to play at 20 of the finest and most challenging courses that the tri-county area has to offer.

A \$20 donation to ALASEM is all it takes to fulfill this golfer's "dream come true" super bargain golfing all

over southeastern Michigan for the entire 1986 golf season.

The Golf Privilege Card entitles its holders to one free round of golf at each of the participating courses. Restrictions do apply and are noted on the card.

For details on specific courses call ALASEM at 961-1697, Monday through Friday, 8:30 a.m. to 5 p.m. To order the card, send a \$20 check or money order payable to the American Lung Association of Southeastern Michigan 28 W. Adams, Detroit 48226. Be sure to enclose the name and address of the person to whom the card should be sent.

DISCOUNTS STRETCH YOUR BUYING DOLLAR
NEW 1st QUALITY CHILDREN'S CLOTHING
BIG DISCOUNTS on Little Clothing
FREE GIFT WITH PURCHASE AND COUPON
SABRINA'S CHILDREN'S CLOTHING
HOURS: MON. 10-6, TUE. 10-6, WED. 10-6, THUR. 10-6, FRI. 10-6, SAT. 10-6, SUN. 10-6
31200 FIVE MILE • LIVONIA • MERRI-FIVE PLAZA
MC and VISA WELCOME 522-0750

ANN'S HAIR DESIGN
25249 RAYBURN
5 Mile and Middlebelt Area
LIVONIA 422-9592
OPEN DAILY & EVERY EVENING • SAT. 9-5
ZOTOS
FOAM PERM Complete\$27
HAIRBETS\$18
PRECISION HAIRCUTS\$14
Senior Citizen 50+, 10% off
LIVONIA 422-9592
LIMITED TIME ONLY MON., TUES., WED.
OUR \$30 PERM \$22.50 WITH AD

Classic Interiors
Fine Furniture, Glass, Quality Craft Lamps
22255 Middlebelt Rd. (E. of 8 Mile)
Livonia • 474-8900
Mon., Thurs. & Fri. 10:00 a.m. OPEN SUNDAYS 14

footprints in history

COL. WILCOX led the advance of the Grand Army into Virginia. Andrew J. Crosby Jr. and the First Michigan Infantry Regiment were at the front as the army passed over the Long Bridge into Virginia.

This force subdued the rebel pickets and took possession of Alexandria. They captured a troop of Confederate cavalry and immediately took possession of the railroad depot. At the same time, Col. Elmer Ellsworth and his New York Fire Zouaves entered Alexandria by steamer. During the capturing of Alexandria, Col. Ellsworth was shot and killed. Andrew Crosby had the opportunity to view the body of the famed Ellsworth after his death.

Shortly after the capture of Alexandria, toward the end of May, Andrew Crosby became sick. He suffered greatly from the effects of diarrhea, dysentery and pleurisy. Many times, he wrote home requesting blackberry cordial to help ease the effects of the dysentery.

According to Nelson M. Farrar, a fellow member of the Detroit Light Guard, "Andrew J. Crosby Jr. in the

latter part of May 1861 was sick and sent to the hospital for about two weeks, he continued to suffer from diarrhea after he came back to the company and he was not assigned to duty but was very weak and sick."

ON JULY 21, 1861, the First Michigan Infantry Regiment fought in the battle of Bull Run (Manassas). It is likely that Andrew Crosby was hospitalized at this time and did not participate. His regiment, however, fought gallantly.

Soon after their defeat at Bull Run, the regiment and Crosby returned to Detroit and were mustered out of service on Aug. 7, 1861. Many of the men chose to remain in the service. Andrew Crosby, suffering from the effects of disease, did not rejoin.

Andrew J. Crosby Jr. returned to Farmington to help on his parents' farm. He was not much help due to the effects of the diseases he had contracted during the war.

On Dec. 31, 1862, Crosby married Mary B. Smith of Novi. For one year, the couple lived at the old

Crosby homestead in Farmington. In the spring of 1864, they moved to St. Johns, Clinton County, Crosby began teaching school and became a member of the Masonic fraternity.

After seven years in St. Johns, he taught for 2 1/2 years in Lyons, Iowa. They then moved to the farm where Mrs. Crosby was born. They remained on the farm, with the exception of two years in Pontiac where Andrew Crosby engaged in the mercantile business.

THE CROSBYS had three children. The eldest was Bertha I., born June 21, 1872. She later married Frank N. Steele. The next child was Flora N., born Jan. 18, 1879. She later married a man named Brannack and had one child, Jack. The third child, an infant, Lena A. died when quite young. The family attended the Universalist Church in Farmington (now located on Halsted Road).

Andrew J. Crosby Jr. became a prominent citizen in his later years. He was a member of the Masonic fraternity and belonged to Farmington Lodge, No. 151. In 1899, he served as a master. He took a great interest in politics and affiliated with the Republican Party. He was a lecturer for the State Grange of Michigan and held all the offices in the organization.

On Nov. 9, 1909, Andrew Crosby died. He and Gov. Fred Warner were standing talking on the main corner in Farmington. Crosby lit his cigar and fell to the ground. The cause of death was recorded as apoplexy. He was laid to rest in Oakwood Cemetery amongst many other honorable Farmington citizens.

Photo courtesy of "History of Farmington Lodge No. 151, F.&A.M. 1865 to 1965 by George R. Dorset, P.M.

LIVONIA True Value HARDWARE
MAKE PAPPY HAPPY

SALE \$69.88
Electric Power Blower/vacuum, convenient adjustable air intake, 2-speed motor switch, includes 12-in. 2-in. 3-in. 4-in. 5-in. 6-in. 8-in. 10-in. 12-in. 14-in. 16-in. 18-in. 20-in. 22-in. 24-in. 26-in. 28-in. 30-in. 32-in. 34-in. 36-in. 38-in. 40-in. 42-in. 44-in. 46-in. 48-in. 50-in. 52-in. 54-in. 56-in. 58-in. 60-in. 62-in. 64-in. 66-in. 68-in. 70-in. 72-in. 74-in. 76-in. 78-in. 80-in. 82-in. 84-in. 86-in. 88-in. 90-in. 92-in. 94-in. 96-in. 98-in. 100-in. 102-in. 104-in. 106-in. 108-in. 110-in. 112-in. 114-in. 116-in. 118-in. 120-in. 122-in. 124-in. 126-in. 128-in. 130-in. 132-in. 134-in. 136-in. 138-in. 140-in. 142-in. 144-in. 146-in. 148-in. 150-in. 152-in. 154-in. 156-in. 158-in. 160-in. 162-in. 164-in. 166-in. 168-in. 170-in. 172-in. 174-in. 176-in. 178-in. 180-in. 182-in. 184-in. 186-in. 188-in. 190-in. 192-in. 194-in. 196-in. 198-in. 200-in. 202-in. 204-in. 206-in. 208-in. 210-in. 212-in. 214-in. 216-in. 218-in. 220-in. 222-in. 224-in. 226-in. 228-in. 230-in. 232-in. 234-in. 236-in. 238-in. 240-in. 242-in. 244-in. 246-in. 248-in. 250-in. 252-in. 254-in. 256-in. 258-in. 260-in. 262-in. 264-in. 266-in. 268-in. 270-in. 272-in. 274-in. 276-in. 278-in. 280-in. 282-in. 284-in. 286-in. 288-in. 290-in. 292-in. 294-in. 296-in. 298-in. 300-in. 302-in. 304-in. 306-in. 308-in. 310-in. 312-in. 314-in. 316-in. 318-in. 320-in. 322-in. 324-in. 326-in. 328-in. 330-in. 332-in. 334-in. 336-in. 338-in. 340-in. 342-in. 344-in. 346-in. 348-in. 350-in. 352-in. 354-in. 356-in. 358-in. 360-in. 362-in. 364-in. 366-in. 368-in. 370-in. 372-in. 374-in. 376-in. 378-in. 380-in. 382-in. 384-in. 386-in. 388-in. 390-in. 392-in. 394-in. 396-in. 398-in. 400-in. 402-in. 404-in. 406-in. 408-in. 410-in. 412-in. 414-in. 416-in. 418-in. 420-in. 422-in. 424-in. 426-in. 428-in. 430-in. 432-in. 434-in. 436-in. 438-in. 440-in. 442-in. 444-in. 446-in. 448-in. 450-in. 452-in. 454-in. 456-in. 458-in. 460-in. 462-in. 464-in. 466-in. 468-in. 470-in. 472-in. 474-in. 476-in. 478-in. 480-in. 482-in. 484-in. 486-in. 488-in. 490-in. 492-in. 494-in. 496-in. 498-in. 500-in. 502-in. 504-in. 506-in. 508-in. 510-in. 512-in. 514-in. 516-in. 518-in. 520-in. 522-in. 524-in. 526-in. 528-in. 530-in. 532-in. 534-in. 536-in. 538-in. 540-in. 542-in. 544-in. 546-in. 548-in. 550-in. 552-in. 554-in. 556-in. 558-in. 560-in. 562-in. 564-in. 566-in. 568-in. 570-in. 572-in. 574-in. 576-in. 578-in. 580-in. 582-in. 584-in. 586-in. 588-in. 590-in. 592-in. 594-in. 596-in. 598-in. 600-in. 602-in. 604-in. 606-in. 608-in. 610-in. 612-in. 614-in. 616-in. 618-in. 620-in. 622-in. 624-in. 626-in. 628-in. 630-in. 632-in. 634-in. 636-in. 638-in. 640-in. 642-in. 644-in. 646-in. 648-in. 650-in. 652-in. 654-in. 656-in. 658-in. 660-in. 662-in. 664-in. 666-in. 668-in. 670-in. 672-in. 674-in. 676-in. 678-in. 680-in. 682-in. 684-in. 686-in. 688-in. 690-in. 692-in. 694-in. 696-in. 698-in. 700-in. 702-in. 704-in. 706-in. 708-in. 710-in. 712-in. 714-in. 716-in. 718-in. 720-in. 722-in. 724-in. 726-in. 728-in. 730-in. 732-in. 734-in. 736-in. 738-in. 740-in. 742-in. 744-in. 746-in. 748-in. 750-in. 752-in. 754-in. 756-in. 758-in. 760-in. 762-in. 764-in. 766-in. 768-in. 770-in. 772-in. 774-in. 776-in. 778-in. 780-in. 782-in. 784-in. 786-in. 788-in. 790-in. 792-in. 794-in. 796-in. 798-in. 800-in. 802-in. 804-in. 806-in. 808-in. 810-in. 812-in. 814-in. 816-in. 818-in. 820-in. 822-in. 824-in. 826-in. 828-in. 830-in. 832-in. 834-in. 836-in. 838-in. 840-in. 842-in. 844-in. 846-in. 848-in. 850-in. 852-in. 854-in. 856-in. 858-in. 860-in. 862-in. 864-in. 866-in. 868-in. 870-in. 872-in. 874-in. 876-in. 878-in. 880-in. 882-in. 884-in. 886-in. 888-in. 890-in. 892-in. 894-in. 896-in. 898-in. 900-in. 902-in. 904-in. 906-in. 908-in. 910-in. 912-in. 914-in. 916-in. 918-in. 920-in. 922-in. 924-in. 926-in. 928-in. 930-in. 932-in. 934-in. 936-in. 938-in. 940-in. 942-in. 944-in. 946-in. 948-in. 950-in. 952-in. 954-in. 956-in. 958-in. 960-in. 962-in. 964-in. 966-in. 968-in. 970-in. 972-in. 974-in. 976-in. 978-in. 980-in. 982-in. 984-in. 986-in. 988-in. 990-in. 992-in. 994-in. 996-in. 998-in. 1000-in. 1002-in. 1004-in. 1006-in. 1008-in. 1010-in. 1012-in. 1014-in. 1016-in. 1018-in. 1020-in. 1022-in. 1024-in. 1026-in. 1028-in. 1030-in. 1032-in. 1034-in. 1036-in. 1038-in. 1040-in. 1042-in. 1044-in. 1046-in. 1048-in. 1050-in. 1052-in. 1054-in. 1056-in. 1058-in. 1060-in. 1062-in. 1064-in. 1066-in. 1068-in. 1070-in. 1072-in. 1074-in. 1076-in. 1078-in. 1080-in. 1082-in. 1084-in. 1086-in. 1088-in. 1090-in. 1092-in. 1094-in. 1096-in. 1098-in. 1100-in. 1102-in. 1104-in. 1106-in. 1108-in. 1110-in. 1112-in. 1114-in. 1116-in. 1118-in. 1120-in. 1122-in. 1124-in. 1126-in. 1128-in. 1130-in. 1132-in. 1134-in. 1136-in. 1138-in. 1140-in. 1142-in. 1144-in. 1146-in. 1148-in. 1150-in. 1152-in. 1154-in. 1156-in. 1158-in. 1160-in. 1162-in. 1164-in. 1166-in. 1168-in. 1170-in. 1172-in. 1174-in. 1176-in. 1178-in. 1180-in. 1182-in. 1184-in. 1186-in. 1188-in. 1190-in. 1192-in. 1194-in. 1196-in. 1198-in. 1200-in. 1202-in. 1204-in. 1206-in. 1208-in. 1210-in. 1212-in. 1214-in. 1216-in. 1218-in. 1220-in. 1222-in. 1224-in. 1226-in. 1228-in. 1230-in. 1232-in. 1234-in. 1236-in. 1238-in. 1240-in. 1242-in. 1244-in. 1246-in. 1248-in. 1250-in. 1252-in. 1254-in. 1256-in. 1258-in. 1260-in. 1262-in. 1264-in. 1266-in. 1268-in. 1270-in. 1272-in. 1274-in. 1276-in. 1278-in. 1280-in. 1282-in. 1284-in. 1286-in. 1288-in. 1290-in. 1292-in. 1294-in. 1296-in. 1298-in. 1300-in. 1302-in. 1304-in. 1306-in. 1308-in. 1310-in. 1312-in. 1314-in. 1316-in. 1318-in. 1320-in. 1322-in. 1324-in. 1326-in. 1328-in. 1330-in. 1332-in. 1334-in. 1336-in. 1338-in. 1340-in. 1342-in. 1344-in. 1346-in. 1348-in. 1350-in. 1352-in. 1354-in. 1356-in. 1358-in. 1360-in. 1362-in. 1364-in. 1366-in. 1368-in. 1370-in. 1372-in. 1374-in. 1376-in. 1378-in. 1380-in. 1382-in. 1384-in. 1386-in. 1388-in. 1390-in. 1392-in. 1394-in. 1396-in. 1398-in. 1400-in. 1402-in. 1404-in. 1406-in. 1408-in. 1410-in. 1412-in. 1414-in. 1416-in. 1418-in. 1420-in. 1422-in. 1424-in. 1426-in. 1428-in. 1430-in. 1432-in. 1434-in. 1436-in. 1438-in. 1440-in. 1442-in. 1444-in. 1446-in. 1448-in. 1450-in. 1452-in. 1454-in. 1456-in. 1458-in. 1460-in. 1462-in. 1464-in. 1466-in. 1468-in. 1470-in. 1472-in. 1474-in. 1476-in. 1478-in. 1480-in. 1482-in. 1484-in. 1486-in. 1488-in. 1490-in. 1492-in. 1494-in. 1496-in. 1498-in. 1500-in. 1502-in. 1504-in. 1506-in. 1508-in. 1510-in. 1512-in. 1514-in. 1516-in. 1518-in. 1520-in. 1522-in. 1524-in. 1526-in. 1528-in. 1530-in. 1532-in. 1534-in. 1536-in. 1538-in. 1540-in. 1542-in. 1544-in. 1546-in. 1548-in. 1550-in. 1552-in. 1554-in. 1556-in. 1558-in. 1560-in. 1562-in. 1564-in. 1566-in. 1568-in. 1570-in. 1572-in. 1574-in. 1576-in. 1578-in. 1580-in. 1582-in. 1584-in. 1586-in. 1588-in. 1590-in. 1592-in. 1594-in. 1596-in. 1598-in. 1600-in. 1602-in. 1604-in. 1606-in. 1608-in. 1610-in. 1612-in. 1614-in. 1616-in. 1618-in. 1620-in. 1622-in. 1624-in. 1626-in. 1628-in. 1630-in. 1632-in. 1634-in. 1636-in. 1638-in. 1640-in. 1642-in. 1644-in. 1646-in. 1648-in. 1650-in. 1652-in. 1654-in. 1656-in. 1658-in. 1660-in. 1662-in. 1664-in. 1666-in. 1668-in. 1670-in. 1672-in. 1674-in. 1676-in. 1678-in. 1680-in. 1682-in. 1684-in. 1686-in. 1688-in. 1690-in. 1692-in. 1694-in. 1696-in. 1698-in. 1700-in. 1702-in. 1704-in. 1706-in. 1708-in. 1710-in. 1712-in. 1714-in. 1716-in. 1718-in. 1720-in. 1722-in. 1724-in. 1726-in. 1728-in. 1730-in. 1732-in. 1734-in. 1736-in. 1738-in. 1740-in. 1742-in. 1744-in. 1746-in. 1748-in. 1750-in. 1752-in. 1754-in. 1756-in. 1758-in. 1760-in. 1762-in. 1764-in. 1766-in. 1768-in. 1770-in. 1772-in. 1774-in. 1776-in. 1778-in. 1780-in. 1782-in. 1784-in. 1786-in. 1788-in. 1790-in. 1792-in. 1794-in. 1796-in. 1798-in. 1800-in. 1802-in. 1804-in. 1806-in. 1808-in. 1810-in. 1812-in. 1814-in. 1816-in. 1818-in. 1820-in. 1822-in. 1824-in. 1826-in. 1828-in. 1830-in. 1832-in. 1834-in. 1836-in. 1838-in. 1840-in. 1842-in. 1844-in. 1846-in. 1848-in. 1850-in. 1852-in. 1854-in. 1856-in. 1858-in. 1860-in. 1862-in. 1864-in. 1866-in. 1868-in. 1870-in. 1872-in. 1874-in. 1876-in. 1878-in. 1880-in. 1882-in. 1884-in. 1886-in. 1888-in. 1890-in. 1892-in. 1894-in. 1896-in. 1898-in. 1900-in. 1902-in. 1904-in. 1906-in. 1908-in. 1910-in. 1912-in. 1914-in. 1916-in. 1918-in. 1920-in. 1922-in. 1924-in. 1926-in. 1928-in. 1930-in. 1932-in. 1934-in. 1936-in. 1938-in. 1940-in. 1942-in. 1944-in. 1946-in. 1948-in. 1950-in. 1952-in. 1954-in. 1956-in. 1958-in. 1960-in. 1962-in. 1964-in. 1966-in. 1968-in. 1970-in. 1972-in. 1974-in. 1976-in. 1978-in. 1980-in. 1982-in. 1984-in. 1986-in. 1988-in. 1990-in. 1992-in. 1994-in. 1996-in. 1998-in. 2000-in. 2002-in. 2004-in. 2006-in. 2008-in. 2010-in. 2012-in. 2014-in. 2016-in. 2018-in. 2020-in. 2022-in. 2024-in. 2026-in. 2028-in. 2030-in. 2032-in. 2034-in. 2036-in. 2038-in. 2040-in. 2042-in. 2044-in. 2046-in. 2048-in. 2050-in. 2052-in. 2054-in. 2056-in. 2058-in. 2060-in. 2062-in. 2064-in. 2066-in. 2068-in. 2070-in. 2072-in. 2074-in. 2076-in. 2078-in. 2080-in. 2082-in. 2084-in. 2086-in. 2088-in. 2090-in. 2092-in. 2094-in. 2096-in. 2098-in. 2100-in. 2102-in. 2104-in. 2106-in. 2108-in. 2110-in. 2112-in. 2114-in. 2116-in. 2118-in. 2120-in. 2122-in. 2124-in. 2126-in. 2128-in. 2130-in. 2132-in. 2134-in. 2136-in. 2138-in. 2140-in. 2142-in. 2144-in. 2146-in. 2148-in. 2150-in. 2152-in. 2154-in. 2156-in. 2158-in. 2160-in. 2162-in. 2164-in. 2166-in. 2168-in. 2170-in. 2172-in. 2174-in. 2176-in. 2178-in. 2180-in. 2182-in. 2184-in. 2186-in. 2188-in. 2190-in. 2192-in. 2194-in. 2196-in. 2198-in. 2200-in. 2202-in. 2204-in. 2206-in. 2208-in. 2210-in. 2212-in. 2214-in. 2216-in. 2218-in. 2220-in. 2222-in. 2224-in. 2226-in. 2228-in. 2230-in. 2232-in. 2234-in. 2236-in. 2238-in. 2240-in. 2242-in. 2244-in. 2246-in. 2248-in. 2250-in. 2252-in. 2254-in. 2256-in. 2258-in. 2260-in. 2262-in. 2264-in. 2266-in. 2268-in. 2270-in. 2272-in. 2274-in. 2276-in. 2278-in. 2280-in. 2282-in. 2284-in. 2286-in. 2288-in. 2290-in. 2292-in. 2294-in. 2296-in. 2298-in. 2300-in. 2302-in. 2304-in. 2306-in. 2308-in. 2310-in. 2312-in. 2314-in. 2316-in. 2318-in. 2320-in. 2322-in. 2324-in. 2326-in. 2328-in. 2330-in. 2332-in. 2334-in. 2336-in. 2338-in. 2340-in. 2342-in. 2344-in. 2346-in. 2348-in. 2350-in. 2352-in. 2354-in. 2356-in. 2358-in. 2360-in. 2362-in. 2364-in. 2366-in. 2368-in. 2370-in. 2372-in. 2374-in. 2376-in. 2378-in. 2380-in. 2382-in. 2384-in. 2386-in. 2388-in. 2390-in. 2392-in. 2394-in. 2396-in. 2398-in. 2400-in. 2402-in. 2404-in. 2406-in. 2408-in. 2410-in. 2412-in. 2414-in. 2416-in. 2418-in. 2420-in. 2422-in. 2424-in. 2426-in. 2428-in. 2430-in. 2432-in. 2434-in. 2436-in. 2438-in. 2440-in. 2442-in. 2444-in. 2446-in. 2448-in. 2450-in. 2452-in. 2454-in. 2456-in. 2458-in. 2460-in. 2462-in. 2464-in. 2466-in. 2468-in. 2470-in. 2472-in. 2474-in. 2476-in. 2478-in. 2480-in. 2482-in. 2484-in. 2486-in. 2488-in. 2490-in. 2492-in. 2494-in. 2496-in. 2498-in. 2500-in. 2502-in. 2504-in. 2506-in. 2508-in. 2510-in. 2512-in.