

The barn was never known by any other name than just "the barn," used as a church by 80 Presbyterian families who purchased the structure on five acres of property in 1955.

## Church barn

### Rustic landmark succumbs to the wrecker

By Victoria Day Najjar  
special writer

Early this month the original First Presbyterian Church of Farmington, a barn, was demolished.

"It had gone full cycle," said Reta Mosshamer, longtime church member, "it represented a life history of many Farmington families."

In 1955, approximately 80 Farmington Presbyterian families purchased five acres of land at 11 Mile and Farmington Roads. Church ser-

vices were conducted in the structure on the property known simply as "the barn."

"We lovingly called it the barn," said Mosshamer, "even when we worshipped there."

The minister, Richard Geiger, who also was an architect, redesigned the interior of the barn. Church members made his design a reality: they rebuilt the interior of the barn and made adjustments to the exterior. The result was a sanctuary which

was the site of many baptisms, weddings, funerals and church socials.

"Many a child that was baptised in that barn was married in the church," said Mosshamer.

THE BARN was cool in summer, as uncurtained windows allowed the breeze to pass and cozy and warm in winter during candlelit services, recalled Mosshamer. The barn had a balcony in which church members could sit during Sunday services and a sacristy, with a side entrance for the minister. As church membership flourished, a second Sunday worship service was added.

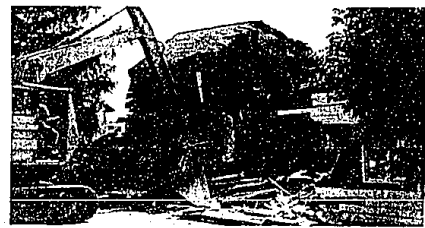
After construction in 1961 of the present First Presbyterian Church of Farmington, the barn was the location of many youth basketball games, summer church school classes or seasonal gatherings, such as Easter egg coloring.

A large hall, named Fellowship Hall, was added to the church in 1972, rendering the barn obsolete for most church gatherings.

"Renovation would be more expensive than current use could justify," said Edgar Mosshamer, member of the church's property committee which ordered the demolition of the barn. Mosshamer said the floor and roof needed extensive work; it was also thought that the barn might be a fire hazard.

Demolition took about 40 minutes and cost approximately \$4,000.

The barn will be remembered for its rustic charm, its historic value, and most of all as the site of many meaningful congregational gatherings of members of the First Presbyterian Church of Farmington.



On-lookers described the structure as "going pool" during the demolition (at left and above) that took 40 minutes.

Canadian Fur Specialist for Over 60 Years

### Furs by Arpin

• Duty & Sales  
Tax Refunded

• Full Premium On  
American Funds

484 Pelissier St. • Windsor  
1-519-253-5612



Give me a few hours of your time, and I'll show you how to get rich slow.

You are invited to enroll in this dynamic 3-week series. A learning experience you can't afford to miss offered at no cost.

**BIRMINGHAM**  
THE COMMUNITY HOUSE  
300 South Bates  
Mon., August 4, 11 & 18  
7:00-9:00 p.m.

**DEARBORN**  
THE FAIRLANE CLUB  
5000 Fairlane Woods Drive  
Thurs., August 7, 14 & 21  
7:00-9:00 p.m.

CALL 540-4900 for Reservations

**Siewwright & Co.** 100-00

6785 North Telegraph Road, Birmingham, MI 48010

Mr. Siewwright is a Registered Representative of Mutual Service Corp., which is a member of the NASD, Inc.

• Rosewood  
• Teak  
• Leather



Home  
Office

**FURNITURE WAREHOUSE**  
scandinavian/u.s. trading company

### SUMMER SALE

Save on Floor Samples & Special Orders

### 40% to 70% OFF

LAY-A-WAY PLAN AVAILABLE

FREE DELIVERY ON ORDERS OVER \$500 (UP TO 25 MILES)

Call PAUL BRASCH (former Brasch Imports) 543-5410 720 W. Eighth Mile  
14 Mile W. of Woodbury Ferndale

Business Hours: Mon. & Thurs. 10-6 Tues. Wed. Fri. & Sat. 12-6 Sun. 12-4

### The Barn

Falling down  
Like a stroke victim  
A victim of weakness and old age

Down, losing, gone  
Dust and broken glass, ash  
Heaps of broken wood  
To be swept away

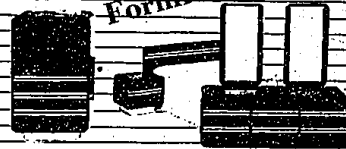
To be remembered  
For its sanctuary  
As one remembers  
A friend of longstanding goodness  
Gone ...  
But not forgotten.

July 7, 1986  
3:45 p.m.

Victoria Day Najjar



### The Fabulous Formica



### Underpriced

Bedrooms • Dining Rooms

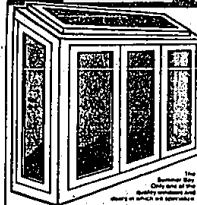
"We Discount Luxury"

*Charles*

**CHARLES FURNITURE WAREHOUSE**  
222 E. HARRISON • ROYAL OAK • 399-8320  
6 Blocks N. of 10 Mile, 1/4 block E. off Main  
OPEN MON.-SAT. 10-5 • FRIDAY 'TIL 6 P.M.

**WE WILL BUY**  
Your fine jewelry and precious gems.  
Immediate payment. Fully insured consignment arrangements available.  
By Appointment • 643-2650  
**GREENSTONE'S**  
Creators of fine jewelry for over 40 years  
328 N. Woodward • Birmingham  
Mon. thru Fri. 9:30-6:00, Sat. until 5:00

The QUALITY of PELLA  
The DEPENDABILITY  
of DeSCHUTTER



Call us for a FREE ESTIMATE

**DeSchutter Associates, Inc.**  
at Huntington Woods  
542-9100

Twice a week is better O-T

"One of Michigan's Largest"

**PIANO & ORGAN EXCHANGE**

TRUST THROUGH CUSTOMER EDUCATION  
We explain...  
• Soundboards  
• Actions  
• Cabinet Quality  
• Manufacturers  
• Buy Straight From the Owner

OVER 100 PIANOS ON DISPLAY  
Everett, Kimball, Sanchez, Baldwin, Wurlitzer, Waters, Schenck, Yamaha, Kawai, Young, Chandon, Chickering, Steiner.

**RENT TO OWN A PIANO**  
\$39 per month  
329 W. 14 Mile • Clawson  
Bet. Crooks & Livernois  
288-1750

### Getting settled made simple.

New-town dilemmas fade after a WELCOME WAGON call.

As your hostess, it's my job to help you make the most of your new neighborhood. Our shopping area. Community opportunities. Special attractions. Lots of facts to save you time and money. Plus a basket of gifts for your family. I'll be listening for your call.

*Welcome Wagon*



CALL  
**356-7720**

**Frank H. Boos Gallery**  
ART • JEWELRY • APPRAISALS

420 Enterprise Court • 332-1500  
Bloomfield Hills, Mi. 48013

**Christmas in July**  
Ends Saturday!  
Get in the spirit now...and capture savings that will be long gone when Santa comes to town!  
100's of Selected Items in All Departments 10-40% Off  
ASK FOR DETAILS on how your purchase can contribute towards a \$100 GIFT CERTIFICATE in OUR ACCUMULATIVE PURCHASE DISCOUNT PROGRAM.

**The Doll Hospital & Toy Soldier Shop**  
3947 W. 12 Mile • Berkley • 543-3115

**Atlantic Drapery Shoppe**

**DRAPERY SALE**

Labor \$8 Per Panel

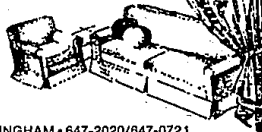
Special Prices Available on Drapery,

Silpcover & Upholstery Fabrics

BEST PRICES ON VERTICAL & HORIZONTAL BLINDS

Custom Spreads  
Custom Silpcovers  
(Labor Special)

CHAIR - \$89  
SOFA - \$109



360 E. MAPLE • BIRMINGHAM • 647-2020/647-0721