

Coming
September 25
thru October 12...

HOMEARAMA '87

12 new homes
you should see
and
1000 ideas
you can use!

DEER CREEK

developed by Baltimore Properties

SHEFFIELD II
Baltimore
Properties Corp.
Troy
476-9300

KNOTTINGHAM
Hemphill & Felt
Troy
879-0866

NEWPORT
Curtis Building
Company
Livonia
476-9300

ROYALCREST
Pinewood
Homes, Inc.
West Bloomfield
851-9117

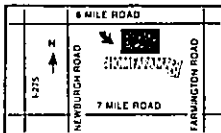
THE GRANDVILLE
Leo Soave
Building Co.
Livonia
591-0824

CLASSIC CRANBROOK
Long Lake
Building Co.
Farmington Hills
471-5988

HOURS:
Noon-10 pm daily
10 am-10 pm Sat. & Sun.

Go through 12 of the most original and exciting new homes, each beautifully furnished and landscaped, each incorporating a multitude of practical new ideas. A must for homeowners and anyone who plans to buy a home or decorate a condo or apartment.

Deer Creek on Eight Mile Rd. between Farmington and Newburgh Rds. in Livonia.



Admission \$4.00

A portion of the ticket proceeds go to support the Detroit Symphony Orchestra.

Discount coupons available at Standard Federal Bank and Detroit Edison.

SPONSORED BY:



For Information
Phone **569-0644**

VILLA AMORE
James D. Compo, Inc.
Farmington Hills
474-0499
"Symphony Home"

TUDOR
Banadeo Builders
Detroit
535-8133

DORCHESTER
Baltimore
Properties Corp.
Troy
476-9300

HACIENDA DEL REY
G.W. Homes, Inc.
West Bloomfield
855-6039

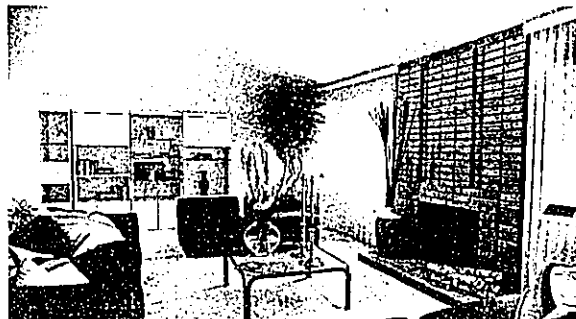
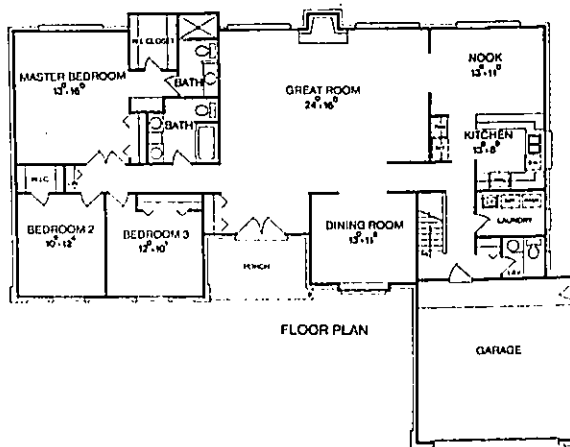
THE PARKVIEW
Leo Soave
Building Co.
Livonia
591-0824

THE DEVONSHIRE
Rosedale
Homes, Inc.
St. Clair Shores
776-3006



The Parkview

A traditional ranch, the Parkview offers three bedrooms and 2 1/2 baths. The living room has vaulted ceilings and custom natural brick fireplace. Crown mouldings are used throughout the 2,080-square-foot home by Leo Soave Building Co. The large open kitchen/nook also has vaulted ceilings and a bay window in the sink area. A window wall from the nook leads to deck overlooking a wooded area. The master bedroom suite has a vaulted ceiling and Casablanca ceiling fan. The master bath includes vanity/dressing area, walk-in closet, shower and all-ceramic tile. The house has a full basement. It is in the \$160,000-\$185,000 price range.



BILL DRESLER/staff photographer

Elegant

The living room in the Parkview is done in neutral tones highlighted with black and white accents. It is indicative of the clean and clutterless look that is popular in home decorating trends today.