

Minimizing airbrush goofs

YOU MAY KNOW by now that there are a multitude of opportunities to goof with an airbrush. At the top of the long list most common to man (better make that persons) is the "catch-your-foot-in-hose" complaint.

This is the most common reason for breaking an airbrush. The six-to-10-foot hose is usually looped on the floor or over your knee. In the throes of creative expression, it is easy to forget about the airbrush. So when you move, nudge or twist, bump or however it happens — and it is always unexpected and unwanted — your airbrush somehow gets knocked to the floor.

The first time it happened to me, it seemed like it fell in slow motion. Before it hit the floor, I wondered how I could afford to fix it when I spent all my money buying it. What was I going to do to finish my painting? How could I tell my wife I broke my airbrush?

FORTUNATELY IT WAS OK and I did the only thing there is to do to make sure that it didn't happen again. I bought an airbrush hanger which cost about 75 cents.

Actually a hanger is only a precautionary measure. I am sure many



artifacts  
 David  
 Messing

readers have managed to nudge their airbrush right out of the hanger.

Next to the list is the "too-much-paint-in-too-little-space" syndrome or the "centipede city" painter. With a single-action airbrush, it is important to stay the right distance away from the paper or board.

For example, if you are too close, too much paint will collect on the board and the air will blow little rivers of paint out of the excess, thus looking much like a centipede. This is an even greater problem with those owning a dual-action airbrush. Here is the cure for "centipede city." Place your second digit on the button rather than your finger tip. It takes a much greater effort to pull your finger back, which seems to give you more "play" with the button. The finger tip is too flexible and gives you too much pull on demand.

I GUARANTEE IT will feel awkward at first, but I also guarantee it will help. Third in the list of goofs would have to be the "staccato scribble stroke."

This mistake I often hear before I can see. In the class with everyone making long continuous sprays, sometimes I will hear a rapid pss . . . pss . . . pss . . . this is often accompanied by a nervous scribble-patterned stroke. Remember, depress the button and spray in slow and controlled patterns.

Of course, there are too many goofs to list, but some noteworthy mistakes are "chief spray in the face," "splatter on the pants," "dirty tip blues" and "clean-it-later complainer."

I feel that ink is the best medium to use with an airbrush while you are learning. It is thin and gives you no trouble becoming atomized. It is rich in coverage, which is important so

you can see what pattern you are spraying.

Ink cleans easily out of the airbrush and usually a quick rinse with water will do. Most inks are transparent, but with airbrush transparency is of little use. Because of the nature of the spray, even opaque colors take on a form of transparency.

Higgins came out with a line of opaque pigmented inks which are my favorite for teaching.

AS YOU INCREASE your ability, it is nice to turn to gouache and/or dyes. With gouache, you will encounter the "dirty tip blues" if you fail to thoroughly clean your airbrush after each session.

But I am a realistic person and I know that if your painting turns out great, you snap it off the easel and go show your critics, leaving a loaded airbrush behind.

Likewise if your painting goes into the circular file or in the bottom of the bird cage, you walk away head drooped, again leaving a loaded airbrush behind. Days later you return to find your color cap is welded into the airbrush, and Hulk Hogan couldn't pull the button back.

Good thing airbrushes are hardy and with a sufficient cleaning can be restored to usefulness.

briefly speaking

SENIOR ART EXHIBIT

The Senior Art Exhibit will be on display in the Madonna College art gallery beginning Saturday, Nov. 22 through Sunday, Dec. 7. Among the mixed media on display are drawings, paintings, prints, sculpture and commercial art.

An opening/reception will be held 7:30-9:30 p.m. Friday, Nov. 21. Gallery hours are from 9 a.m. to 8 p.m. Monday through Friday; 1-4 p.m. Saturday and Sunday. There is no admission charge. For more information, call 591-5102. Madonna is at the corner of I-96 and Levan, Livonia.

PIANO TEACHERS FORUM

Joan Conway, professor of piano and Hope College duo-pianist, will be guest speaker at the meeting at 9:30 a.m. Wednesday, Nov. 5 of the Livonia Area Piano Teachers Forum to be held at Hammill Music Store, 15600 Middlebelt, Livonia. Guests are welcome. For 464-7382 for information.

COUNTRYFOLK/FINE ARTS FESTIVAL

More than 100 of Michigan's craftsmen and fine artists will participate in the Michigan Cultural Association arts and crafts show sponsored by the Michigan Cultural Association.

clation at the Ladbroke Detroit Race Course clubhouse in Livonia from 10 a.m. to 5 p.m. Saturday, Nov. 15, and Sunday, Nov. 16. Admission is \$2 and a light lunch will be available.

With the emphasis on country items, items for sale will include braided and hooked rugs, candles, wreaths, potpourri, firebricks, country textiles, stenciling, pantry and Shaker boxes, weather vanes, decoys, carved toys. More modern items for gift-giving and collecting will include stained glass, watercolors, oils, gold and silver gemstone jewelry, porcelain and pottery.

Ample free parking is available. The DRC is at I-96 and Middlebelt in Livonia on the Schoolcraft service drive.

VEGETABLE CARVING WORKSHOPS

A workshop on the ancient craft of vegetable carving will be held from 10:30 a.m. to 12:30 p.m. Saturday, Nov. 15, at the Detroit Historical Museum. Instruction by Esther Kuxhaus will show how to turn ordinary vegetables into intricate designs for your holiday table. Registration fee is \$5 with a \$1 materials fee. For ages 16 and up. For more information, or to register, call 833-1805.

Youth symphony  
 invites public to  
 open rehearsal

Metropolitan Youth Symphony alumni and the general public are invited to sit in on an open rehearsal Saturday, Nov. 1, as part of the group's fifth anniversary celebration.

Beginning at 9:30 a.m. and continuing until 12:30 p.m., the activity will involve three orchestras in their home base of Southfield-Lathrup High School, 12 Mile between Evergreen and Southfield roads. Refreshments will be served to visitors.

Dance opportunity

There are still a few preschool positions available in dance classes conducted by the Polish Centennial Dancers of Plymouth, sponsored by the National Alliance Lodge No. 2140.

Children between the ages of 3 1/2 and 4 1/2 may join the group. Gail Ciolek Wilentz will teach basic steps with a group concept for this age group. For more information, call John Pelz at 261-9016 or Joan Ygeal at 464-1283.

It's 6 p.m....  
 Do you know where  
 Mom (or Dad) is?



At The Heatherwood, rest assured that he or she will be enjoying an elegant dinner with friends in our Rosewood Room.

Introducing The Heatherwood... the innovative new rental community in Southfield that treats your parents the way they want to be treated. They'll love it, and you'll love the fact that The Heatherwood caters to the unique lifestyle of active seniors with 1 and 2 bedroom suites in a festive environment, featuring:

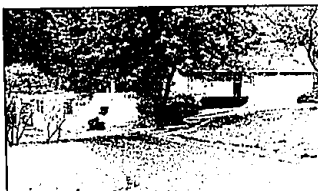
- Daily dining in our elegant Rosewood Room
- A complete personal fitness program • 24-hour monitored entry • Scheduled transportation services • Housekeeping services • Linen service • A full social program • Barbershop/beauty salon • 24-hour emergency alert system

Rents start at just  
 \$1,061 per month!

Call today for more information  
 350-1777

22800 Civic Center Drive  
 Southfield, Michigan 48034

the  
 HEATHERWOOD  
 Prestigious Rental Suites for Active Seniors



LAKEFRONT CONTEMPORARY  
 This home was featured in BETTER HOMES AND GARDENS magazine and is located on HOLLY LAKE in Farmington Hills. This award-winner offers 4,000 sq. ft. of luxury and features a ONE OF A KIND master bedroom suite. Must be seen to be appreciated. Call Today! \$198,000 (PR296) 357-6700



GOURMET'S DELIGHT  
 Are you looking for a warm, inviting family home? Designed for family conversation and eating enjoyment! This outstanding 3 bedroom colonial is unique and mint. Desirable Evergreen Trails Sub. near good schools. \$179,900 (B-278) 340-6777



RUSTIC COUNTRY RANCH  
 4 Bedroom with basement featuring family room and fireplace with Andersen doorsall to tri-level w/finished deck, veranda off garage and many more amenities. Decorated to perfection, just place your furniture. \$145,000 (B-284) 347-2000

**Glen Oaks**  
 LUXURY APARTMENTS

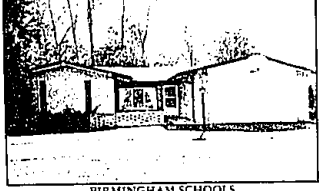
Glen Oaks. The only one of its kind. Quite simply in expressing elegance, quality and prestige Glen Oaks has no equal.

Glen Oaks. An exclusive private community nestled in 10 naturally landscaped acres, complemented by a lake, stream and ponds. Built to accommodate the most discerning eye and discriminating taste. It stands unrivaled. Nothing was spared or omitted. Like the helicopter landing pad and all grounds security - virtually impenetrable to the uninitiated. Yet, within minutes from your doorstep, is Twelve Oaks Mall - with more than 150 stores, restaurants, and theaters - for your convenience and enjoyment.

If you aspire to live in an environment offering the very best - make your address Glen Oaks, and seek refuge in this oasis of luxury.

43100 Twelve Oaks Crescent  
 (Across from Twelve Oaks Mall)  
 Hours: Sat. & Sun. 11-5 p.m.  
 or by appointment  
 851-2303

EXCLUSIVELY  
 LEADED BY  
  
**Chamberlain**  
 REALTORS



BIRMINGHAM SCHOOLS  
 PRIME 15 MILE AND EVERGREEN LOCATION - Custom built ranch with ALL THE EXTRAS - walking distance to Groves High School. Large family room with fireplace, central air, formal dining room, beautiful rec room, attached garage and circle drive. THIS HOME HAS BEEN REDUCED FOR IMMEDIATE SALE. LAND CONTRACT TERMS \$103,900 (CH199) 357-6700



FARMINGTON HILLS  
 Lovely brick home on 3.79 acres with great seeping potential. Includes 3 bedroom, 1 1/2 baths, dining room, large family room, natural fireplace, central air and a 2 car garage. \$225,000 (M-256) 831-2303



SOUTHFIELD - NATURAL SETTING  
 Many extras throughout this brick ranch on a lovely large lot. 4 bedrooms, 2 full baths, large kitchen, finished walk-out basement with fireplace and attached 2 car garage with opener. \$89,000 (S-238) 851-2303

SOUTHFIELD/LATHRUP  
 557-6700

ROYAL OAK  
 547-2000

Chamberlain  
 REALTORS

"Serving the area's finest communities since 1918"

WEST BLOOMFIELD  
 851-2303

BLOOMFIELD  
 644-6788

ROCHESTER  
 651-3330

TROY  
 643-8500



BIRMINGHAM  
 540-6777

