

## briefly speaking

### ● CABARET CONCERT

The Dearborn Orchestra Society will present the Dearborn Symphony Orchestra in a special cabaret concert at 8:30 p.m. Friday, Jan. 16, in the Dome Room of the Dearborn Civic Center, Michigan at Greenfield roads.

Guest conductor Leo Najar has chosen a patriotic theme, "Made in America," which will feature the New Reformation Dixieland Jazz Band and Dave Opperman.

Tickets are \$7 for adults and \$3 for students. Tickets will be available at the door. For additional information, call 561-5782.

### ● MOTHERWELL EXHIBIT

Robert Motherwell: Recent Prints opens with a preview reception at the Alice Simsar Gallery from 6-8 p.m. Saturday, Jan. 10. The gallery is located at 301 N. Main, Ann Arbor. Born in Aberdeen, Wash., in 1915, Aberdeen is the youngest of the heroic generation of abstract expressionist artists who revolutionized painting in the 1940s and caused a shift in the focus of world art from Paris to New York.

Also on exhibit will be recent paintings of Don Wynn. The artist will be present at the reception. Both exhibits will continue through Feb. 11. Gallery hours are 10 a.m. to 5:30 p.m. Tuesday through Saturday.

### ● BASKETRY SEMINAR

Char TerBeest will conduct a workshop on willow basketry at Tint and Splint Basketry, 30100 Ford Road in Sheridan Square. TerBeest is author of Wisconsin Willow-Adventures of a Basketmaker. A basket-

maker for 10 years, she exhibits nationally in numerous shows, fairs, galleries and exhibitions. Her work has been pictured in such national publications as Better Homes and Gardens, Country Home and Fibers.

For more information on enrolling, call 522-7760.

### ● ESCHER PRINTS

"Life and Artwork of M. C. Escher" including materials from personal friends of the famous printmaker will be on display in the University of Michigan-Dearborn library from Friday, Jan. 30 through Monday, Feb. 23. An opening lecture by UM-D art lecturer Eliceta Stamelos is scheduled for 7:30 p.m. Friday, Jan. 30.

### ● CALL FOR ARTISTS

Michigan's professional performing artists, solos, duos and groups, professional visual artists, museums and galleries with exhibitions to travel, and filmmakers with films to rent or loan are all invited to submit an application for a listing in the "Directory of Michigan Touring Arts Attractions."

The directory is a booking guide for groups and individuals presenting performing arts entertainment and educational programs, exhibitions and films in their communities. There is no charge to artists for this listing.

The application deadline is April 1. Applications are available by writing: The Touring Arts Agency, Midland Center for the Arts, 1801 W. St. Andrews, Midland 48640-2695.

### ● HANDS-ON MUSEUM RE-OPENS

Ann Arbor's popular Hands-On Museum, containing dozens of participatory and scientific exhibits, has reopened to the public, following a period of major renovations.

The museum, located in the historic fire house in central Ann Arbor, contains two floors of museum space, now completely renovated and with several new exhibits. By February, the third and fourth floors will be opened for the first time, adding 4,500 square feet of space for new exhibit galleries, a darkened gallery for light and optics exhibit, a computer room, and a math, puzzle and logic game room.

The museum also will have a new entrance, lobby and gift shop area. For more information on visiting hours, call 995-5439. It is at 219 E. Huron.

### ● ADDING CLASSES

Center for Creative Studies-Institute of Music and Dance will add to new music therapy offerings to its program at its Center School in Detroit. Beginning in January, the insti-

tute will offer Chime Choir as well as Orff Schulwerk for children with special needs.

These new programs will be added to the current private music therapy services provided by the school's registered, board certified therapists.

Chime Choir will utilize modified English handbells to provide small group experiences for students between the ages of 7-15. Music therapy Orff Schulwerk classes are designed for children 3-10 to attend with a parent. The course is based on activities enjoyed by every child — singing, clapping, chanting rhymes and keeping a beat on anything near at hand.

For more information, call 831-2370.

### ● SATURDAYS AT FOUR

Marygrove College's 10th season of the highly acclaimed chamber music series "Saturdays at Four," featuring members of the Detroit Symphony Orchestra and other well-known local professional area musicians and vocalists, will be offered in the Madame Cadillac Building at 4

p.m. Saturdays, beginning Jan. 10.

The concert dates for the 1987 season are: Jan. 10, Lafayette String Quartet; Feb. 7, Ventura String Quartet; March 7, Two-Way Piano Recital; April 4, Renaissance Woodwind Quintet; and May 2, Marygrove College Chamber Singers and the Marygrove Trio.

Tickets are \$6 with a \$3 admission for students and senior citizens. Season ticket is \$25. The ticket price includes hors d'oeuvres reception immediately following each performance, allowing guests to mingle and meet the musical artist.

For more information, call Sue Vanderbeck, 862-8000, Ext. 316.

### ● BBAA CLASSES

The 10-week winter term at the Birmingham Bloomfield Art Association begins Jan. 12, continuing through March 21. Open registration is currently under way.

More than 100 classes and workshops in a wide variety of disciplines are available. Of special interest to youth and teens are the 20 classes geared to pre-schoolers through high school students, exploring drawing, painting and pottery, plus cartoons and comic strips. For further information and a free brochure, call 644-0866.

## Highlighting Slavic composers

Pianists Fedora Horowitz and Joseph Gurt will perform music by great Slavic composers at 3:30 p.m. Sunday, Jan. 18, at the Edsel & Eleanor Ford House of Grosse Pointe.

She is artistic director of the Lyric Chamber Ensemble which is sponsoring the program and he is profes-

sor of music at Eastern Michigan University.

Individual tickets are \$10 or \$8 for seniors and students. For concert information, call 357-1111. Presented in association with the Edsel & Eleanor Ford House and WQRS.



## Merrill Lynch Realty



**NEW CONSTRUCTION** in this 3 bedroom Cape Cod in Farmington Hills. Ultimate in living with neutral carpeting, vertical blinds, large deck and special lighting throughout. \$199,000 626-9100



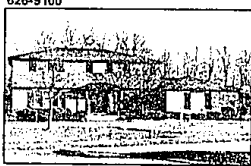
**OPEN SUN, 1-4, 5345 Tequesta, West Bloomfield.** This maintenance free 4 bedroom, 2 1/2 bath Colonial featuring wood insulated windows, library, spacious family room, formal living and dining rooms, private deck. \$169,900 626-9100



**2.5 ACRES OF WOODS** surround this 4 bedroom home. Jacuzzi and waterfall by pool, custom design throughout, cathedral ceilings and beautiful balcony overlooking entry and living room. \$169,900 851-8100



**QUALITY AND CUSTOM DESIGN.** 4 bedroom Colonial, with library, sun porch, first floor laundry, custom woodwork. 2 full baths, 2 powder rooms, and a spacious deck complete this home's comfortable arrangement. \$179,900 626-9100



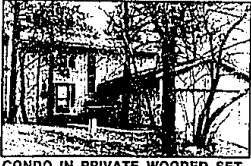
**BEAUTIFULLY TREED** and very private 1/4 acre lot with large circular drive in West Bloomfield. 4 bedroom Colonial presents numerous quality features, patio, central air, natural fireplace and great rec room. \$164,900 851-8100



**BEAUTIFUL AND IMMACULATE CENTER ENTRANCE COLONIAL** boasts 4 sizable bedrooms, 2 way fireplace between family room and kitchen, finished basement with wet bar and alarm and sprinkling systems. Lovely landscaping. \$162,000 851-8100



**SHARP RANCH** with finished walkout large inground pool with patio and deck. Home boasts 3 bedrooms, 1 1/2 baths, sprinkler system, all window treatments and formal dining room. \$145,900 626-9100



**CONDO IN PRIVATE WOODED SETTING.** Decorated in neutral tones; large rooms with view of serenity; wood burning stove in living room; and master bedroom with expansive private bath. New large womanized deck. \$139,900 851-8100



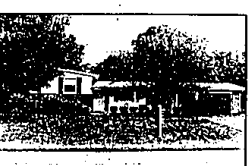
**GORGEOUS AND SPACIOUS** ranch features 3 sizable bedrooms, neutral decor; open family room; lovely bay window in living room and 1st floor laundry. Located on peaceful cul-de-sac. \$139,500 626-9100



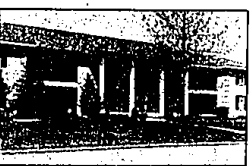
**EXCEPTIONALLY EXCITING AND IMPECCABLE** ranch of Farmington Hills. Provides recent decorating; hardwood floors; rec room; breakfast nook; and family room. All in a serene setting. \$134,900 626-9100



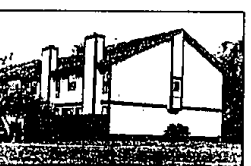
**2 BEDROOM RANCH** includes expansive great room, indoor pool, 2 car attached garage with plentiful storage and 1st floor laundry. Nice location in Huntington Woods. \$120,000 626-9100



**LOCATED ON A BEAUTIFUL TREED** lined street this 3 bedroom tri-level boasts newer kitchen, neutral colors, vertical blinds, natural fireplace and so much more! \$99,900 626-9100



**GREAT ALTERNATIVE** to owning a home. Condo with gatehouse clubhouse, tennis courts and pool 2 bedrooms and attached garage in popular Hunters Ridge complex. \$89,900 851-8100



**ENJOY CAREFREE** living in this spectacular townhouse style condo. Many features include Italian tile floor in kitchen, family room and foyer, finished birchwood cabinets in kitchen, natural fireplace and oak floors in 3rd bedroom. \$79,900 626-9100



**SHARP RANCH** on wooded lot decorated in neutrals. Also featuring hardwood floors, oak wood floor in kitchen, full master bath, privileges on private Fox Lake - and nicely landscaped yard. \$79,000 626-9100

BIRMINGHAM/BLOOMFIELD

FARMINGTON HILLS

TROY

ROCHESTER

WEST BLOOMFIELD

1520 N. Woodward  
at Long Lake Rd.  
646-6000 647-5100

31000 Northwestern  
at 13 Mile Rd.  
626-9100

5017 Rochester Rd.  
at Long Lake Rd.  
689-8900

1000 W. University  
(at Meadowbrook Plaza)  
651-8850

4316 Orchard Lane Rd.  
at Long Lake Rd.  
851-8100

## PHASE III (Final Phase) NOW OPEN

Decorated, furnished model for sale, immediate occupancy.

## The MANOR HOMES at Aldingbrooke

For purchase



2 and 3 bedroom detached condominium homes of extraordinary quality and character.

Aldingbrooke is a private estate-like community situated on over 130 spectacular acres of pond, trees and rolling hills. Entry is off Drake Road, between Maple and Walnut Lake Roads, through the 24 hour monitored gatehouse.

The Manor Homes at Aldingbrooke are open for your inspection daily from 12 to 6 p.m.

Reservations now being accepted  
661-1750

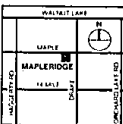
## 1987 MODEL PREVIEW

All New

Two Bedroom, Two Bath Plans  
From \$94,900 in West Bloomfield.

Sound enticing? Visit Mapleridge and let us show you luxurious condominium living with studio ceilings, Eurostyle kitchens with

G.E. appliances, over-sized bedroom suites, attached garages and more!



Final Opportunity  
Phase I Models from \$89,900

Located on Maple Ridge 1/4 mile West of Drake. Furnished models open daily and weekends noon to 6 or by appointment. Closed Thursday. Telephone: 661-4800

MAPLERIDGE  
CONDOMINIUM

An Old F. Smith & Son Community Development