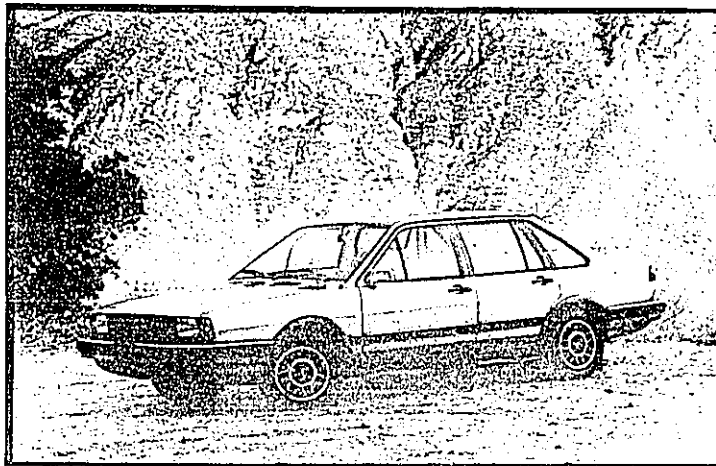


The Allante, GM's new passenger flagship which made its debut recently, is actually three profiles in one — hardtop, soft top and no top. The lightweight aluminum hardtop can be removed without tools and the soft top, with three distortion-free glass windows, stows away easily behind the seats.

*Auto show-goers will see the premiere of several 1987 and 1988 vehicles and concept cars.*

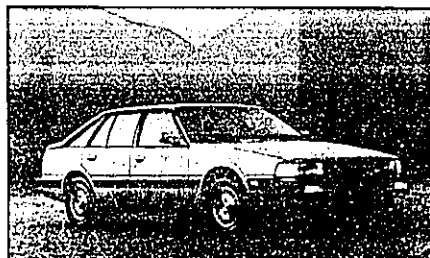
**THE  
TALK OF  
THE  
TOWN!**



The Volkswagen Quantum GL will be one of the models on display at the auto show.



The Honda Civic 4WD wagon for 1987 boasts a Real Time system that "thinks for itself." The system incorporates a viscous coupling in the power train that automatically senses when the front wheels begin to lose traction on a slippery surface and automatically engages the rear wheels, providing the maximum traction of 4-wheel drive. When the wagon is back on a dry surface, the system shifts back to 2-wheel drive. There are no buttons or levers for the driver to operate.



The versatile five-door 1987 Mazda Touring Sedan offers room for five adults and a generous cargo space. A split-folding rear seat and easy accessibility through the large rear hatch make carrying bulky items a breeze.

