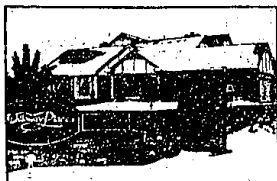


"FEATURE HOMES"



ANNOUNCING NEW LUXURY CONDOMINIUMS

These Tudor style, private entry homes with Bloomfield Hills malling are for the discriminating buyer. Some of the amenities include vaulted ceilings, wood burning fireplaces, gourmet kitchen, 1st floor laundry room, central air, security system and Bloomfield Hills schools. Limited number of ranch units and units offering a 1st floor master suite! Prices range from \$213,500-\$245,000. WYV-90477



SUPERB UPPER STRAITS LAKEFRONT TUDOR!

Lakefront living at it's best in this 5 bedroom, 7 1/2 bath beauty. Over 3 wooded acres with 150 feet of lakefront on all sports Upper Straits Lake. Floor to ceiling windows and large doorways give this quality home the setting it deserves. Separate 30x40 outbuilding for cars and boats! Outstanding family home - great for entertaining. Priced at \$975,000. POC-88270



WEST BEVERLY HILLS

Updated 3 bedroom Colonial includes 1 1/2 baths, family room with side pine plank floor, formal dining room, finished basement with office and living and dining rooms with hardwood floors. \$153,900. DEE-90491



NEW ON THE MARKET

Charm abounds! Warm and inviting new decor - shows like a model. Four bedrooms, living and dining rooms, new kitchen, 1st floor master suite and a full basement. \$154,900. KIN-90656



RALPH MANUEL

ASSOCIATES • REALTORS

851-6900 **647-7100** **656-8900**
32961 Middlebelt **1821 W. Maple** **445 S. Livernols**
Farmington Hills **Birmingham** **Rochester Hills**

Relocation 1-800 R-MANUEL

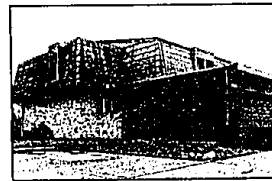


- MEMBER OF EMPLOYEE RELOCATION COUNCIL
- MEMBER OF TRANSLO RELOCATION SERVICE

IF YOU ARE MOVING ACROSS THE CITY OR ACROSS THE COUNTRY, OUR RELOCATION DEPARTMENT CAN MAKE YOUR MOVE SMOOTHER.



THINKING OF SELLING YOUR HOME? NOW IS THE RIGHT TIME TO CALL RALPH MANUEL ASSOCIATES FOR A FULL TIME EXPERIENCED SALESPERSON TO GIVE YOU A COMPREHENSIVE MARKET OPINION OF THE VALUE OF YOUR HOME!



MOVE RIGHT IN!

To this spacious 4 bedroom, 2 1/2 bath family home. Two fireplaces, bay window in dining room, double ovens in spacious kitchen, 6 panel doors and convenient second floor laundry room. \$144,900. SEY-90304



WILLIAMSBURG COLONIAL

Spacious 4 bedroom, 2 1/2 bath home offering many custom features. Library with beautiful french doors, 1st floor laundry, exquisite decorating and large deck! \$179,900. CHE-90305



BIRMINGHAM CONTEMPORARY

Outstanding 2 story great room with fireplace, almond formica kitchen with beautiful wood floor, 3 bedrooms, 1st floor master suite with bath and finished rec room. \$129,900. HAY-90325



OPEN SUNDAY 1-4



LAKE ACCESS!

On two lakes. Perfect starter home with 3 bedrooms, 1 bath, finished basement and a flower filled yard! A real gem! \$65,500. 4265 Bunker. S. of Pontiac Trail and W. of Green Lk. Rd.



ROCHESTER HILLS CONDO

Sharp, clean and ready to occupy! This "Kings Cove Condo" offers 3 bedrooms, 2 1/2 baths, basement, garage, central air and neutral decor! Convenient location!! \$91,800. KIS-88653



SHARP CONTEMPORARY

Newer Birmingham home with stylish Open floor plan with cathedral ceilings, 1st floor laundry, 2nd floor sitting area overlooking the living room, plenty of storage! \$105,000. HOD-90493



NESTLED IN SUBDIVISION!

Extraordinary value in this large family colonial with newer roof, wet plaster walls, hardwood floors, panelled den with built-ins and freshly decorated. Great West Bloomfield area! \$142,500. ABN-88076



PINE LAKE ESTATES

Traditional 4 bedroom, 2 1/2 bath Colonial in excellent family neighborhood. Beautiful family room with brick fireplace, privileges on Pine Lake and West Bloomfield schools. Offered at \$133,000. MAN-90094.



BIRMINGHAM GEM!

This 3 bedroom home is ready to move into! Super in-town location at a very affordable price. Much updating and very neutral decor to today's modern lifestyle! Offered at only \$84,750. CHN-89810



CONTEMPORARY RANCH

Warmth abounds this open floor plan with 3 large bedrooms, 2 1/2 baths, sauna, skylites and Florida room. Finished basement and 3 car garage plus 1.4 wooded acres. Seeing is believing! \$143,900. PEK-86738



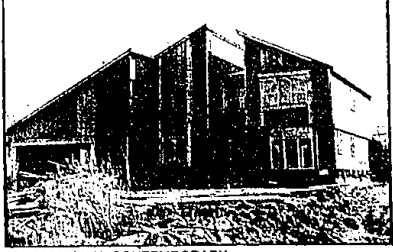
LOVELY LOT IN ROCHESTER

Customized quad-level with loads of upgrading makes this one of Rochester's finest homes. Great room with beveled glass mirrored walls and vaulted ceilings, library richly paneled with built-ins, spectacular 3 tiered decking and special "Pub" room. \$222,900. SUT-90637



LONG LAKE ESTATES

Spectacular contemporary designed by architect David Lubin. Impressive 2 story glass foyer, alarm, sprinklers, 2 fireplaces, finished basement with ideal quarters, skylite, whirlpool in master suite bath and formica island kitchen. \$433,000. BAE-89152



SENSATIONAL CONTEMPORARY

In West Bloomfield and ready to occupy in the early spring. Master suite features a huge walk-in closet, private bath with separate shower, tub and skylite. Gorgeous kitchen, 4 bedrooms, 2 1/2 baths and much more. Offered at \$225,000. POD-88359