

exhibitions

BIRMINGHAM BLOOMFIELD ART ASSOCIATION

Friday, Feb. 6 — 42nd juried exhibition by members of the Birmingham Society of Women painters opens with a 7-9 p.m. celebration. This will also be a birthday party for the Art Association which is marking its 30th this year. Also, the members will be autographing and selling a new calendar book with original drawings. Hours are 9:30 a.m. to 4:30 p.m. Monday-Saturday, 1516 S. Cranbrook, Birmingham.

RUBINER GALLERY

Friday, Feb. 6 — Group exhibition by gallery artists and new artists continues through Saturday, March 14. Hours are 10 a.m. to 5:30 p.m. Tuesday-Friday, until 5 p.m. Saturday, 7001 Orchard Lake, West Bloomfield.

GALLERY BIRMINGHAM

Friday, Feb. 6 — "Blow Your Mind," exhibit of rare Peter Max (remember him, the rage of the 60s?) prints and posters. He influenced a whole generation of Americans with his fanciful designs and psychedelic colors. Continues through Feb. 20. Hours are 10 a.m. to 5 p.m. Tuesday-Saturday, until 8 p.m. Thursday, 223 S. Woodward, Birmingham.

CADE GALLERY

SATURDAY, FEB. 7 — Paintings by Sheldon Iden. A visit to India in 1985 inspired the works in this show. Iden is a highly regarded native Detroit. Hours are 10:30 a.m. to 7 p.m. Tuesday-Saturday, 214 W. Sixth St., Royal Oak.

KINGSWOOD LOWER GALLERY

Saturday, Feb. 7 — Works in photography, clay, wood and neon by Ray Wetzel will be on display through February. He has a MFA from the University of Michigan. Opening reception 7-9 p.m. Saturday. Hours are 9 a.m. to 4 p.m. weekdays, 885 Cranbrook, Bloomfield Hills.

HABATAT GALLERIES

Saturday, Feb. 7 — An exhibit of works by John Luebow, Karl Schantz and Paul Manners and "Radiant Objects," an exhibit of lighting concepts by 10 artists and "Lighting Alternatives," in the lower level Venture Gallery. Reception to meet the artists 8 p.m. Saturday, 28235 Southfield, Lathrup Village.

XOCHIPILLI GALLERY

"Notations," a show of works by Douglas Warner continues through Feb. 23. His acrylics on canvas are clearly influenced by his interest in Near-Eastern and Oriental writing

and artifacts. Reception 2-5 p.m. Saturday. Hours are 11 a.m. to 5 p.m. Tuesday-Saturday, 568 N. Woodward, Birmingham.

THE GALLERY AT MAINSTREET PLACE

"Handmade in Michigan" honors the state's sesquicentennial with an exhibit of "Glory's Cranbrook," a series of works by Gloria Lehmansurfer of the Cranbrook complex along with paintings, sculpture, pottery, jewelry and cards by Michigan artists. Hours are 10 a.m. to 5 p.m. Tuesday-Sunday, 903 N. Main, Royal Oak.

CENTER FOR CREATIVE STUDIES

Wednesday, Feb. 11 — "Expressions," the second annual exhibit by Black Artists Researching Trends, celebrates Black History Month and features mixed media works interpreting the contributions made by Afro-Americans to the arts. Continues through Feb. 22. Reception to meet the artists 5-7 p.m. Wednesday, Underground, 245 Gallery, lower level Yamasaki Building, 245 E. Kirby, Detroit. Hours are 9 a.m. to 4 p.m. Monday-Friday.

LILL STREET STUDIOS

"What If . . ." is a show of intaglio, lithography and mixed media prints by 14 Cranbrook Academy of Art students. The other part is "P&P — Plates and Platters" by noted Illinois ceramic artists. Opening reception noon to 4 p.m. Saturday. Regular hours are 10 a.m. to 5:30 p.m. Tuesday-Friday, until 4 p.m. Saturday and 10 a.m. to 4 p.m. Sunday, Feb. 8, 1021 W. Lill Street, Chicago.

YAW GALLERY

"Objects of Ceremony: 19th and 20th century" is an unusual collection of objects with an energy and mystique about them that transcends their purpose. They range from a dance costume from the Ibo tribe of Nigeria and a woven mat from Zaïre to a woven collage of the American flag. Continues through March 15. Hours are 10 a.m. to 5 p.m. Tuesday-Saturday, 550 N. Woodward, Birmingham.

ROBERT L. KIDD GALLERY

Group exhibition of new work by sculptors David Greenwood, Jerome Kamrowski and Louise Kruger, painters Mary Bertl, Otto Duckert, Larry Horowitz, Cindy Kane, George Kozmon, Ellen Moucoullis and Ellen Wilt. Hours are 10:30 a.m. to 5:30 p.m. Tuesday-Saturday, 107 Townsend, Birmingham.

PEWABO POTTERY

"Extensions," a show of works by

six artists who extend function continues at the Pottery through February. Hours are 10 a.m. to 5 p.m. Tuesday-Saturday, 10125 E. Jefferson, Detroit.

IS INC. GALLERY

"Protocol," an exhibit by Bruce Thayer continues through March 3. Music by David McMurray and Tani Tabbal. Hours are 9 p.m. to 2 a.m. Wednesday, Friday and Saturday and 7 p.m. to midnight Sundays, Isis Entertainment Complex, 13 S. Saginaw, Pontiac.

DETROIT INSTITUTE OF ARTS

"Ancient Eskimo Ivories of the Bering Strait," continues through March 22. The 167 sculptures on display originated between the third century B.C. and 1100 A.D. They are human figures, bird and animal images, harpoon points, foreshafts and counterweights, implements, ornaments and utensils. Open without charge during regular hours, 9:30 a.m. to 5:30 p.m. Tuesday-Sunday, 5200 Woodward, Detroit.

FRED GROSSMAN GALLERY

Works by Edna Hibel, Yaacov Agam and Ebgi are on display through February. Hours are 10 a.m. to 5 p.m. Monday-Saturday, 29528 Northwestern, Sunset Strip between 12 Mile and Inkster, Southfield.

BIRMINGHAM BLOOMFIELD ART ASSOCIATION

Works in the sales gallery during February include white porcelain vases by Phyllis Auble, glass perfume bottles in jewel tones by Bruce Boatman, stained glass jewel boxes by Warren Wood, gold and silver jewelry by Charlotte Quinn and Ted Sierewski and beaded necklaces by Patricia Sencoff. Hours are 9:30 a.m. to 4:30 p.m. Monday-Saturday, 1516 S. Cranbrook, Birmingham.

PRINT GALLERY

Large-size posters are on display through February. Works by Jasper Johns, Alex Katz, Frank Stella, Jean Dubuffet and Robert Longo are on display. Hours are 10 a.m. to 6 p.m. Monday-Saturday, until 9 p.m.

Thursday, 28203 Northwestern in Franklin Plaza, Southfield.

PIERCE STREET GALLERY

Photographs by Tomasz Tomaszewski from the book, "Remnants: The Last Jews of Poland" will be on display through March 7. Tomaszewski and his wife, Małgorzata Niezabitowska, who wrote the book, are both Polish Catholics, who set out to document the survivors of a thriving Jewish population that once numbered more than three million. Today there about 5,000 elderly people left. Regular hours are 11 a.m. to 5 p.m. Wednesday-Saturday, 217 Pierce, Birmingham.

CRANBROOK ACADEMY OF ART MUSEUM

"The Ties that Bind: Folk Art in Contemporary American Culture," continues through Feb. 22. Includes works by 32 artists from across the country. Hours are 1-5 p.m. Tuesday-Sunday, 850 Lone Pine, Bloomfield Hills.

HAWARA GALLERY

Recent drawings and paintings by

Dennis Guastella are on display through February. Hours are 1-5 p.m. Tuesday-Friday and 11 a.m. to 5 p.m. Saturday, 1160 Welch Road, Walled Lake.

PAINT CREEK CENTER FOR THE ARTS

Paintings by Carlo Vitale are on display through Feb. 13. Hours are 10 a.m. to 5 p.m. Tuesday-Saturday, 407 Pine, Rochester.

SARKIS GALLERIES

Photography faculty exhibit continues through Feb. 23. Hours are 9 a.m. to 4 p.m. Monday-Friday, Center for Creative Studies, Yamasaki Building, 245 E. Kirby, Detroit.

DETROIT GALLERY OF CONTEMPORARY CRAFTS

"Celebrating Craft," a special exhibit of clay, wood, glass, baskets and tapestries, continues through Feb. 21. Hours are 11 a.m. to 5 p.m. Monday-Saturday, 301 Fisher Building, Detroit.



Merrill Lynch Realty



SUPER SHARP CONTEMPORARY Bi-level sets on heavily treed lot for total privacy. 4 bedroom, 3 bath home presents large sun deck, formal dining room, living room, 2 fireplaces and lovely pool. \$189,900 628-9100



SPACIOUS 4 BEDROOM, 3 1/2 bath Colonial for the family that enjoys entertaining. Sun room for year round pleasure, updated kitchen with new cupboards, and full rec room with wet bar and complete kitchen. Come explore this terrific home! \$139,500 628-9100



EXCITING 4 bedroom Contemporary ranch nestled in the woods. Very private treed yard, quality built with cathedral ceilings in foyer, driftstone fireplace and pleasant screened porch. Executives delight. \$179,500 628-9100



FARMINGTON HILLS LOCATION! Situated on a beautiful tree lined street, this 3 bedroom tri-level boasts new kitchen, neutral colors, vertical blinds, natural fireplace and so much more! \$99,900 628-9100



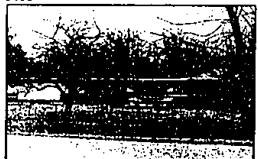
A GREAT START in this family sized Colonial of Farmington Hills. Lovely home provides comfort in the professionally decorated rec room with fireplace, hardwood floors, 4 bedrooms, and newer pool and playhouse. \$77,900 628-9100



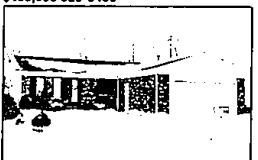
FARMINGTON HILLS ACREAGE. Reduced almost \$40,000. Owners motivated. Excellent location, easy access and 2 plus wooded acres makes this 4 bedroom, 3 1/2 bath, pool home a terrific buy. \$189,900 851-8100



OPEN SUN, 2-5 5920 Sunnycrest N. of Walnut Lake, W. of Inkster. **SHARP AND RECENTLY DECORATED** in neutrals, this 4 bedroom ranch offers an open floor plan of great room, living room and dining room. \$134,500 851-8100



CHARMING COUNTRY SETTING for this customized 3 bedroom ranch. Features include extensive decking, in-ground pool, two fireplaces, breakfast room, spacious family room, porch and huge workshop area. \$109,500 628-9100



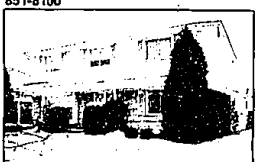
SHARP AND CLEAN ranch of Farmington Hills. Tastefully decorated 3 bedroom home includes family room with brick fireplace and cathedral ceiling, screened porch to wood deck, central air, storage shed and much more. \$82,500 628-9100



SHARP Ranch set on large treed lot with stream. Extremely well built with wet plaster and hardwood floors in living room, formal dining room and 3 bedrooms. Large patio, spacious rec room with bar and three car garage. \$84,900 628-9100



OPEN SUN, 2-5 3335 Buckingham N. of Lone Pine, E. of Orchard Lake. **BEAUTIFULLY DECORATED** immaculate West Bloomfield Colonial on cul-de-sac. 4 bedrooms, 2 1/2 baths, family room with fireplace, wet bar. \$189,900 851-8100



STEP INTO a California Look! Gray and white decor enhance the Contemporary flair of this 4 bedroom Colonial with ceiling beams, and a lovely white brick fireplace in family room which opens up to a circular patio in a secluded yard. \$129,900 628-9100



TOP QUALITY 4 bedroom ranch sparkles with a totally updated kitchen, new carpeting, refinished woodwork plus much electrical upgrading, new doorways, and fresh paint throughout. \$123,500 651-8100



SHARP COLONIAL home with contemporary flair. Boasting new carpeting in living room and family room, large kitchen with new flooring, 3 bedrooms, and a lovely deck. Circular Driveway \$107,900 851-8100



IMMACULATE SOUTHFIELD HOME. Move right into this comfortable and affordable home with 2 car garage, 3 bedrooms, full basement, shed and big corner lot. Hurry! \$55,900 628-9100



Looking for a special home?

Find yours in the Creative Living section—the area's finest Real Estate Guide.

THE
Observer & Eccentric
NEWSPAPERS

BIRMINGHAM/BLOOMFIELD 1522 N. Woodward at Longfellow 646-6000 647-5100	FARMINGTON HILLS FRANKLIN 31000 Northwestern at Longfellow Rd 628-9100	TROY 5017 Rochester Rd at Longfellow Rd 689-8900	ROCHESTER 1000 W. University at Woodward 651-8850	WEST BLOOMFIELD 4315 Orchard Lake Rd at Woodward 851-8100	NOVI/NORTHVILLE 17000 Grand River at Woodward 478-5000
---	--	---	--	--	---