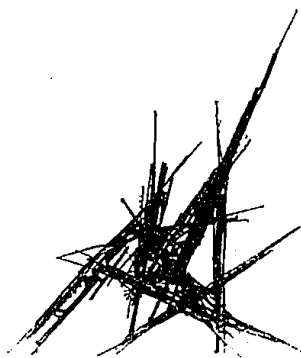


'Love of Art' bidding starts Oct. 8



Portrait is easily recognizable as the work of Sarkis Sarkesian, the artist and teacher who had a profound influence on many students at Detroit Society of Arts and Crafts.



Another internationally known sculptor with local ties (Cranbrook Academy of Art) is Bertoia whose pedestal sized sculpture will be up for bids.

Staff photos by Stephen Cantrell

Birmingham Bloomfield Art Association's fifth "Love of Art" fund-raiser will open Thursday, Oct. 8, with a silent, write-in auction and priced sale and continue through Saturday, Oct. 17.

During that time works donated for the benefit will be displayed and visitors may submit bids on the art or make a purchase. Final bids will be accepted by guest host, Bob Allison, at a free 5-8 p.m. reception Saturday, Oct. 17. There will also be a live auction, at 7 p.m. at the reception, conducted by Frank Boos, area auctioneer.

Ken Gross, executive director of the art association, said in addition to many of the works of art being donated by members of the faculty there is a nude (oil) by Moses Soyer, a portrait by Sarkis Sarkesian, a sculpture by Bertoia, a selection of retablos, sculptures by Richard LeVore and J.T. Abernathy and enamels by Robert Fisher.

Donations for the benefit are still being accepted, 9:30 a.m. to 4:30 p.m. Monday-Saturday, 1516 S. Cranbrook, Birmingham. For information on pickup of large items, call 644-0866.

Income from this event will be used to match a \$100,000 challenge grant from the Albert and Peggy deSalle Charitable Trust. The Art Association is planning a major ex-



Painting of a nude by Moses Soyer has the gentle quality of youth about it.

pansion of its facility that will more than double the size of the building to handle the steadily increasing demands for space, classes and art-related activities.

Holding auditions

• The Rochester Catholic Choral, dedicated to performing classical music for liturgical celebrations and concerts, invited men and women high school age and older to join them for the coming season.

The director is Daniel H. Olson. Rehearsals are held at 8 p.m. Wednesdays at the Older Persons Activity Center, 312 Woodward, just west of Main, Rochester. For information, call Rosemary Van Steeland, 652-9405.

• Severo-Geiger Ballet will hold auditions, by appointment, for male dancers with some experience, for "The Nutcracker." It will be performed on Sunday, Dec. 6, at Mercy Auditorium. Scholarships available. For appointment, call 661-2430 Monday-Saturday.

• The Madrigal Choral of Southfield is

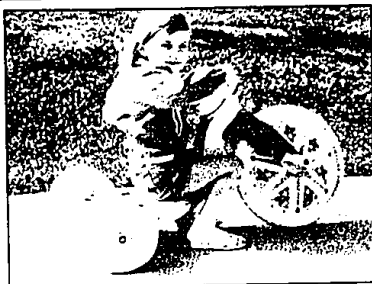
holding auditions for tenor voices for the new season. Be prepared with a sacred or classical solo and to sight read. The 50-voice Choral, representing Southeastern Michigan, rehearses Tuesday evenings at Southfield-Lathrup High School. They give at least four concerts a year. The Holiday Concert will be Saturday, Dec. 12, at St. Mary's Church in Greentown. For audition, call Carolyn Eynon, director, 648-1440.

• The Pontiac Tuesday Musicales Chorus and the Bell Ringers are interested in recruiting women for both groups. They perform in malls, schools, hospitals and for private parties.

For information on the chorus, call Margaret Warek, director, 332-4975 and for the Bell Ringers, call June Harting, director, 658-9285.

TAKE A RIDE

TO MAPLEWOODS II
THE FINAL PHASE—
WE'VE SAVED THE BEST FOR LAST



- ◆ Phase III includes exciting new models and a new selection of gorgeous wooded lots
- ◆ Gourmet kitchens, luxurious bathrooms & soaring ceilings
- ◆ Prices starting at \$244,000
- ◆ West Bloomfield schools
- ◆ The "premier" northwest suburban community

PHONE 851-9898 • Model Hours: 12-5 p.m. Closed Thursday



A Selective Homes—Notan Cohen Development

MAPLEWOODS II

Located off of Maple Road just West of Orchard Lake Road • West Bloomfield



ONLY SEVEN LEFT—THIRTY DAY OCCUPANCY

FABULOUS

All treed, ravine or pond views.
2 or 3 bedroom detached condominiums featuring 2,000 to 2,800 square feet of sumptuous living space, some with walk-out levels.

- Opulent master bedroom suites with roman step tubs, double vanities, dressing areas, incredible closet space
- Lushly large living rooms, fireplaces, wet bars
- State of the art kitchens, oversized breakfast rooms
- A wealth of architectural details, lush gardens
- Magnificent rolling terrain, all enclosed and entered through a 24-hour monitored gatehouse

Enjoy the best!

Call 661-1750 for more information.

Open daily 12:00 to 6:00
Entry is off Drake Road between Maple and Walnut Lake Roads



The
MANOR HOMES
At
Kingbrooke

THE BEST IN THE HILLS OF WEST BLOOMFIELD

a O&E Classifieds work! & O&E Classifieds work!

IN THE CITY...



IT'S HARD TO GET A
BREATH OF FRESH AIR

AT RAMBLEWOOD MANOR HOMES
IN FARMINGTON HILLS...



IT'S PART OF THE ATMOSPHERE!

THE RAMBLEWOOD MANOR CONDOMINIUMS are set amidst 100 acres of untouched beauty green rolling hills and peaceful streams. Privacy and security are provided with a 24-hour professional staffed gatehouse entry. You'll be living 5 minutes from the best of West Bloomfield and Farmington Hills shopping, restaurants and entertainment.

You'll be making a smart investment—RAMBLEWOOD MANOR CONDOMINIUMS are surrounded by private and exclusive homes. From \$115,900. (30-day occupancy on a few select units).

Ramblewood
Manor

Model Hours

10-6 PM

Sat 9-5 PM

Closed Thurs

661-8200

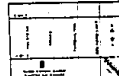
SWISSON READY INC.

Location on map

See about the map

and a map

from 10-11 PM



Custom residences as uncompromising as your standards.
One-half acre to full-acre estate sites tucked among the orchards high above the Franklin River, in Bloomfield.



Individually Designed Residences in the neighborhood of one-half million dollars.

Franklin Road between Fourteen Mile and Maple Roads
Sales center open daily from noon to 5:00 p.m.
or for a personal presentation call Ms. Shea at 737-9330.

HOLTZMAN & SILVERMAN/THE FISHER GROUP
Broker Participation Invited