

**Reatta — where it's at**

Reatta, Buick's new luxury two-passenger car, will be introduced at the Detroit Auto Show. Reatta features a combination of sporty and aerodynamic styling, nimble handling, a powerful new 3,800 V-6 engine, front wheel drive and independent four-wheel Gran Touring suspension with EPA fuel-economy ratings of 19 miles per gallon city, 29 mpg highway. The Reatta is offered as a coupe, but a convertible is planned for the future.

**Venture concept car debuts**

Chevrolet has selected the Detroit Auto Show to unveil Venture, a drivable preview of the four-passenger sport sedan of the next decade.

With a distinctive full-glass upper structure for panoramic visibility and the features and performance of a sport coupe in a sedan configuration, Venture was produced entirely within the General Motors organization.

Venture's highlights include:

- An aerodynamic shape with an all-glass upper structure.
- Front and rear lift-off transparent roof panels.

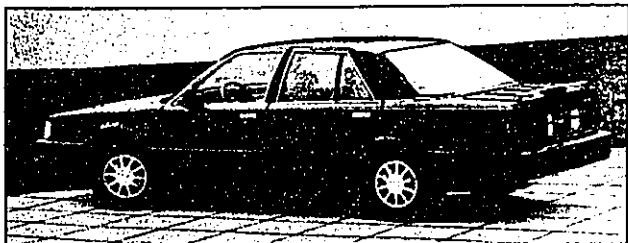
- An infra-red keyless-entry, door-opening system.

- A production-derived 3.1 liter 60-degree V6 engine with Multi-Port Fuel Injection that develops 160 horsepower.

- Four-wheel independent suspension with Delco 3-position computer command ride control.

- Bosch ABS II anti-lock brake system.

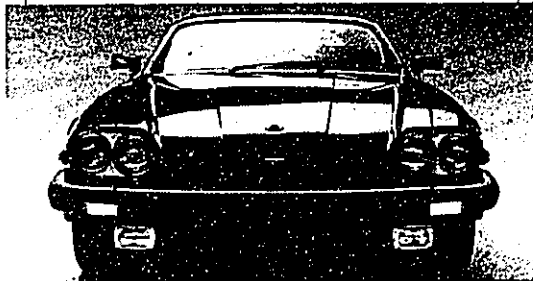
- 15-way power adjustable front seats with lower back massage feature.
- Automatic fold-away side and lower bolsters for easy entry and exit.



**Sleek Eagle**

The 1988 Eagle Premier — making its debut at the Detroit Auto Show — is offered in two models, each tailored for different buyers. Premier LX (shown) is tailored for the traditional intermediate luxury buyer. The Premier ES is designed for buyers seeking a sophisticated European sports sedan. Both come with a wide array of standard equipment.

**NOW APPEARING AT... THE AUTO SHOW 1988**



**THE V-12 JAGUARS**

12 CYLINDERS MOVE THE ELEGANT XJ-S WITH SILENCE AND SWIFTNESS THEY POWERED THE XJ-R TO THE WORLD SPORTS CAR CHAMPIONSHIP.

The product of over two decades of development, Jaguar's overhead cam, fuel injected V-12 is one of the world's most thoroughly proven high performance engines. Refined through racing and in millions of miles on the highway, it moves the sleek XJ-S in a manner befitting a true grand touring automobile. To sample legendary V-12 performance, visit our showroom. ENJOY TOMORROW, BUCKLE UP TODAY

**THE 1988 JAGUAR XJ-S**



The new breed Jaguar XJ6 blends the power of tomorrow's technology with the timeless splendor of supple leather, polished wood and unmistakable Jaguar style. Its form is more aerodynamic. Its new engine features 24 valves for enhanced power and high speed response. Its four-wheel, power-assisted disc brakes are complemented by an advanced anti-lock (ABS) braking system. The rear suspension adjusts automatically to varying loads. To coordinate the performance of mechanical, passenger comfort and driver information systems, the XJ6 is wired by seven powerful microprocessors.

The new breed XJ6 is a most advanced species. It is covered by an extensive three year/50,000 mile warranty and Jaguar's new Service-On-Site SM Roadside Assistance Plan. For details on this unique plan and Jaguar's limited warranty, applicable in the USA and Canada, visit our showroom.



**STOP BY OUR BOOTH LOCATED IN HALL D JUST AS YOU COME DOWN THE ESCALATOR**



*40 years... Creating the Competition!*

**1815 MAPLELAWN, TROY BETWEEN CROOKS AND COOLIDGE**

**643-6900 OPEN MONDAY AND THURSDAY UNTIL 9 P.M.**

