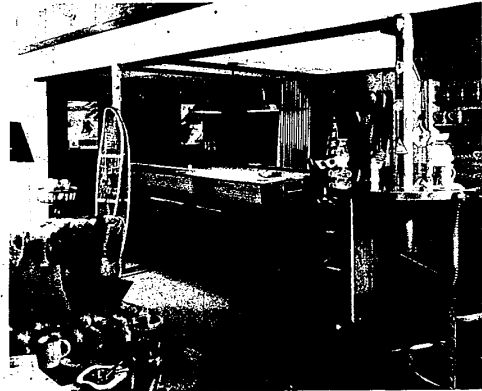




RED INDOOR-OUTDOOR carpet, weathered-looking wall paneling, and acoustical suspended ceiling make attractive room surfaces. Note pegged and lacquered poster for stacking skis at right and curtain treatment that adds deep false window and preserves source of light.



AFTER -- with pool table occupied by youngsters, acoustical ceiling drinks in noise. Fake fur throw over seating makes quarters seem even cozier. Under bar at right is extra storage space.

# Even Non-Skiers Enjoy Charm Of Ski Lodge

Any unfinished, living space in a home can acquire a delightfully rustic ski lodge atmosphere with a little ingenuity and modern building materials.

Even if you've never been closer to a pair of real skis than a couple of old barrel staves, there's something about a ski lodge that seems to suggest conviviality and well-earned relaxation.

Here's how one family of skiers actually transformed their basement into an alpine hideaway:

The room was laid out in three fluid but distinct areas: a lounge area, a bar and eating area, and a game area with a pool table.

An acoustical ceiling was suspended first from the bare rafters to absorb the noise of the family's teenagers at play so that adults in other parts of the house wouldn't be disturbed. The clean, white surface of the ceiling panels (they have a delicate lacey pattern of tiny holes) also serves to reflect the last ray of illumination from the room's cozy lighting arrangement.

A BONDED fiber indoor-outdoor carpet in cherry red contrasts brightly with snow (which may exist only in memory during much of the time that the family enjoys the room.) Besides, the carpet made by Armstrong is durable enough to withstand a succession of Saturday night parties.

The cinder block walls were covered with a textured wall paneling that resembles old, weather-beaten barn siding. For easy installation, it was glued to the wood studs.

The room serves several purposes and satisfies many family needs.

It is the repository of souvenirs from ski trips. Posters and ski trail charts decorate the walls.

The walls also double as storage space for ski gear. One poster has been lacquered and studded with pegs for stacking skis horizontally.

FURTHER STORAGE space is provided by cabinets under the bar. The refrigerator and the heating units (a furnace, oil tank, and hot water tank) have been tucked away in closets where they are instantly accessible.

The Lally columns, those cylindrical steel poles that are the headache of many a remodeler, were handled creatively. Painted red and adorned with ski resort decals, they add to the room decor.

A certain trick makes the small casement windows seem larger. By hanging the curtains from the window bottoms, they give the windows an illusion of depth and preserve them as a valuable source of daylight in a mostly below ground room.

Potted plants or other objects can be set in the concavity outside the sunken windows.

A red contemporary fireplace and red light fixture over the pool table carry the accent color to different sections of the room. The rustic flavor is enhanced by the exposed dark beams, really just rough-cut boards nailed together.

A perfect time to tackle a remodeling job of this scope is during the summer and fall months when the slopes are bare.

**SALE**

**6¢ \$1.00**

**VINYL ASBESTOS**

12 x 12 From **\$4.99** BOX

**SHAG CARPET TILE**

RUBBER BACK SELF STICK RUBBER BACK

12 x 12 8 COLORS **59¢**

**OTHER BARGAINS**

PEEL & STICK 27" SHOWER DOOR \$19.95

PLASTIC CARPET RUNNER Per Ft. 75

CERAMIC TILE Per Sq. Ft. 29

**Mister TILE** 9300 TELEGRAPH 255-2225

**REC ROOMS ADDITIONS**

**\$1,765**

COMPLETE

INCLUDES PLANS, PERMITS, PANELING, CEILING TILE, PLASTERING, ELECTRICAL, HEATING, COMPLETE JOB.

**ZA-LO Bldg. Co.** 24. our Service 27470 Joy Road GA 5-2333 KE 8-1122

**CERAMIC TILE Holiday Special**

**\$159.00**

Tub enclosure area Cement Installation

Call **421-8882**

**RUDDY & BLANCHARD TILE CO.**



BEFORE - this unfinished basement became quaint ski retreat in following pictures. Approached with creative verve, even ugly Lally column (steel pole) succumbed to clever remodelers, who painted it red and adorned it with decals from ski resorts.

**our pledge: LOWER PRICES**

**REDFORD CASHWAY**

LUMBER COMPANY

11970 Farmington Road 261-5110

**Pay Key Sidelocks**

**ROCK SALT DELIVERED \$3.00 PER 100 LB. BAG**

HOME OR BUSINESS 255-3095

**JOY LUMBER COMPANY**

15505 Beech Dale Road, KE 7-4480

**STORE HOURS:** Weekdays - 7:30 a.m. to 6:30 p.m. Saturday - 7:30 a.m. to 4:30 p.m.

**"A" GRADE -- 1 1/4" THICK EXTERIOR DOORS**

Colonial Style 2 Lite, 4 Panel 32x80 36x80

**19.95**

Reg. 35.00

**CROSS BUTCH EXTERIOR DOORS**

2 1/2" and 3" SIZES

9 Lites Reg. 41.35 **\$31.95** 12 Diamond Lites Reg. 54.35 **\$35.95**

Mahogany **\$4.50** 1 1/2" INTERIOR FLUSH DOORS 24" x 36" x 1 1/2" Birch **\$5.50**

**GREAT BUYS** YOUR HOME COMES FIRST

**Save \$\$ at - PINE LUMBER CASHWAY**

buy from a FULL LINE Lumber Dealer

**DO-IT-YOURSELF - IMPROVE YOUR HOME AT TREMENDOUS SAVINGS!**

**SHOWER KIT** FIBERGLAS & ALUMINUM **\$99.97**

"Guaranteed Against Rust-Proofing"

Easy to install - Ideal For That Extra Shower in The Basement or Garage, Cottage, Complete With Hardware.

Choice of Blue, White or Yellow

**Black & Decker**

**24.88**

**7 1/4" CIRCULAR SAW** **24.88**

**PERMANENT Wipe Clean WALL PANELS**

All patterns and colors available. Virtually maintenance free, stays forever beautiful.

4x8 sheets Reg. \$9.98 **\$8.88** C & C

Moulding that simplifies the job, now **\$1.27** Ea.

**SPECIAL of the Week**

**TABLE TENNIS TOPS**

1/2" Thick **\$5.97** pr. 3/4" Thick **\$8.47** pr.

Particle Board tops finished green both sides - 48" x 24" each piece. Also ideal for hobby board, train board, family gathering or banquet tables.

**UTILITY FOLDING LEG KITS**

Makes 2 complete tables of a table tennis table. Model 202 contains 8 chrome plated legs, 8 table rails, screws, nails, etc.

Ideal for Homes, Schools, Clubs, Banquets, C & C **\$14.97** Per Set.

**REAL WOOD PANELING**

By Selection - Genuine

**VINYL PANELING ON MAHOGANY**

4' x 7' Now **\$4.97** 4' x 8' Now **\$5.97**

Colony Pecan Winter Elm English Chestnut Country Birch Arched Hickory Delaware Walnut Colonial Pecan Golden Walnut Wormy Chestnut Kilmerjane Teak

**GOOSEBUMPLE REMOVER**

**ZONOLITE ATTIC INSULATION**

helps make your whole house warm and cozy. Pour it right over the old fashioned, thin stuff insulation in your attic, level it even with the joists and leave it.

**\$1.39**

3 cu. ft. bag C & C

**REAL WOOD PANELING**

ALL THE BEAUTY AND ELEGANCE OF REAL WOOD AT BUDGET PRICES

CASH & CARRY

- WASHINGTON CHERRY 9.97
- GEORGIAN PECAN 9.97
- OLD RUSTIC HICKORY 11.97
- RUSTIC AMERICAN WALNUT 9.97
- EXECUTIVE ROSEWOOD 11.97
- ORIENTAL
- ANTIQUE ASH 6.95
- ANTIQUE
- RUSTIC BIRCH 6.95

Above 2 are only ones 16" Thick

**REAL WOOD PANELING**

- HONEY BIRCH 6.95
- PATIO BIRCH 6.95
- AQUAMARINE BIRCH 6.95
- VINTAGE DISTRESSED BIRCH 6.95
- WALNUTONE BIRCH 6.95
- KNOTTY CEDAR 7.97
- PECKY TRUGA BARK GRAY 7.27
- PECKY TRUGA 7.27
- GOLDEN VINTAGE OAK 8.87

Cash & Carry

**COLOR PANELS**

SIZE 4x8x1/4"

Your Choice 4 colors **\$7.97** ea.

- Golden Lime, Luscious as the Fruit.
- Blue Bonnet, Blue as Blue Sky.
- Buttercup Yellow, like the Texas Wildflower.
- Flame Red, Will warm your Heart.

Cash & Carry

**PLASTER SPINDLES BALUSTER POLES**

8-SQ. FT. **\$1.97** Package

12"x24"x1/2" Thick

Decorates or insulates

Sound proofs

E.Z. to Apply

Cash & Carry

**77c**

Largest Selection in Town

Cash & Carry

**QUALIFIED LUMBER SALESMEN TO SERVE YOU - Charge it on BANKAMERICARD or MASTER CHARGE**

**PINE LUMBER CASHWAY**