

## Leib enters race for prosecutor

Standing in the Oakland County courthouse lobby outside the prosecutor's office, Jeffrey M. Leib formally announced he will seek the nomination to succeed L. Brooks Patterson in the Aug. 2 Republican primary.

"The office of prosecuting attorney must be earned, not inherited," said Leib, 46, of West Bloomfield. It was a reference to Richard Thompson, chief deputy prosecutor for 16 years whom Patterson has endorsed. "While some politicians believe that the answer to solving crime is to simply pass more laws, I believe there is no substitute for fast, firm and tough prosecution," Leib said.

Leib was an assistant prosecutor in 1969-70 and for the past 18 years has been in private practice in Southfield.

His entry assures at least a three-way Republican primary between himself, Thompson and John J. McDonald, a county commissioner from Farmington. No Democratic candidate has announced yet.

Most recently a West Bloomfield Township trustee, Leib quit the post last week in the face of a recall effort by groups calling the board too pro-development. Leib also had been a member of the planning commission, wetland review board and cable advisory board.

In 1978 he was a co-chairman of Taxpayers United for Tax Limita-



Jeffrey M. Leib

tion, the group headed by Richard Headlee, and he has Headlee's endorsement.

Leib has a bachelor of arts degree from Michigan State University and juris doctor from the University of Detroit School of Law.

Leib has been a legal adviser to the Oakland probate judges (1970-71), probate court referee (periodic since '71), circuit court mediator (periodic since '78), and attorney for the city of Orchard Lake Village (1974-76).

In 1978 he was a co-chairman of Taxpayers United for Tax Limita-

called the 15th annual Michigan performing arts talent show. It gives people with handicaps an opportunity to display their talents and promotes public awareness of their capabilities, according to ARC executive director Agnes I. Wisner.

## House trims 'Star Wars'

Here's how area House members were recorded on major roll-call votes in the week ending May 6. The Senate was out of session.

### HOUSE

**'STAR WARS' CUT** — By a vote of 223 for and 195 against, the House cut spending on the Reagan Administration's Strategic Defense Initiative to \$3.5 billion next fiscal year.

The figure is \$600 million under the House Armed Services Committee recommendation and \$1.5 billion below President Reagan's request for the proposed "Star Wars" anti-missile shield.

The vote occurred during debate on the nearly \$300 billion defense authorization bill for fiscal 1989. The bill (HR 4326) remained in debate.

Supporter Les AuCoin, D-Wis., said the money cut from SDI could be better spent on military drug interdiction efforts.

Opponent James Courter, R-N.J., said the amendment "cuts \$600 million from basic research necessary to achieve the idea of America defending itself."

Members voting yes favored deep cuts in SDI funding. Voting yes were: Carl Pursell, R-Plymouth, Dennis Hertel, D-Harper Woods, William Ford, D-Taylor, and Sander Levin, D-Southfield.

Voting no: William Broomfield, R-Birmingham.

**INVASION BAN** — The House voted, 276 for and 92 against, to ban U.S. combat troops from Nicaragua except in extreme circumstances. Among exceptions are a declaration of war and provocations such as Nicaragua's acceptance of Soviet nuclear weaponry.

This amendment was attached to the fiscal 1989 defense authorization bill (above).

Sponsor Thomas Foley, D-Wash., said the United States should pose

### Roll Call Report

"no active threat of intervention in Nicaragua" that could upset Central American peace talks.

Opponent Henry Hyde, R-Ill., said "Nicaragua by this statute is the only country in the world to enjoy congressional immunity" against an American invasion.

Members voting yes supported the qualified ban on American troops entering Nicaragua. Voting yes were Hertel, Ford, Levin and Broomfield. Not voting was Pursell.

**TROOPS ACTIVITY** — By a vote of 147 for and 238 against, the House rejected a 1989 defense bill amendment to further restrict American troop activity near Nicaragua. This followed a vote (above) to limit chances of America invading the Marxist country.

Under present law U.S. forces cannot go within 20 miles of the Nicaraguan border except during training. The amendment sought to also prevent joint training maneuvers with Honduras or Costa Rica from taking place within 20 miles of Nicaragua.

Sponsor Edward Markey, D-Mass., said the amendment ensures "that American boys are not unnecessarily

put in danger."

Opponent Sonny Montgomery, D-Miss., said "the big problem with this amendment is it is unenforceable."

Members voting yes supported the amendment. Voting yes were Demo-

crats Hertel, Ford and Levin. Voting no: Republicans Pursell and Broomfield.

**MX VS. MIDGETMAN** — The House voted 233 for and 171 against to increase spending for the Midgetman missile to the detriment of the MX missile.

Members voting yes wanted to spend more on the Midgetman and less on the MX. Voting yes were Pursell, Hertel, Ford and Levin. Voting no was Broomfield.

## Elderly legal funds distributed

The Area Agency on Aging 1-B (AAA 1-B), serving older adults in Oakland and five other counties, has awarded funding for older adult legal assistance here.

Sandra Reminga, executive director of AAA 1-B, said older adults have more legal difficulties than the general public with entitlement programs such as Medicare, pension disputes, insurance problems, probate proceedings, guardianship and conservatorships.

Legal assistance services include education, representation and coun-

sel. There is no charge for the services, she said, but a donation is requested.

Receiving a total of \$87,810 are: Oakland Livingston Legal Aid, legal services; Catholic Social Services (Sheltering Arms), adult day care; Jewish Vocational Service, adult day care; CareGivers, homemaker services; Jewish Family Service, homemaker services; Oakland Livingston Human Service Agency, Oakland Mobile Meals; Emerald Kitchens; Waterford Senior Citizens; City of Farmington Hills; and Older Persons Commission, home delivered meals.

## ARC holds talent show

A talent show for people with mental retardation begins at 8:30 p.m. Saturday, in Varner Recital Hall on the Oakland University campus near Rochester.

Sponsor is the Association for Retarded Citizens of Oakland County, a United Fund Agency. The event is

called the 15th annual Michigan performing arts talent show.

It gives people with handicaps an opportunity to display their talents and promotes public awareness of their capabilities, according to ARC executive director Agnes I. Wisner.

## Exclusive Showing

Friday and Saturday, May 20 & 21



Pierson Interiors is proud to present Mr. Carl E. Krentz, internationally recognized importer of fine art, as he presents an exclusive 2 day showing and sale of original Oils and Watercolors.

Mr. Krentz has put together a collection of masterfully created original works from around the world for this exclusive Pierson showing.

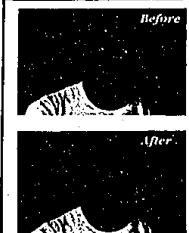
He will be available from 11 am-7 pm Friday and 9:30 am to 12 noon Saturday, to help you select the perfect Original for your decor.

Prices from \$450 to \$10,000.

**Pierson Interiors**  
home furnishings

4110 Telegraph Rd., Unit S, of Long Lakes, Bloomfield Hills, 48307  
Mon., Thurs. & Fri. 10:00 a.m. to 5:00 p.m., Sat. & Sun. 11:00 a.m. to 5:00 p.m.

## Stash your trash.



You won't notice any difference, but your country will. The five minutes you spend registering with Selective Service at the post office won't change you. But it will make a difference to your country. So when you turn 18, register with Selective Service. It's quick. It's easy. And it's the law.

A public service message of this publication and Selective Service System.

**"drapery boutique"**

**48% OFF WALLPAPER** 48% off 100 selected Special Order Books. 40% off all other Special Order Books in our library. Coupons must be presented at time of order only. No charges accepted. Min. \$50 at sale price, otherwise discount is 35%. Freight and handling added. 1400 Book Library. Expires Sat. May 28, 1988.

**78% OFF!**

**CUSTOM VERTICAL BLINDS**

| DISCOUNT              | 78% OFF | 75% OFF | 75% OFF | 77% OFF |
|-----------------------|---------|---------|---------|---------|
| PATTERN               | 168.00  | 188.75  | 103.40  | 176.59  |
| Weight & Height       | 168.00  | 188.75  | 103.40  | 176.59  |
| 74" x 84"             | 168.00  | 188.75  | 103.40  | 176.59  |
| 109" x 84"            | 168.00  | 188.75  | 103.40  | 176.59  |
| 118" x 84"            | 168.00  | 188.75  | 103.40  | 176.59  |
| 84" x 84" (1/2" draw) | 168.00  | 188.75  | 103.40  | 176.59  |
| 84" x 84" (1/2" draw) | 168.00  | 188.75  | 103.40  | 176.59  |

**custom draperies**

**UP TO 40-60% OFF**

**ON IN STOCK FABRICS**

**NO HANDLING CHARGES**

**Since 1969**

**GRAND RIVER & HAGGERTY**  
38252 Grand River, Farm. Hills  
(313) 478-3133

**ORCHARD & 14 MILE CENTER**  
30858 Orchard Lake Rd., Farm. Hills  
(313) 428-4311

**SO. LAKE RD. & ROCHESTER RD.**  
6048 Rochester Rd., Troy  
(313) 877-3210

**STORE HOURS**  
Mon. - Thurs. 9:30 a.m. - 5:30 p.m.  
Daily 9:30 a.m. - 5:30 p.m.

*Claymore*

She's a good sport...

Ralph Lauren Sweatshirt, '87  
Striped 100% cotton jeans, '62.50  
Cole Hann Shoes, '35

**LIONESS**  
**THE CLAYMORE**

Seven Twenty Two North Woodward Avenue  
Birmingham, Michigan • 642-7755  
Mon. Tues. Wed. Sat. 10:00 a.m. to 6:00 p.m.  
Thurs. & Fri. 10:00 a.m. to 9:00 p.m.

**INTERMATIC®**  
**MALIBU®**

**DIMENSION II BY INTERMATIC - THE ULTIMATE DIMENSION IN LOW VOLTAGE OUTDOOR LIGHTING. ATTRACTIVE SCULPTURED SHADE CHANGES A CONVENTIONAL PRISMATIC TIER LIGHT INTO A UNIQUE AND ELEGANT LAMP THAT MAKES ANY HOUSE AND GARDEN STUNNING. UNEQUALLED FOR ILLUMINATING FLOWER BEDS, PATIO BORDERS OR WALKWAYS, IT IS A WELCOME ADDITION TO ANY HOME'S OUTDOOR DECOR.**

**SET INCLUDES 4 TIER LIGHT FIXTURES, 50 FT. OF LOW VOLTAGE CABLE, WEATHER-PROOF PLUG-IN POWER PACK WITH TIMER. (TIMER HAS "ON/OFF" FEATURE.)**

**BROSE STOCKS ALL ACCESSORIES FOR YOUR OUTDOOR LIGHTING NEEDS. TRY US.**

**DIMENSION II AND OTHER INTERMATIC MALIBU TIER LIGHT SETS ARE ON SALE FOR 10 DAYS.**

**PRICES START AT \$67**

**SALE LAST 10 DAYS ONLY!**

**BROSE ELECTRICAL CONSTRUCTION, INC.**

37400 W. 7 MILE ROAD  
LYONNA, MI 48152 • (313) 484-2211

Lighting Fixtures for Every Decor • Wiring Supplies and Light Bulbs

MON. TUE. WED. SAT. 10:00 a.m. to 6:00 p.m.  
THURS. FRI. 9:30 a.m. to 6:00 p.m.