

# Do Zodiac Signs Determine Politics?

## Yes, Our Study Of 200 Congressmen Shows

By TIM RICHARD

There's a bit of doggerel, from a Gilbert and Sullivan opera perhaps, which maintains that "Every little child born into this world alive/ Is either a little liberal or a little conservative."

The underlying notion is that one's politics is determined, not by listening to debates and making conscious choices, but by forces beyond his control — forces that began operating when he was an infant.

It so happens that the body of folk knowledge called astrology makes similar claims: That one's character, his job skills and his built-in problems are determined at birth; and that people can be roughly classified by the 12 signs of the zodiac.

Putting the two foregoing ideas together, one can conclude that a person's political makeup is determined by his birth sign. A person born under one sign could, if elected to office, be expected to vote in a "liberal" manner, another person under a different sign to vote "conservative."

**DOES IT WORK? YES,** in the mass. A team of Observer Newspapers staff members found that U.S. representatives tended to have liberal records if born under the signs of Leo, Gemini, Sagittarius and Aquarius. Conservative records were made by congressmen born under the signs of Capricorn, Cancer, Scorpio, Virgo and Taurus. Three signs, Pisces, Aries and Libra, were in the middle of the road and difficult to classify.

This doesn't mean there's "something to" astrology. Astrology's basic theories are nonsense. When Copernicus, 500 years ago discovered that the sun and not the earth is the center of our solar system, he demolished any theoretical underpinnings astrology may have had.

Moreover, astrology holds that an invisible stamp is put on a human being at his moment of birth. But life actually begins nine months before birth, and the events and nutrition of early childhood have profound influences, too.

Yet if astrology's theories are rubbish, its predictions are not. Astrology is like the herbs that the medicine man picked up on the hillside. For reasons unknown, the things work. They don't work perfectly, but the results still can't be attributed to mere chance.



SEN. ROBERT GRIF-FIN (Nov. 6) is Scorpio, the most complex and baffling of the signs but clearly a conservative. A supporter of the Nixon Administration most of the time, Griffin scores a 52, moderately-conservative.



SEN. PHILIP HART (Dec. 10) is Sagittarius, which figures to be compatible with a liberal. With a zero rating on the conservative index, Hart ranks as the most liberal member of the Senate.

**IN THE OBSERVER** Newspapers study, one part of the team looked up the birthdates of 200 members of the 91st Congress from signs selected at random; then looked up their zodiac birth signs and their ACA ratings.

ACA stands for Americans for Constitutional Action, a non-partisan political action and research group of a distinctly conservative nature. Using key roll call votes, ACA assigns congressmen ratings from zero to 100, depending on how closely they hewed to the ACA line. Other groups rate the Congress, but ACA's methodology struck the Observer staffers as best. A voter who is liberal would prefer low scores; a conservative, high scores.

If politics and birth signs are unrelated, it would follow that the ratings of every sign would average out to about 50. In fact, however, Leos had a low mean of 33.57 and Taurans a high of 58.8. The spread was even more startling when medians were used — Gemini was low with 17, Taurus high with 75.

(The "mean" is the figure you get when you add up all the scores and divide by the number of congressmen. The "medi-

an" is the point at which half the congressmen have higher ratings, half lower.)

There was quite a spread within each birth sign. Every group but Scorpio had at least one member with a score of 5 or below; every group also had at least one member who scored 85 or higher. That was the work of one part of the team.

**THE OTHER PART** of the team consulted a new book called "Astroanalysis" by Ilya Chamberlin (Lancer Books, New York, 1970). Chamberlin is a believer in the ideas of Carl Gustav Jung, the Swiss psychologist who was first friend, then foe, of Sigmund Freud.

Chamberlin, who dedicates his book to Jung and quotes him in every chapter, does a layman's psychoanalysis of every zodiac sign — personality description, hangups, job strengths and weaknesses, and sexual behavior patterns. Nowhere, however, does he discuss political preferences.

And so this part of the team, with 18 years of experience in studying and covering political campaigns, picked out the psychological words with political significance in each of Chamberlin's analyses, and from these made a political description of each birth sign.

Each part of the team kept its data secret from the other part to assure objectivity. When they were done, they compared notes, and — behold! The numerical results from the ACA ratings were astonishingly close to what could have been predicted from Chamberlin's "Astroanalysis."

**WHY WEREN'T** the correlations perfect? Why weren't the 12 spreads of scores tighter within each group? There are several reasons:

• Chamberlin himself is not a political analyst.

• Congressional records don't tell the full story of a congressman's philosophy — they tell only how he voted on the bills that came to the floor, not the bills he would have liked to have voted on. Furthermore, the record tells only floor roll call votes, not voice votes or committee votes. So the record is incomplete.

• Astrology is scientific rubbish. A more refined way of analyzing birth dates might give better results.



REP. JACK McDONALD (June '28) is Broomfield (April '28) Cancer, a slightly conservative sign. His 67 rating the most conservative sign on the ACA index appears politically. Broomfield's to match almost perfectly lifetime 64 rating marks what one could predict by him as only moderately studying his stars. conservative.

## How Signs Rate Politically In Book, Votes

### Liberals

**LEO**, July 24-Aug. 23. Chamberlin: "Authority. Generosity — even magnanimity. (Can be) extravagant, prodigal. Blustery. A liberal measure of dignity. Gifts for leadership."

Our analysis: Liberal, though not politically minded.

ACA rating: Mean score 33.57, most liberal of all.

**GEMINI**, May 22-June 21. Chamberlin: "Dual, conflicting natures. Dazzling, inconsistent, irrational and depressing. (Can be) schizophrenic. Born to succeed."

Our analysis: Apolitical, leaning liberal.

ACA rating: Mean score 34.31, very liberal.

**SAGITTARIUS**, Nov. 23-Dec. 21. Chamberlin: "Free-roaming. Intuitive. Impulsive. Benevolent. Compassionate. Receptive to new ideas. Extroverted. Highly social. Open-minded."

Our analysis: Very liberal.

ACA rating: Mean score 36.05, very liberal.

**AQUARIUS**, Jan. 21-Feb. 19. Chamberlin: "Humanists. Well ahead of their times. Inventive. Intuitive. Generous. (Bad cases): Intolerant in their own 'liberal' way."

Our analysis: Strong liberal.

ACA rating: Mean score 43.05, liberal.

### Moderates

**PISCES**, Feb. 20-March 20. Chamberlin: "Markedly emotional. Intuition. Compassion. Extremely broad-minded, tolerant. (Bad cases): Indecisive, hysteric, treacherous."

Our analysis: Undecided, not doctrinaire.

ACA rating: Mean score 43.17, moderate.

**ARIES**, March 21-April 20. Chamberlin: "Generous. Protective and supportive toward those they believe unfairly treated. A tendency to scorn even the rudimentary principles of thrift."

Our analysis: Very liberal.

ACA rating: Mean score 43.47, moderate.

**LIBRA**, Sept. 24-Oct. 23. Chamberlin: "Conciliators and mediators. Middle-road. Compromisers. Diplomatic. Sees both sides. Insatiable appetite for flattery. (Can be) permissive."

Our analysis: Moderate, electable but not strongly political-minded.

ACA rating: Mean score 46.76, barely right of center.

### Conservatives

**CAPRICORN**, Dec. 22-Jan. 20. Chamberlin: "Tenacious. Ambitious, grave, hard-working, determined. Conservatism in all things. Practical. Not noted for generosity. Thrifty. Reserved."

Our analysis: Conservative in manner, tending to conservatism in politics.

ACA rating: Mean score 46.9, slightly conservative.

**CANCER**, June 22-July 23. Chamberlin: "Sensitive. Reserved. Greediest, most closed-in and shrewd. Thrift, conservatism. Prefer older, more traditional things. Self-sacrificing."

Our analysis: Conservative.

ACA rating: Mean score 50.38, conservative.

**SCORPIO**, Oct. 24-Nov. 22. Chamberlin: "Most complex and baffling. Lack of spontaneous generosity. Sense of thrift. Power, intensity, pride. Deeply philosophical. Humanitarian traits."

Our analysis: Inconclusive politically; does well married to conservatives, perhaps conservative.

ACA rating: Mean score 54.09, conservative.

**VIRGO**, Aug. 24-Sept. 23. Chamberlin: "Conservative and cautious. Painstaking, methodical. Reserved. Orderly. Superb administrators. Not pioneers and trailblazers. Industrious. Stable."

Our analysis: Pragmatic conservative.

ACA rating: Mean score 56.97, conservative.

**TAURUS**, April 21-May 21. Chamberlin: "Stolidity, tenacity. Conservative. Careful — even meticulous. Cling to tried and traditional methods. Complete order. Loves possessions."

Our rating: Very conservative.

ACA rating: Mean score 58.8, median 75, very conservative.

## The new 1971 Cadillacs are being built again!

### Cadillac 1971... the new look of leadership.

We're again building all nine magnificent models of the totally new 1971 Cadillac. When you discover how new and luxurious they are, you'll know why they're the most outstanding motor cars ever built.

They're new in looks, with classic body contours and greater glass area.

Their new luxury includes a newly designed instrument panel

and new lower profile seats. And the new Cadillac

performance—so smooth and quiet—must be

experienced to be appreciated. Before

long, you'll be able to enjoy owning

one of these distinctive motor cars

that so impressively reaffirm

Cadillac's leadership.

Why not order

yours now, at

your authorized

dealer's for earliest

possible delivery.



### Eldorado 1971... the world's most elegant personal cars.

There's nothing in the motoring world that even competes with the two completely new Fleetwood Eldorados for 1971. Their front-wheel drive and exclusive 8.2 litre V-8 engine immediately distinguish them from all other fine cars. New coach windows

are an exclusive feature of the Eldorado

Coupe. The youthful Eldorado

Convertible, now the only luxury

convertible built in America,

comes equipped with a

new inward-folding

Hiwayway Top.

Without a doubt, the

two Fleetwood Eldorados

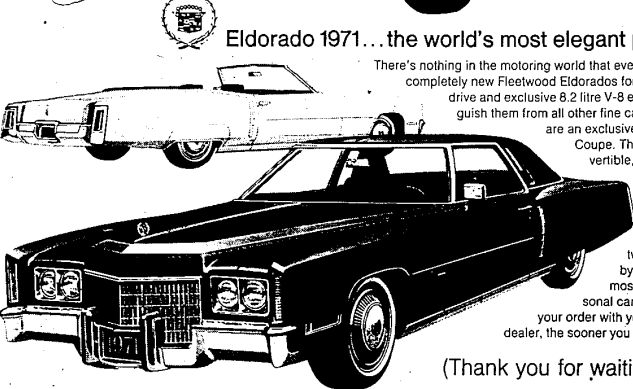
by Cadillac are the world's

most excitingly luxurious

personal cars. The sooner you place

your order with your authorized

dealer, the sooner you can enjoy one.



(Thank you for waiting.)



Cadillac Motor Car Division



REP. WILLIAM D. FORD (Aug. 6) is Leo, the most liberal category politically. Ford gets consistently low scores from conservative groups and ranks as one of the most liberal members of the U.S. House.



REP. MARVIN ESCH (Aug. 4) is Leo, which is politically the most liberal sign. With a 43 lifetime record on the index, Esch ranks as the second-most liberal Republican from Michigan.