

# 18 homes: a study in one-upmanship



LARRY ALLEN PEPLIN

One of the hottest trends in interior design is the Southwestern look. In the Garlinghouse, by Burley Associates of Canton, Decorating Den's Mary Bahar chose five-legged wooden chairs with leather-wrapped corners and a casual stain. The furnishings are in a sunroom adjacent to the living room and breakfast nook. French doors lead out to a deck.

**O**N A HILLSIDE of blue-chip land in the prime Orchard Lake Road corridor just north of Walnut Lake Road in West Bloomfield, from Aug. 4 through Aug. 26, the Builders Association of Southeastern Michigan is presenting 18 new houses that are a study in one-upmanship called "HOMEARAMA — Summer."

In the embryo Autumn Ridge Subdivision and priced \$250,000-\$525,000, the houses will show the public many things they have never seen before, in the builders' battle to get "one up" on competitors. For instance:

- A fireplace in the master bedroom suite has been the ideal. Now, Northbrook Associates of Rochester Hills has brought in a "see-through" fireplace for their "Tri-Star" model, so that one can also enjoy the flames from the relaxed perspective of the whirlpool tub in the master bath. Champagne, anyone?

- Separate master bedroom suites have been the rage for the last few years. Now, a number of HOMEARAMA models have "step-up" master bedroom suites. Four full steps are required to ascend to that suite in "The Elite" model by Grand Homes Inc. of West Bloomfield, raising it well above the level of mediocrity . . . and the children.

- Second-floor decks are found on quite a few HOMEARAMA houses, but Dakota Building Co. of West Bloomfield has put a 6-foot wall around half of the one on "The

Sheffield" so that sun bathing "au naturel" is possible.

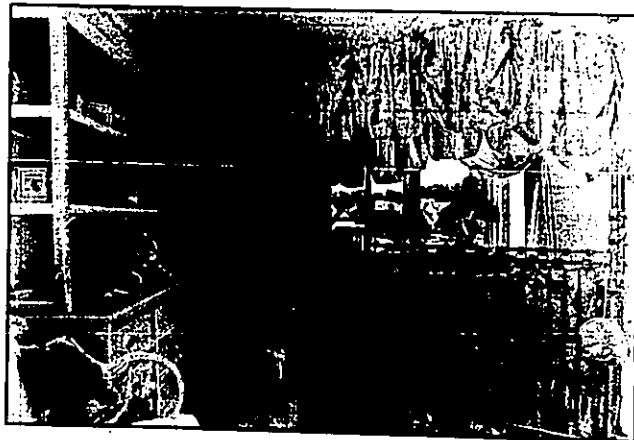
- Guest rooms are great, but "The Sheffield" model goes one-up with an entire guest suite, featuring a molded acrylic tub and shower with molded-in seat and clear "bubble" door.

- Large walk-in closets have been in vogue, but "The Elite" carries the idea to great lengths; 17 feet to be exact, and large, separate "his" and "hers" closets can be found in the master bedroom suites of several models like "The Avalon" by West End Construction Co. of Fenton, and "The Grove" by Nosan/Cohen Associates Inc. of West Bloomfield.

- Many moms and dads have luxurious whirlpool tubs in their master baths, but Center Building Co./Kalabal Construction Inc., of Farmington Hills and Southfield goes one-up by putting one in for the kids, too, in "The American Living" model.

- Space and openness have been the trend in interiors, and it is stressed in many HOMEARAMA houses, but possibly carried to the maximum and most impressive in "The Grove." The visitor walking through the double entrance doors is greeted by a tremendous breadth of open interior living space 45 feet wide, incorporating the great room, dining room and library.

- Grand and soaring foyers have been popular, and many examples are found at HOMEARAMA, but "The Avalon" one-ups with a foyer that gathers spaciousness from the barrel-vaulted great room and vaults upward to a skylight three full stories above.



LARRY ALLEN PEPLIN

In one of the few baby rooms in Homearama-Summer in West Bloomfield, decorator Mary Bahar featured pastels and ribbons in a fanciful setting that includes wicker furnishings and a wrought iron crib and some very plush pads to keep baby company. It's a darling room in the Garlinghouse.

**MAIN'S**  
PEBBLE PLACE SINCE 1937

**EVERYTHING IN LAWN AND GARDEN SUPPLIES**

PICK-UP & DELIVERY AVAILABLE

FLOWERS • ROSES • BULBS • SEED • FERTILIZER  
TREES • SHRUBS • POTTERY • STONE • FOUNTAINS  
STATUARY • R.R. TIES • SAND AND GRAVEL  
U-CART CONCRETE • DECKS & GAZEBOS

WHOLESALE & RETAIL SALES

21255 Telegraph Southfield  
Between R & Q Mile  
**444-1060**

&

4689 South Old U.S. 23  
Brighton  
at Spencer Road  
**227-7774**

**STISON LAKE (MILFORD AREA)**

**TWO GREAT LOCATIONS!**

You'll find no better combinations: Picturesque sites and quality-crafted homes built to your specifications. Fine community amenities and pleasant area surroundings. Custom construction at affordable prices. Sneak a peek now and reserve your new home at preview prices. Sales office located at West Bloomfield Ridge.

**LONG LAKE BUILDING CO.**  
**471-5988**

**WEST BLOOMFIELD RIDGE**

In West Bloomfield, south off Commerce Road, 1 1/2 miles east of Union Lake Road. Nicely wooded sites in a prestigious location. 1 1/2 and 2-story homes priced from the

**MID \$140's**

**MID \$170's**