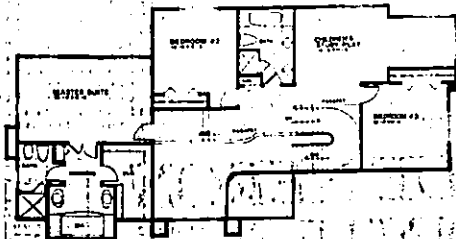
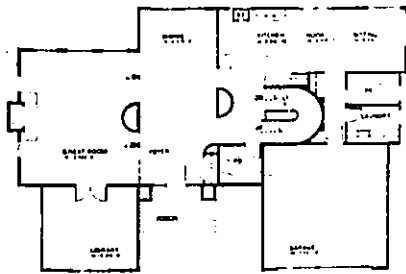




The Biscayne

The three-bedroom Biscayne is contemporary with traditional lines and uses an unusual, dramatic exterior finish called "Dryvit." Other features of the model include a spacious foyer with elegant marble flooring and 19-foot ceiling; kitchen with island and nine-foot ceiling, connects to bright sitting area with large windows; master bedroom suite emphasizes privacy, located three steps above second floor away from other bedrooms. The master bath has vaulted ceiling, marble floor, has triangle windows following the ceiling line, sunken whirlpool, all marble shower, with full body spray. A floating stairway curves to bridge and has open risers. The dining room features extensive doorwall overlooking a courtyard. The library has pickled oak flooring, double French doors and dramatic windows. The great room steps down from the foyer and dining room, and overlooks aggregate concrete private courtyard. Priced at \$400,000-\$440,000. Interior design by Ray Interiors.



LEE'S LANDSCAPE AND DESIGNS

"Artists of the Outdoors"

FREE ESTIMATES • AFFORDABLE PRICES

Call for Appointment 968-5313

- ALL PLANT MATERIALS
- ROCK, BOULDER BARK AND NATURAL GROUND COVERS
- SMALL TREE & SHRUB REMOVAL
- RE-LANDSCAPE & RE-SOD

Committed to full landscape design and implementation



"Discover The Excellence"

RESIDENTIAL • COMMERCIAL • REPLACEMENT

Distributed And Serviced By:

EAGLE OF MICHIGAN

— SEE US AT THE —
HOMARAMA TENT

800-792-0361

SUBSIDIARY OF MASCO INDUSTRIES

THE FINAL COLLECTION WAS A GREAT SUCCESS



More Prestigious. More Dynamic. More Luxurious. Just a few words that describe the newly redesigned floor plans of our condominium models in the final phase at Walnut Hills. Take a look at what we've done to improve, and we think you'll see why we are the finest designer label in West Bloomfield.

BRAND NEW FEATURES:

- ◆ Soaring ceilings in many areas
- ◆ Open, spacious entertainment area
- ◆ Increased living space
- ◆ Walk-out lower levels to tree setting
- ◆ Private outdoor decks
- ◆ Redesigned luxury bathrooms
- ◆ Skylights in the great room and bathroom
- ◆ Larger walk-in closets

Priced from \$137,890

Just South of Walnut Lake Road • 1 block West of Drake Road in West Bloomfield

Broker Participation Welcome

Developed by
HJ Harbert Lowson, Inc.

Phone: 661-0338 • 557-2080

Open daily 12-6, Closed Thursdays