

BLOOMFIELD BOARD OF REALTORS MULTI-LIST SERVICE • THE METRO MULTI-LIST SERVICE • THE SOUTH OAKLAND COUNTY BOARD OF REALTORS MULTI-LIST • THE ROCHESTER BOARD



FARMINGTON HILLS DELIGHT
3500 sq. ft. Colonial with a contemporary flair offering ceramic entry, living, dining and family rooms, 4 spacious bedrooms, "Garden" room and island kitchen with garden window over sink. \$262,000. FOX-33626



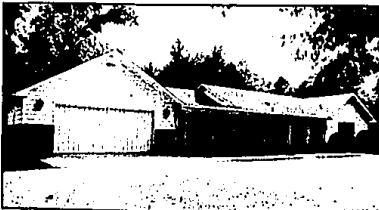
WEST BLOOMFIELD LAKE ESTATES
Classic brick Colonial has it all - gracious foyer, elegant dining room, gourmet kitchen, formal living and family room, 4 spacious bedrooms, finished basement, hardwood floors, Intercom and security system. WAT-33359



WONDERFUL FAMILY HOME
Over 3100 sq. ft. of plush neutral decor featuring 4 bedrooms, huge family room with wet bar, separate den, spacious kitchen with lovely open breakfast room. Reduced to \$257,000. DER-30111



AUTUMN RIDGE SHOWCASE
Stately Colonial built as a Homearama Model with truly traditional elegance and modern amenities. Mature preserve pond setting for this walk-out lower level. Corner lot! \$325,000. AUN-33267



BEAUTIFULLY MAINTAINED
Super ranch home in an elegant West Bloomfield setting of magnificent trees offering 6 to 8 acres with 2 or more buildable lots. This comfortable home offers 3 bedrooms, 3 baths, finished basement and more. \$425,000 TEN-20434



55 ACRE FARM
Charming Cape Cod home with excellent quality throughout. Hardwood floors, 4 bedrooms, 3 baths and huge deck. Three large new barns, fencing, underground sprinklers and kennels. \$400,000. Also adjacent 58 Acre Farm at \$250,000. 87-HOG



RALPH MANUEL

ASSOCIATES • REALTORS

<p>647-7100 1821 W. Maple Birmingham - Bloomfield</p> <p>656-8900 445 S. Livernols Rochester Hills - Sterling Heights</p>	<p>851-6900 32961 Middlebelt Farmington Hills - West Bloomfield</p> <p>647-5500 900 S. Adams Birmingham - Troy</p>
---	--

Relocation 1-800-R-MANUEL

- MEMBER OF EMPLOYEE RELOCATION COUNCIL •
- MEMBER OF ASSOCIATES RELOCATION SERVICE •

IF YOU ARE MOVING ACROSS THE CITY OR ACROSS THE COUNTRY, OUR RELOCATION DEPARTMENT CAN MAKE YOUR MOVE SMOOTHER.







VACATION AT HOME
Relax in your own private free-form pool with waterfall and jacuzzi! Sip wine from your private stock from the temperature controlled 800 bottle wine cellar. The open floor plan and soaring ceilings will delight you! \$589,000 AST-33637



PRIVATE PARADISE
Extraordinary Tudor nestled amongst the woods featuring marble foyer, dramatic stairway, 5 bedrooms, 3 1/2 baths, gorgeous family room with doorwalls to wrap-around deck and walk-out lower level! \$319,000. TRE-33522



BIRMINGHAM FARMS
Excellent family home with over 3000 sq. ft. features marble foyer, opening to a Great floor plan. Library has parquet floor and built-ins, fireplaced family room and 1st floor laundry. \$179,900. CAL-33649

VISIT HOMEARAMA

August 4th - August 28th

SAVE \$100

SPECIAL DISCOUNT COUPON

HOMEARAMA

HOUSING IDEAS FOR THE 80's AND BEYOND

REG. ADMISSION \$4.00 \$3.00

PAY ONLY \$3.00

WITH THIS COUPON

SAVE \$100

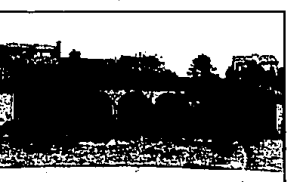
Courtesy of Ralph Manuel Associates



TRANQUILITY AND PRIVACY
Are yours in this custom all brick 3150 sq. ft. Georgian Colonial. Dramatic foyer with circular staircase, 4 bedrooms, 2 1/2 baths, 4 fireplaces and located on a private road. \$235,000. WES-04



OPEN SUNDAY 1-6
(closed Thursday)
ORCHARD PLACE CONDOS
Fabulous contemporary units in a Gatehouse community. Choose 1, 2 or 3 bedroom units offering balcony, elevator from parking and some have fireplaces. From \$77,900. E. of Orchard Lake and S. of 14 Mile.



LAKEFRONT CONDO
Ranch condo offering 2 bedrooms, 2 baths, library and more - a rare Gem! Located in popular "Cloister on the Lakes" with basement, 1st floor laundry, Bloomfield Schools and more! \$219,000. RHE-33509



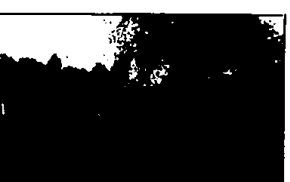
MANITO LAKEFRONT
Near Inlandwood Golf Course. Stunning contemporary Condo offers living room with marble front fireplace and gorgeous view of lake. Many more amenities. Call today. \$215,000. LAK-96



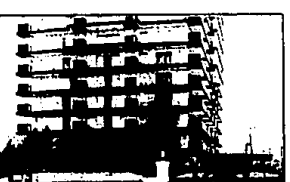
SPECTACULAR LAKE FRONTAGE
Situated on a quiet cul-de-sac. Ceramic foyer entry with circular staircase, cathedral ceiling in the family room with marble fireplace, central air, sprinkler system and walk-out basement. WET-32496



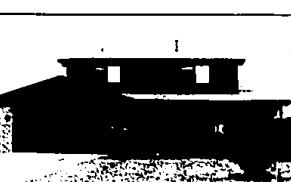
CAREFREE LIVING
In this convenient Southfield Condominium. Well maintained ranch unit with a private entrance. Neutral carpeting, carpet and appliances included. \$58,000. VIE-27785



PINE LAKE PRIVILEGES
Four bedroom Ranch with Bloomfield Hills schools offers a contemporary flair. Great room with cathedral ceiling and fireplace. 2 car garage and a large lot. Offered at \$159,900. PIE-33621



LUXURY CONDO
Contemporary Condo in mint condition offers elegant living with a neutral decor, track and recessed lighting, all white kitchen and balcony off each outside room. \$78,500. PRE-27904



WEST BLOOMFIELD
Charming Colonial well designed for private family living and great entertaining. Features warm neutral tones, 4 bedrooms, 2 1/2 baths, kitchen with doorwall to patio and private views. \$154,900. ANE-33723

THE MICHIGAN MULTIPLE LISTING SERVICE • OUR FIRM IS A MEMBER OF • THE BIRMINGHAM/ALCOOM • BOARD OF REALTORS MULTI-LIST

OF REALTORS MULTI-LIST SERVICE • THE MACOMB COUNTY BOARD OF REALTORS MULTI-LIST SERVICE • THE NORTH OAKLAND BOARD OF REALTORS MULTI-LIST • THE MICHIGAN MULTIPLE LISTING SERVICE • OUR FIRM IS A MEMBER OF • THE BIRMINGHAM/ALCOOM • BOARD OF REALTORS MULTI-LIST